



LAND FOR SALE

Doniphan Dr ±3.57 AC

C-3 ZONED SITE NEAR ARTCRAFT RD, LOOP 375 AND I-10 ACCESS

EL PASO, TX 79932

CALL FOR ASKING PRICE

FOR MORE INFORMATION, PLEASE CONTACT



Michael McBroom, SIOR | Senior Vice President
915.584.5511 x5 Office
michael@sonnybrown.com

The information contained herein has been obtained from sources deemed reliable; however, no guaranty or warranty can be made as to its accuracy, completeness or adequacy of this information. All offerings are subject to prior lease or withdrawal from the market without notice. All images shown are conceptual and designs are subject to change.



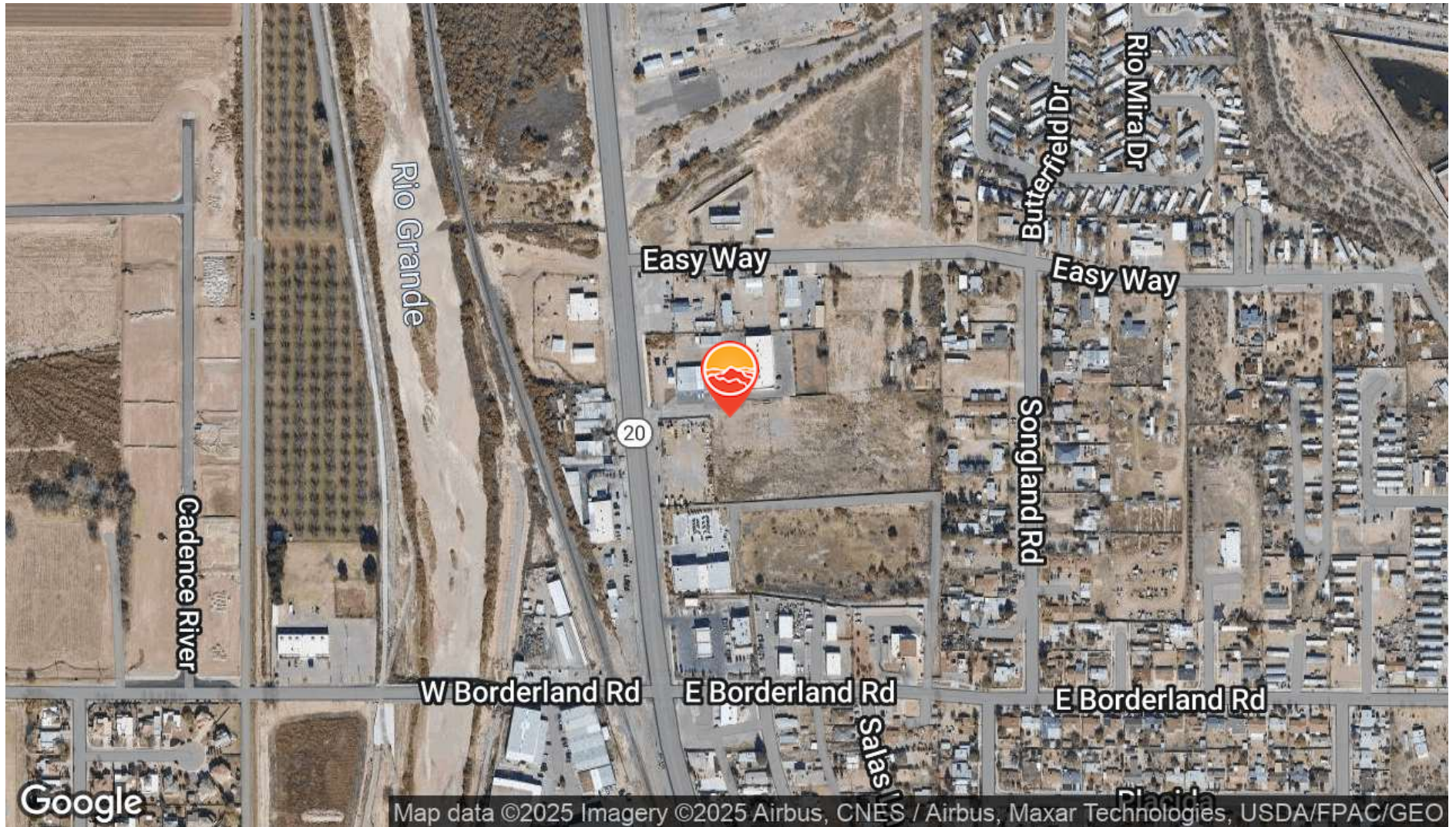
The Doniphan Estates

EL PASO, TX 79932

LAND FOR SALE:

±3.57 AC | SUBJECT TO OFFER

AERIAL VIEW



FOR SALE INFORMATION, PLEASE CONTACT
MICHAEL MCBROOM, SIOR, SENIOR VICE PRESIDENT
915.584.5511 x5 Office | michael@sonnybrown.com

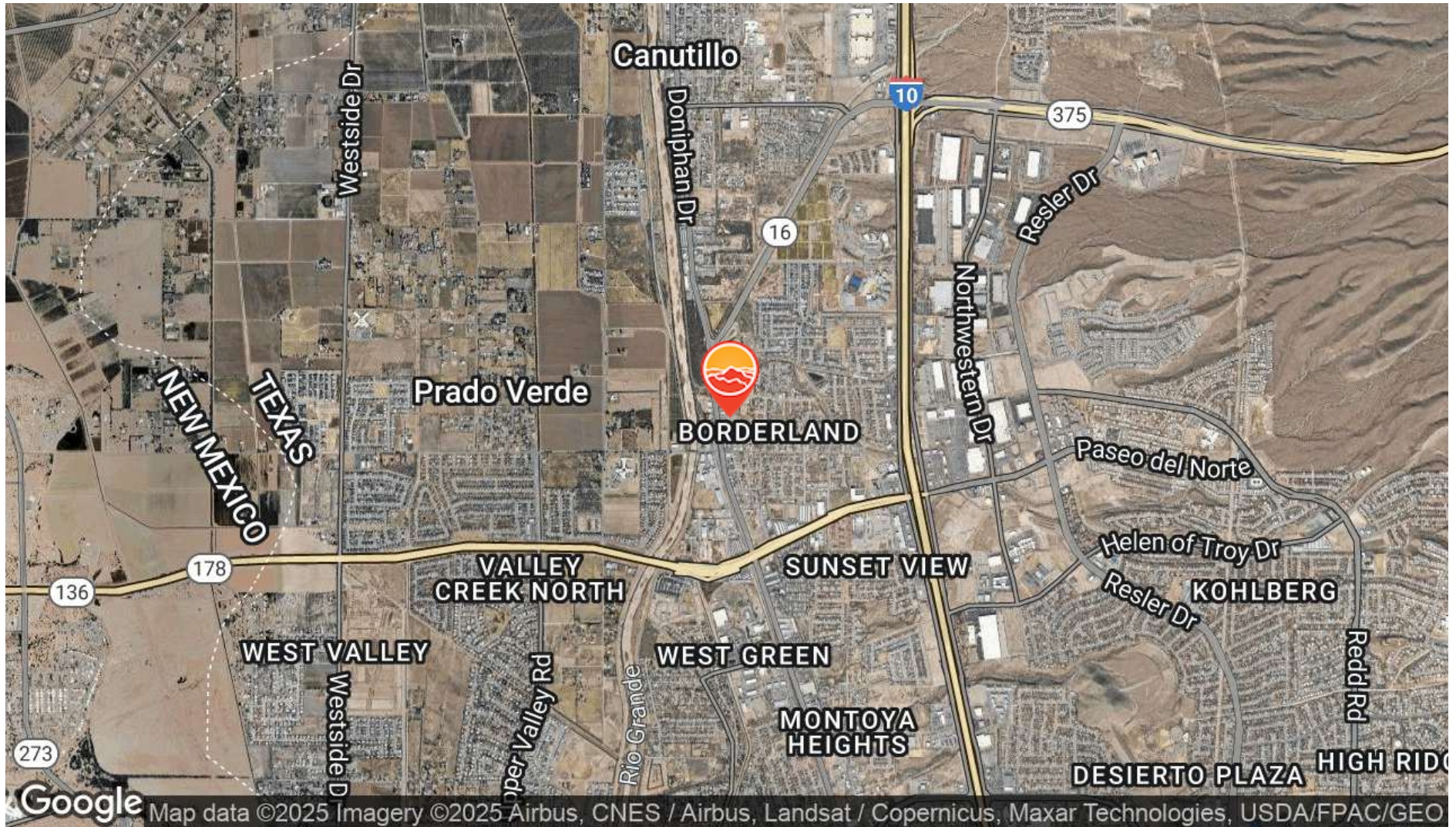
The Doniphan Estates

EL PASO, TX 79932

LAND FOR SALE:

±3.57 AC | SUBJECT TO OFFER

AERIAL MAP



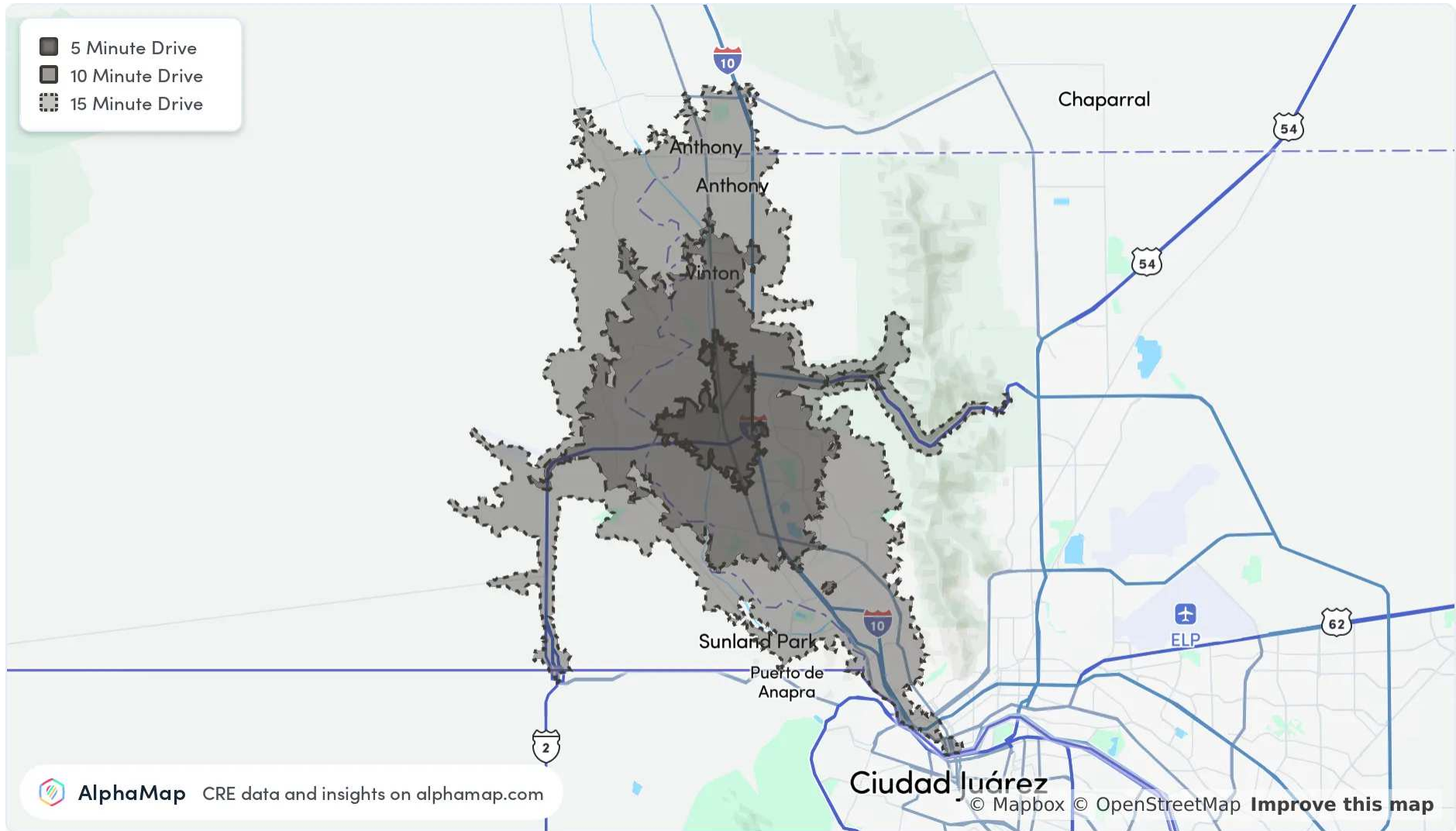
The Doniphan Estates

EL PASO, TX 79932

LAND FOR SALE:

±3.57 AC | SUBJECT TO OFFER

AREA ANALYTICS



The Doniphan Estates

EL PASO, TX 79932

LAND FOR SALE:

±3.57 AC | SUBJECT TO OFFER

AREA ANALYTICS

POPULATION	5 MINUTES	10 MINUTES	15 MINUTES
Total Population	17,409	90,498	182,361
Average Age	36	38	39
Average Age (Male)	35	37	38
Average Age (Female)	37	40	40

HOUSEHOLD & INCOME	5 MINUTES	10 MINUTES	15 MINUTES
Total Households	5,779	31,651	66,493
Persons per HH	3	2.9	2.7
Average HH Income	\$97,588	\$102,606	\$96,193
Average House Value	\$248,627	\$272,663	\$270,827
Per Capita Income	\$32,529	\$35,381	\$35,627

Map and demographics data derived from AlphaMap



FOR SALE INFORMATION, PLEASE CONTACT
MICHAEL MCBROOM, SIOR, SENIOR VICE PRESIDENT
915.584.5511 x5 Office | michael@sonnybrown.com