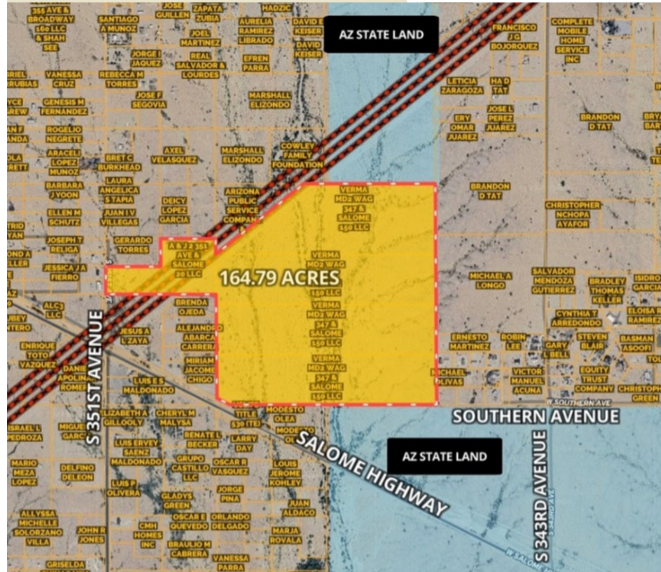


164.79 Acres Potential **Battery Storage** Site

Situated in Tonopah Arizona

Located in a qualified opportunity zone!



Three 500KV lines go through the property. In addition site is located less than 2 miles from Palo Verde Plant.

Rare Large Acreage Parcel with Few left in this area

Adjoins State Land on the North and South increasing the potential for expansion.

Industrial Potential Property

Recent Cipriana Purchase represents a \$20 billion dollar data center investment in Buckeye less than 5 miles away

Can be divided and configured to your design

Maricopa County
Parcel Numbers
504-33-097
504-33-098
504-33-099
504-33-100
504-33-914



JVERMA@VERMLAND.COM

480-452-2952

WWW.VERMLAND.COM