



PROPERTY DESCRIPTION

- ▶ Turn Key Bar/Venue/Restaurant Space
 - ▶ Approx. 4,370 SF
 - ▶ Available January 2026
- ▶ Lease Rate: Call for Pricing
- ▶ Full Bar Setup, Large Open Floor Plan, and Small Kitchen (No Hood) in Place.
- ▶ Excellent Location in Historic Springfield with 1748 Bakehouse, Crispy's, Juice Wine Bar, The Block Skate Supply, & More on the Block!
- ▶ 20,000 ± Cars Per Day on Main Street
- ▶ 18,000 ± Cars Per Day on 8th Street

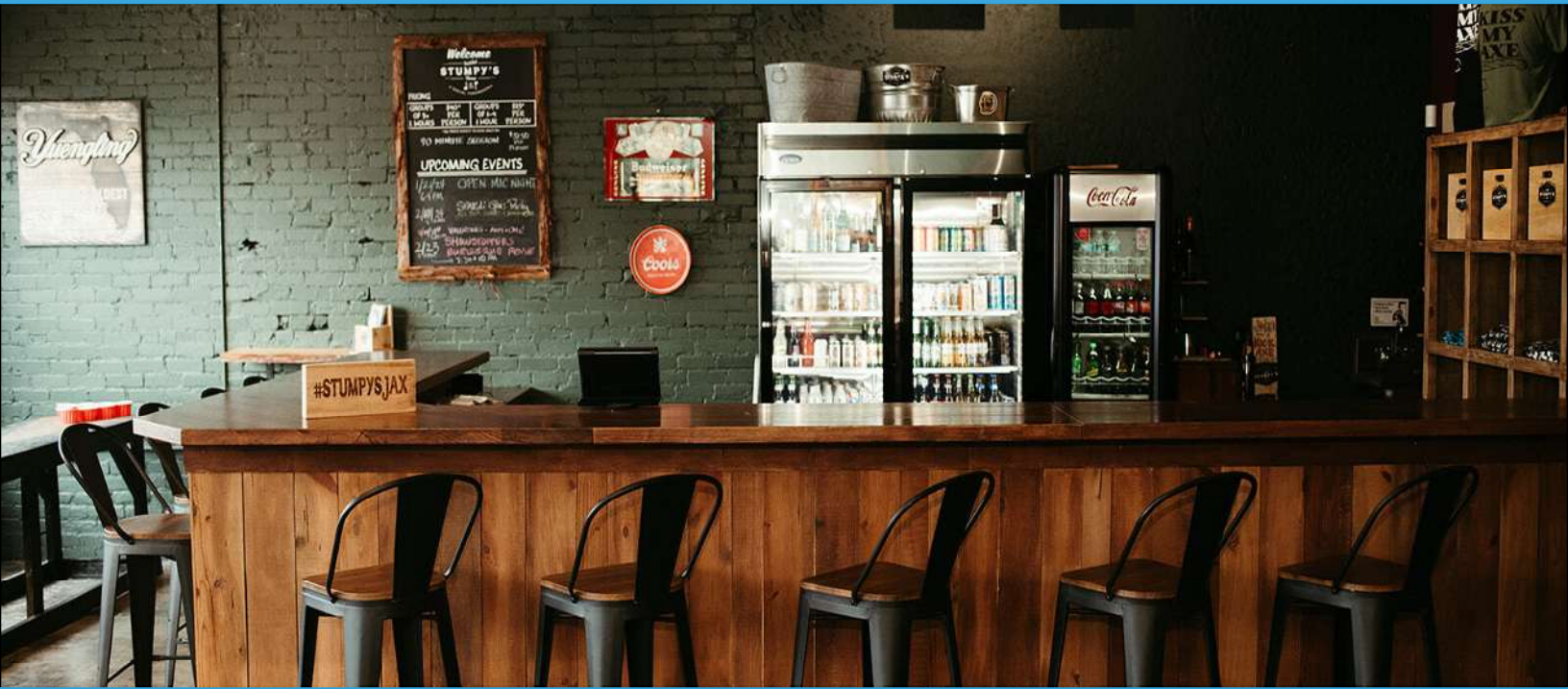


o. 904.241.1151

ELIAS HIONIDES | ehionides@petrajax.com

RICHARD TRENDL | rich@petrajax.com

ASHLEIGH SHIM | ashleigh@petrajax.com



ABOUT

Turn-key bar/venue/restaurant space in the heart of Historic Springfield. Standalone building with a highly recognizable facade on bustling block. Situated at the highly visible corner of Main and 8th Streets, on the best block in Historic Springfield, this location provides unmatched foot traffic and neighborhood appeal.

INTERIOR PHOTOS - DOWNSTAIRS



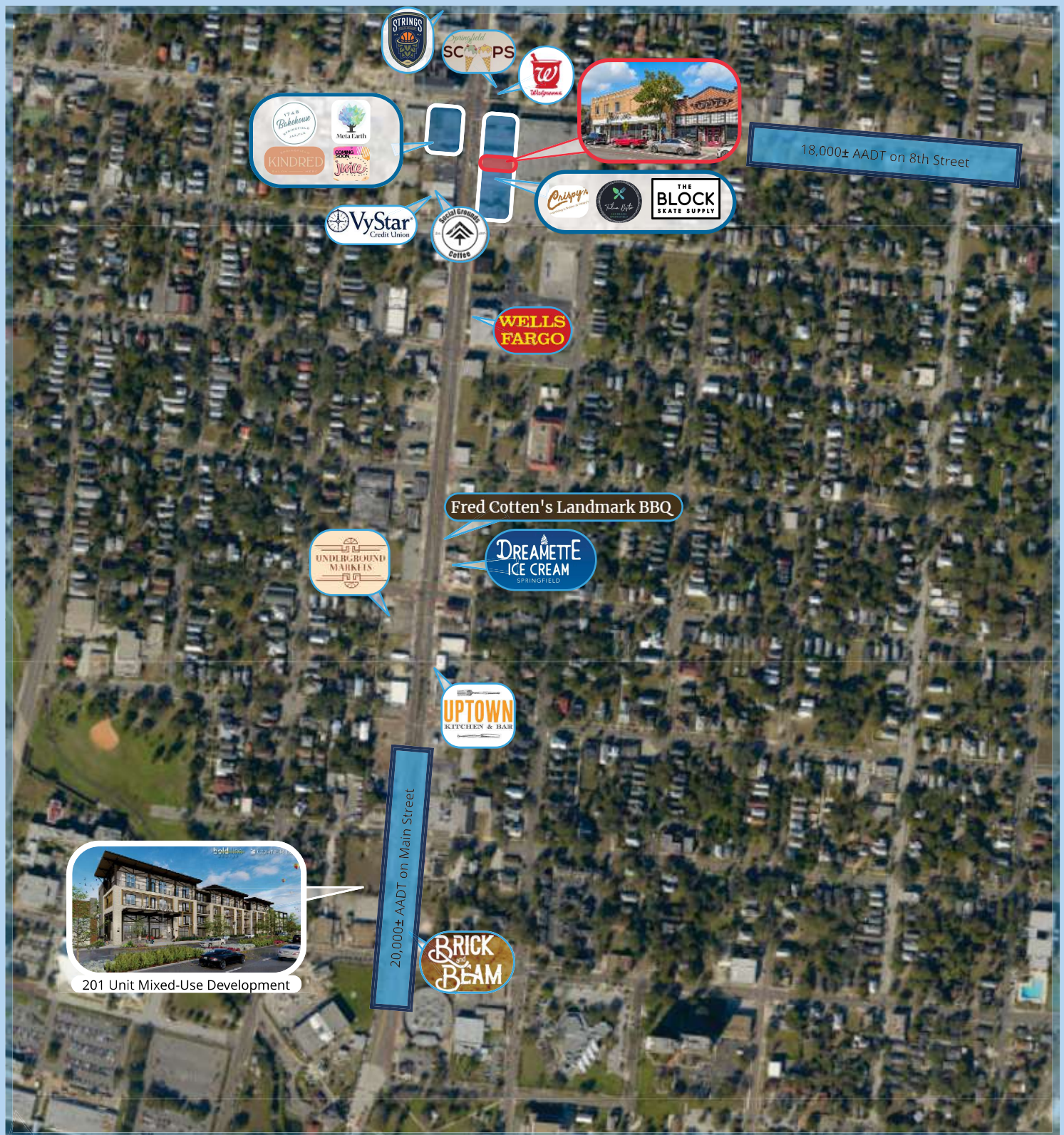
o. 904.241.1151

ELIAS HIONIDES | ehionides@petrajax.com

RICHARD TRENDEL | rich@petrajax.com

ASHLEIGH SHIM | ashleigh@petrajax.com

AERIAL VIEW

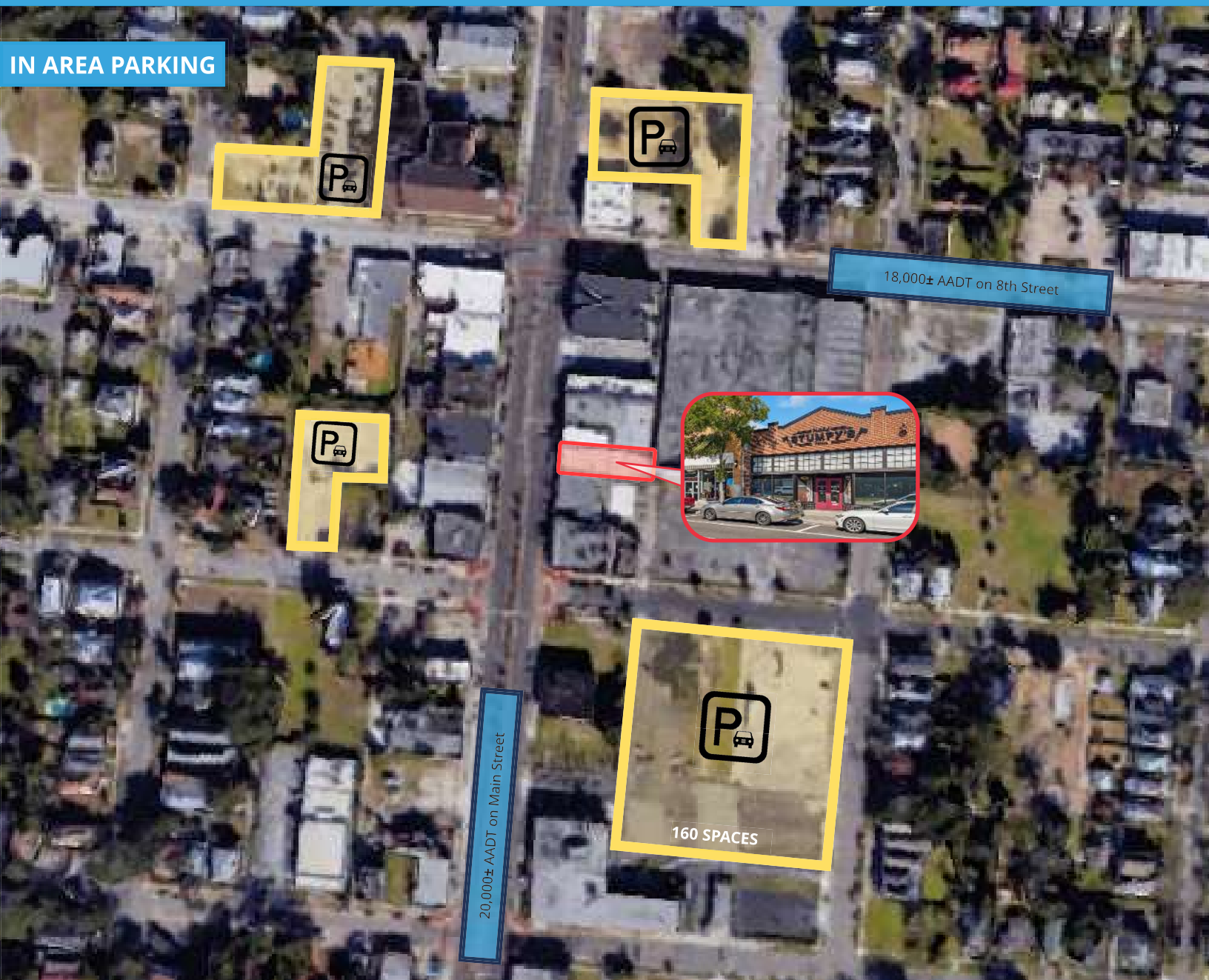


o. 904.241.1151

ELIAS HIONIDES | ehionides@petrajax.com

RICHARD TRENDL | rich@petrajax.com

ASHLEIGH SHIM | ashleigh@petrajax.com



DEMOGRAPHICS

	1-Mile	3-Mile	5-Mile
POPULATION			
2024 Total Population:	16,006	86,236	221,086
Median Age:	40	39	39
HOUSEHOLDS			
2024 Total Households:	6,212	36,562	91,396
Average Household Income:	\$30,716	\$32,533	\$41,601

o. 904.241.1151

ELIAS HIONIDES | ehionides@petrajax.com

RICHARD TRENDEL | rich@petrajax.com

ASHLEIGH SHIM | ashleigh@petrajax.com