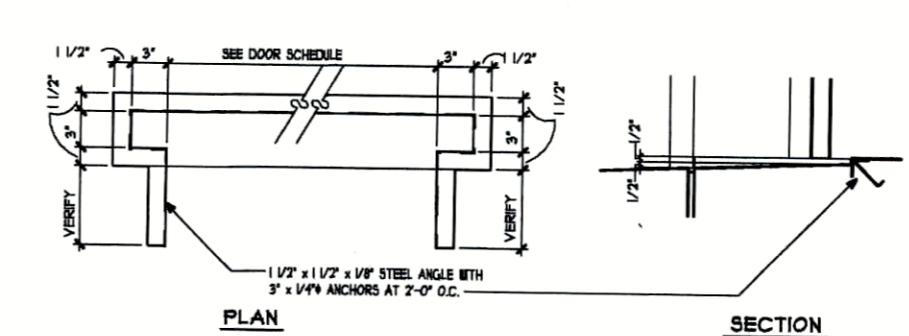
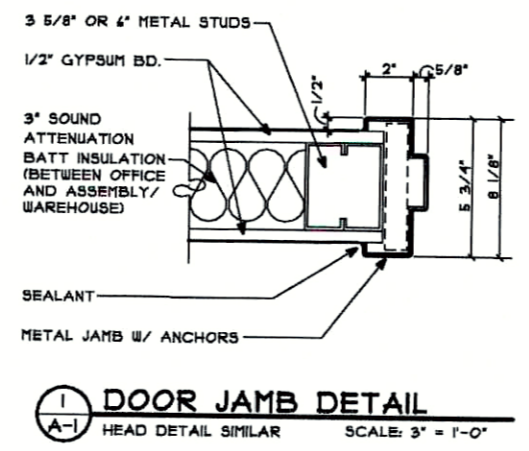


FLOOR PLAN

SCALE: 1/8" = 1'-0"

| ROOM FINISH SCHEDULE | | | | | | |
|----------------------|------------------|-------|------|-------|---------|---------|
| ROOM NO. | ROOM NAME | FLOOR | BASE | WALLS | CEILING | REMARKS |
| 101 | RECEPTION | | | | | |
| 102 | SHOWROOM | | | | | |
| 103 | DISPLAY ROOM | | | | | |
| 104 | OFFICE | | | | | |
| 105 | OFFICE | | | | | |
| 106 | OFFICE | | | | | |
| 107 | OFFICE | | | | | |
| 108 | TOOL ROOM | | | | | |
| 109 | CLOSET | | | | | |
| 110 | HANITOR | | | | | |
| 111 | TOILET | | | | | |
| 112 | TOILET | | | | | |
| 113 | TOILET | | | | | |
| 114 | TOILET | | | | | |
| 115 | CLOSET | | | | | |
| 116 | CORRIDOR | | | | | |
| 117 | STORAGE / COPIER | | | | | |
| 118 | LUNCH ROOM | | | | | |
| 119 | LIBRARY | | | | | |
| 120 | ENGINEERING AREA | | | | | |
| 121 | STORAGE | | | | | |
| 122 | OFFICE | | | | | |
| 123 | ENGINEERING AREA | | | | | |
| 124 | SMALL CONF. RM. | | | | | |
| 125 | CORRIDOR | | | | | |
| 126 | OFFICE | | | | | |
| 127 | OFFICE | | | | | |
| 128 | SALES AREA | | | | | |
| 129 | OFFICE | | | | | |
| 130 | PURCHASING AREA | | | | | |
| 131 | ASSEMBLY AREA | | | | | |
| 132 | SHIPPING | | | | | |
| 133 | WAREHOUSE | | | | | |

| DOOR & FRAME SCHEDULE | | | | | | | | | |
|-----------------------|-----------------|------------------|--------------------------|----------------|-------------------|------------------------------|--|--|--|
| DOOR NO. | DOOR | | FRAME | | FIRE RATING LABEL | REMARKS | | | |
| | SIZE | MAT TYPE GLASS | MAT TYPE HEAD JAMB THRES | | | | | | |
| 1 | 2'-0" X 7'-0" | 1 3/4" ALUR | A | 1/4" TEMP ALUR | | | | | |
| 2 | 3'-0" X 6'-6" | X 1 3/4" ID.S.C. | C | | | REUSE EXISTING DOOR | | | |
| 3 | 3'-0" X 6'-6" | X 1 3/4" ID.S.C. | C | | | | | | |
| 4 | 3'-0" X 6'-6" | X 1 3/4" ID.S.C. | C | | | | | | |
| 5 | 3'-0" X 6'-6" | X 1 3/4" ID.S.C. | C | | | | | | |
| 6 | 3'-0" X 6'-6" | X 1 3/4" ID.S.C. | C | | | | | | |
| 7 | 3'-0" X 6'-6" | X 1 3/4" ID.S.C. | C | | | | | | |
| 8 | 3'-0" X 6'-6" | X 1 3/4" ID.S.C. | C | | | | | | |
| 9 | 3'-0" X 6'-6" | X 1 3/4" ID.S.C. | C | | | | | | |
| 10 | 3'-0" X 6'-6" | X 1 3/4" ID.S.C. | C | | | | | | |
| 11 | 3'-0" X 6'-6" | X 1 3/4" ID.S.C. | C | | | | | | |
| 12 | 3'-0" X 6'-6" | X 1 3/4" ID.S.C. | C | | | | | | |
| 13 | 3'-0" X 6'-6" | X 1 3/4" ID.S.C. | C | | | | | | |
| 14 | 3'-0" X 6'-6" | X 1 3/4" ID.S.C. | C | | | | | | |
| 15 | 3'-0" X 6'-6" | X 1 3/4" ID.S.C. | C | | | | | | |
| 16 | 3'-0" X 6'-6" | X 1 3/4" ID.S.C. | C | | | | | | |
| 17 | 3'-0" X 6'-6" | X 1 3/4" ID.S.C. | C | | | | | | |
| 18 | 3'-0" X 7'-0" | X 1 3/4" ID.S.C. | C | | | | | | |
| 19 | 3'-0" X 6'-6" | X 1 3/4" ID.S.C. | C | | | | | | |
| 20 | 3'-0" X 6'-6" | X 1 3/4" ID.S.C. | C | | | | | | |
| 21 | 3'-0" X 6'-6" | X 1 3/4" ID.S.C. | C | | | | | | |
| 22 | 3'-0" X 6'-6" | X 1 3/4" ID.S.C. | C | | | | | | |
| 23 | 3'-0" X 6'-6" | X 1 3/4" ID.S.C. | C | | | | | | |
| 24 | 3'-0" X 6'-6" | X 1 3/4" ID.S.C. | C | | | | | | |
| 25 | 3'-0" X 6'-6" | X 1 3/4" ID.S.C. | C | | | REUSE EXISTING DOOR | | | |
| 26 | 3'-0" X 6'-6" | X 1 3/4" ID.S.C. | C | | | | | | |
| 27 | 3'-0" X 6'-6" | X 1 3/4" ID.S.C. | C | | | | | | |
| 28 | 3'-0" X 7'-0" | X 1 3/4" ID.S.C. | C | | | | | | |
| 29 | 14'-0" X 14'-0" | METAL G | | | 2/A-1 | STANDARD METAL BLDG. DETAILS | | | |
| 30 | 9'-0" X 9'-0" | METAL G | | | | STANDARD METAL BLDG. DETAILS | | | |
| 31 | 3'-0" X 7'-0" | X 1 3/4" ID.S.C. | C | | | STANDARD METAL BLDG. DETAILS | | | |
| 32 | 9'-0" X 9'-0" | METAL G | | | | STANDARD METAL BLDG. DETAILS | | | |
| 33 | 4'-0" X 4'-0" | METAL G | | | | STANDARD METAL BLDG. DETAILS | | | |
| 34 | 4'-0" X 4'-0" | METAL G | | | | STANDARD METAL BLDG. DETAILS | | | |
| 35 | 4'-0" X 4'-0" | METAL G | | | | STANDARD METAL BLDG. DETAILS | | | |
| 36 | 3'-0" X 7'-0" | X 1 3/4" ID.S.C. | C | | | STANDARD METAL BLDG. DETAILS | | | |
| 37 | 3'-0" X 7'-0" | X 1 3/4" ID.S.C. | C | | | STANDARD METAL BLDG. DETAILS | | | |



BUILDING CODE NOTES

- VIRGINIA UNIFORM STATWIDE BUILDING CODE - BOCA 1994.
- BUILDING USE GROUP: F-2 LOW - HAZARD FACTORY / INDUSTRIAL METAL FABRICATION AND ASSEMBLY)
B - BUSINESS
- BUILDING SHALL BE NONSEPARATED MIXED USE GROUP
- MINIMUM BUILDING CONSTRUCTION CLASSIFICATION: 2C NONCOMBUSTIBLE UNPROTECTED
- BUILDING WILL HAVE AUTOMATIC FIRE SUPPRESSION SYSTEM.
- BUILDING AREA: F-2 = 28,800 SF
B = 4,238 SF
CANOPY = 524 SF
- ALLOWABLE BUILDING AREA: 14,400 SF F-2 FACTORY, 14,400 SF B BUSINESS
AUTOMATIC SPRINKLER SYSTEM INCREASE: F-2 = 200% X 14,400 SF = 28,800 SF
B = 200% X 14,400 SF = 28,800 SF
OPEN AREA INCREASE: F-2 = (822-25% / 822) X 2 = 150% X 14,400 SF = 21,600 SF
B = (822-25% / 822) X 2 = 150% X 14,400 SF = 21,600 SF
TOTAL ALLOWABLE BUILDING AREA: F-2 = 14,400 SF + 28,800 SF + 21,600 SF = 64,800 SF
B = 14,400 SF + 28,800 SF + 21,600 SF = 64,800 SF
F-2 OR B AREA GOVERNS TOTAL ALLOWABLE BUILDING AREA: 64,800 SF
- BUILDING OCCUPANCY: S-1 = 28,800 SF / 300 = 94
B = 4,238 SF / 100 = 42
ACTUAL OCCUPANCY: F-2 = 20
B = 25
- EGRESS TRAVEL DISTANCES: WAREHOUSE - 250 FEET W/ SPRINKLER SYSTEM
BUSINESS - 250 FEET W/ SPRINKLER SYSTEM
- EXIT DOOR WIDTH REQUIRED: F-2 - 14 x .15 = 2.1'
PROVIDED - 14'
B - 42 x .15 = 6.3'
PROVIDED - 12'