

CORPORATE COURT

BAY AREA

2046-2050 Corporate Court
San Jose, CA 95131



FOR LEASE

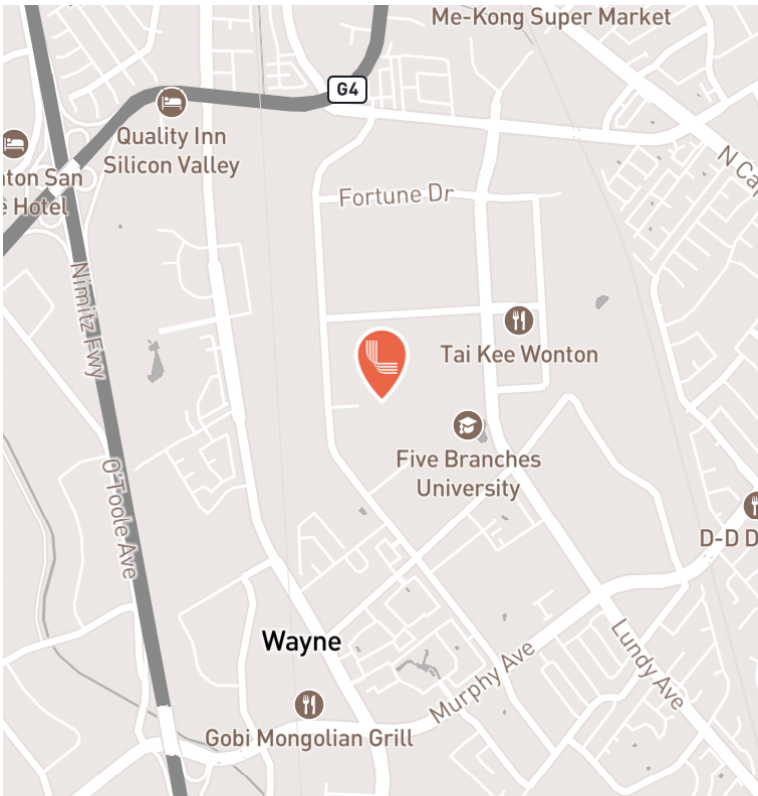
2046-2050

±13,114 - 55,124 SF



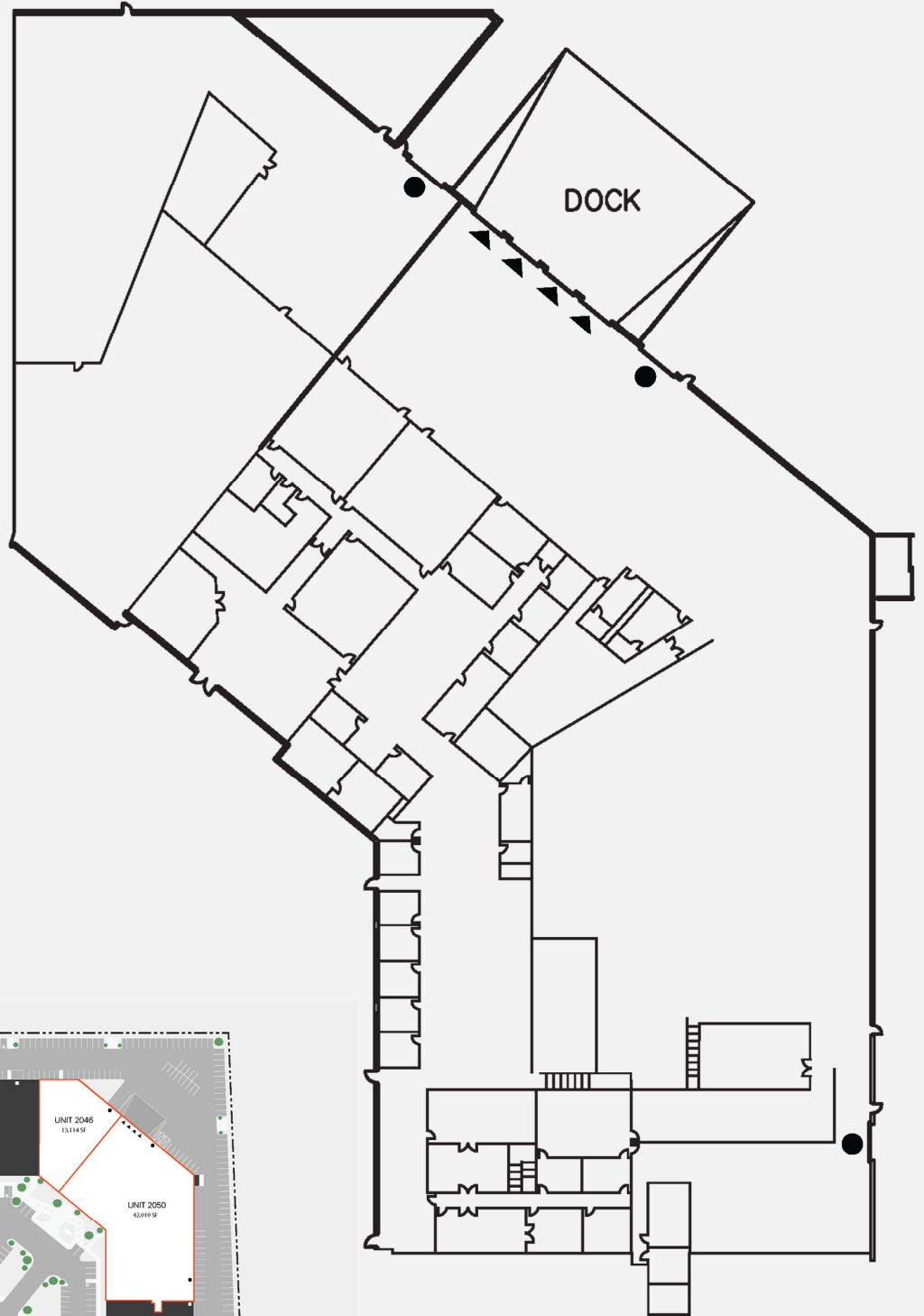
LEASED BY

Colliers



PROPERTY HIGHLIGHTS

Available Space	±13,114 - 55,124 SF
Build Out	±30% Office area; ±20% Assembly/lab with drop ceiling; ±50% Open ceiling warehouse/manufacturing with HVAC
Dock High / Grade Level	4 DH / 3 GL
Power	800 amps @ 277/480 Volts
Clear Height	18'-22'
Parking	±3.8/1,000
Date Available	May 1, 2026



▲ Dock High Door ● Grade Level Door

CONTACT INFORMATION

2046-2050 Corporate Court
San Jose, CA 95131

Ed Hofer, SIOR

ed.hofer@colliers.com
(408) 482-4182

CA Lic.00923494

Emerson Hofer

emerson.hofer@colliers.com
(408) 472-9129

CA Lic. 02065843

Dave Schmidt, SIOR

david.schmidt@colliers.com
(408) 316-6611

CA Lic. 00821451

This document is for informational purposes only and does not constitute an offer or acceptance of a lease. Any lease agreement must be in writing and signed by the landlord. No representations or warranties are made except as expressly stated in a signed lease. Information is provided "as is" and may be subject to errors or change without notice.



LEASED BY

