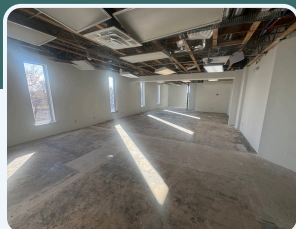




MILLCREEK OFFICE AVAILABLE FOR LEASE

3920 SOUTH 1100 EAST, MILLCREEK, UTAH 84124



PROPERTY INFORMATION

- ✓ SUITE 315: 1,527 RSF
- ✓ SUITE 330: 2,093 RSF
- ✓ RECENTLY REMODELED COMMON AREAS
- ✓ PARKING RATIO: 4.5/1000 SF
- ✓ EASY ACCESS TO 1-15/1-215
- ✓ ADJACENT TO ST. MARK'S HOSPITAL

DEMOGRAPHICS

	1 Mile	3 Mile	5 Mile
Population	19,237	147,323	332,521
Households	8,158	58,832	129,915
Avg. Household Income	\$56,299	\$58,052	\$61,044

TRAFFIC COUNTS

3900 South: 26,925 Annual Average Daily Traffic
1100 East: 21,605 Annual Average Daily Traffic

CONTACT US

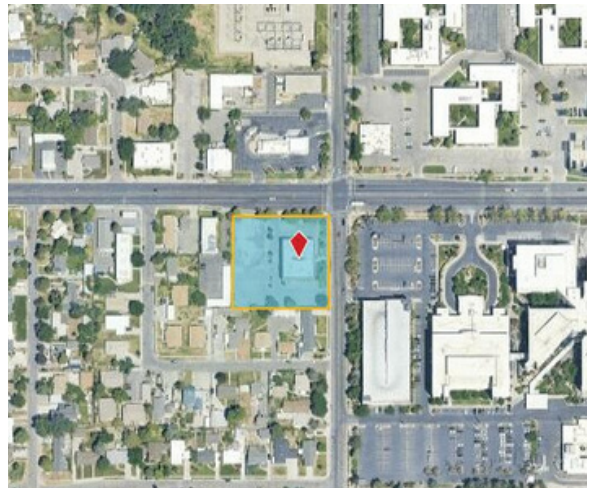
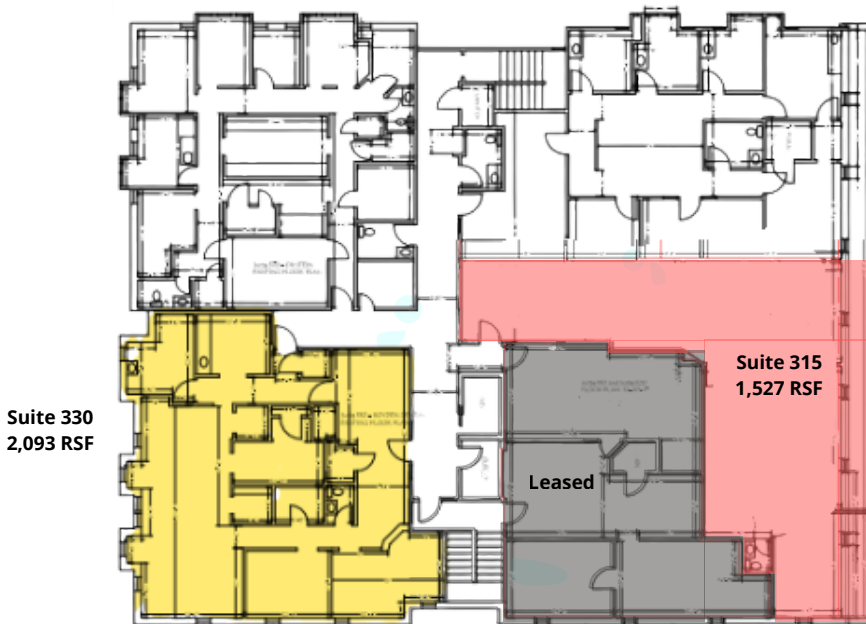
KELLEN KONCAR

✉ kellen@cresutah.com 📞 801-824-1311 🌐 www.cresutah.com 📍 2040 E. Murray Holladay Road Suite 106 Holladay, UT

Tel: 801.876.6070 📞

MILLCREEK OFFICE AVAILABLE FOR LEASE

3920 SOUTH 1100 EAST, MILLCREEK, UTAH 84124



This information is given with the understanding that all negotiations and/or real estate activity related to the property described above shall be conducted through this CRE Specialists office. The above information while not guaranteed, was obtained from sources we believe to be reliable.

CONTACT US

KELLEN KONCAR

✉ kellen@cresutah.com ☎ 801-824-1311 🌐 www.cresutah.com 📍 2040 E. Murray Holladay Road Suite 106 Holladay, UT

Tel: 801.876.6070 📞