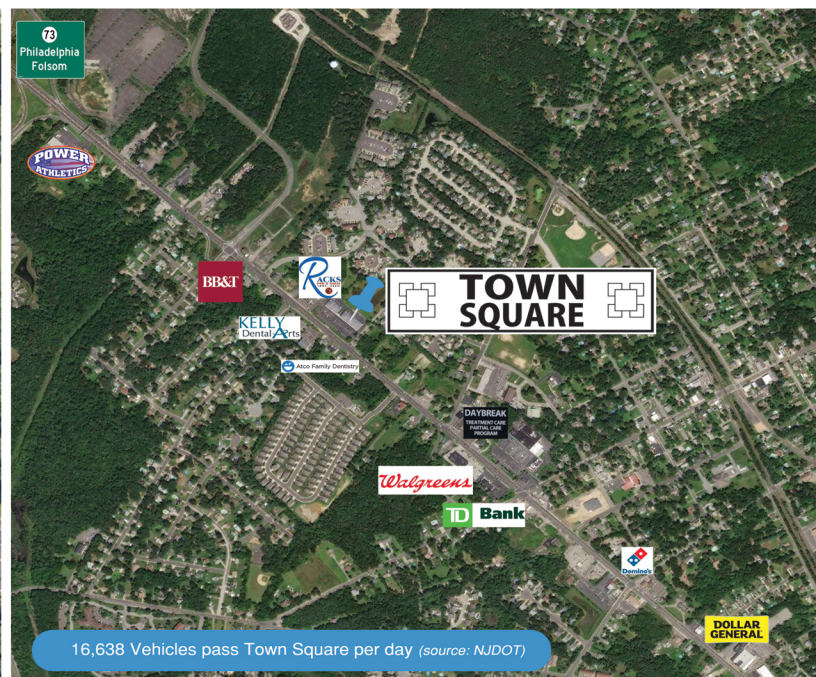
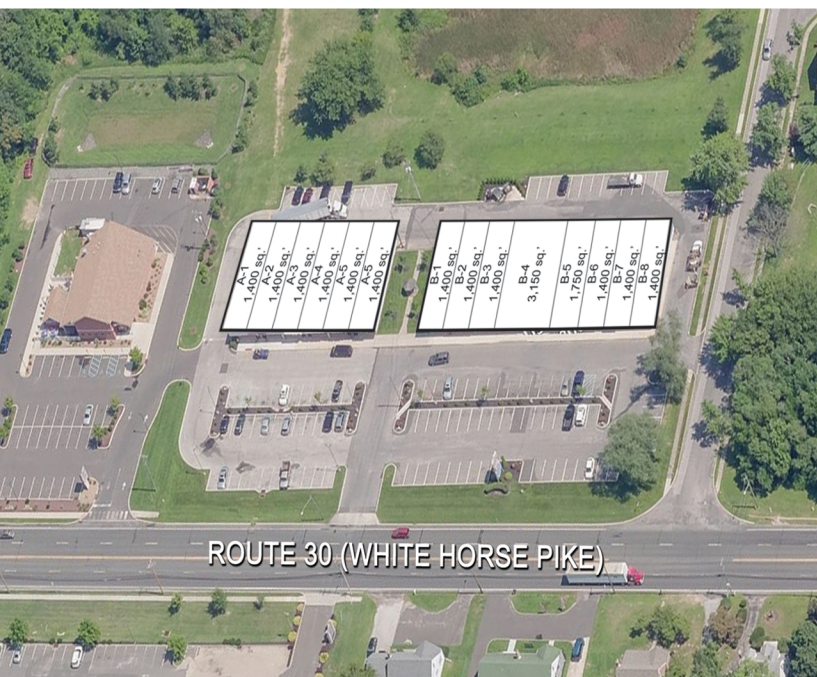


TOWN SQUARE

302 Rt. 30, Atco, NJ 08004

This property is well positioned in a growing trade area. With high traffic counts, good visibility, and easy access to the residential properties directly behind this center, you will find this location perfect for your business.



VisionPropertyGroupLLC.com

Leasing Info: John DiDonato 609-561-7222 (cell) 609-457-7169