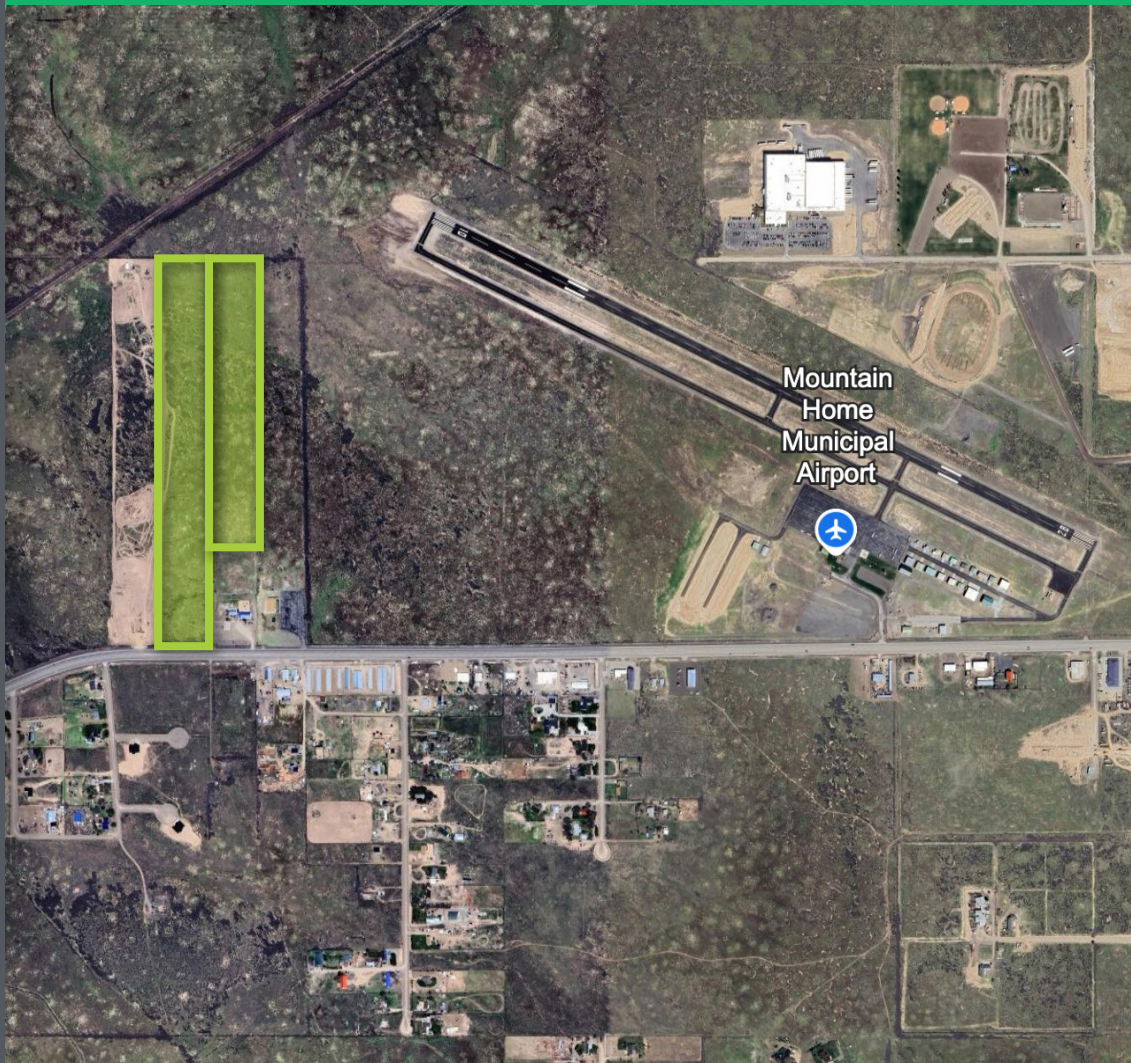


FOR SALE

MOUNTAIN HOME COMMERCIAL LAND



PROPERTY INFORMATION

ADDRESS	TBD Airbase Rd Mountain Home, ID 83647
ZONING:	C2 Elmore County
COM PLAN:	Commercial
COUNTY	Elmore
ACRES	±35 Acres
UTILITIES	Well and Septic
PRICE	\$499,000 (\$14,257/acre)

HIGHLIGHTS

- Ideally located between the City of Mountain Home, Mountain Home Air Force Base, and the regional airport—offering excellent connectivity.
- Flat, development-ready topography with power conveniently located across the road
- Perfectly suited for a laydown yard, solar project, or a variety of commercial or industrial uses
- Just 45 minutes to Boise via direct access to nearby I-84
- Strong upside potential for land investment or future commercial development
- Located within the City of Mountain Home's Area of Impact, positioning the property well for future annexation and infrastructure support
- Two major proposed casinos will be located less than 20 minutes from the site and are projected to bring thousand of jobs to the area in the coming years

This information, while not guaranteed, is from sources we believe to be reliable.
This data is subject to price change, corrections, errors, omissions, prior sale, and/or withdrawal.

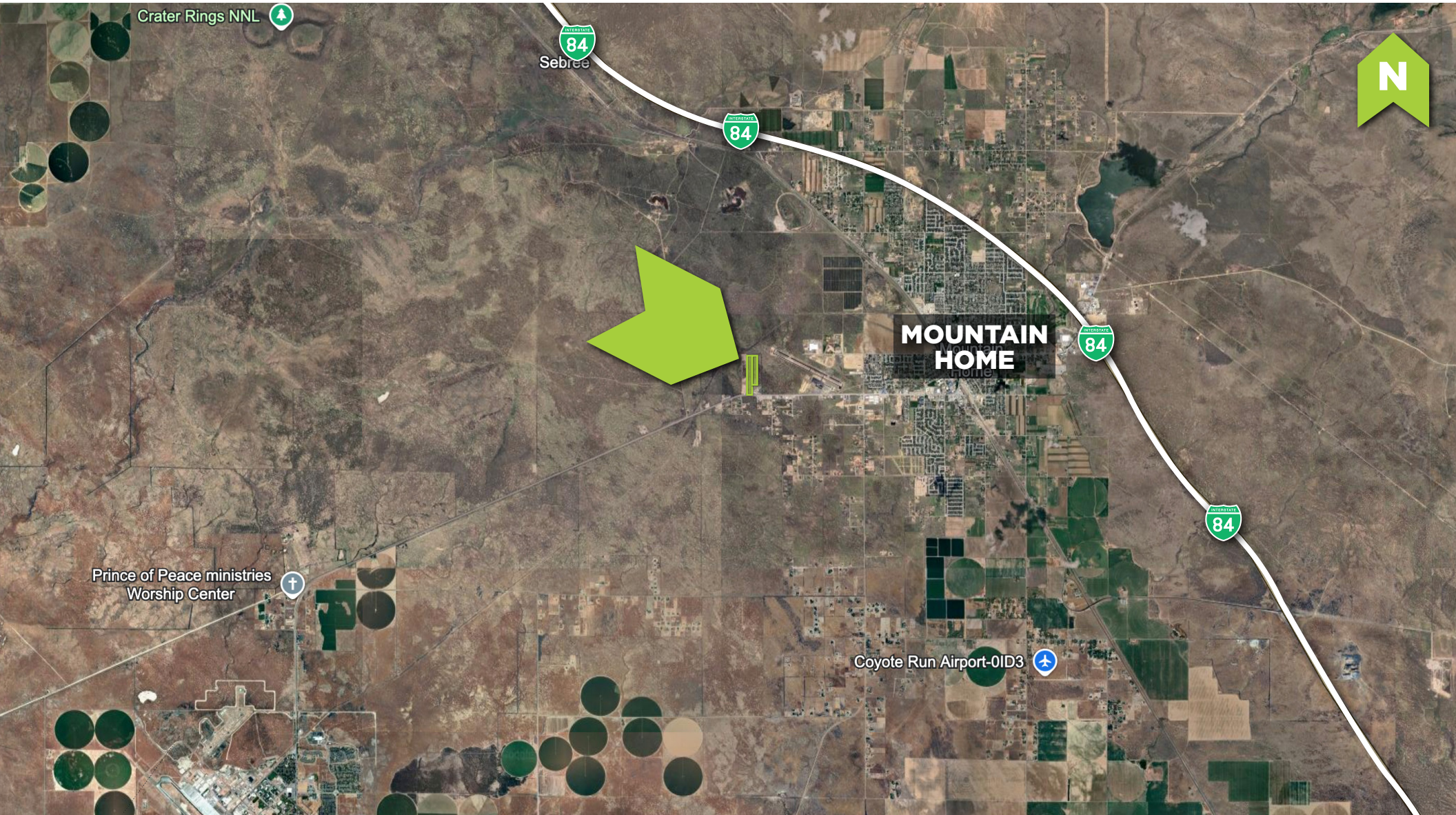
BRIAN RALLENS

208.761.0924 | brian@rallensrealty.com

RALLENS REALTY CONSULTANTS | 401 W FRONT ST, SUITE 307, BOISE, ID 83702 | 208.996.1055



TBD AIRBASE RD MOUNTAIN HOME, ID 83647



BRIAN RALLENS

208.761.0924 | brian@rallensrealty.com



rallensrealty.com

TBD AIRBASE RD MOUNTAIN HOME, ID 83647



BRIAN RALLENS

208.761.0924 | brian@rallensrealty.com



rallensrealty.com

TBD AIRBASE RD MOUNTAIN HOME, ID 83647

AVAILABLE PARCELS

ID	PARCEL	ADDRESS	ACRES
A	#RP03S06E287940	AIRBASE RD	20 ACRES
B	#RP03S06E287980	AIRBASE RD	15 ACRES

A B

Mountain
Home
Municipal
Airport



AIRBASE RD

AIRBASE RD

BRIAN RALLENS

208.761.0924 | brian@rallensrealty.com



rallensrealty.com