

# King of Prussia

For more, contact us at:

☎ (215) 285-8679

✉ info@medcoshare.com

🌐 www.medcoshare.com



Modern Lobby

## Available Now:

- Exam Rooms
- Counseling Rooms and Office Spaces
- Workstations

See Pricing Sheet or Contact us for more information



Counseling Room



Fully Furnished Exam Rooms

## Who are our Providers?

We have a range of independent providers from direct primary care and medical weight loss to addiction recovery specialists and nephrology.

## Location:

170 N Henderson Rd Suite 310,  
King of Prussia, PA 19406

- 5 min from the King of Prussia Mall
- 5 min from KOP Town Center
- Easy Access to I76 and I276
- 10 min from Children Hospital of Pennsylvania (CHOP)
- Growing residential area

## Amenities:

- Storage for equipment and supplies
- Cloud accessibility for HIPAA-compliant file storage
- ADA compliant access
- Ample parking space, Handicap parking
- Frequently sanitized contactless check-in area.

## Why MedCoShare and Medical Coworking?

Practice your way with us. Set your own schedule, build your practice in a low-risk environment without long-term, restrictive leases. Skip the hassle of administrative burden with our support staff (EHR, billing, scheduling, MA's). Even get your marketing (SEO, Web Design, Content Creation) covered for you with the MCS Services team.



Scan this QR Code to learn more about our King of Prussia, PA Office and Medical Coworking

# Marlton

For more, contact us at:

☎ (215) 285-8679

✉ info@medcoshare.com

🌐 www.medcoshare.com

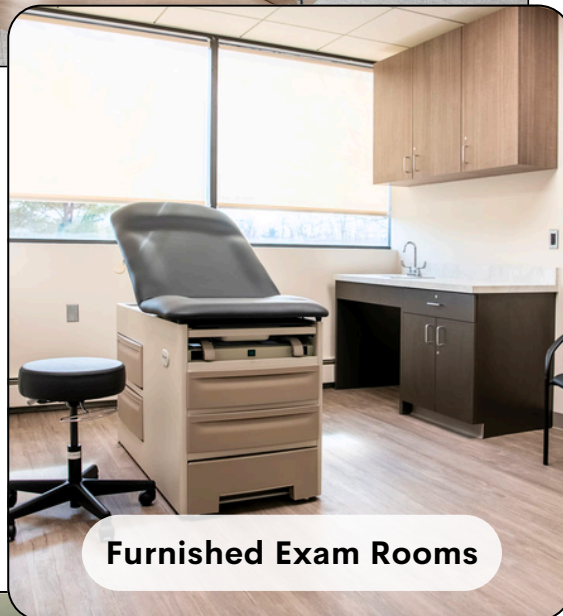


**Modern Lobby**

## Available Now:

- Exam Rooms
- Counseling Rooms and Office Spaces
- Workstations

See Pricing Sheet or Contact us for more information



**Furnished Exam Rooms**



**Counseling Room**

## Who are our Providers?

We have a range of independent providers from ENT specialists and Cardiologists to Fertility Care providers.

## Location:

5 Greentree Center Suite 117  
Marlton, NJ 08053

- 5 min from Marlton Square
- 5 min from grocery, shopping, and retail centers
- 20 min from Cherry Hill Mall
- Easy Access to Highway 73
- Growing Residential Community

## Amenities:

- Storage for equipment and supplies
- Cloud accessibility for HIPAA-compliant file storage
- ADA compliant access
- Ample parking space, Handicap parking
- Frequently sanitized contactless check-in area.

## Why MedCoShare and Medical Coworking?

Practice your way with us. Set your own schedule, build your practice in a low-risk environment without long-term, restrictive leases. Skip the hassle of administrative burden with our support staff (EHR, billing, scheduling, MA's). Even get your marketing (SEO, Web Design, Content Creation) covered for you with the MCS Services team.

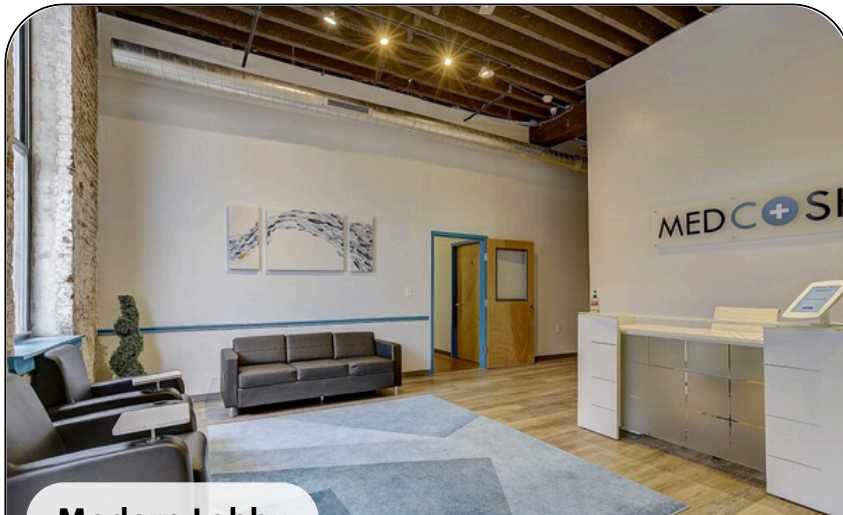


Scan this QR Code to learn more about our Marlton, NJ Office and Medical Coworking

# Philadelphia

For more, contact us at:

- 📞 (215) 285-8679
- ✉ info@medcoshare.com
- 🌐 www.medcoshare.com

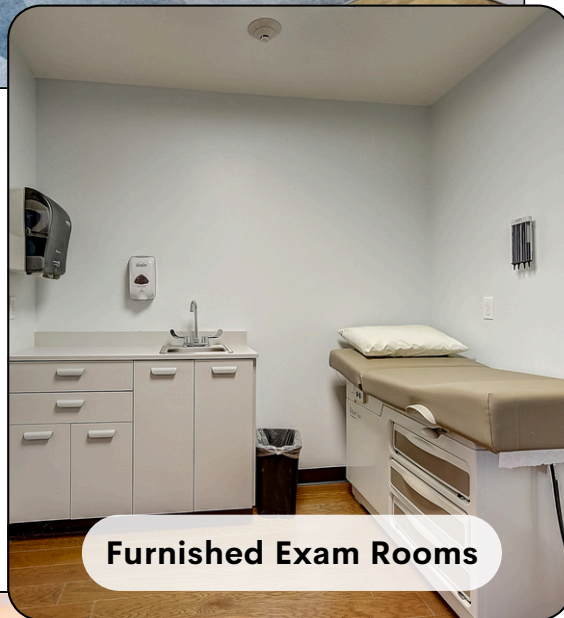


Modern Lobby

## Available Now:

- Exam Rooms
- Office Spaces
- Workstations

See Pricing Sheet or Contact us for more information



Furnished Exam Rooms

## Location:

2418 E York St. Philadelphia, PA 19125

- In the heart of Fishtown
- Growing Urban Community
- 10 Min from Temple University Main Campus
- Easy Access to public transport
- Just minutes from Center City

## Amenities:

- Storage for equipment and supplies
- Cloud accessibility for HIPAA-compliant file storage
- ADA compliant access
- Ample parking space, Handicap parking
- Frequently sanitized contact-less check-in area.



Heart of Fishtown

## Who are our Providers?

We have a range of independent providers from direct primary care and medical weight loss to addiction recovery specialists and dermatology.

## Why MedCoShare and Medical Coworking?

Practice your way with us. Set your own schedule, build your practice in a low-risk environment without long-term, restrictive leases. Skip the hassle of administrative burden with our support staff (EHR, billing, scheduling, MA's). Even get your marketing (SEO, Web Design, Content Creation) covered for you with the MCS Services team.



Scan this QR Code to learn more about our Philadelphia, PA Office and Medical Coworking