

FOR LEASE

1800 DOBBIN DR

SAN JOSE, CA 95133

±81,525 SF INDUSTRIAL SPACE FOR LEASE

Available Now



BRIAN MATTEONI
Executive Vice President
Lic. 00917296
+1 408 453 7407
brian.matteoni@cbre.com

BOB STEINBOCK
Senior Vice President
Lic. 01111853
+1 408 453 7424
bob.steinbock@cbre.com

DIVISIBLE TO ±40,000 SF
±81,525 SF



CBRE



1800-1810 DOBBIN DRIVE

SAN JOSE, CA 95133

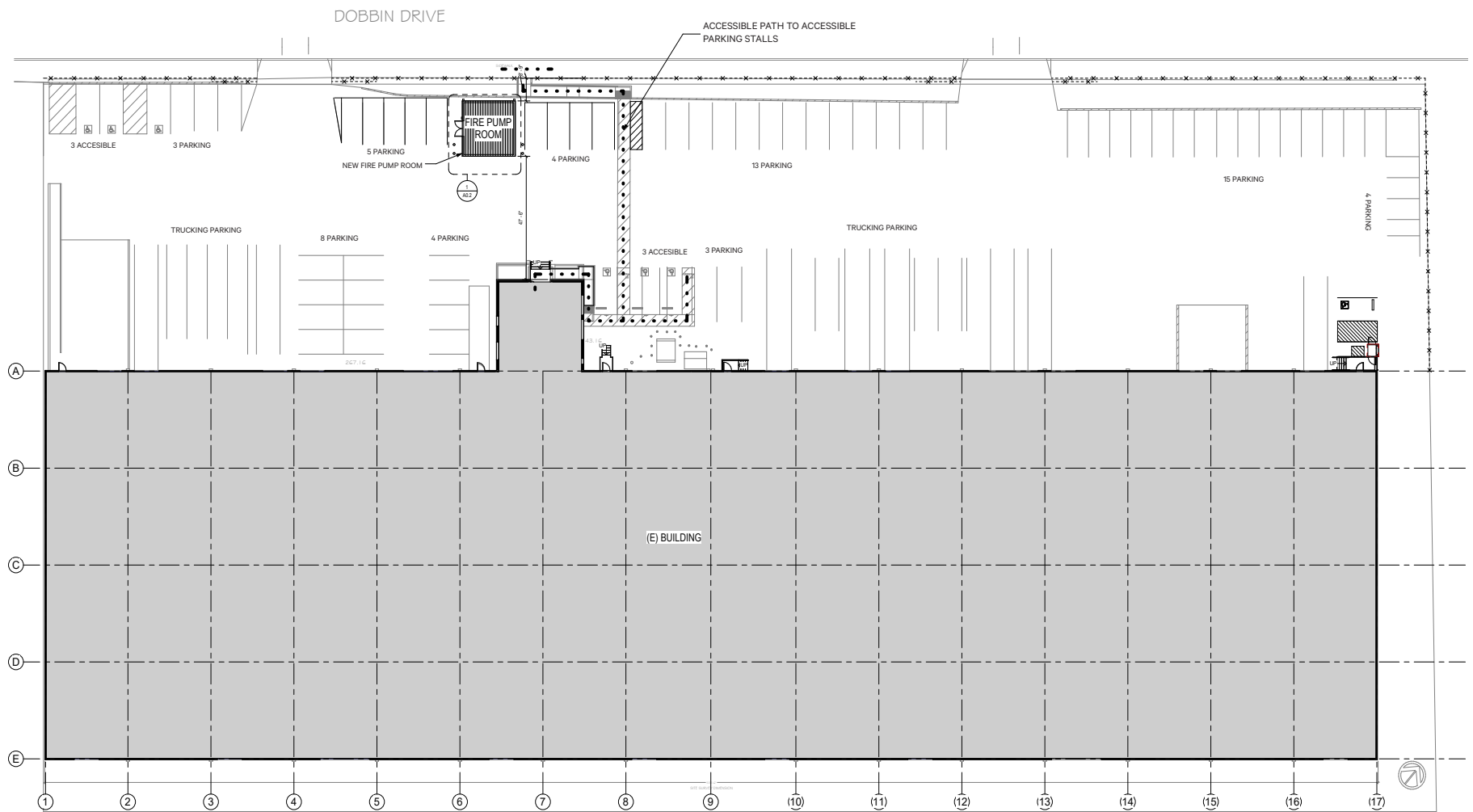
FOR LEASE

PROPERTY HIGHLIGHTS

- ±81,525 Square Feet (Divisible to 40,000)
- ±4,500 SF Main Office Core
- ±700 SF Secondary office with restrooms
- New LED Lights
- 12 Dock High Doors
- 4 Grade Level Ramps
- 28' Clear Height
- 2,600 Amps, 480 Volts
- Fenced Secured Site on 3.6 Acres
- Light Industrial Zoning
- ESFR Sprinklers
- Close Proximity to new San Jose BART Station
- Call to Show



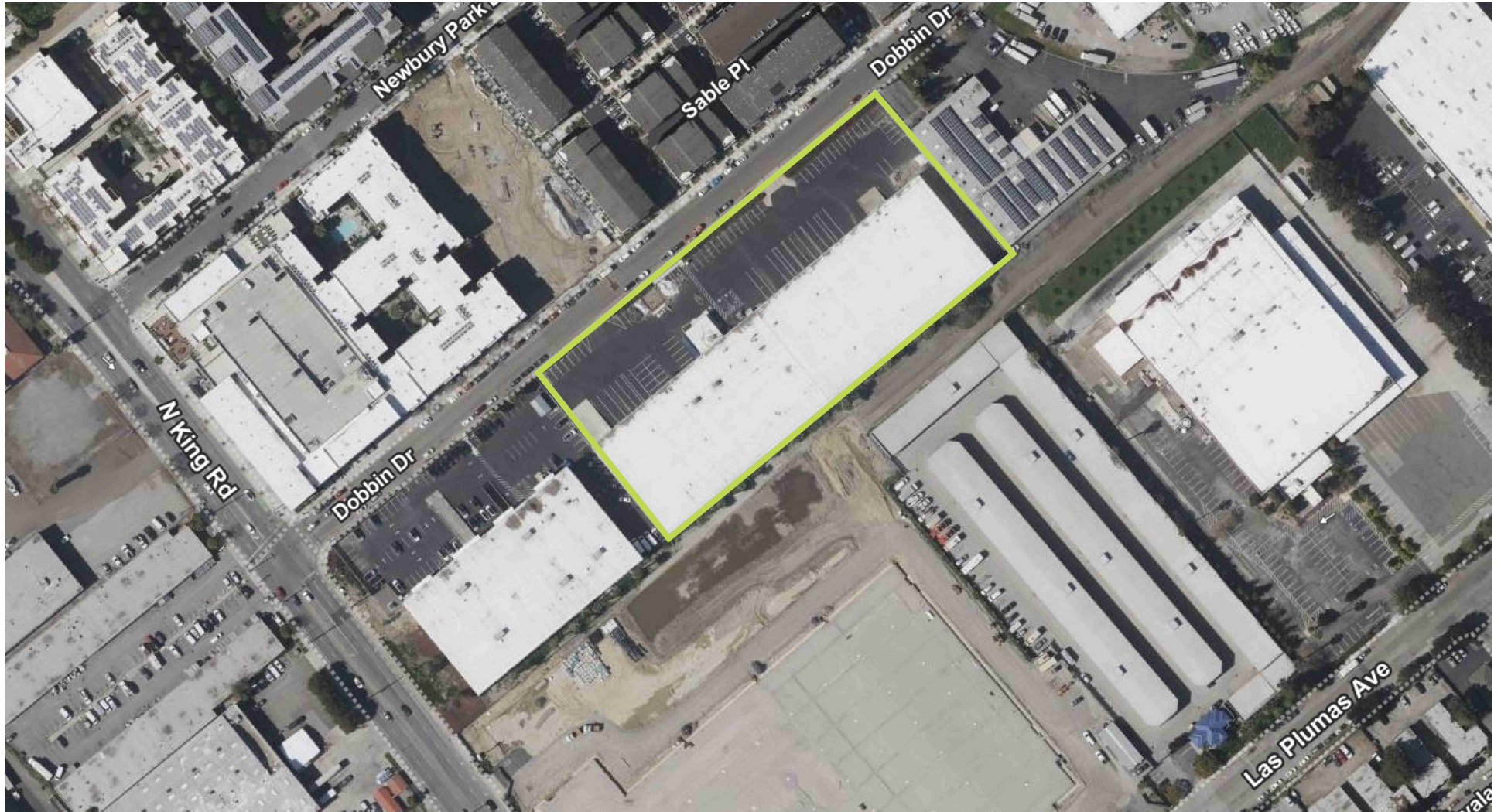
SITE PLAN



1800-1810 DOBBIN DRIVE
SAN JOSE, CA 95133

FOR LEASE

AERIAL VIEW



© 2024 CBRE, Inc. All rights reserved. This information has been obtained from sources believed reliable but has not been verified for accuracy or completeness. CBRE, Inc. makes no guarantee, representation or warranty and accepts no responsibility or liability as to the accuracy, completeness, or reliability of the information contained herein. You should conduct a careful, independent investigation of the property and verify all information. Any reliance on this information is solely at your own risk. CBRE and the CBRE logo are service marks of CBRE, Inc. All other marks displayed on this document are the property of their respective owners, and the use of such marks does not imply any affiliation with or endorsement of CBRE. Photos herein are the property of their respective owners. Use of these images without the express written consent of the owner is prohibited.