



THREE GORGEOUS OFFICE SUITES AVAILABLE FOR ON MAITLAND AVENUE



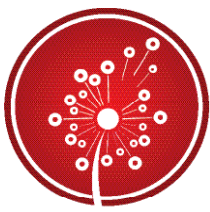
**1555 N. MAITLAND AVE.
MAITLAND, FL 32751**

**UP TO 875 RSF±
NEGOTIABLE**

PROPERTY DETAILS

- Three move-in ready beautiful office suites within building available for lease
- Great tenants within office building
- Located minutes from the I-4 Maitland Interchange
- Includes use of shared conference room, well appointed kitchen, sparkling restrooms and comfortable waiting area
- Reduced rate if two offices are leased together
- The monthly rate includes utilities

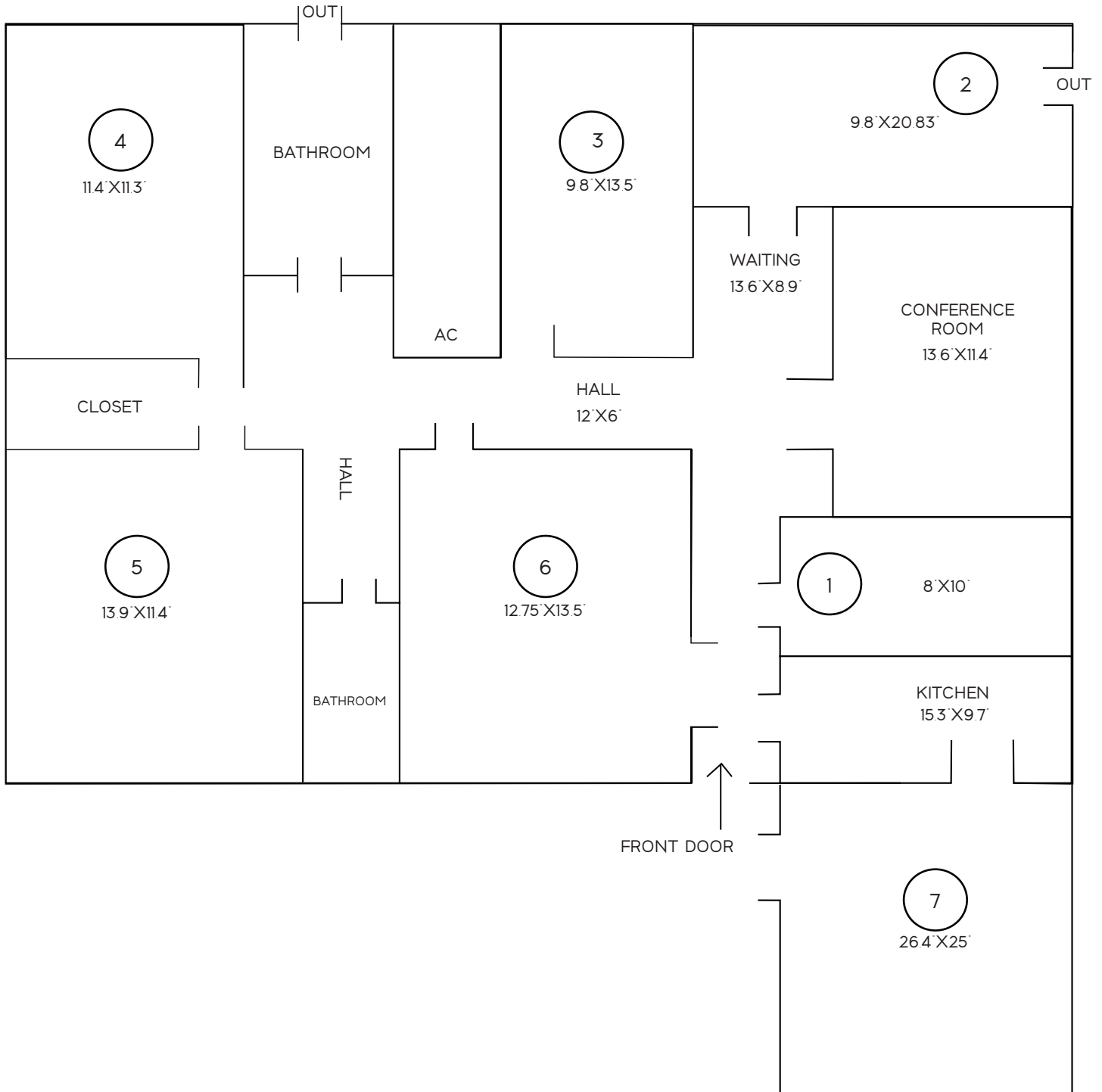
- + Office #4 at \$475/Mo
- + Office #5 at \$525/Mo
- + Office #6 at \$550/Mo
- + Free first month rent available depending on term

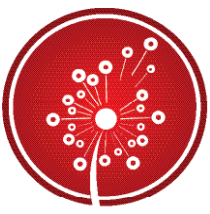


1555 N. MAITLAND AVE.
MAITLAND, FL 32751

BEYOND
COMMERCIAL

FLOOR PLAN

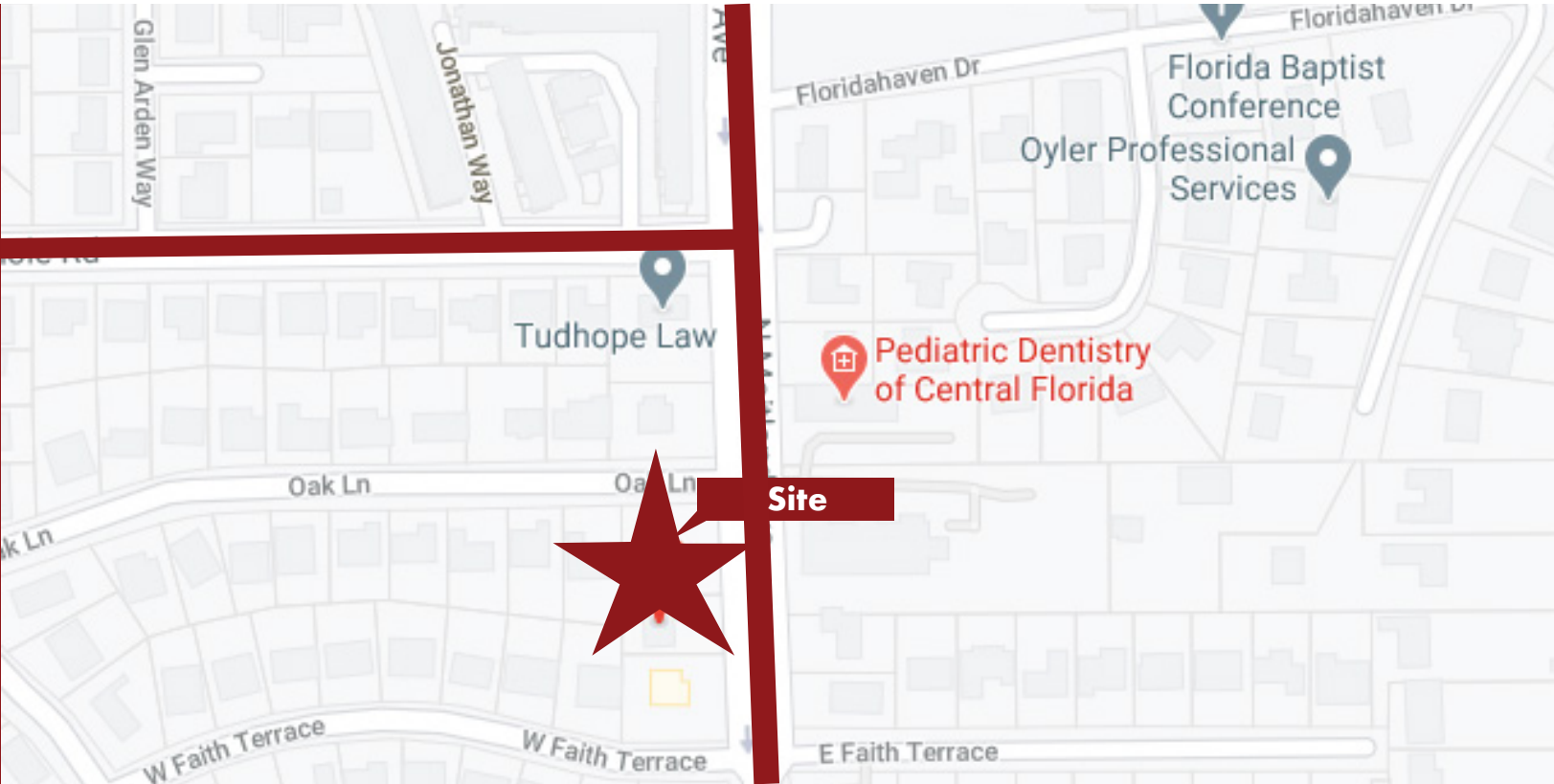




BEYOND
COMMERCIAL

1555 N. MAITLAND AVE.
MAITLAND, FL 32751

MAP VIEW



AMY CALANDRINO, CCIM
Founding Principal
Cell: 407-492-0433
amy@beyondcommercial.com

SANDI HARRISON
Commercial REALTOR®
Cell: 850-687-0207
sandi@beyondcommercial.com

No warranty or representation, express or implied, is made as to the accuracy of the information contained herein, and same is submitted subject to errors, omissions, change of price, rental or other conditions, withdrawal without notice, and to any other specific listing conditions, imposed by our principals. Beyond Commercial, LLC d/b/a Beyond Commercial is a Licensed Real Estate Broker.

www.beyondcommercial.com + (407) 641-2221 + 175 Lookout Pl, Ste, 200 + Maitland, FL 32751