

DEVELOPMENT LAND AVAILABLE FOR BUILD TO SUIT OR GROUND LEASE

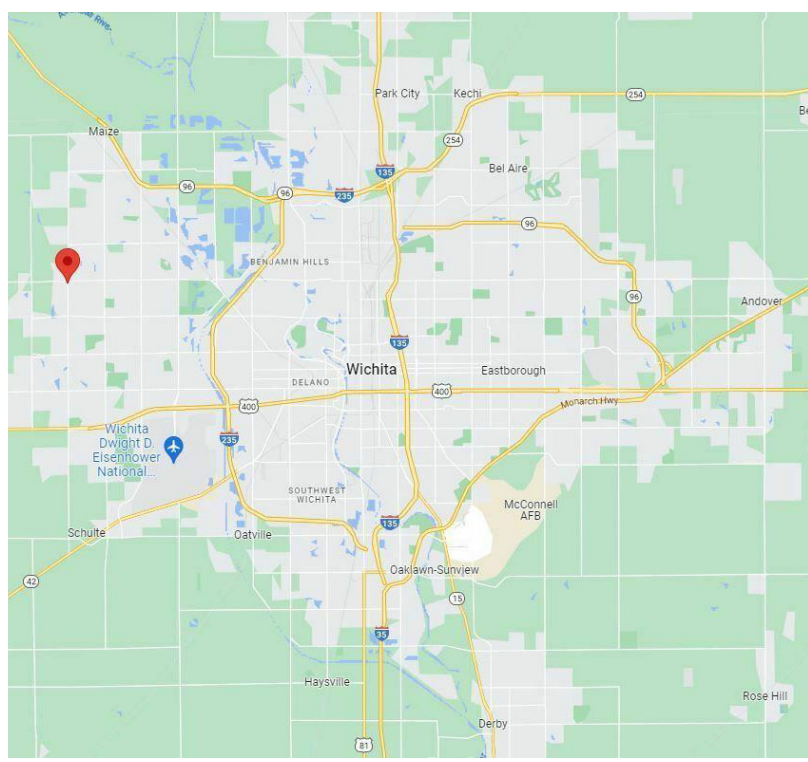


PROPERTY DESCRIPTION

- Sale Price: \$392,909.00 (\$11.00 per sq. ft.)
- Lot Size: 0.82 Acres
- Zoning: Limited Commercial
- Access: One curb cut allowed on 21st St., and one curb cut allowed on 119th St.

LOCATION DESCRIPTION

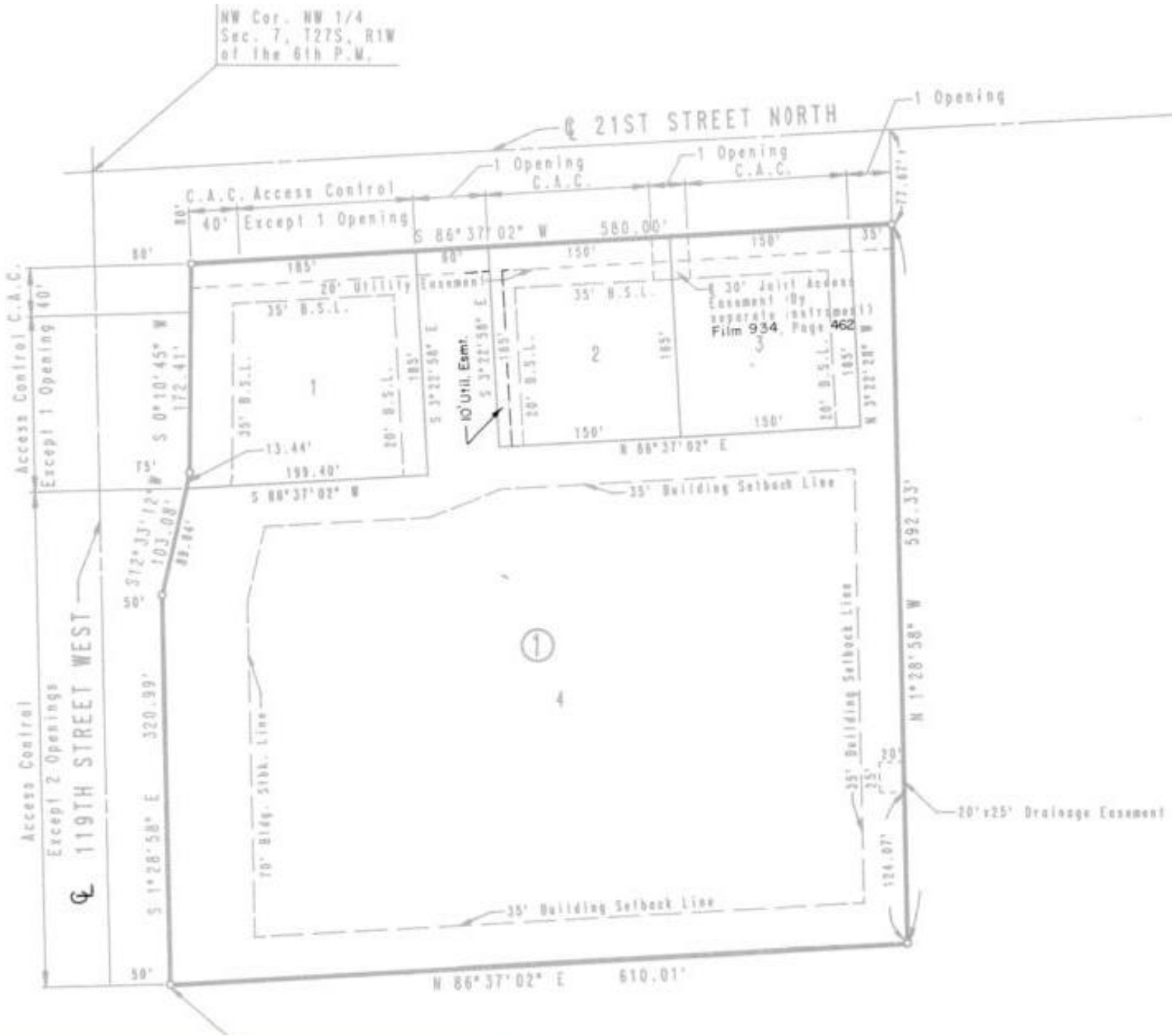
- Location: 21st & 119th
- 1 mile west of Maize Road corridor which hosts a large selection of national retail and restaurant tenants
- Residentially dense area
- Nearby School Districts: Maize USD 266, Goddard USD 265, Renwick USD 267 and Wichita USD 259
- Nearby Retailers: Walmart, Dillons, Best Buy, Marshall's, Old Navy, Ulta, Chick-fil-a, Lowe's, HomeGoods, Sam's Club and many more!
- Available for Build to Suit or Ground Lease.



Don Piros, CCIM
Sales Associate
O: 316.990.0606
dpiros@landmarkrealestate.net

Brad Saville, CCIM
Sales Associate
O: 316.262.2442
bsaville@landmarkrealestate.net

SOUTHEAST CORNER PLAT



Don Piros, CCIM
Sales Associate
O: 316.990.0606
dpiros@landmarkrealestate.net

Brad Saville, CCIM
Sales Associate
O: 316.262.2442
bsaville@landmarkrealestate.net