

# FIRST REDWOOD II LOGISTICS CENTER

11253 Redwood Ave | Fontana, CA



71,905 SQUARE FEET | **FOR LEASE**

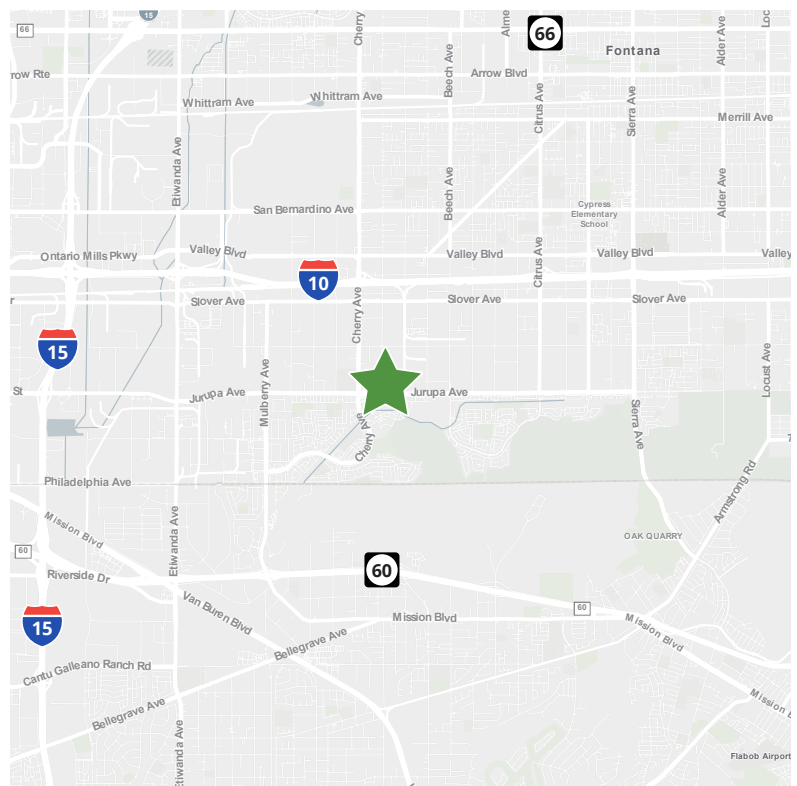
First Redwood II Logistics Center is a Class A building in the Fontana submarket of the Inland Empire. The property is located less than fifteen minutes from Ontario International Airport and easily is accessible via the I-10, I-15 and 60 freeways.

## PROPERTY SPECIFICATIONS

Available Space:	71,905 SF
Land Area:	4.05 acres
Office:	5,534 SF 2-Story
Ceiling Height:	32' Clear
Dock High Doors:	11
Ground Level Doors:	1
Trailer Parking:	15 stalls
Car Parking:	185' truck court
	54 spaces
Electrical:	1,600 amps
	(4,000 amp pull)
Sprinkler System:	ESFR

## PROPERTY HIGHLIGHTS

- Easy access to I-10, I-15, 60 freeways
- Owned and managed by First Industrial Realty Trust, Inc.





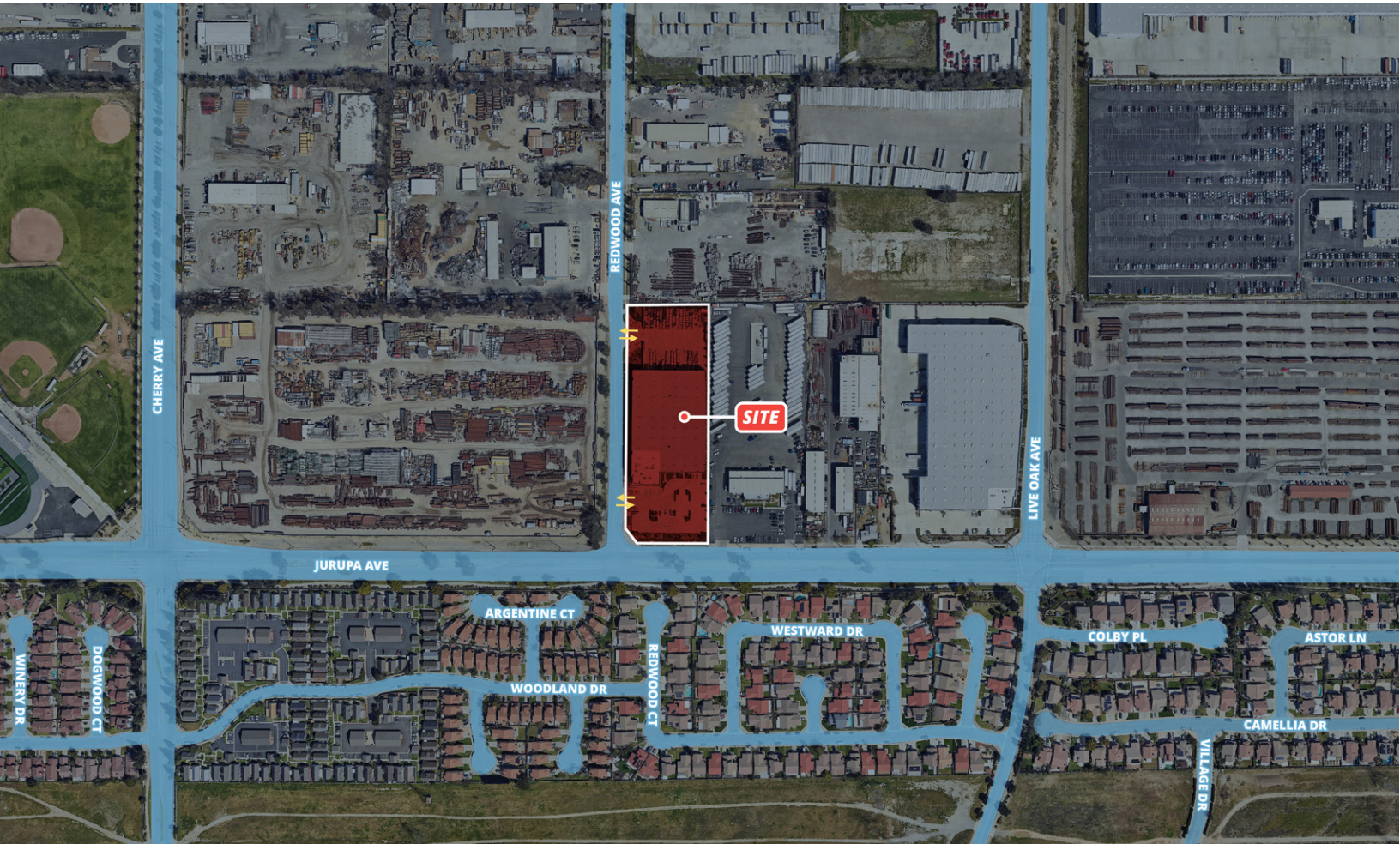




# FIRST REDWOOD II LOGISTICS CENTER

71,905 SQUARE FEET | FOR LEASE

## AERIAL VIEWS



898 N. Pacific Coast Highway, Suite 175

El Segundo, CA 90245

310.414.5400

[www.firstindustrial.com](http://www.firstindustrial.com)

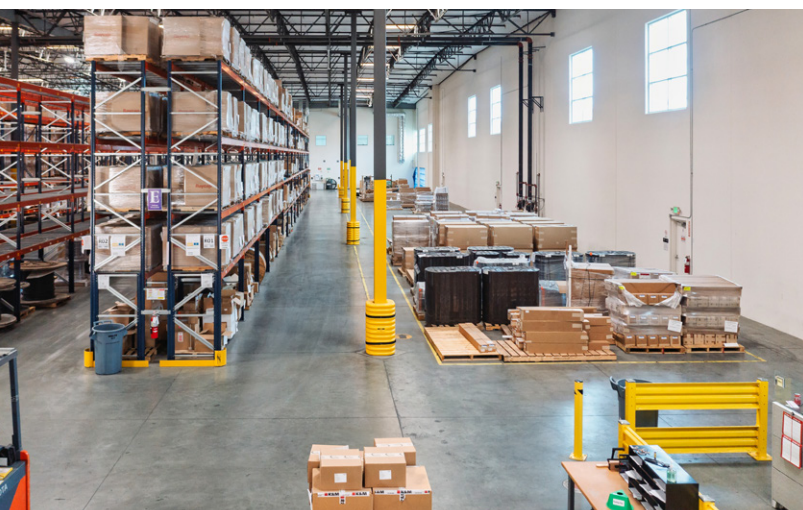
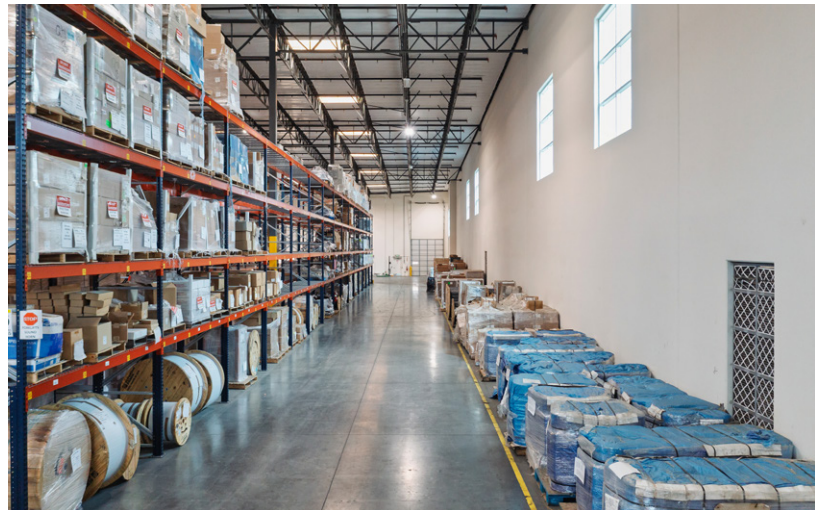
All information furnished regarding the property for sale, rental or financing is obtained from sources deemed reliable. No representation is made to the accuracy thereof and is submitted subject to errors, omissions, change of price rental or other conditions, prior sale, lease, or financing, or withdrawal without notice. First Industrial Realty Trust, Inc. represents the Seller in this transaction and as such owes all duties and obligations thereto.



# FIRST REDWOOD II LOGISTICS CENTER

71,905 SQUARE FEET | FOR LEASE

## INTERIOR PHOTOGRAPHS



898 N. Pacific Coast Highway, Suite 175 El Segundo, CA 90245 310.414.5400

[www.firstindustrial.com](http://www.firstindustrial.com)

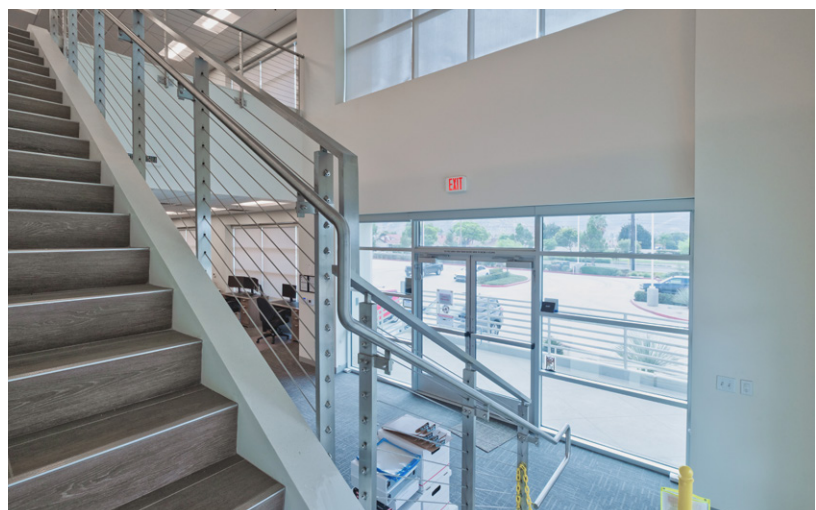
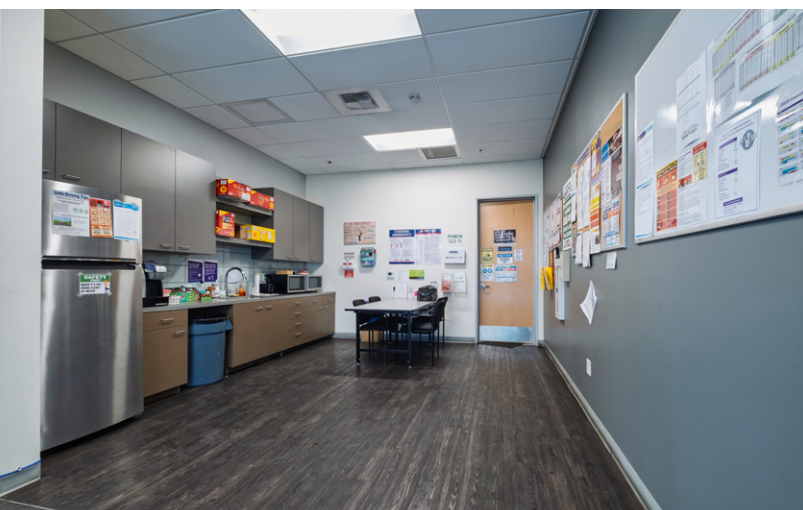
All information furnished regarding the property for sale, rental or financing is obtained from sources deemed reliable. No representation is made to the accuracy thereof and is submitted subject to errors, omissions, change of price rental or other conditions, prior sale, lease, or financing, or withdrawal without notice. First Industrial Realty Trust, Inc. represents the Seller in this transaction and as such owes all duties and obligations thereto.



# FIRST REDWOOD II LOGISTICS CENTER

71,905 SQUARE FEET | FOR LEASE

## INTERIOR OFFICE PHOTOGRAPHS



898 N. Pacific Coast Highway, Suite 175    El Segundo, CA 90245    310.414.5400

[www.firstindustrial.com](http://www.firstindustrial.com)

All information furnished regarding the property for sale, rental or financing is obtained from sources deemed reliable. No representation is made to the accuracy thereof and is submitted subject to errors, omissions, change of price rental or other conditions, prior sale, lease, or financing, or withdrawal without notice. First Industrial Realty Trust, Inc. represents the Seller in this transaction and as such owes all duties and obligations thereto.

# FIRST REDWOOD II LOGISTICS CENTER

71,905 SQUARE FEET | FOR LEASE

## SITE PLAN



## BROKER CONTACT

### Richard Schwartz

EVP & Sr. Managing Principal  
714.943.1609  
richard.schwartz@srsre.com  
CA License No. 01712680

### Joey Reaume

EVP & Principal  
626.825.2173  
joey.reaume@srsre.com  
CA License No. 01918579

### Nick Moscicki

Vice President  
818.606.1632  
nick.moscicki@srsre.com  
CA License No. 02078491

## OWNER CONTACT

### Ryan McClean

Executive Director  
310.617.3384  
rmcclean@firt.com

### James Petrilli

Senior Investment Officer  
949.274.1806  
jpetrilli@firt.com



898 N. Pacific Coast Highway, Suite 175 El Segundo, CA 90245 310.414.5400

[www.firstindustrial.com](http://www.firstindustrial.com)

All information furnished regarding the property for sale, rental or financing is obtained from sources deemed reliable. No representation is made to the accuracy thereof and is submitted subject to errors, omissions, change of price rental or other conditions, prior sale, lease, or financing, or withdrawal without notice. First Industrial Realty Trust, Inc. represents the Seller in this transaction and as such owes all duties and obligations thereto.