

# SOUTH END OFFICE FOR LEASE

±6,351 SF FREESTANDING BUILDING



**2410 DUNAVANT ST, CHARLOTTE, NC 28203**

**FRANK MCCLENEGHAN**

704.375.1191

[fmccleughan@piedmontproperties.com](mailto:fmccleughan@piedmontproperties.com)

# PROPERTY HIGHLIGHTS

2410 DUNAVANT ST | CHARLOTTE, NC 28203

Right in the heart of South End, this  $\pm 6,351$  SF freestanding office building features lots of natural light and a rooftop terrace. The 2-story property has great access to the Rail Trail providing excellent walkability to restaurants, breweries, fitness studios, and retail stores. There is plentiful parking with 26 striped parking spaces.

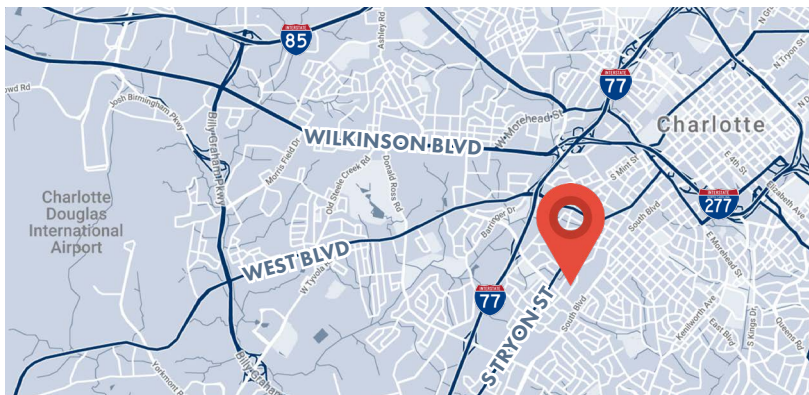
## Floor 1:

- $\pm 4,979$  SF
- Large contemporary reception area
- 2 conference rooms
- $\pm 14$  private offices
- Bullpen area with natural light
- Kitchenette with dishwasher, refrigerator, built-in table, and banquette

## Floor 2:

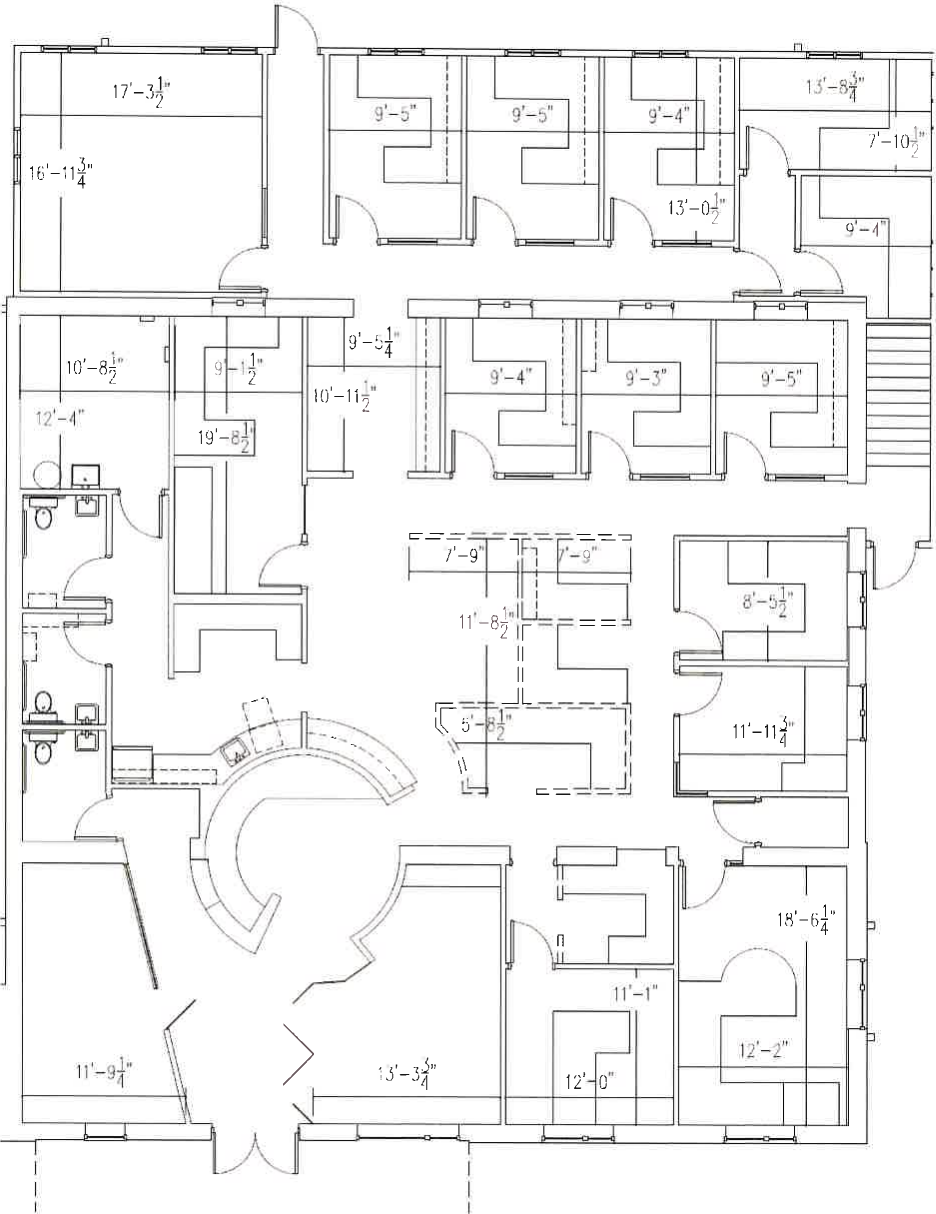
- 6 private offices, each with a window
- Access to outdoor rooftop terrace
- Direct access to parking lot and can be locked-off from the 1st floor

**FOR LEASE: \$37 PSF NNN**



# FIRST FLOOR

2410 DUNAVANT ST | CHARLOTTE, NC 28203

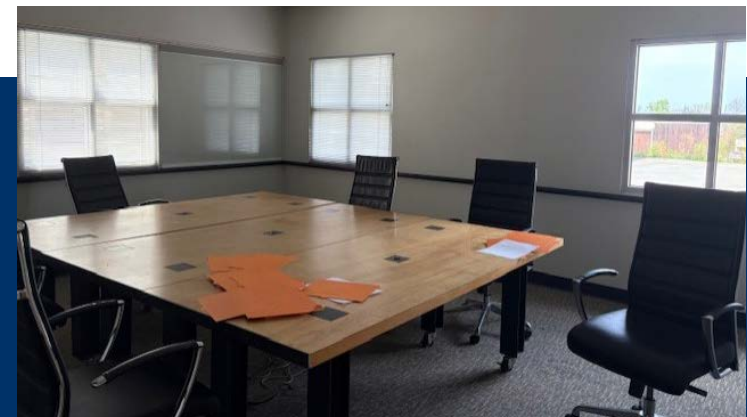
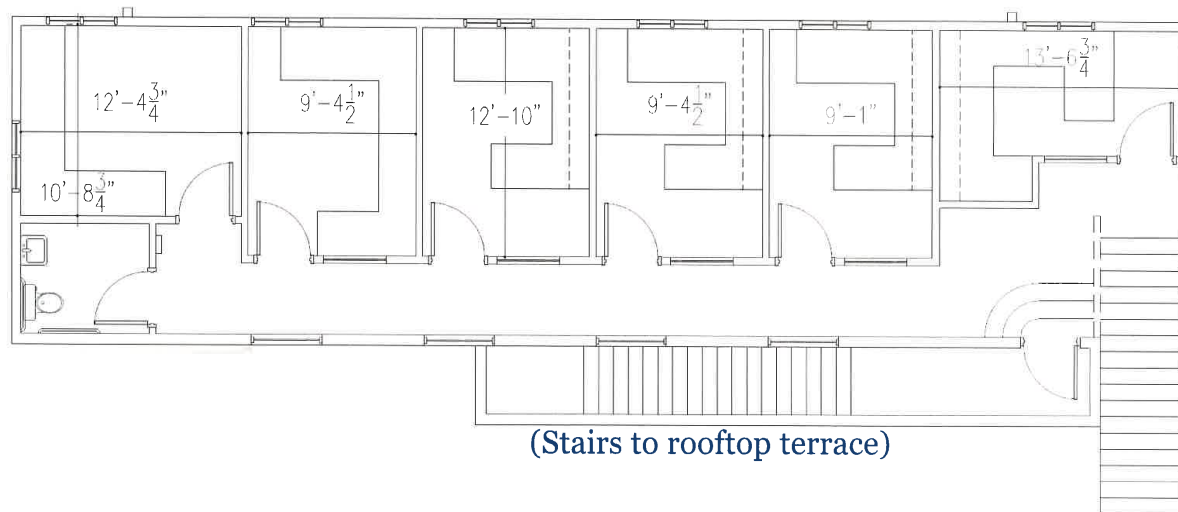
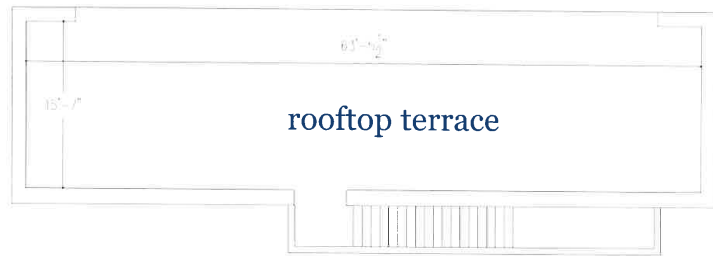


- ±4,979 SF
- Large contemporary reception area
- 2 conference rooms
- ±14 private offices
- Bullpen area with natural light
- Kitchenette with dishwasher, refrigerator, built-in table, and banquette



# SECOND FLOOR

2410 DUNAVANT ST | CHARLOTTE, NC 28203



- 6 private offices, each with a window
- Access to outdoor rooftop terrace
- Direct access to parking lot and can be locked-off from the 1st floor

# CONTACT

2410 DUNAVANT ST | CHARLOTTE, NC 28203



26 STRIPED PARKING SPACES

**FRANK MCCLENEGHAN**

704.375.1191

[fmccleghan@piedmontproperties.com](mailto:fmccleghan@piedmontproperties.com)