

2243 S Ridgeley Drive, Los Angeles, CA 90016

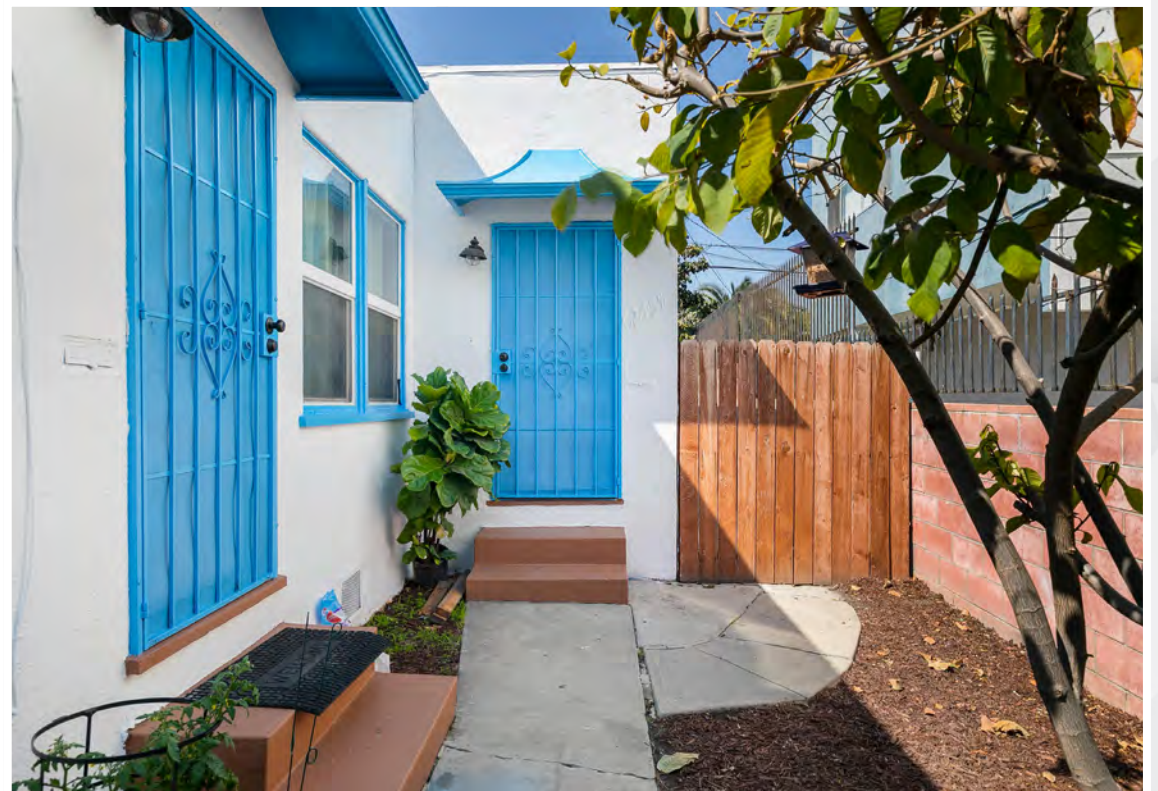


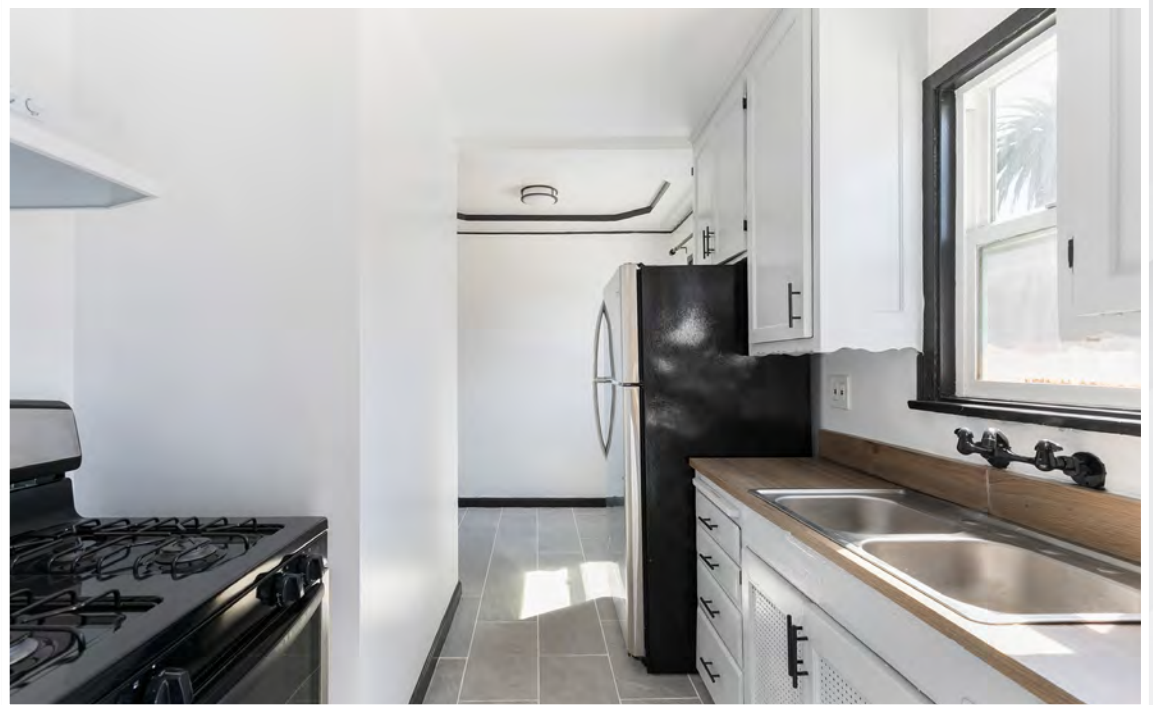
**MULTIFAMILY DEVELOPMENT
OPPORTUNITY WITH AS-IS INCOME**

PROPERTY DETAILS

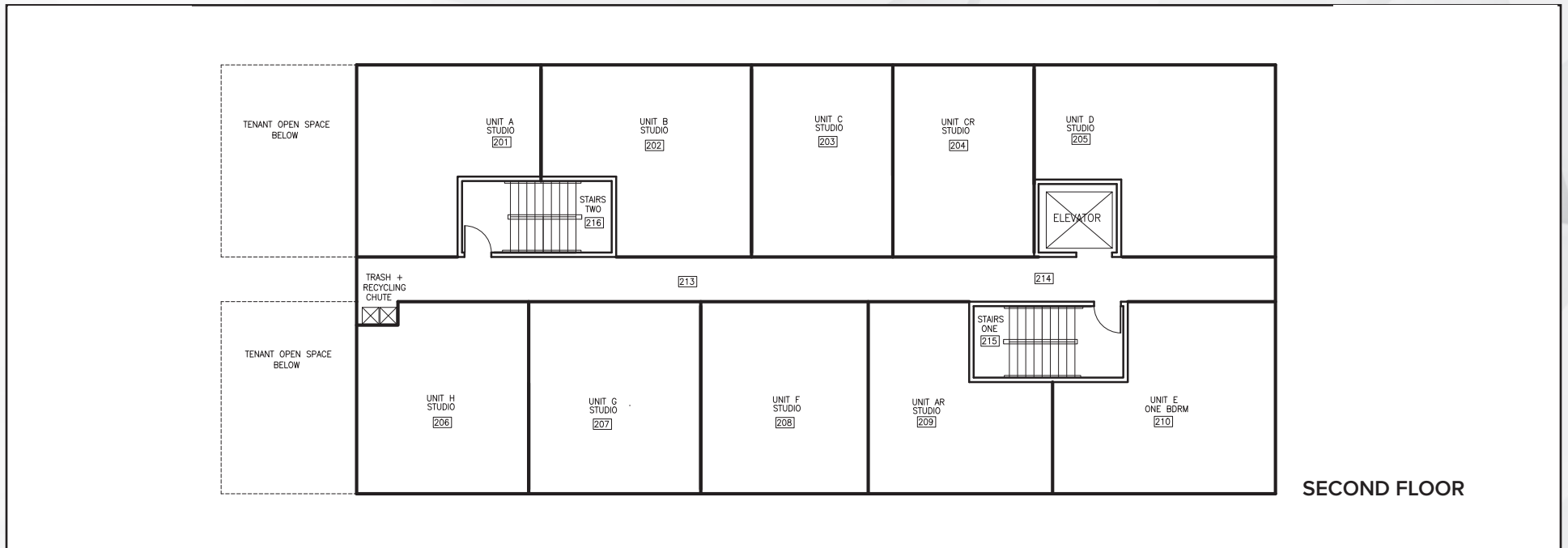
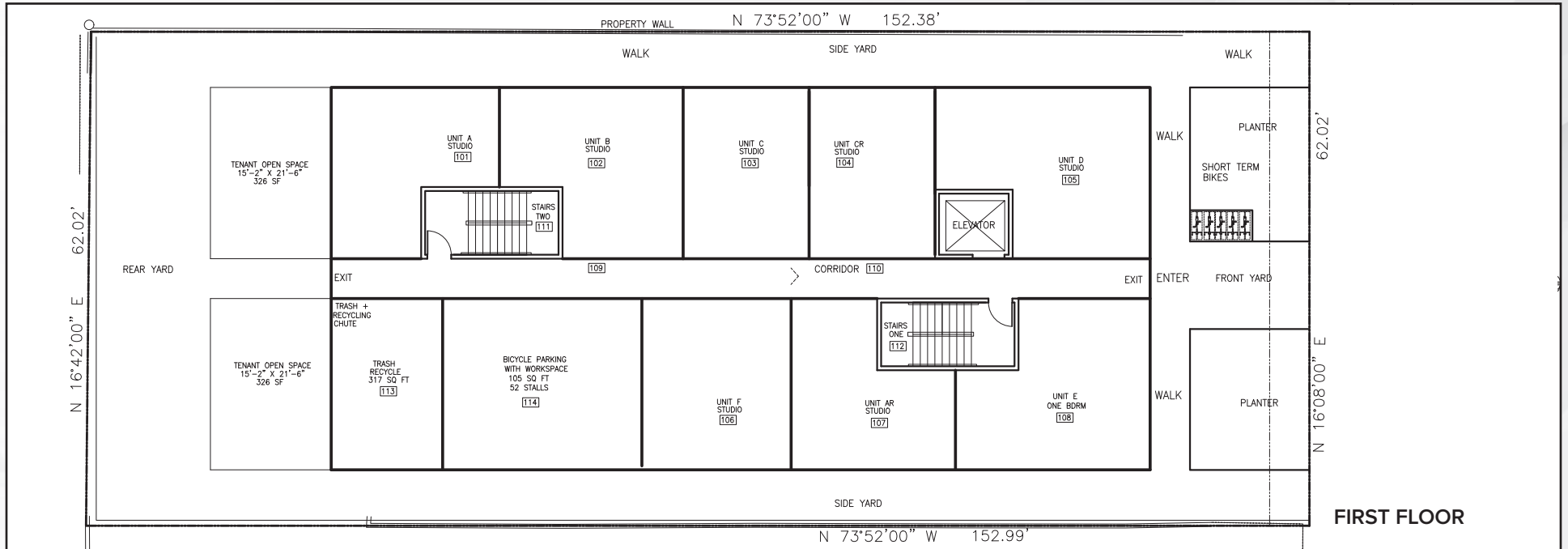


PREMISES	5 Units - Four 1 + 1 units and one studio Building: ± 2,661 SF Land: ± 9,466 SF
PRICE	\$1,900,000
ZONING	LARD1.5
APN	5063-024-002
YEAR BUILT	1939
FEATURES	<ul style="list-style-type: none">- Anywhere from 22 to 55 unit development potential - buyer to verify- Preliminary development plans available on request- Covered land play development site- Existing income available - contact broker- Four (4) single car garages

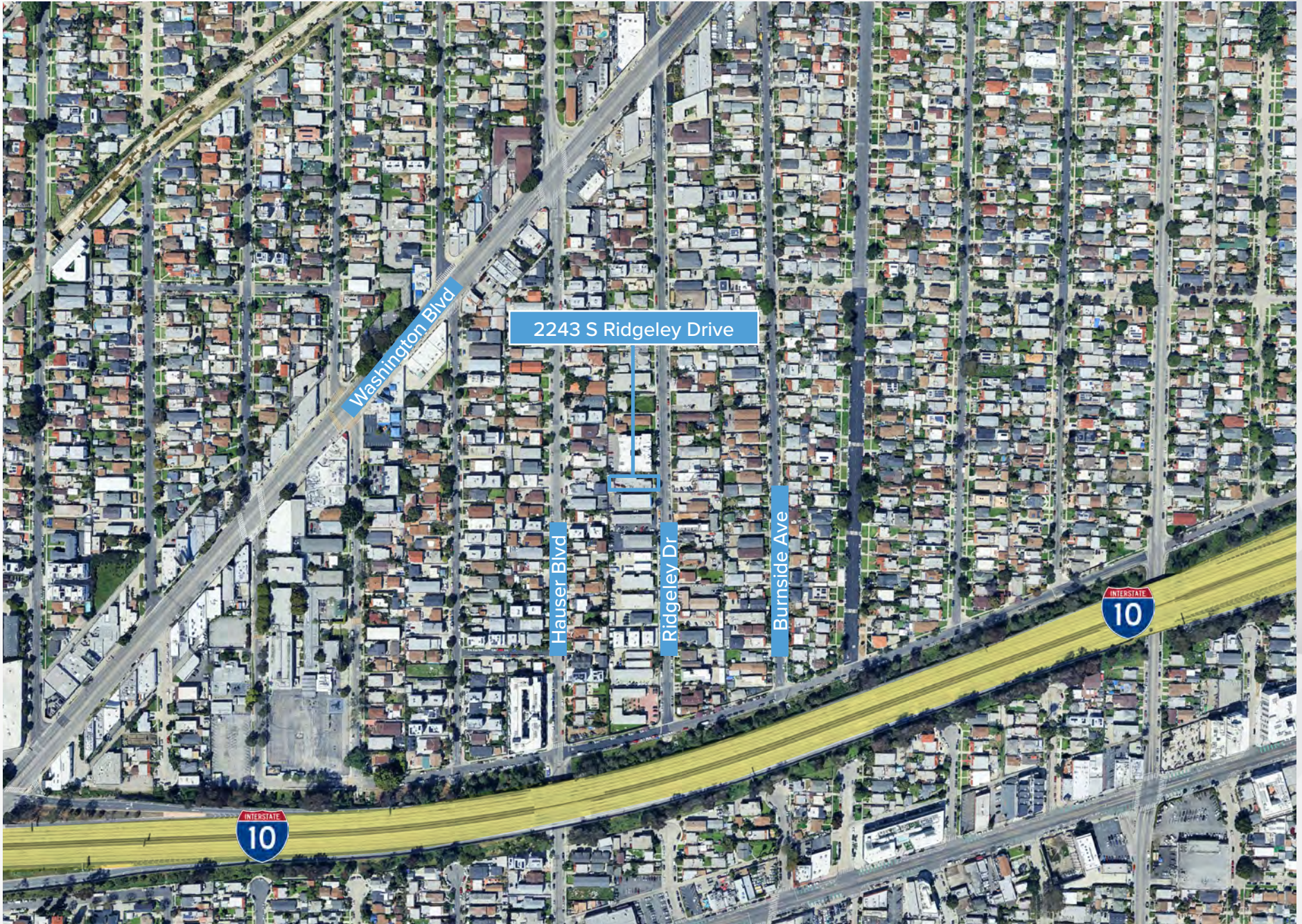




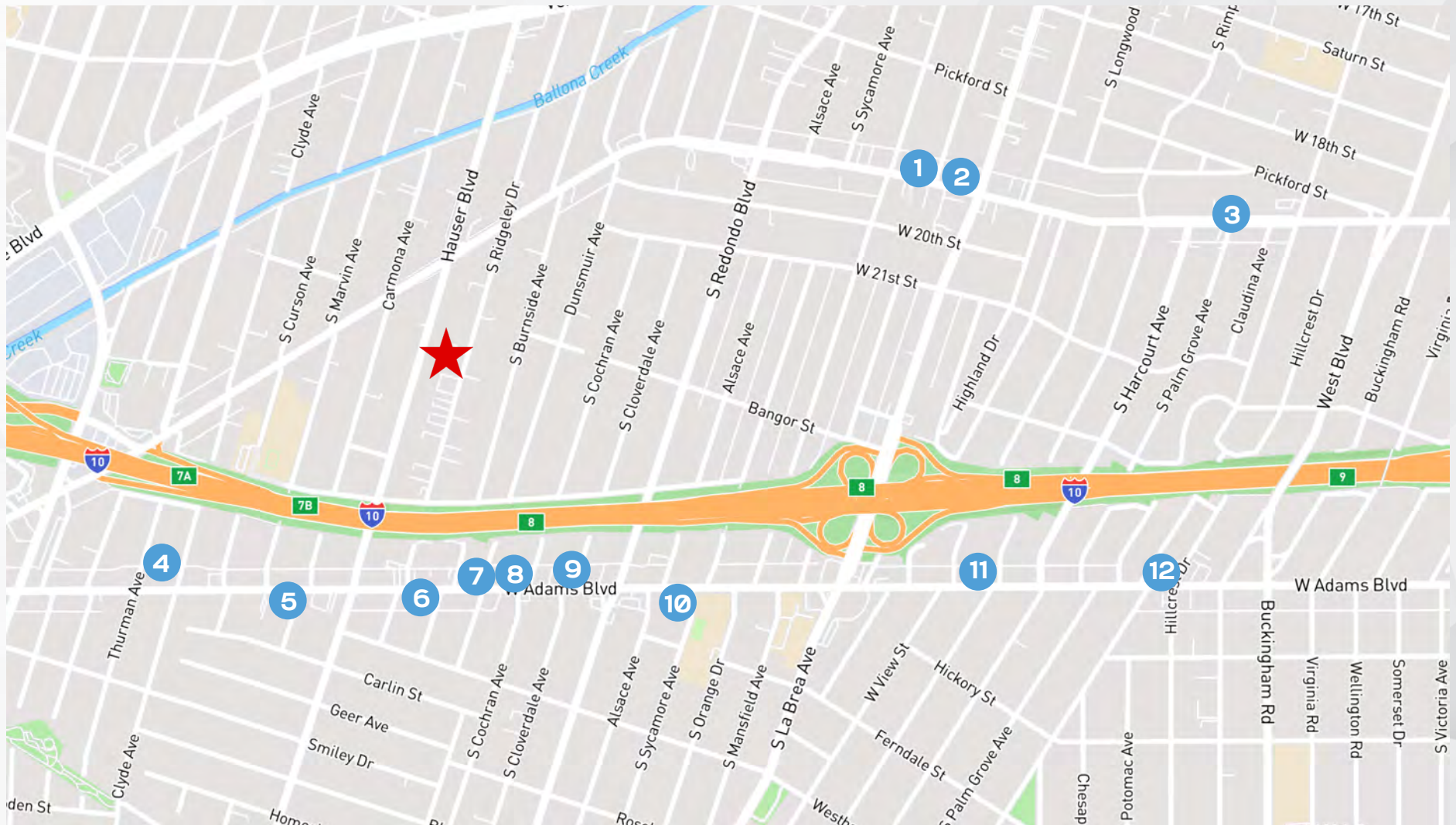
DEVELOPMENT FLOOR PLANS



AERIAL MAP



NEARBY AMENITIES



1 JURASSIC MAGIC

4 COMPARTES CHOCOLATES

7 ALTA ADAMS

10 CHULITA

2 ROSCOE'S CHICKEN & WAFFLES

5 FARMHOUSE KITCHEN THAI CUISINE LA

8 TARTINE

11 CENTO

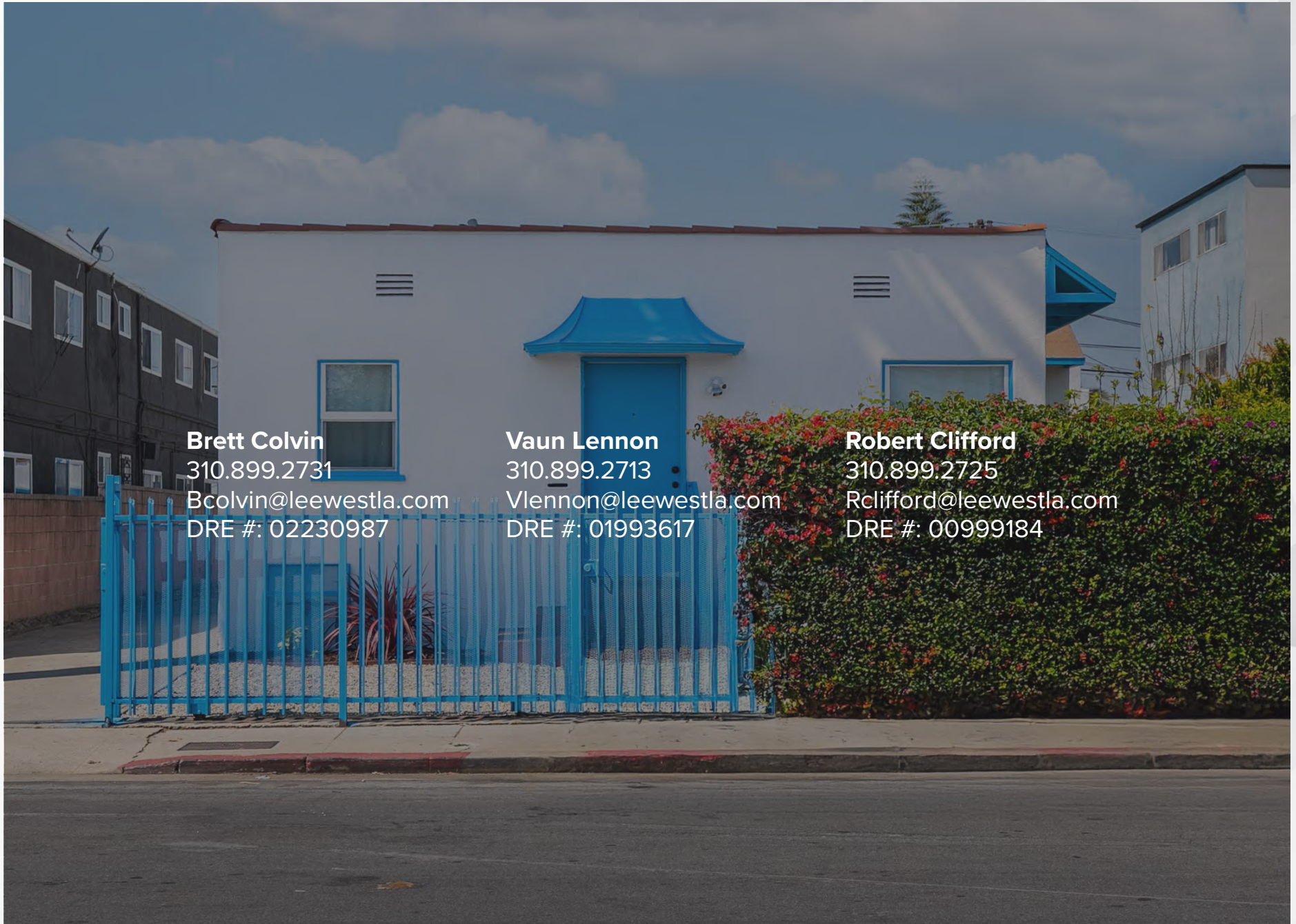
3 PALM GROVE SOCIAL

6 VICKY'S ALL DAY

9 MIAN WEST ADAMS

12 HONEY BEE'S HOUSE OF BREAKFAST

CONTACTS



Brett Colvin
310.899.2731
Bcolvin@leewestla.com
DRE #: 02230987

Vaun Lennon
310.899.2713
Vlennon@leewestla.com
DRE #: 01993617

Robert Clifford
310.899.2725
Rclifford@leewestla.com
DRE #: 00999184