

**MAIN ROAD INDUSTRIAL FOR LEASE  
20,190 SF**



# PILOT

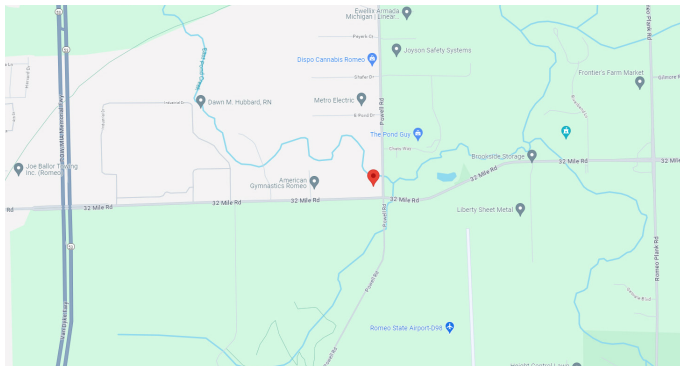
PROPERTY GROUP

**15065 32 MILE RD., BRUCE TOWNSHIP, MI 48065**

**PROPERTY OVERVIEW:**

Main Road Industrial building for lease, located at 32 Mile and Powell in Romeo. Building has two story front offices/showroom area and back area shop/warehouse. Perfect multi-use building. Lease Rate includes taxes and insurance. Tenant pays for snow removal/salting and utilities. Contact broker for more details.

- Property Type:* ..... Free Standing Industrial
- Cross Streets:* ..... Just East of M-53
- Total Square Footage:* ..... 20,190
- Shop Square Footage:* ..... 16,800
- Office Square Footage:* ..... 3,390 (2 Stories)
- Year Built:* ..... 2008
- Zoning:* ..... I-1
- Heavy Power:* ..... 2,000 AMP, 240 V, 3-Phase
- High Ceiling Height:* ..... 22'
- Lighting:* ..... T-5
- Bay Sizes:* ..... See Plan
- Rear Loading Docks:* ..... (2) 10'W x 10'H
- Grade Level Doors:* ..... (1) 16'W x 14'H
- Parking Spaces:* ..... 30 Spaces
- Property Sub-Types:* ..... Warehousing, Distribution, Manufacturing, Commercial, Mixed Use
- Lease Rate:* ..... \$15,000/Month
- Lease Type:* ..... Modified Gross



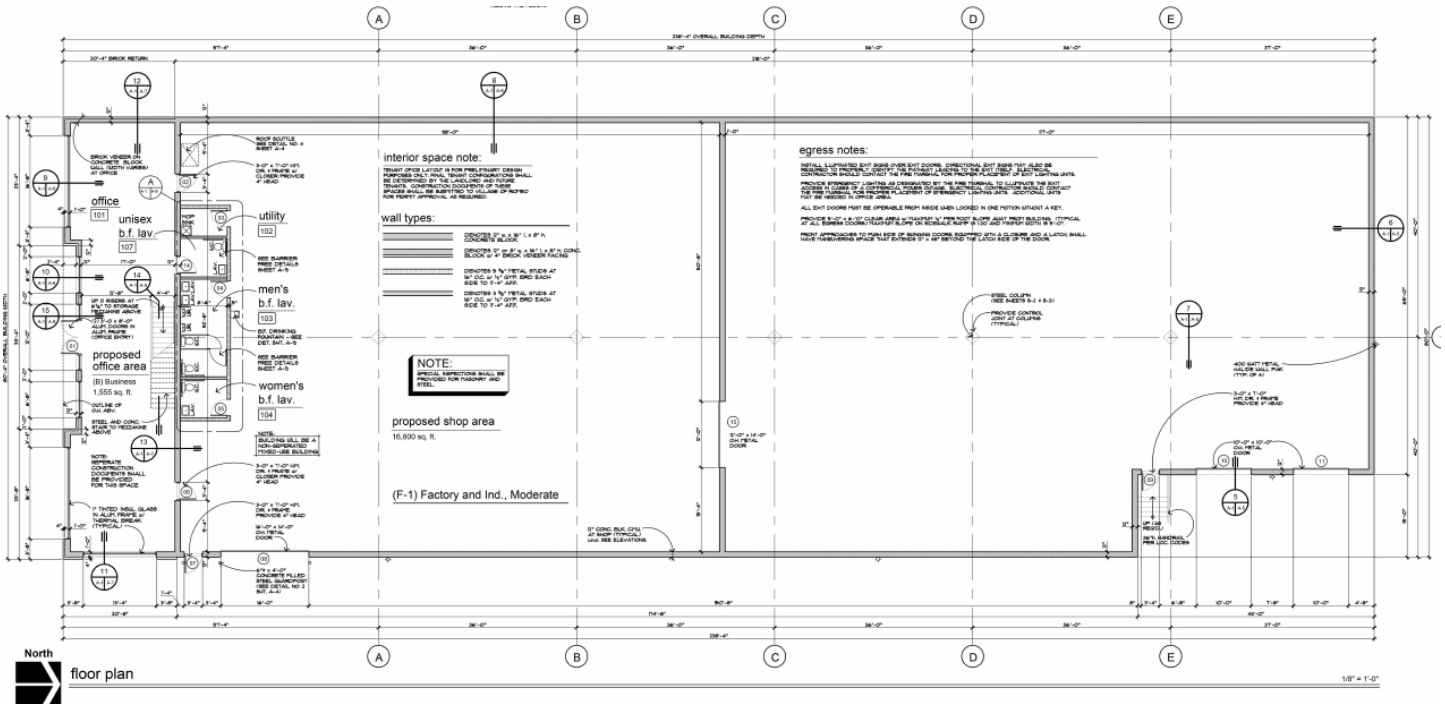
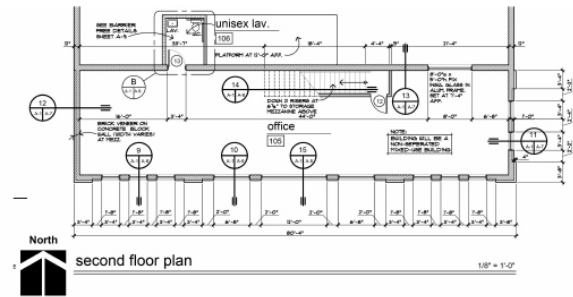
**AGENT CONTACT INFO**

**EVAN JUROVCIK** O: 586.254.0900 x108 • C: 586.360.0911 • ejurovcik@gmail.com

*Matching the right people to the right place.*

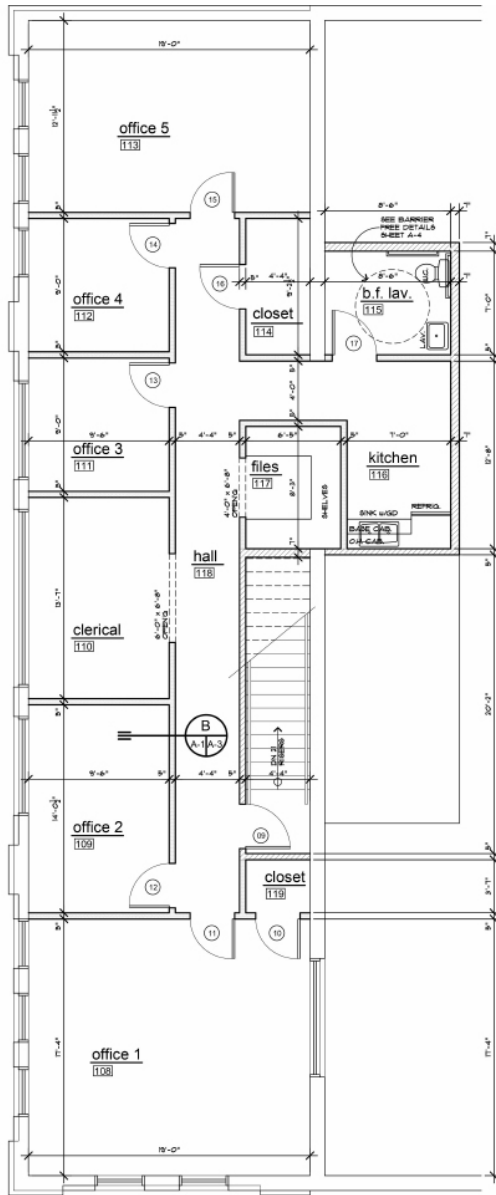
44400 Van Dyke, Suite 101, Sterling Heights, MI 48314 • 1530 Pine Grove, Suite 4, Port Huron, MI 48060  
586.254.0900 • www.pilotpg.com

## FLOOR PLAN

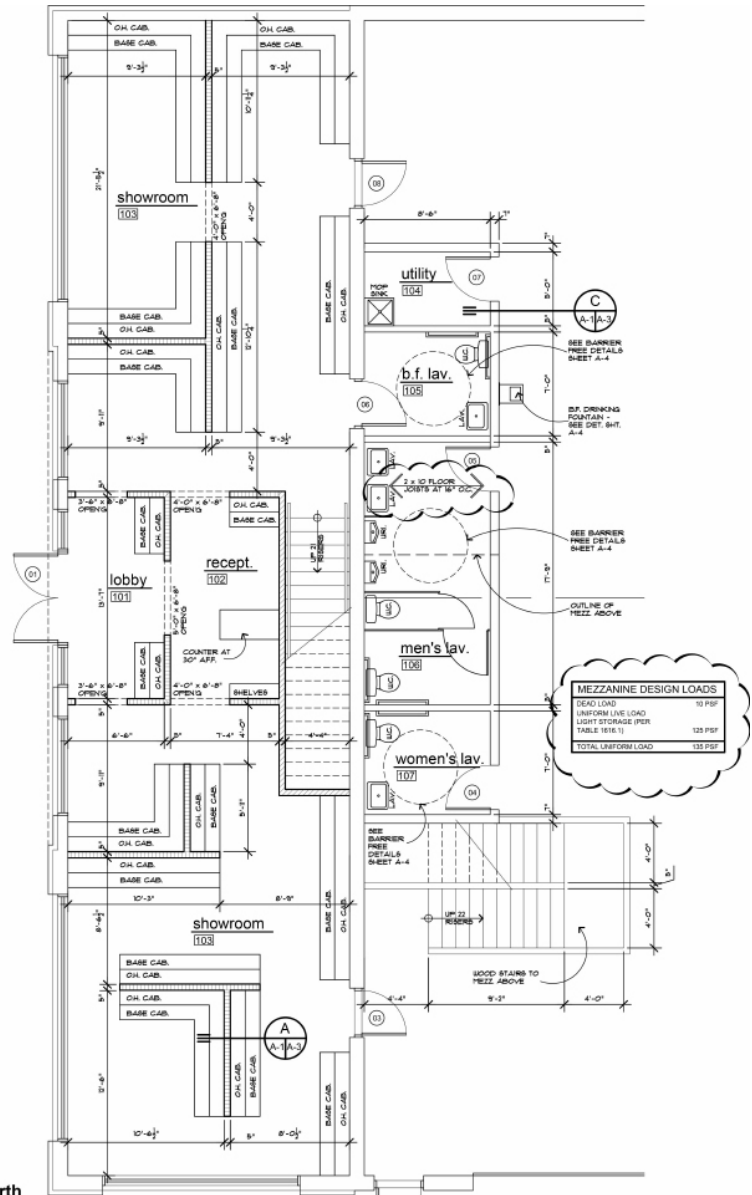


Matching the right people to the right place.

## OFFICE FLOOR PLAN



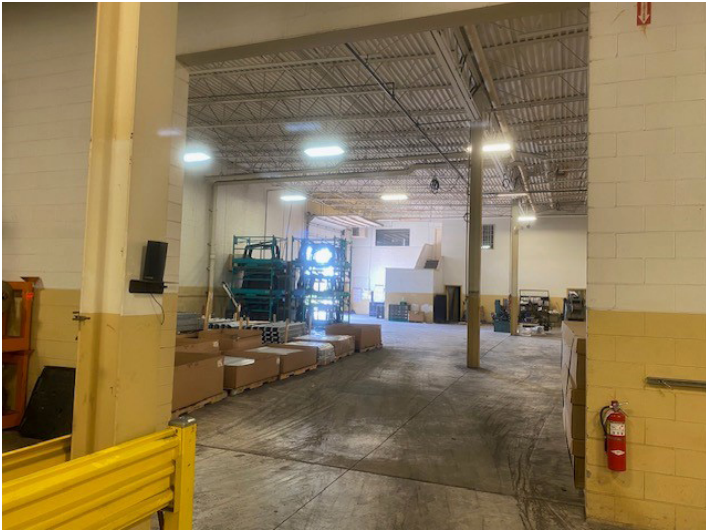
mezzanine plan



main level floor plan

*Matching the right people to the right place.*

## ADDITIONAL PHOTOS



*Matching the right people to the right place.*

44400 Van Dyke, Suite 101, Sterling Heights, MI 48314 • 1530 Pine Grove, Suite 4, Port Huron, MI 48060  
586.254.0900 • [www.pilotpg.com](http://www.pilotpg.com)