



**Keegan & Coppin**  
COMPANY, INC.

FOR LEASE

1375-1401 CORPORATE CENTER PKWY  
SANTA ROSA, CA

**NORTHPOINT CORPORATE CENTER  
OFFICE SPACE AVAILABLE**



Go beyond broker.

PRESENTED BY:

**SHAWN JOHNSON, MANAGING PARTNER / SIOR**  
LIC # 00835502 (707) 528-1400, EXT. 238  
[SJOHNSON@KEEGANCOPPIN.COM](mailto:SJOHNSON@KEEGANCOPPIN.COM)



# PROPERTY INFORMATION



1375 - 1401  
CORPORATE CENTER PKWY  
SANTA ROSA, CA

## OFFICE SPACE FOR LEASE



### DETAILS

#### OFFICE SPACE

Suite 1375-A: 4,245+/- sf

Suite 1378-B: 2,055 +/- sf

Suite 1401: 4,922+/- sf

#### PARKING

On-Site

#### DESCRIPTION OF PREMISES

Available power to all office suites.

Building consists of men's and women's common bathrooms, showers and lockers. It also has a break room kitchen area for all employees to use. Outdoor patio area for picnics and company functions.

The building is surrounded by matured redwood trees and manicured landscaping throughout the property and thoroughly visible from floor to ceiling perimeter windows. Entire building is sprinklered. Common areas are maintained by a professional cleaning company. Come join tenants such as 3G Green Garden Group and At Home Nursing.

### HIGHLIGHTS

- Located in the Northpoint Corporate Center
- Multi-Tenant, Office, Flex R&D Building
- Common Bathrooms w/ Showers & Lockers
- Abundant On-Site Parking
- Open Floor Plan

#### DESCRIPTION OF LOCATION

Campus setting with excellent location and easily accessible from Highway 12 and Highway 101. Just minutes from downtown Santa Rosa. Close proximity to public transportation, residential housing, retail stores, public schools, and various other amenities. Northpoint Corporate Center is home to many prominent firms such as Amy's Kitchen, JDSU, Sonic.net, Kaiser Permanente ( MOB) and many more private and public firms.

### LEASE TERMS

#### RATE

\$1.75 psf

#### TERMS

All office suites are modified full service.

Lessee to pay janitorial.

#### PRESENTED BY:

**SHAWN JOHNSON, MANAGING PARTNER / SIOR**  
**KEEGAN & COPPIN CO., INC.**  
LIC # 00835502 (707) 528-1400, EXT. 238  
SJOHNSON@KEEGANCOPPIN.COM

Keegan & Coppin Company, Inc.

The above information, while not guaranteed, has been secured from sources we believe to be reliable. Submitted subject to error, change or withdrawal. An interested party should verify the status of the property and the information herein.

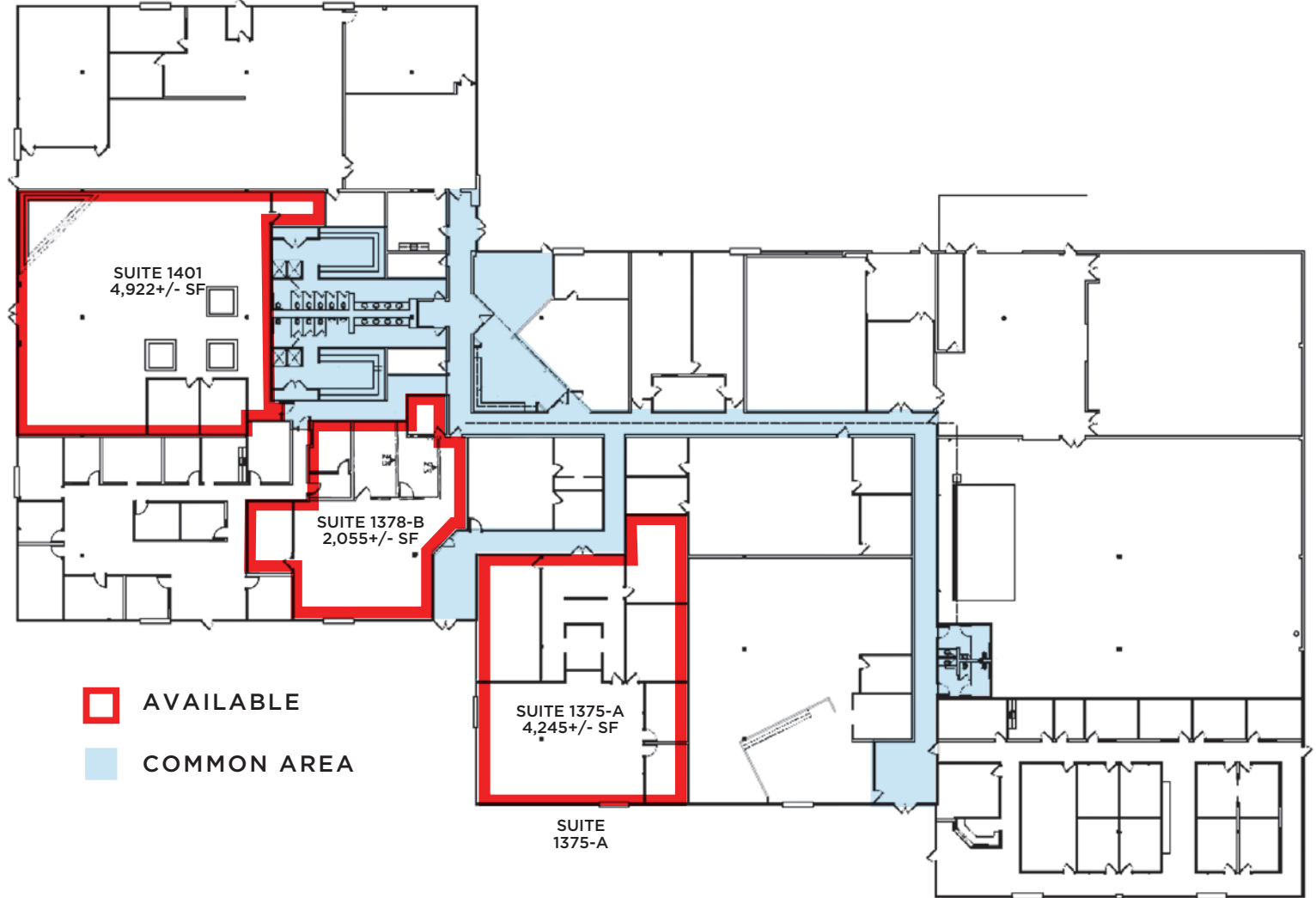


# FLOOR PLAN



1375 - 1401  
CORPORATE CENTER PKWY  
SANTA ROSA, CA

OFFICE SPACE  
FOR LEASE



PRESENTED BY:

**SHAWN JOHNSON, MANAGING PARTNER / SIOR  
KEEGAN & COPPIN CO., INC.**  
LIC # 00835502 (707) 528-1400, EXT. 238  
SJOHNSON@KEEGANCOPPIN.COM

Keegan & Coppin Company, Inc.

The above information, while not guaranteed, has been secured from sources we believe to be reliable. Submitted subject to error, change or withdrawal. An interested party should verify the status of the property and the information herein.

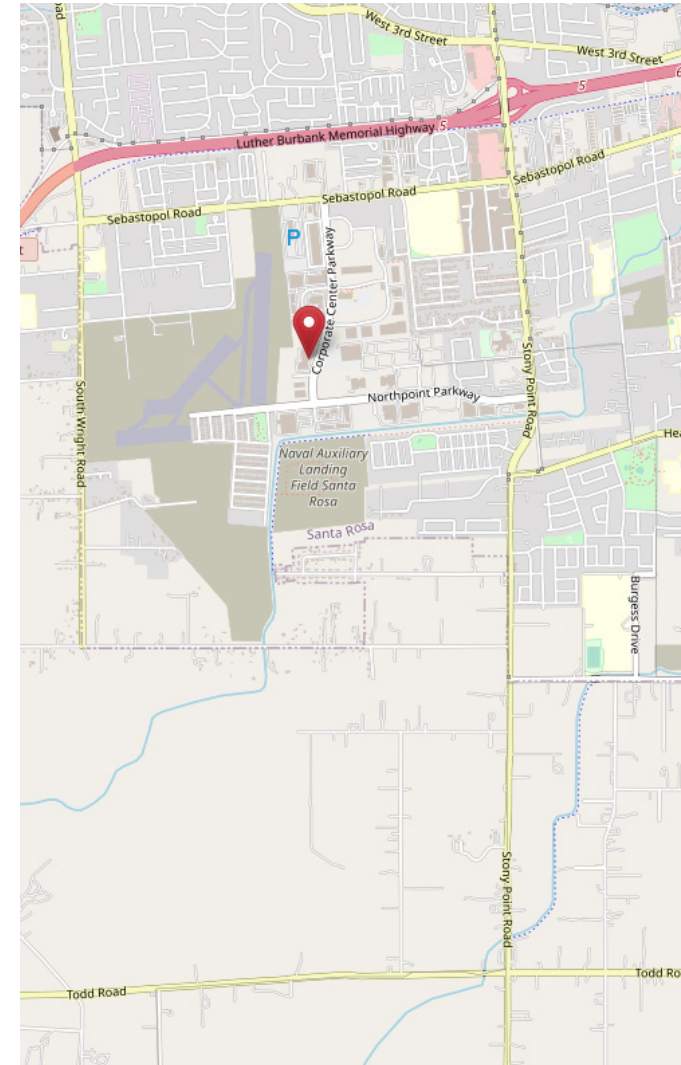
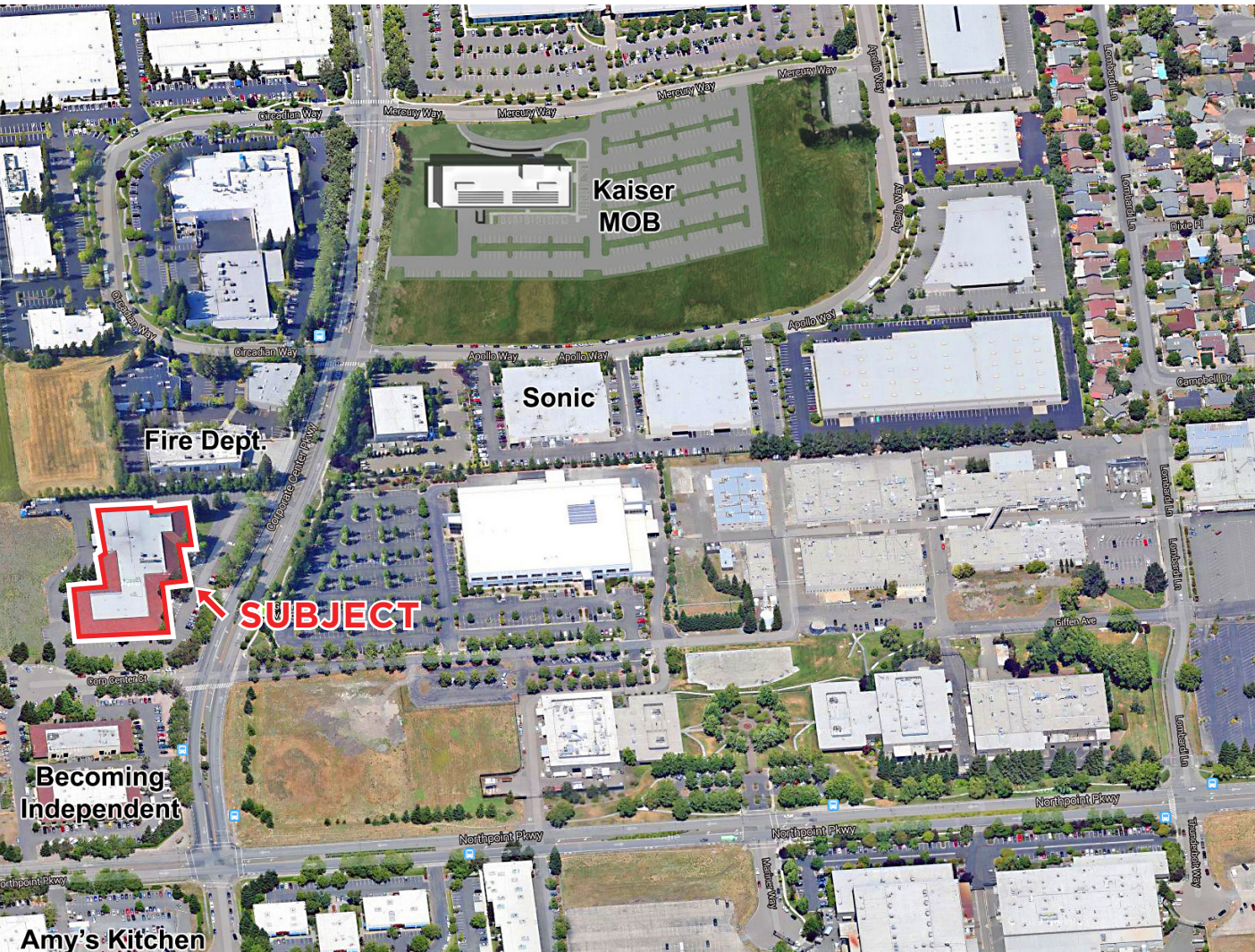


# PROPERTY VICINITY



1375 - 1401  
CORPORATE CENTER PKWY  
SANTA ROSA, CA

OFFICE SPACE  
FOR LEASE



**PRESENTED BY:** SHAWN JOHNSON, MANAGING PARTNER / SIOR  
KEEGAN & COPPIN CO., INC.  
LIC # 00835502 (707) 528-1400, EXT. 238  
SJOHNSON@KEEGANCOPPIN.COM

Keegan & Coppin Company, Inc.  
The above information, while not guaranteed, has been secured from sources we believe to be reliable.  
Submitted subject to error, change or withdrawal. An interested party should verify the status of the property  
and the information herein.