



WILLOWBROOK

Location:

545 Willowbrook Center Parkway, Willowbrook, IL. Located in the east end of the I-55 Corridor in DuPage County. Between Madison Street and Route 83, south of Plainfield Road and north of Joliet Road. Very quick access to I-55, I-295 and I-88.

**Currently
Available:**

9,223 SF. 5,933 SF of warehouse and 3,290 SF of office.

Call for Details.

545 Willowbrook Center Parkway, Willowbrook, IL

- 5,933 SF of Warehouse
- 25' Clear
- Enclosed Dock
- Overhead Door
- 3,290 SF of Office
- Vestibule Lobby
- Reception with Built in Desk
- 6 Offices
- Large Open Office Area
- Conference Room
- Breakroom
- 2 Restrooms







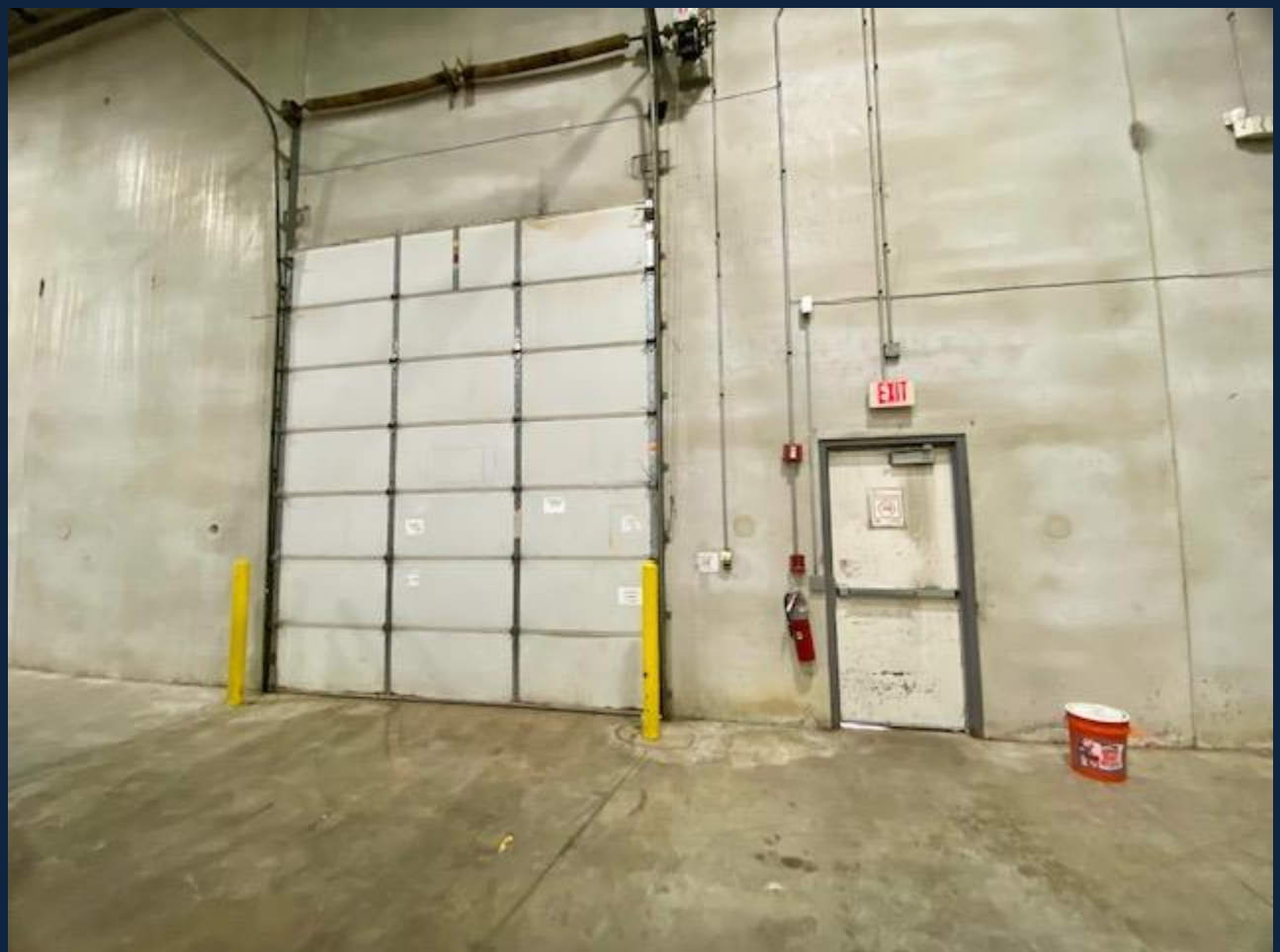


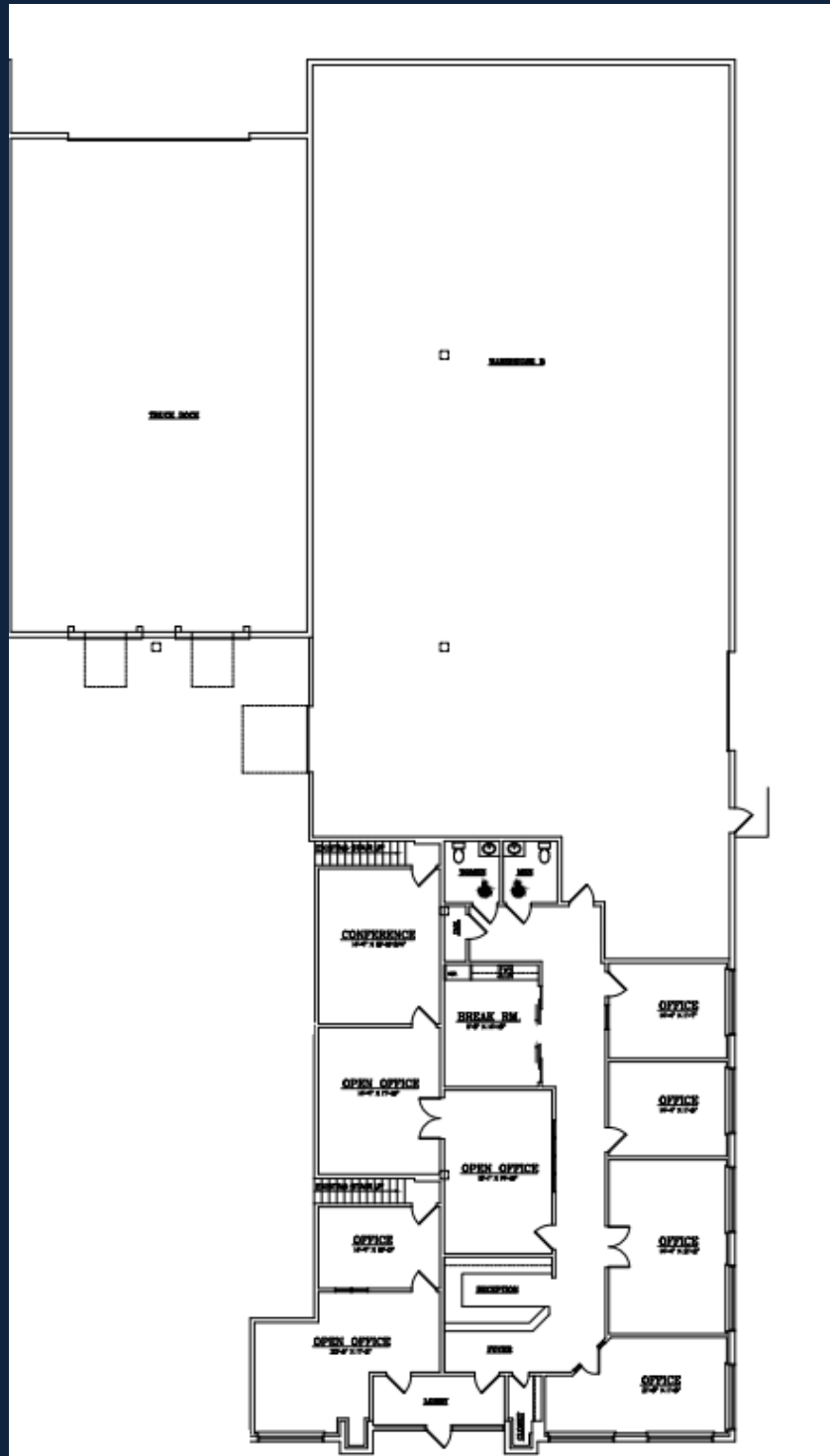












Chris Schramko
 (630) 986-9400 or cjschramko@schramko.com
 113 S. Garfield Street, Suite 200, Hinsdale, IL 60521
www.schramko.com

All information is from sources believed reliable, not independently verified, and thus subject to errors, omissions, and modifications such as price, listing, square footage, rates and commissions. All information, including market assumptions and conditions, are subject to change, and the changes could be material. SREC makes no express or implied representations or warranties, as facts and results may vary materially from all information, estimates and projections. Properties are subject to prior sale, withdrawal and other sales or rental conditions. Terms are subject to errors, omissions and change without notice.