

LEASE

1100 BUILDING

1100 NW GLISAN STREET, PORTLAND, OR 97209



The [Pearl District Portfolio](#) is a member of the NW Community Conservancy (NWCC), a humanitarian and security initiative improving safety and livability in the Pearl District.

Apex Real Estate Partners
 415 NW 11th Avenue, Portland, OR 97209
 503.595.2840 / www.apexcre.com

Max Schlesinger, Broker
 971.703.4702
 Max@apexcre.com



AVAILABLE



SUITE 2C

SUITE 2C: ± 1,145 RSF

- » Space is broken out into 2 open work areas by glass partition
- » Conference room/office space and kitchenette
- » Asking rate \$19.00/RSF, NNN

SUITE 3B: ± 2,494 RSF

- » Open, collaborative layout with reception area and 1 large conference room
- » Large skylight and operable windows for great natural air flow
- » Asking rate \$19.00/RSF, NNN



SUITE 3B



SUITE 3B

BUILDING HIGHLIGHTS

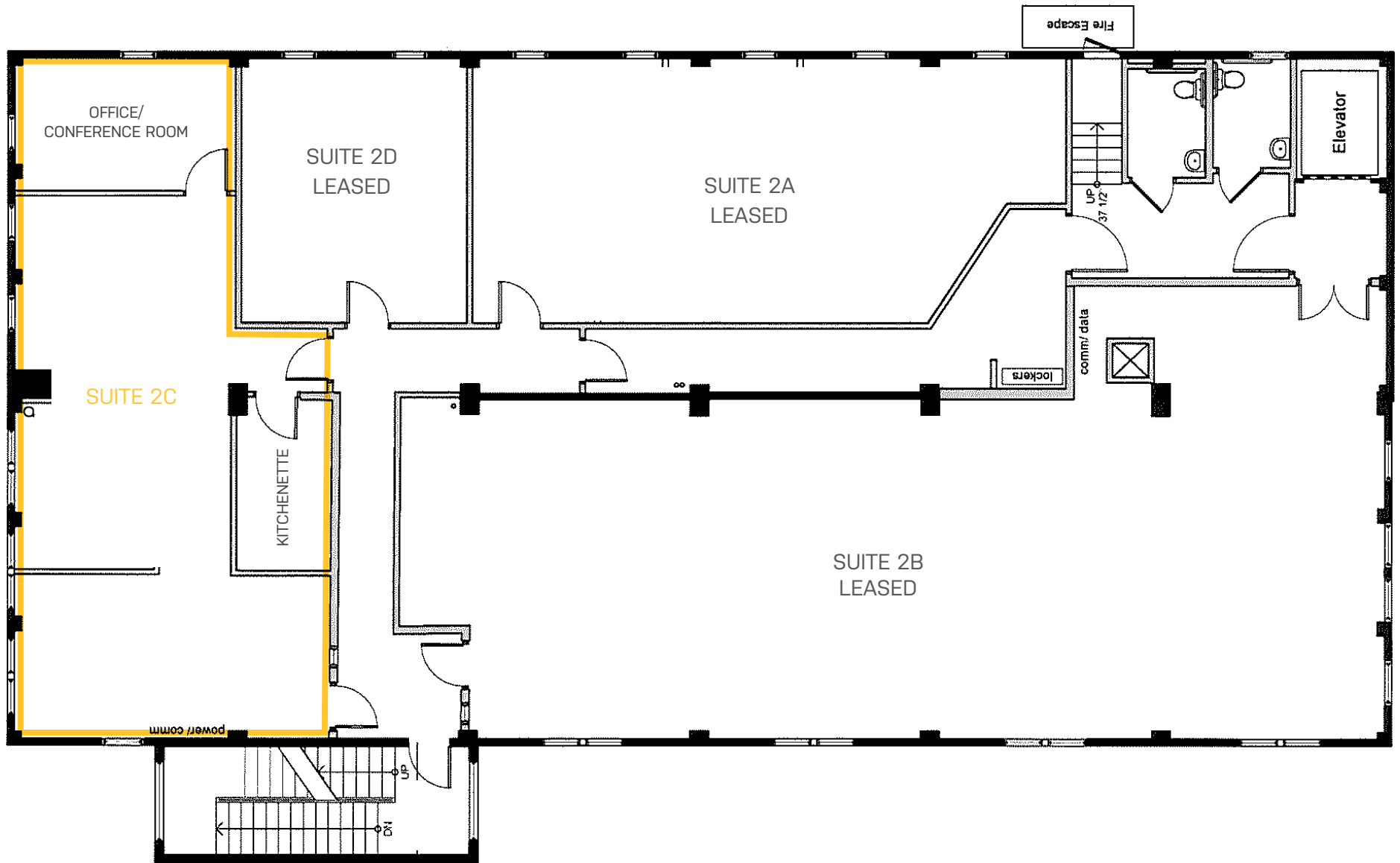
- » Beautiful hardwood floors
- » High exposed ceilings with expansive window lines offer abundant natural light
- » New lighting
- » Operable windows for great natural air flow
- » Elevator served

LOCATION

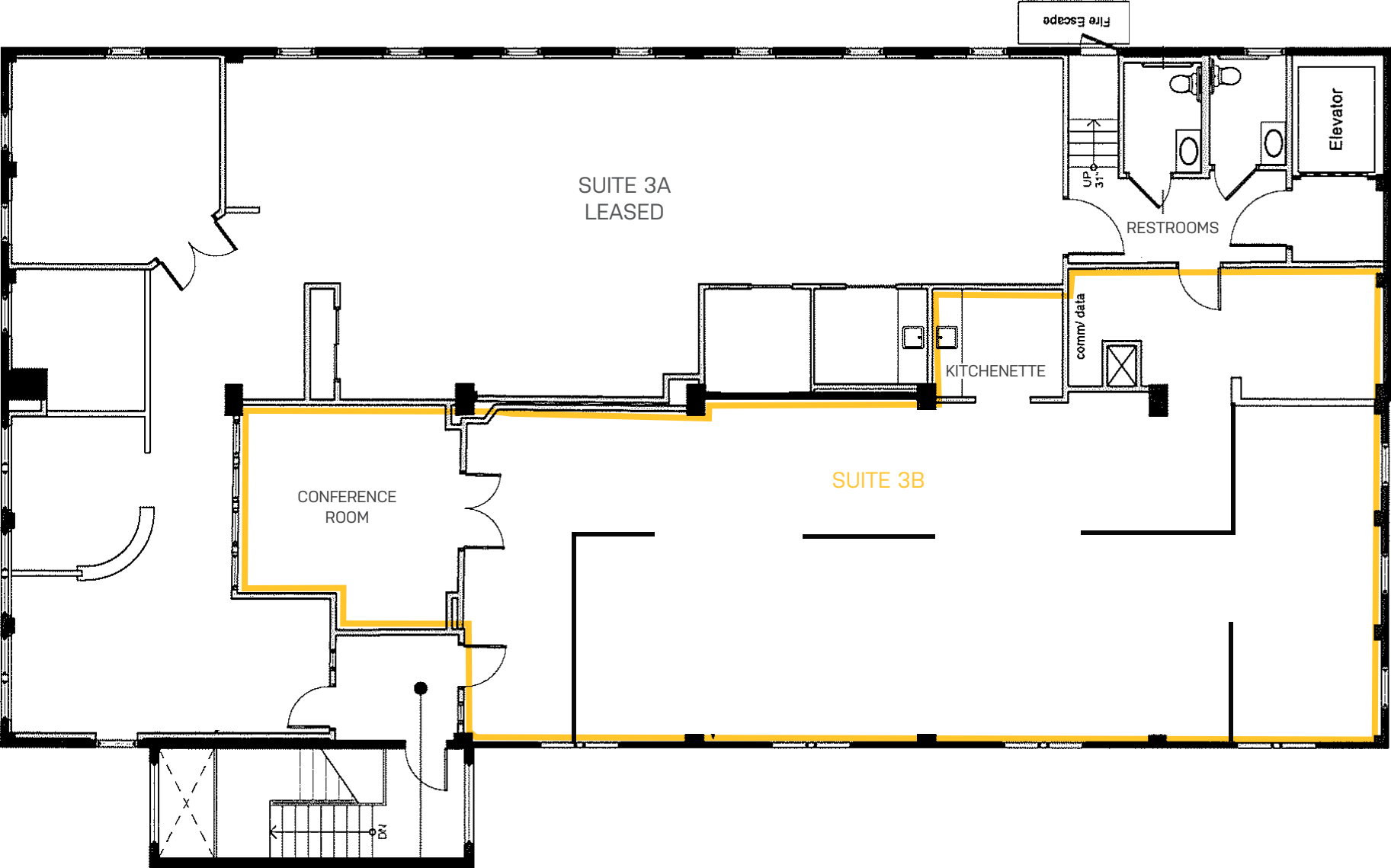
- » Just steps away from countless bars, restaurants and shopping in the Pearl District and Central Business District
- » Portland Streetcar and TriMet bus stops outside of 1100 Building
- » Parking in adjacent lot available for tenants and clients
- » Easy access to I-405, Northwest and the Central Business District



SECOND FLOOR



THIRD FLOOR



PEARL DISTRICT LOCATION

The 1100 Building is in an excellent location in the heart of Portland's creative Pearl District.

It is situated along the same block as the TriMet bus line and Portland Streetcar. The building is mere steps from Portland's premiere mix of art galleries, restaurants, boutiques and amenities. The Pearl District provides the one of the most vibrant, dynamic and energetic entertainment areas within the City of Portland. It's central location makes it very accessible for employees and clients commuting from all over the Portland area with easy access to surrounding freeways, bridges and mass transit.



WALK SCORE 99

Walker's Paradise - Daily errands do not require a car



BIKE SCORE 97

Biker's Paradise - Daily errands can be accomplished on a bike



TRANSIT SCORE 92

Rider's Paradise - World class public transportation



TRIMET STOP (PARTIAL LIST)

TRIMET BUS

PORTLAND STREETCAR

TRIMET MAX