

# PRIME COMMERCIAL LOT AVAILABLE FOR GROUND LEASE

11415 West Markham Street, Little Rock AR 72211

Lot Size: .34 Acres (14,810 SF)

Starting Annual Ground Rent: \$65,000 NNN



Offered Exclusively By



Jill Bryant, Principal Broker

501-868-9790 Ext 113

501-604-4551 Text

[jill@westgroupllc.com](mailto:jill@westgroupllc.com)

License #PB00048556

## HIGHLIGHTS

- High Visibility Location
  - Signalized Access
  - High Traffic Count (27,000 ADT)
- Across From National Retailers and Restaurants
  - All Utilities at Site

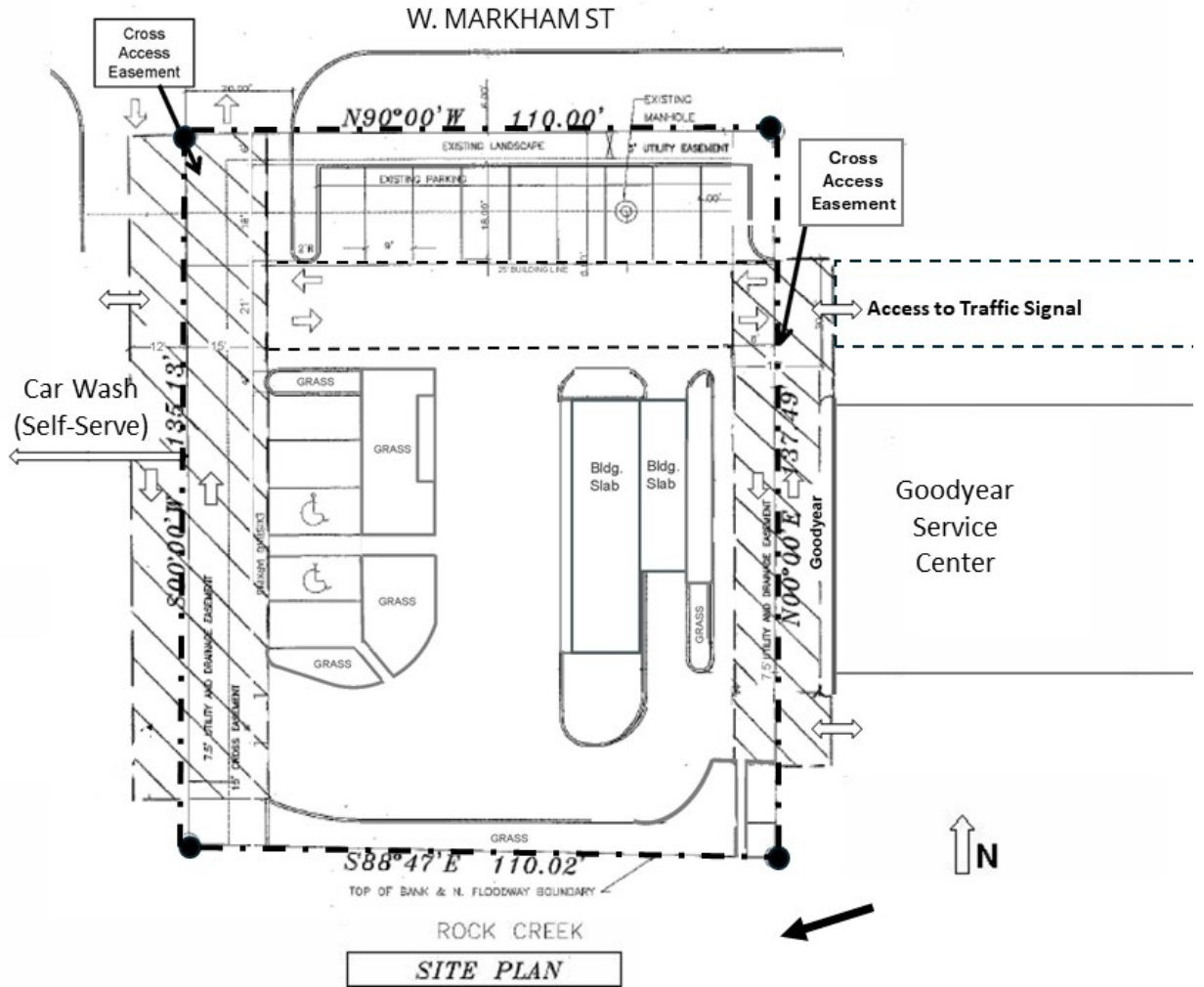
## Neighborhood Key Uses



## Site Layout



# Site Plan



## PHOTOS

VIEW FROM MARKHAM TO SOUTH



VIEW FROM SOUTH BOUNDARY TO MARKHAM (NORTHWEST)



# LOCATION MAPS

