



7540 McEwen Road

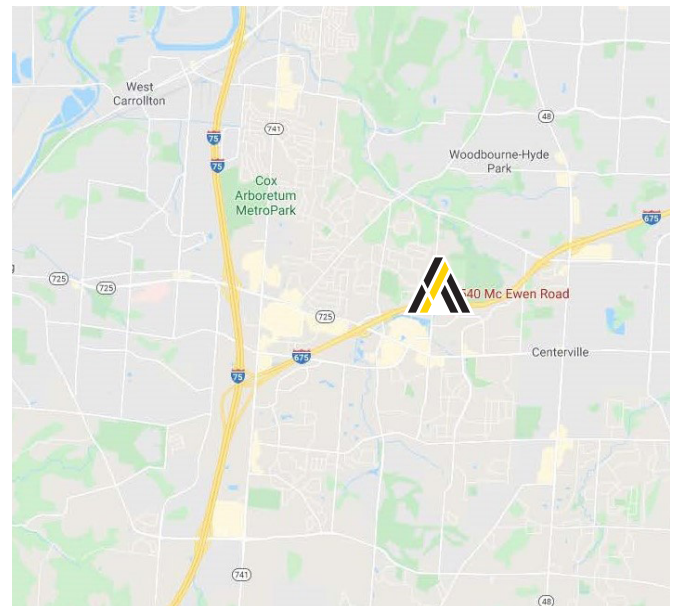
Washington Township, Ohio

LEASE RATE:

\$7.50 PSF NNN

Property Highlights

- 4,915± SF Total
- Up to 10,246± SF contiguous available space
- 1,290± SF Office
- 3,625± SF Warehouse
- Concrete tilt-up construction
- 19' Clear height
- 1 Dock
- LED Lights
- Park like setting property located near I-675
- No city income tax!
- Available 1/1/2025



Wade Elliott, SIOR

Vice President

937.469.8270

Wade.Elliott@ApexCommercialGroup.com



Alex Nikolai

Senior Associate

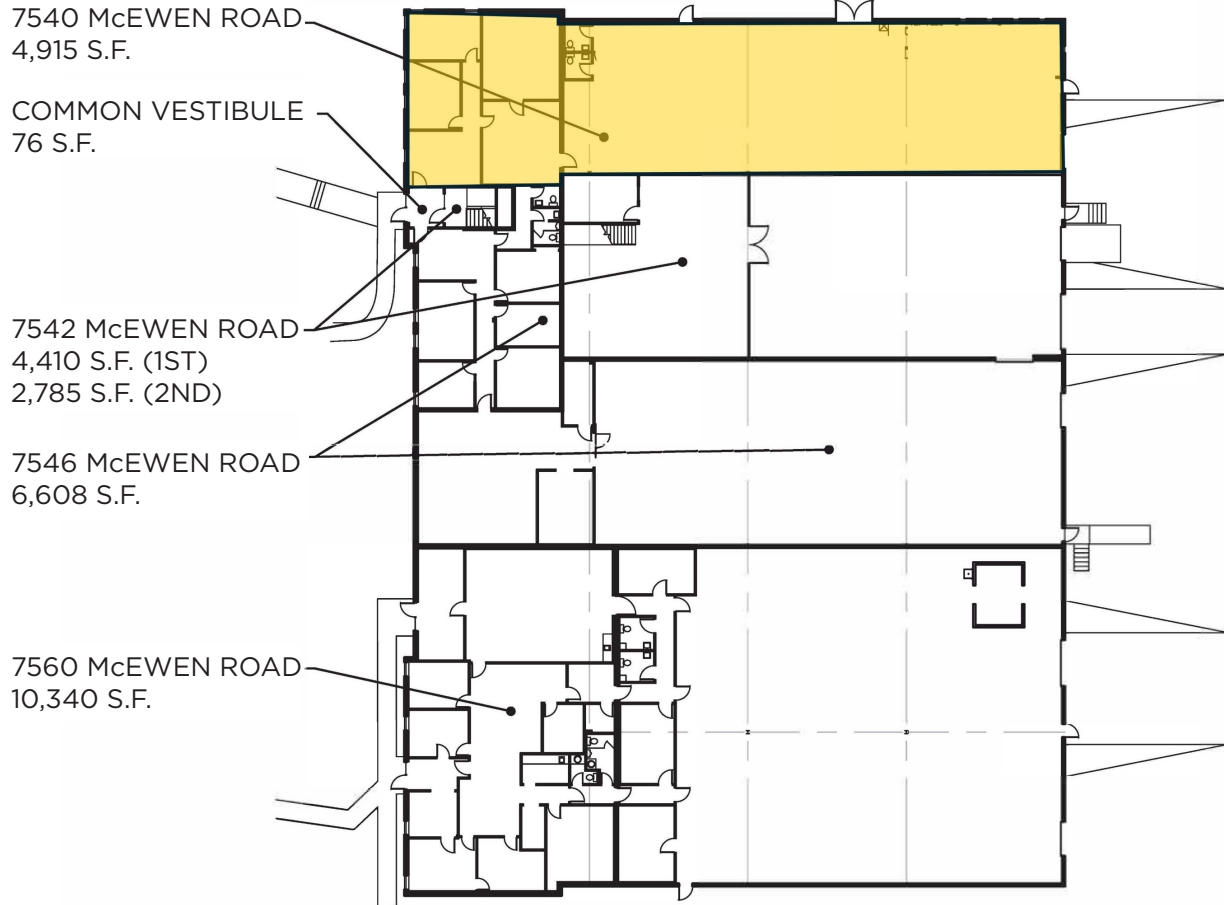
937.222.7884

Alex.Nikolai@ApexCommercialGroup.com

7540 McEwen Road

Washington Township, Ohio

Building Plan



Floor Plan

