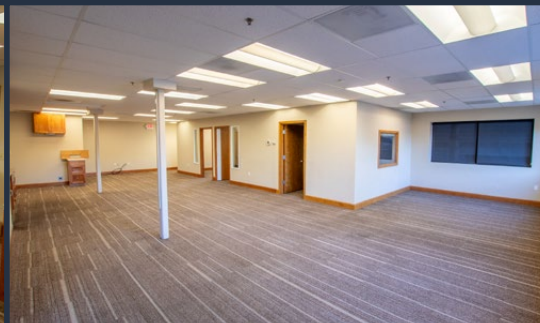


FOR LEASE

1,883 SF | \$1.35/SF/MO. NNN

Redmond Airport Business Park Office

2747 SW 6th Street, Redmond, OR 97756



PROPERTY DETAILS

Suite 103:	1,883 SF
Lease Rate:	\$1.35/SF/Mo. NNN
CAMs:	Est. at \$0.25/SF/Mo.
Bldg. Size:	20,750 SF
Zoning:	Light Industrial (M1)
Parking:	36 onsite spaces plus 3 ADA stalls

HIGHLIGHTS

- Large windows provide abundant natural light
- Light Industrial zoning allows flexibility for a variety of industry-related businesses
- Space includes three offices, a server room, a kitchen area, and a private restroom
- Neighboring businesses include Pacific Construction & Development and Central Oregon Garage Door

Dan Kemp, CCIM | Emilio Tiscareno, Broker

600 SW Columbia St., Ste. 6100 | Bend, OR 97702

541.383.2444 | www.CompassCommercial.com

COMPASS
COMMERCIAL

REAL
ESTATE
SERVICES

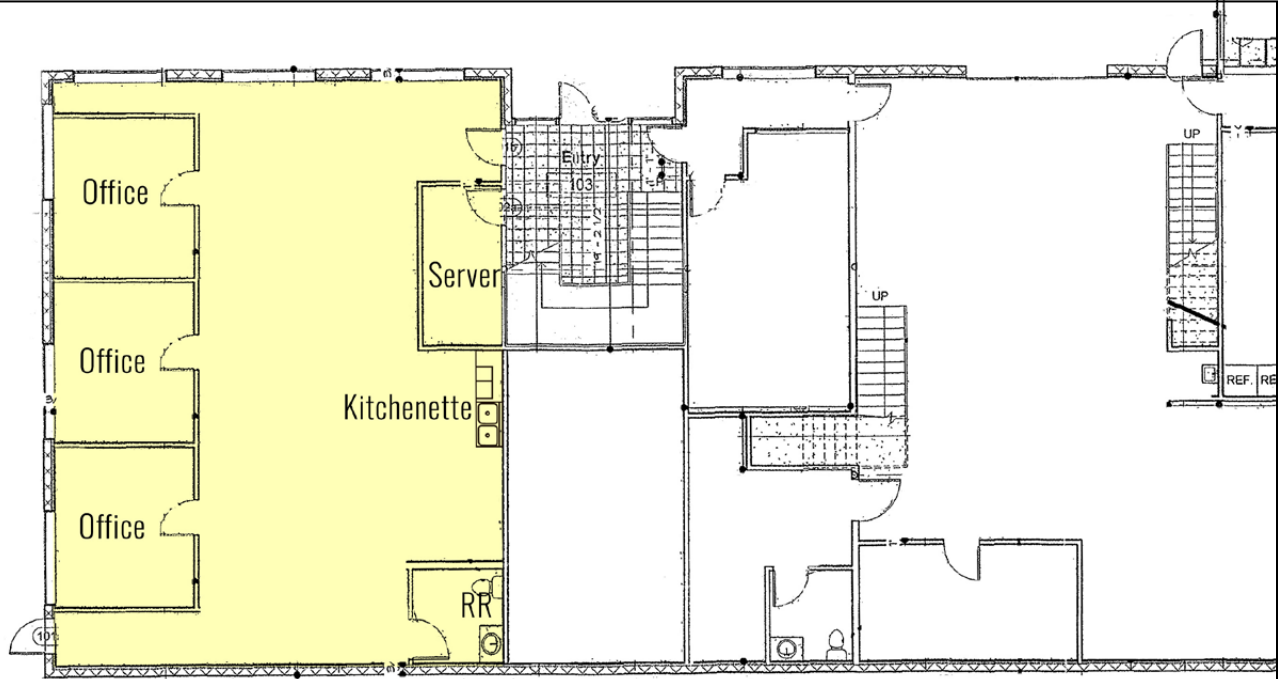
FOR LEASE

1,883 SF | \$1.35/SF/MO. NNN

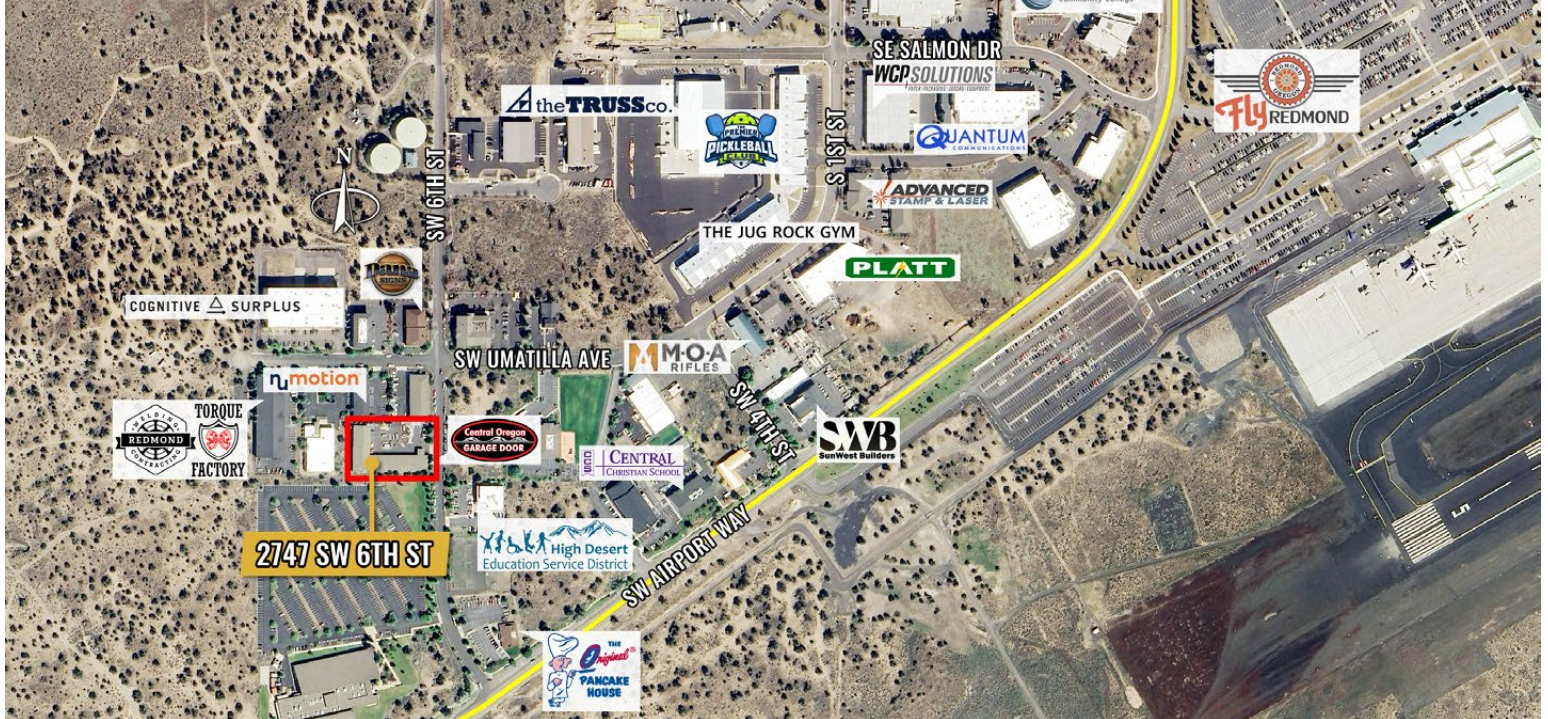
Redmond Airport Business Park Office

2747 SW 6th Street, Redmond, OR 97756

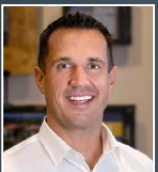
FLOOR PLAN



*Floor Plan is Approximate



Brokers are licensed in the state of Oregon. This information has been furnished from sources we deem reliable, but for which we assume no liability. This is an exclusive listing. The information contained herein is given in confidence with the understanding that all negotiations pertaining to this property be handled through Compass Commercial Real Estate Services. All measurements are approximate.



Dan Kemp, CCIM
Partner, Principal Broker
Cell 541.550.8413
dkemp@compasscommercial.com



Emilio Tiscareno
Broker
Cell 541.213.9640
etiscareno@compasscommercial.com

COMPASS
COMMERCIAL

REAL ESTATE
SERVICES