

Just Listed

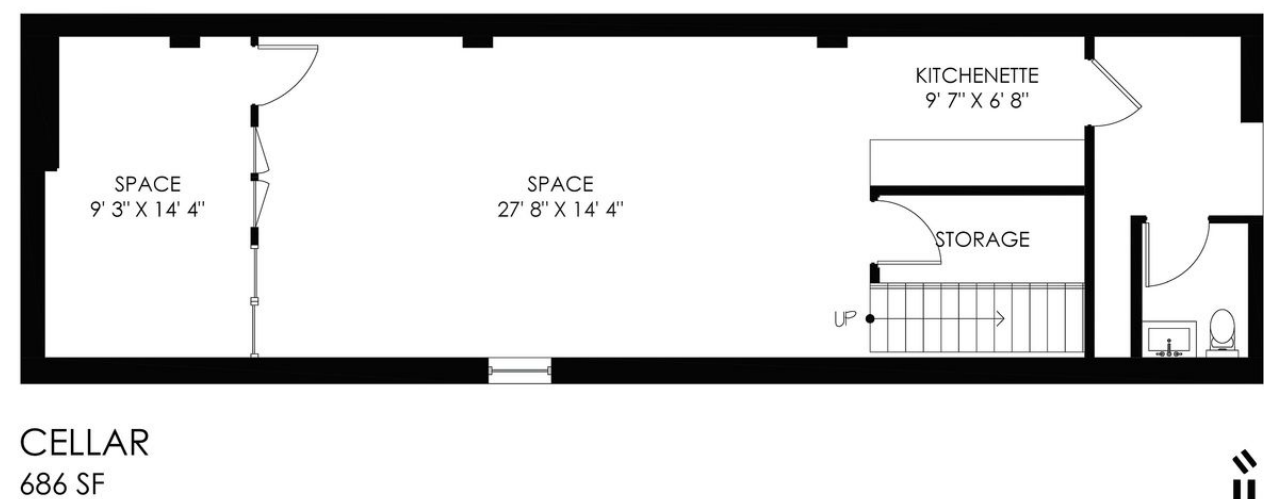
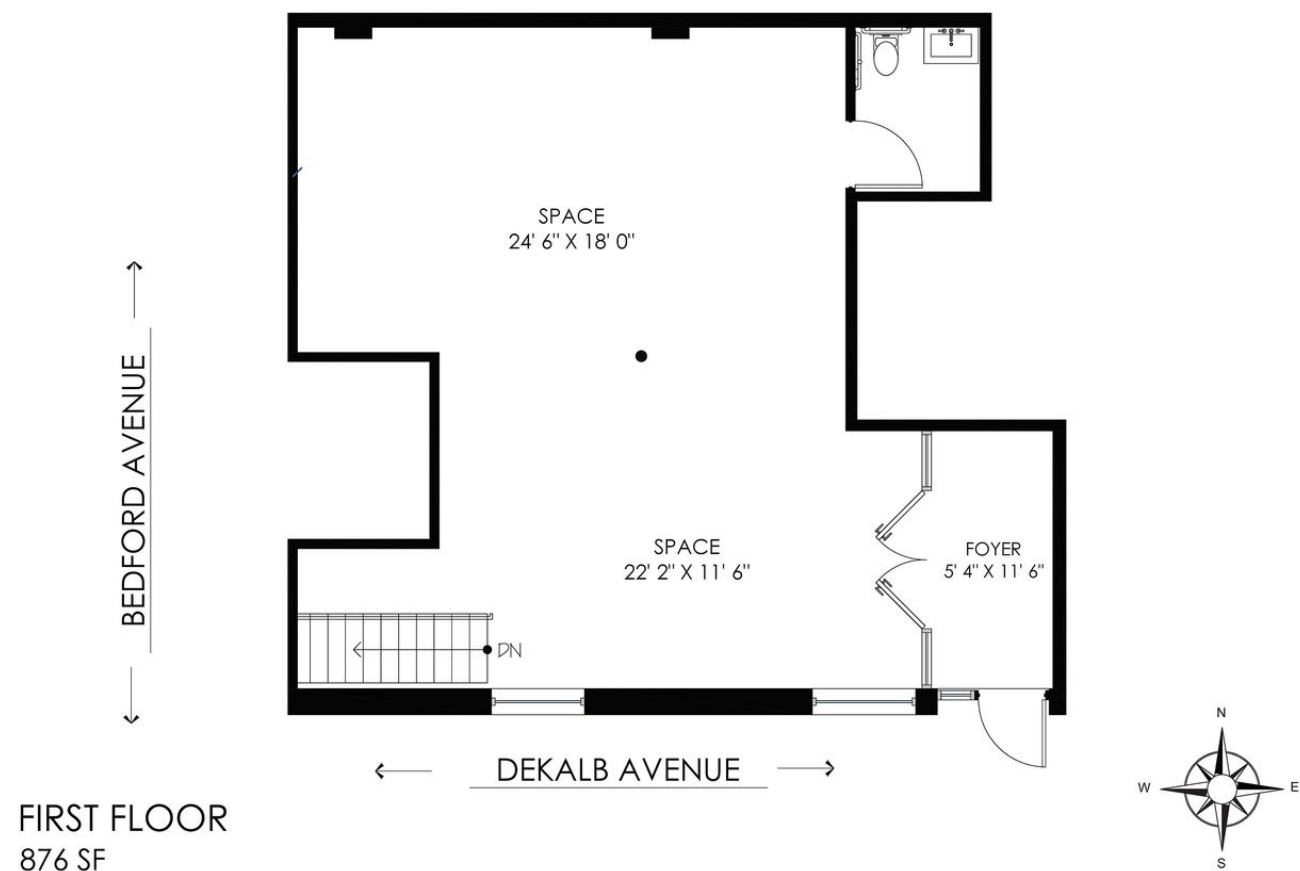
SPACE FOR LEASE

COMPASS COMMERCIAL



535 Dekalb Avenue, Suite 1A
Bedford-Stuyvesant

1,560 SF Duplex \$5,000



Your 2026 Dream Business Starts Here!

Welcome to 535 Dekalb Avenue in the heart of Bedford-Stuyvesant (off Bedford Avenue). A charming loft style building with old-school Brooklyn vibes.

Perfect for either office or retail space. Foot traffic galore right outside your doorstep in one of Bed-Stuy's busiest blocks.

Endless possibilities to build your dream business in 2026 starts here in one of Brooklyn's most coveted neighborhoods!



Interior Features

- 875+ sf on ground floor and 685+ sf in cellar level
- Possibility for Landlord to allow subleasing of Cellar portion
- Charming Exposed Brick on ground level
- 11.5 ft ceilings with oversized recessed lighting
- Private Storefront entrance
- Double-Set of heavy duty glass keyed vestibule doors with foyer
- Two Massive Industrial Size Windows on Ground Floor
- Bathroom at each level
- Central HVAC on upper level & ductless mini split on lower level
- Employee Kitchenette & Ample Storage
- Tenant Tax Contribution of \$750/month



COMPASS COMMERCIAL



Jonathan Kramer

Lic. R.E. Salesperson

M: 516.423.9581

jonathan.kramer@compass.com



Compass is a licensed real estate broker. All material is intended for informational purposes only and is compiled from sources deemed reliable but is subject to errors, omissions, changes in price, condition, sale, or withdrawal without notice. No statement is made as to the accuracy of any description or measurements (including square footage). This is not intended to solicit property already listed. No financial or legal advice provided. Equal Housing Opportunity. All Coming Soon listings in NYC are simultaneously syndicated to the REBNY RLS. Photos may be virtually staged or digitally enhanced and may not reflect actual property conditions.