

FOR LEASE ±83.63 AC

GREENSPORT INDUSTRIAL

LILA LN. & SARAHS LN. HOUSTON, TX 77015



±77,000 SF Warehouse



Heavily Stabilized Site



Sites Bordered by PTR A & Union Pacific Rail



Centerpoint Energy



Heavy Industrial Neighbors



~2.4 Miles to the Houston Ship Channel



Barge Slip
±310'D x 110'W



Located in Harris County



City of Houston Utilities



Immediate Access to Interstate 10 & Beltway 8



Located 12 miles from Houston CBD



Adjacent to Watco Greensport



UP and PTR A Rail Adjacent



Located on Greens Bayou

DIVISIBLE TO 42.93 OR 40.7 ACRES | RAIL/BARGE CAPABLE



ExxonMobil

BELTWAY
8

CEDAR PORT
INDUSTRIAL PARK



PORT OF HOUSTON

BARBOURS CUT
TERMINAL

BAYPORT CONTAINER
TERMINAL

INEOS



GREENS BAYOU

42.93 AC

40.7 AC

INDUSTRIAL RD.

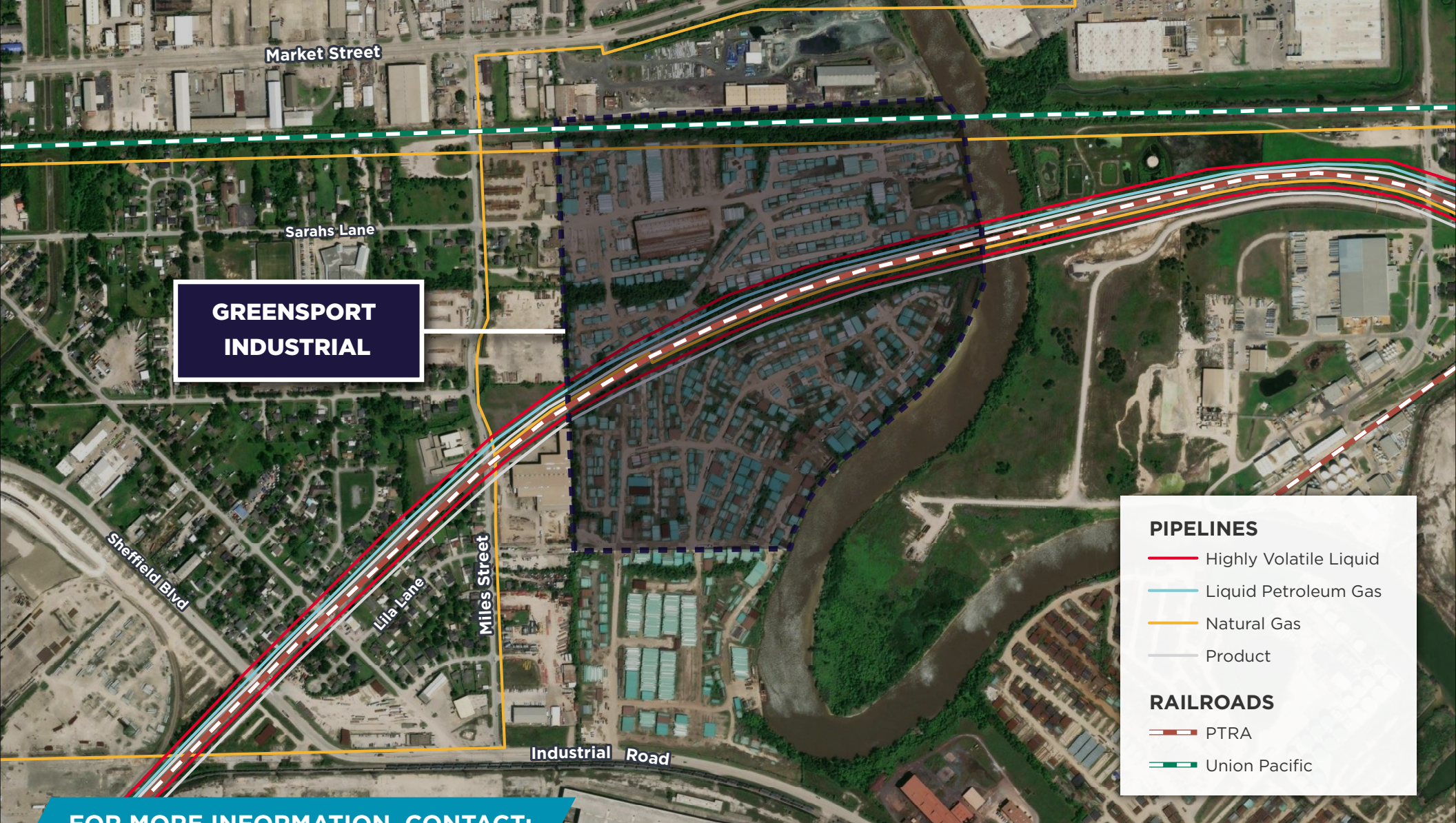
LILA LN.

SARAHS LN.

MILES ST.

MARKET ST.

DESTINATION DRIVE TIMES	
Interstate 10	3 minutes
Beltway 8 East	8 minutes
610 Loop East	11 minutes
Barbours Cut Terminal	29 minutes
Cedar Port Industrial Park	29 minutes
Port Of Houston (Care)	16 minutes
Jacintoport Int.	15 minutes



JIM FOREMAN
Vice Chairman
Direct: (713) 963 2824
jim.foreman@cushwake.com

BEAU KALEEL, SIOR
Executive Managing Director
Direct: (713) 963 2844
beau.kaleel@cushwake.com

©2025 Cushman & Wakefield. All rights reserved. The information contained in this communication is strictly confidential. This information has been obtained from sources believed to be reliable but has not been verified. NO WARRANTY OR REPRESENTATION, EXPRESS OR IMPLIED, IS MADE AS TO THE CONDITION OF THE PROPERTY (OR PROPERTIES) REFERENCED HEREIN OR AS TO THE ACCURACY OR COMPLETENESS OF THE INFORMATION CONTAINED HEREIN, AND SAME IS SUBMITTED SUBJECT TO ERRORS, OMISSIONS, CHANGE OF PRICE, RENTAL OR OTHER CONDITIONS, WITHDRAWAL WITHOUT NOTICE, AND TO ANY SPECIAL LISTING CONDITIONS IMPOSED BY THE PROPERTY OWNER(S). ANY PROJECTIONS, OPINIONS OR ESTIMATES ARE SUBJECT TO UNCERTAINTY AND DO NOT SIGNIFY CURRENT OR FUTURE PROPERTY PERFORMANCE.

