



COMMERCIAL REAL ESTATE



**11 ACRES FOR
SALE**

*0 Hughes Road
Madison, Alabama 35758*

SALE

Attention developers! Just over 11 acres of prime commercial land is now available for sale in central Madison. Located in a high traffic commercial area, this land offers endless opportunities for development and growth. Close to retail, medical facilities, and light industry, schools and residential subdivisions, and one of the most traveled roads in Alabama's fastest growing city, this location is ideal for businesses looking to establish a strong presence in the heart of Madison with easy access to major highways and Huntsville International Airport.

The size of the land provides ample space for a variety of commercial ventures such as retail stores, restaurants, medical offices, or light industrial facilities.

PURCHASE PRICE:

\$2,350,000.00

Land Size: 11.12 Acres

Property Size: 484,387 Sq. Ft.

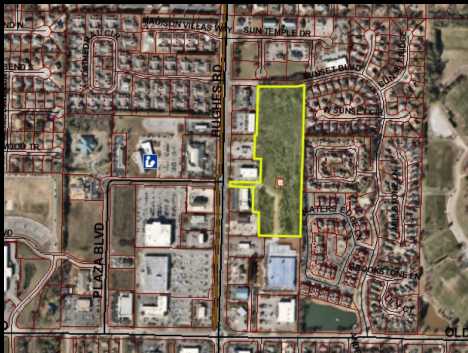
Contact:

256-536-7777

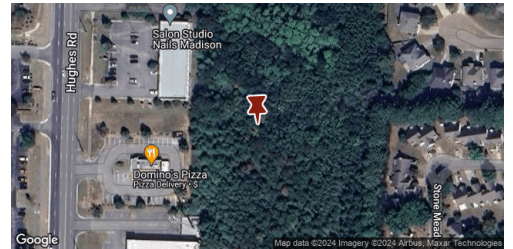
RUSS RUSSELL

CCIM, ALC, CEA

russ@russrussell.com



NO
IMAGE
AVAILABLE



This information has been obtained from sources believed reliable. We have not verified it and make no guarantee, warranty or representation about it. Any projections, opinions, assumptions or estimates used are for example only and do not represent the current or future performance of the property. You and your advisors should conduct a careful, independent investigation of the property to determine to your satisfaction the suitability of the property for your needs. Photos herein are the property of their respective owners and use of these images without the express written consent of the owner is prohibited.

Contact:
256-536-7777

RUSS RUSSELL
CCIM, ALC, CEA
russ@rus Russell.com