

# 100 AVENUE OF CHAMPIONS

## BUILDING SIGNAGE AVAILABLE



PLUG & PLAY HQ OFFICE SPACE WITH GOLF COURSE VIEWS

 View Drone Video



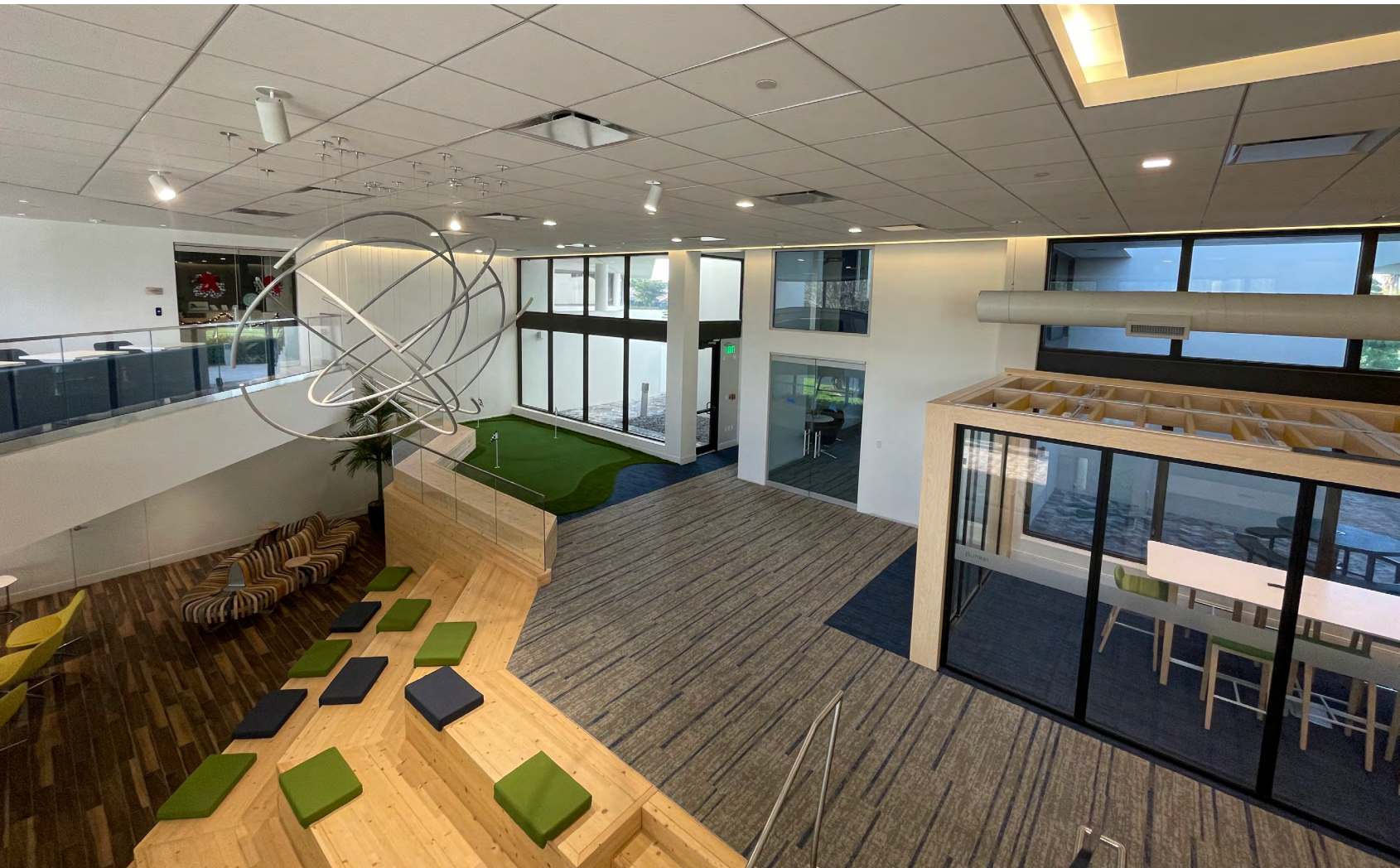
*Rendering*



# PROPOSED FOR MEDICAL USE

## PROPERTY HIGHLIGHTS

-  Located in PGA National Resort & Community just west of the Florida Turnpike on one of the golf courses
-  Immediate Access to Florida's Turnpike & I-95
-  26 minute drive to Palm Beach Int'l Airport
-  Surrounded by many of Palm Beach Gardens best dining and retail, residential communities, and Country Clubs
-  Recently renovated with hurricane impact windows and doors
-  Ample free parking 4/1,000 SF





# HIGH-TECH INTERIOR FINISHES

Suite 130: 10,158 sf

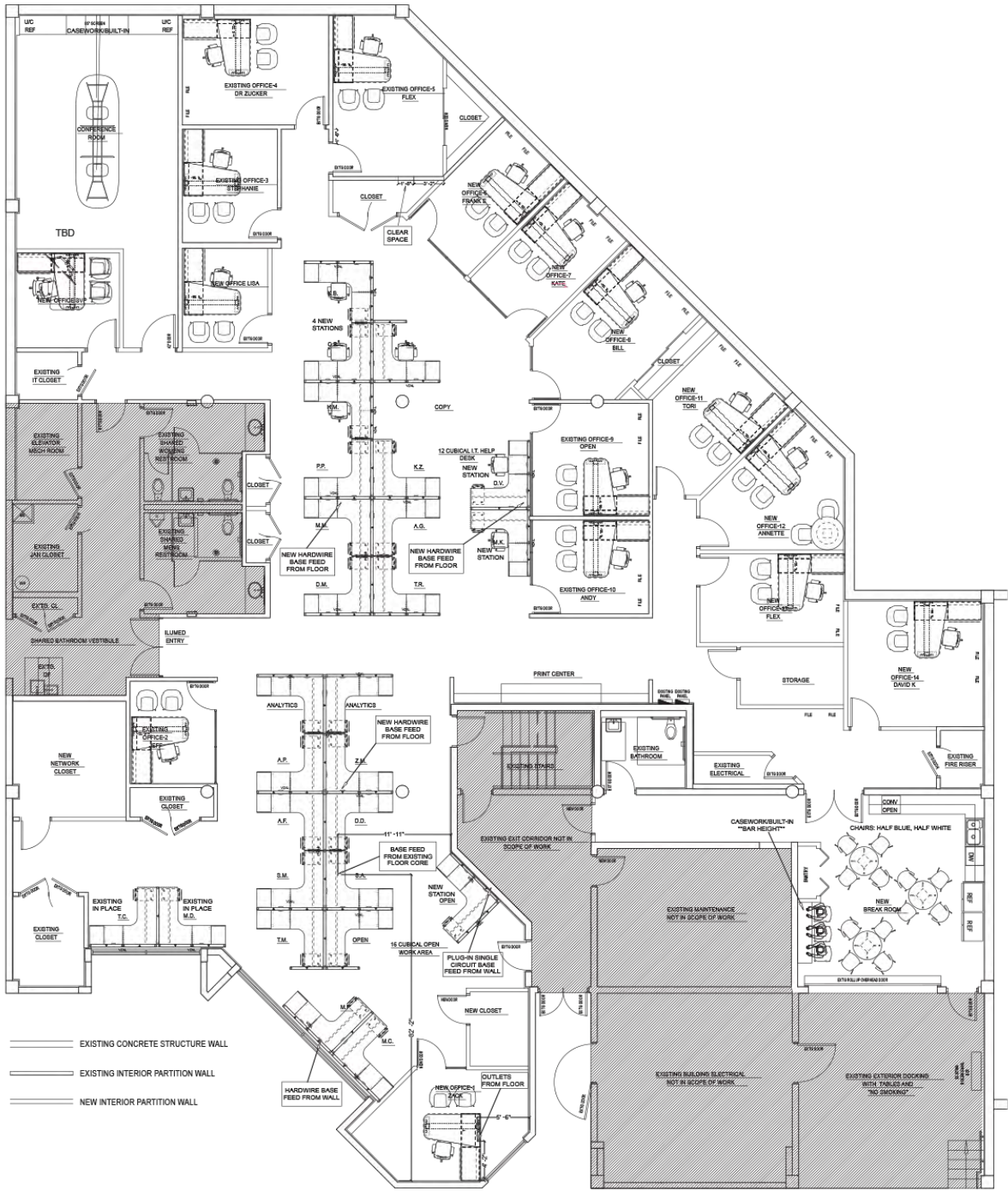


**Space Features**

- Move-in ready
- Controlled remote access
- Contemporary furniture
- Innovative conference room
- Both open areas and offices
- Open Kitchen
- Small Locker room
- 2nd exterior ingress / egress
- Outside patio area



**VIEW VIRTUAL  
TOUR**





# NATURAL LIGHT & COLLABORATIVE SPACES

Suite 230: 11,546 sf

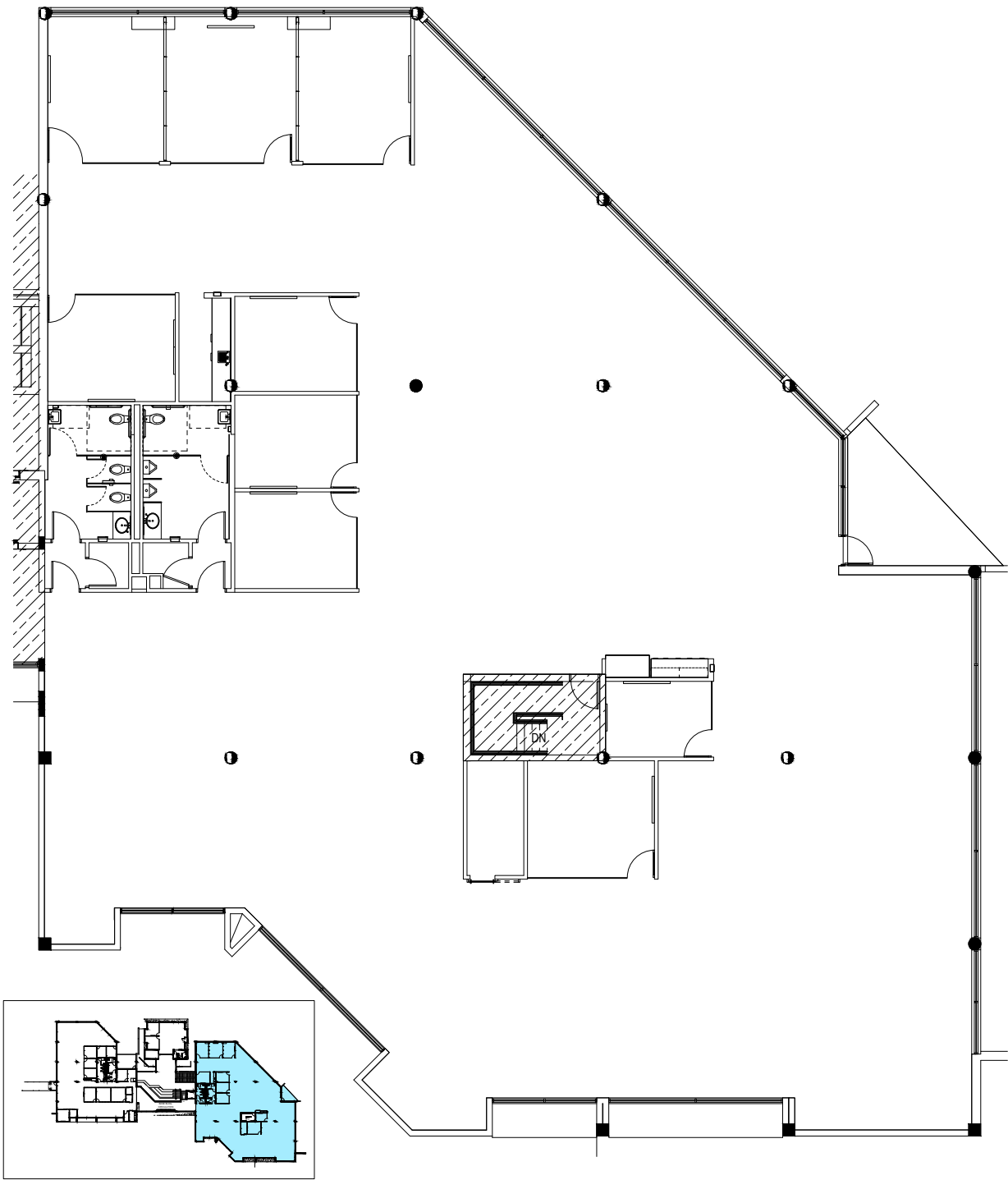


**Space Features**

- Golf course views
- Controlled remote access
- Private restrooms
- Contemporary furniture
- 3 Innovative conference rooms
- Both open areas and offices
- Open Kitchen
- Outside patio area
- Great natural light



**VIEW VIRTUAL TOUR**





# 100 AVENUE OF CHAMPIONS

Palm Beach Gardens, FL 33418



For more information, please contact:

CONNIE THOMAS, CCIM  
Senior Managing Director  
561.371.1768  
cthomas@tcrefl.com

**TCRE**  
222 Lakeview Ave | Suite 950 | West Palm Beach, FL 33401  
[www.tcrefl.com](http://www.tcrefl.com)

Any information contained herein has been provided by sources deemed reliable. All information is subject to errors and omissions and is subject to change or withdrawal without notice.