



1.36 SHOVEL-READY ACRES FOR SALE

25th Street, Gulfport, MS 39501

TIM CARLSON • PRINCIPAL

OFFICE: 228.276.2700

MOBILE: 228.547.0707

tcarlson@southeastcre.com

MONTE LUFFEY • PRINCIPAL

OFFICE: 228.276.2700

MOBILE: 228.547.1953

mluffey@southeastcre.com



PROPERTY DESCRIPTION

Southeast Commercial is excited to present a prime 1.36 acre parcel in Gulfport, just west of Highway 49 and east of the Navy CB Base Entrance. This shovel-ready land is perfect for your next business venture. With T4+ zoning, the property offers incredible flexibility, allowing for a mix of residential, office, and retail use. Whether you're planning a commercial development or a mixed-use project, this location offers excellent visibility and access in a growing area. Don't miss this opportunity to secure a versatile property in a prime Gulfport location!

OFFERING SUMMARY

Sale Price:	\$199,900
Lot Size:	1.36 Acres

DEMOGRAPHICS	0.3 MILES	0.5 MILES	1 MILE
Total Households	231	1,147	3,033
Total Population	558	2,680	6,794
Average HH Income	\$45,084	\$50,879	\$50,061

LAND FOR SALE

PROPERTY SUMMARY

SOUTHEAST COMMERCIAL REAL ESTATE | 2310 19th Street Gulfport, MS 39501 | <https://southeastcre.com>



SOUTHEAST
COMMERCIAL
REAL ESTATE



1.36 SHOVEL-READY ACRES FOR SALE

25th Street, Gulfport, MS 39501

TIM CARLSON • PRINCIPAL

OFFICE: 228.276.2700

MOBILE: 228.547.0707

tcarlson@southeastcre.com

MONTÉ LUFFEY • PRINCIPAL

OFFICE: 228.276.2700

MOBILE: 228.547.1953

mluffey@southeastcre.com



LAND FOR SALE

ADDITIONAL PHOTOS

SOUTHEAST COMMERCIAL REAL ESTATE | 2310 19th Street Gulfport, MS 39501 | <https://southeastcre.com>



**SOUTHEAST
COMMERCIAL**
REAL ESTATE



1.36 SHOVEL-READY ACRES FOR SALE

25th Street, Gulfport, MS 39501

TIM CARLSON • PRINCIPAL

OFFICE: 228.276.2700

MOBILE: 228.547.0707

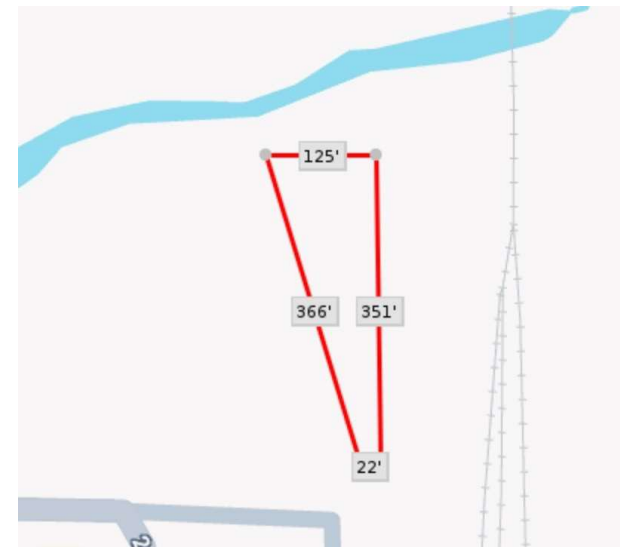
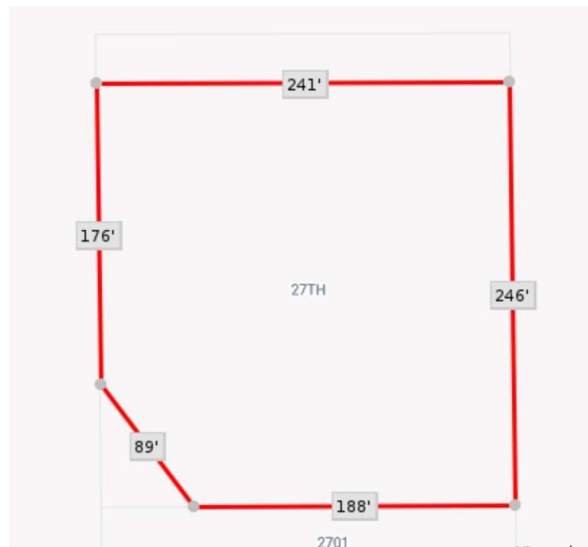
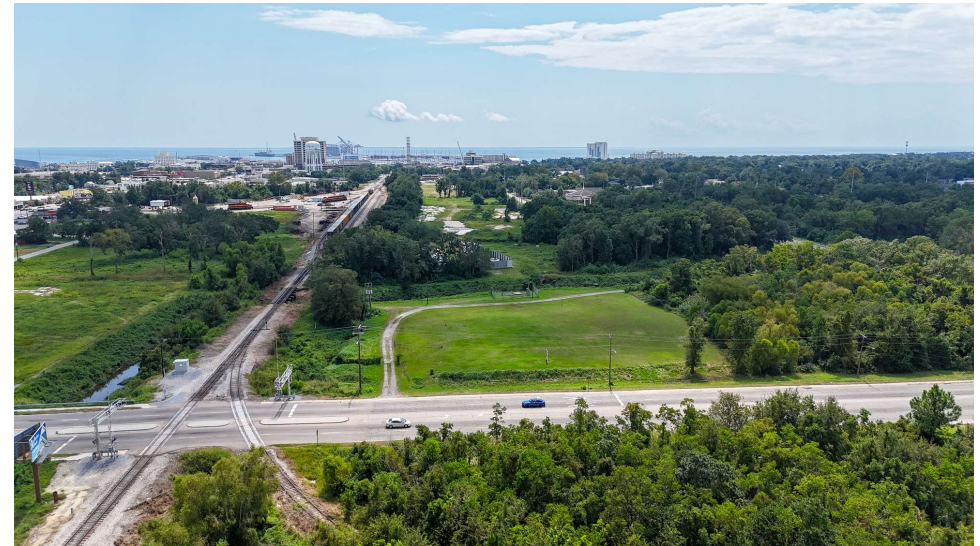
tcarlson@southeastcre.com

MONTE LUFFEY • PRINCIPAL

OFFICE: 228.276.2700

MOBILE: 228.547.1953

mluffey@southeastcre.com



LAND FOR SALE

ADDITIONAL PHOTOS





1.36 SHOVEL-READY ACRES FOR SALE

25th Street, Gulfport, MS 39501

TIM CARLSON • PRINCIPAL

OFFICE: 228.276.2700

MOBILE: 228.547.0707

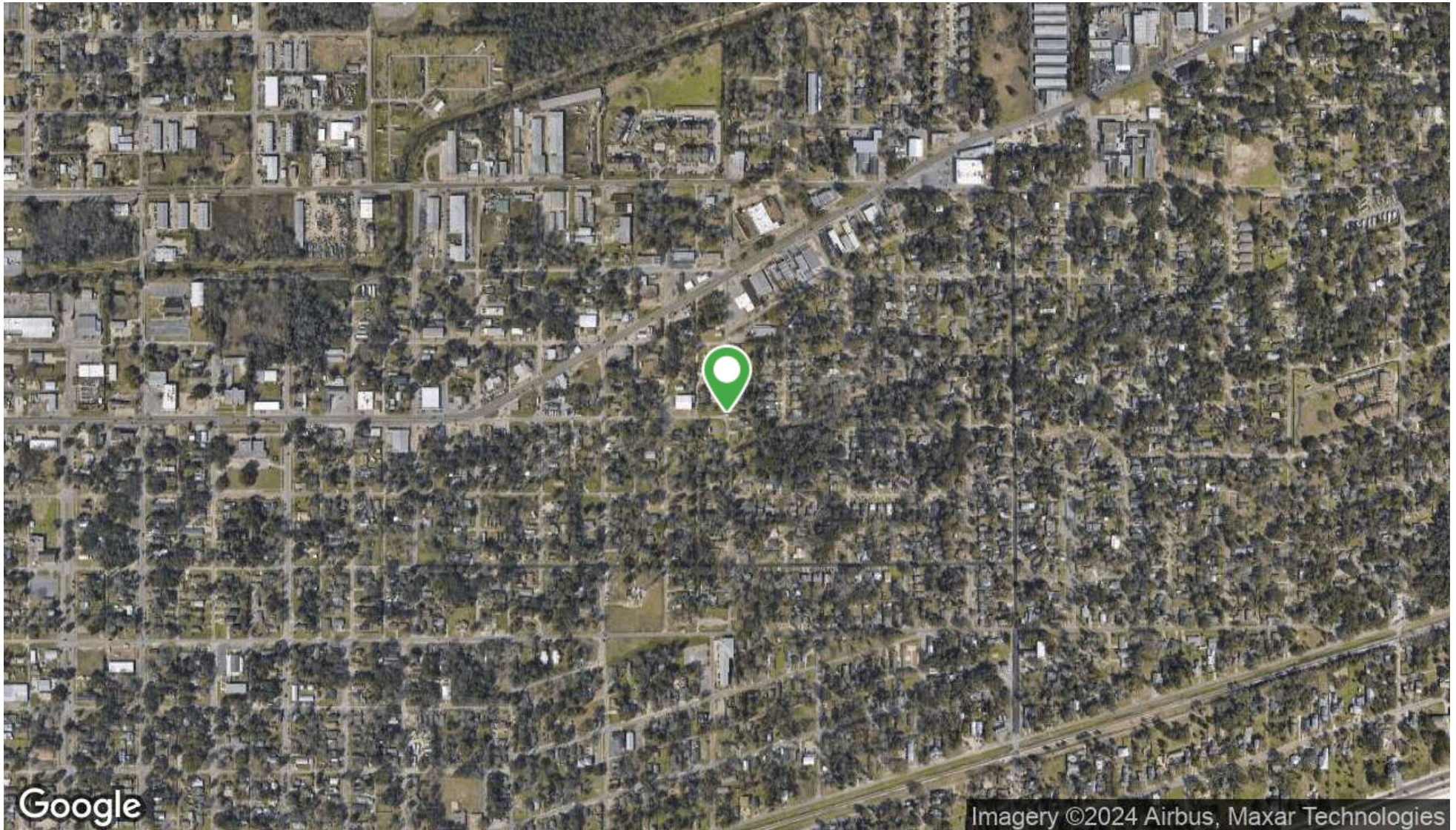
tcarlson@southeastcre.com

MONTE LUFFEY • PRINCIPAL

OFFICE: 228.276.2700

MOBILE: 228.547.1953

mluffey@southeastcre.com



LAND FOR SALE

AERIAL MAP

SOUTHEAST COMMERCIAL REAL ESTATE | 2310 19th Street Gulfport, MS 39501 | <https://southeastcre.com>



**SOUTHEAST
COMMERCIAL**
REAL ESTATE



1.36 SHOVEL-READY ACRES FOR SALE

25th Street, Gulfport, MS 39501

TIM CARLSON • PRINCIPAL

OFFICE: 228.276.2700

MOBILE: 228.547.0707

tcarlson@southeastcre.com

MONTE LUFFEY • PRINCIPAL

OFFICE: 228.276.2700

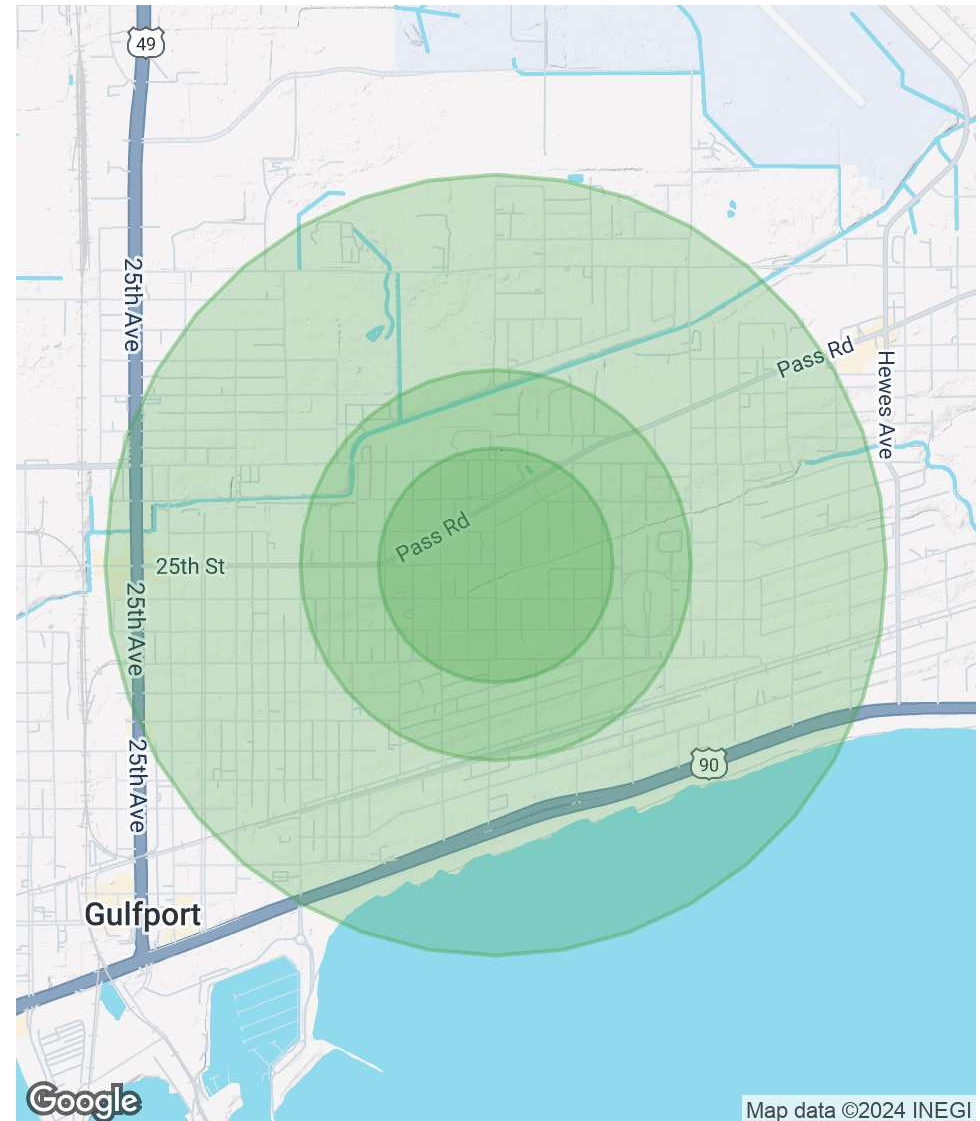
MOBILE: 228.547.1953

mluffey@southeastcre.com

POPULATION	0.3 MILES	0.5 MILES	1 MILE
Total Population	558	2,680	6,794
Average Age	38	39	40
Average Age (Male)	37	38	40
Average Age (Female)	38	39	41

HOUSEHOLDS & INCOME	0.3 MILES	0.5 MILES	1 MILE
Total Households	231	1,147	3,033
# of Persons per HH	2.4	2.3	2.2
Average HH Income	\$45,084	\$50,879	\$50,061
Average House Value	\$119,995	\$127,296	\$154,372

Demographics data derived from AlphaMap



LAND FOR SALE

DEMOGRAPHICS MAP & REPORT

SOUTHEAST COMMERCIAL REAL ESTATE | 2310 19th Street Gulfport, MS 39501 | <https://southeastcre.com>



SOUTHEAST
COMMERCIAL
REAL ESTATE