

Investment Property

Near Eagle Butte Rd. & Tucker Way Ranch Rd.

FOR SALE



COLDWELL BANKER
COMMERCIAL
VALLEY REALTY

Acton, CA 93510



PROPERTY OVERVIEW

Excellent investment opportunity for a future custom home site. This 4.76+/- NET acre property offers access from future Peaceful Valley Rd., views of the surrounding rolling topography and electric running near the West property line. Property is beside other custom homes/ranches in the area and is minutes away from the Freeway and the heart of Acton, CA.

DETAILS

PRICE:	\$72,500
TERMS:	Cash Terms
LOT SIZE:	4.76+/- Ac NET (5.13+/- Ac GROSS)
APN:	3057-006-050
ZONING:	A-2-2
Land Use:	RL5
UTILITIES:	Electric & Phone
LEGAL:	N1/2 W1/2 S1/2 W1/2 N1/2 SW1/4 SEC16 T5N R12W, SBBM

FOR MORE INFORMATION CONTACT:

John Fidyk BRE #02033532
john@cbcvalleyrealty.com
Cell: 661.202.6734

OFFICE
Main 661-948-2644
Fax 661-945-2524

Harvey Holloway BRE #00594721
harvey@cbcvalleyrealty.com
Cell: 661.609.8173

CBCValleyrealty.com

Coldwell Banker Commercial and the Coldwell Banker Commercial Logo are registered service marks licensed to Coldwell Banker Real Estate LLC. Each Office is Independently Owned and Operated.

42402 N. 10th Street West Ste "E"
Lancaster, CA 93534

Investment Property

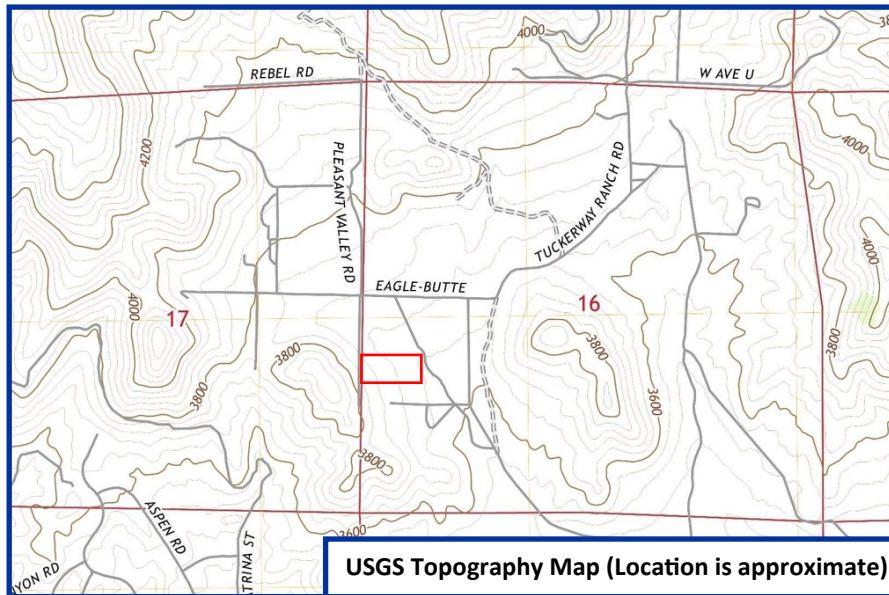
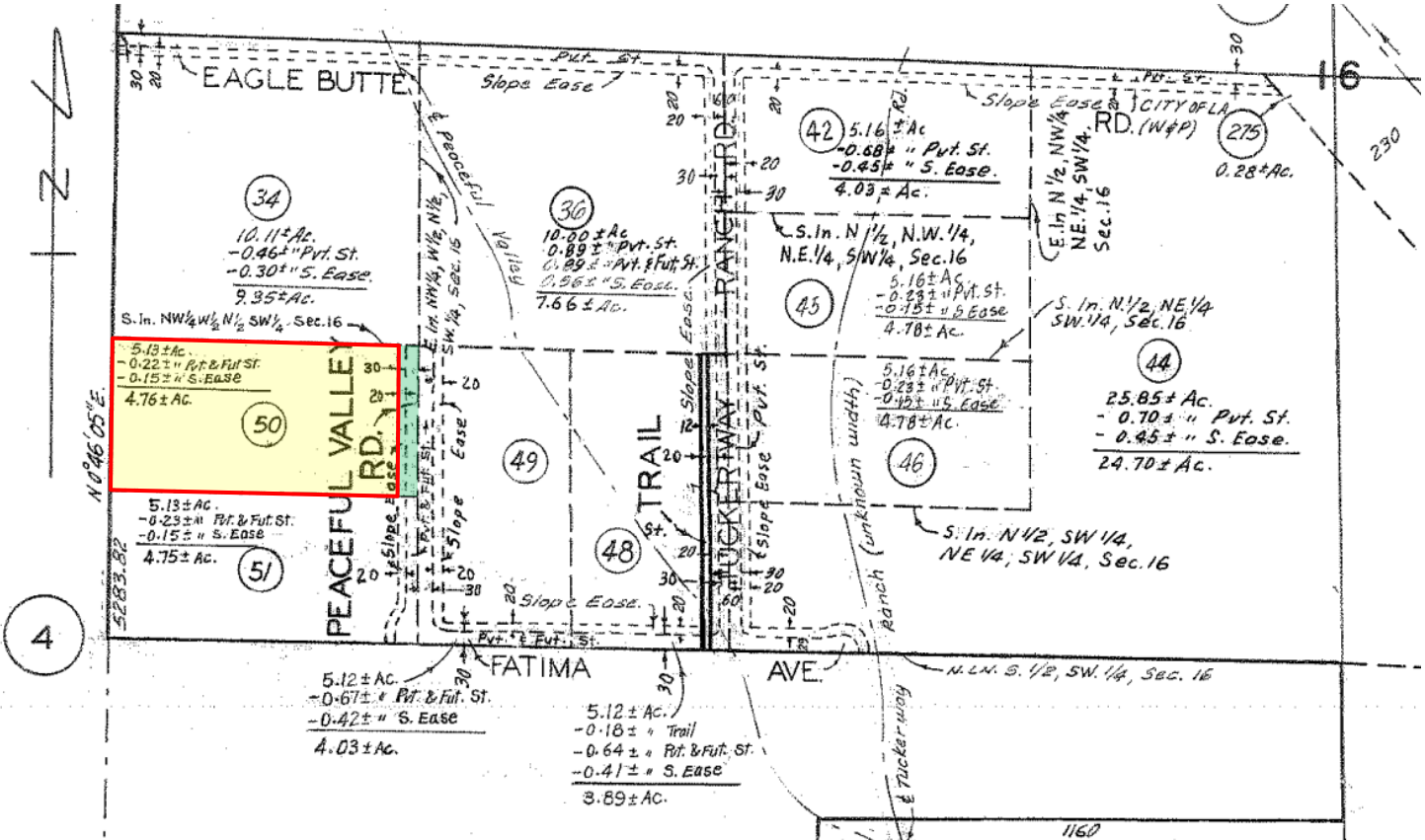
Near Eagle Butte Rd. & Tucker Way Ranch Rd.

FOR SALE



**COLDWELL BANKER
COMMERCIAL**
VALLEY REALTY

Acton, CA 93510



John Fidyk BRE #02033532
 john@cbcvalleyrealty.com
 Cell: 661.202.6734

OFFICE
 Main 661-948-2644
 Fax 661-945-2524

Harvey Holloway BRE #00594721
 harvey@cbcvalleyrealty.com
 Cell: 661.609.8173

CBCValleyrealty.com

Coldwell Banker Commercial and the Coldwell Banker Commercial Logo are registered service marks licensed to Coldwell Banker Real Estate LLC. Each Office is Independently Owned and Operated.

42402 N. 10th Street West Ste "E"
 Lancaster, CA 93534