

GARDEN CITY TOWN CENTER

5838-5940 Middlebelt Road / Garden City, MI



MID-AMERICA[®]
Real Estate-Michigan, Inc.

FOR LEASE



RETAIL OPPORTUNITY

GARDEN CITY TOWN CENTER



Address

5838-5940 Middlebelt Road
Garden City, MI 48135

Availability

1,080 SF
8,973 SF (Divisible)

Features

The Garden City Town Center is located on the busy corner of Ford and Middlebelt Roads in the heart of Garden City, Michigan. This prime location has a large parking field, high traffic counts and is located just outside the busy downtown district.

Join Planet Fitness, O'Reilly Auto Parts, Dollar Tree, and Cato Fashions at the Garden City Town Center which boasts a mix of national, and local tenants.

Co-Tenants



Demographics (2025)

	1 MILE	3 MILES	5 MILES
POPULATION	14,446	135,428	309,301
HOUSEHOLDS	6,297	55,063	127,711
AVG HOUSEHOLD INCOME	\$81,078	\$86,738	\$86,552
DAYTIME POPULATION	11,668	102,756	285,222

GARDEN CITY TOWN CENTER

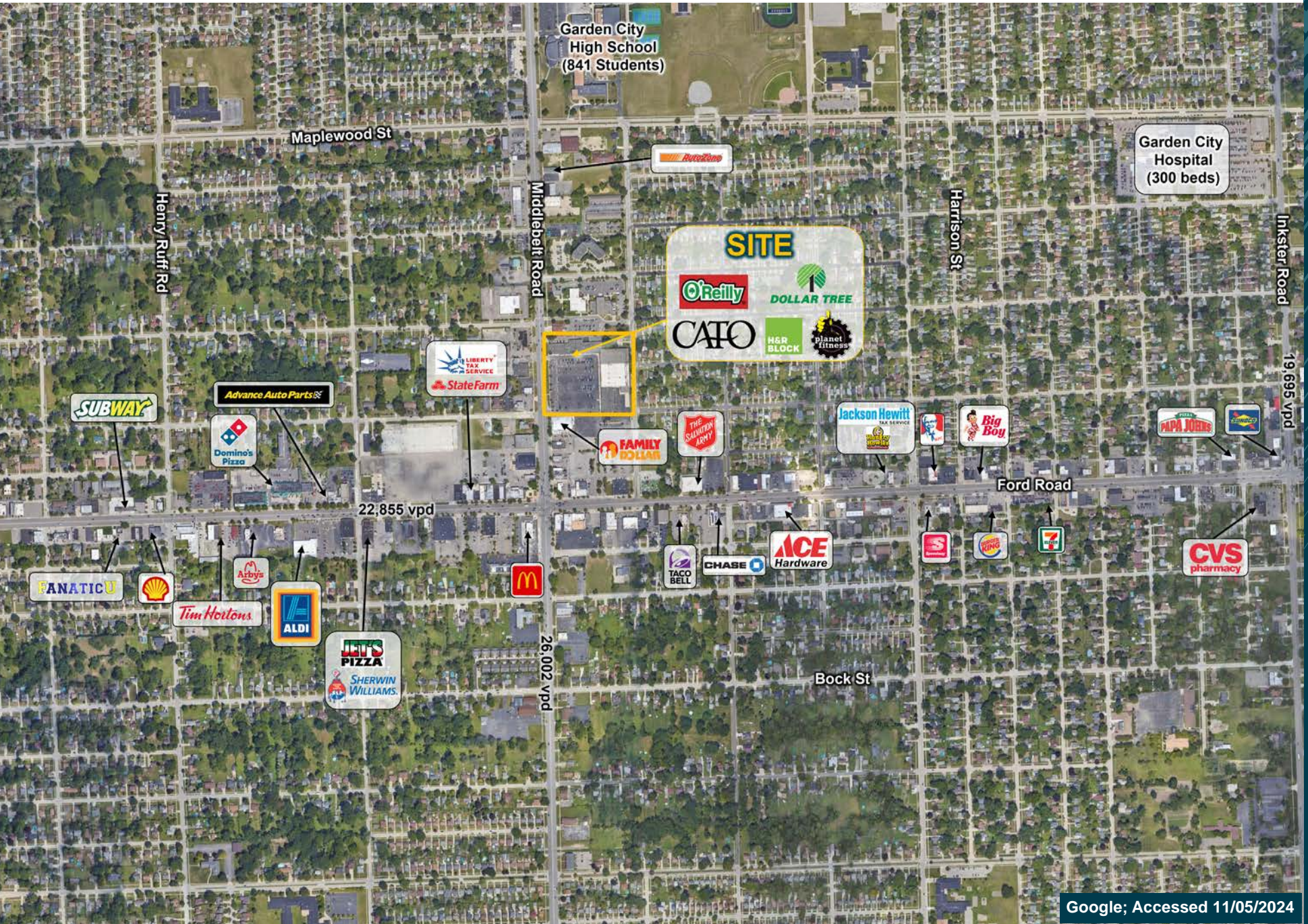


GARDEN CITY TOWN CENTER



BIRDSEYE VIEW

GARDEN CITY TOWN CENTER



GARDEN CITY TOWN CENTER



Jake
Lievois

Mid-America Real Estate -
Michigan, Inc.
T: 248.855.6800
JLievois@MidAmericaGrp.com

George
Sheena

Mid-America Real Estate -
Michigan, Inc.
T: 248.855.6800
GSheena@MidAmericaGrp.com

Eric
Unatin

Mid-America Real Estate -
Michigan, Inc.
T: 248.855.6800
EUnatin@MidAmericaGrp.com



38500 Woodward Ave, Suite 100
Bloomfield Hills, Michigan 48304
248.855.6800
MidAmericaGrp.com

CONTACT