




Colliers



±1,164 SF

For Lease

Ashe Road Business Center  
4300-4600 Ashe Road  
Bakersfield, CA 93313

**Cameron Mahoney**

Senior Vice President | Principal  
License No. 01937802  
+1 661 631 3814  
cameron.mahoney@colliers.com

**Jason Alexander**

Senior Vice President | Principal  
License No. 01360995  
+1 661 631 3818  
jason.alexander@colliers.com

**Colliers International**

10000 Stockdale Hwy, Suite 102  
Bakersfield, CA 93311  
+1 661 631 3800  
www.colliers.com/bakersfield

*Ashe Road Business Center* is located on the northeast corner of Ashe Road and District Boulevard in the heart of the Ashe Road Business Park in Southwest Bakersfield, California. This location provides easy access to Freeway 99, linking Los Angeles to the south and Fresno to the north.

## Features & Amenities

- Ashe Road Business Park is multi-tenant business/industrial park
- M-2 City of Bakersfield Zoning
- 4.90 acre lot
- Concrete tilt-up construction
- High visibility and frontage on both Ashe Road and District Blvd
- 12' x 14' roll-up doors - Available in most units
- Seperate utilities
- Utilities:
  - Water: California Water Company
  - Electric: PG&E
  - Power: 120/208 Volt, 200 Amp, 3 Phase
  - Gas: PG&E
- Professional Property Management





## Availability (APPROX)

Suite 205

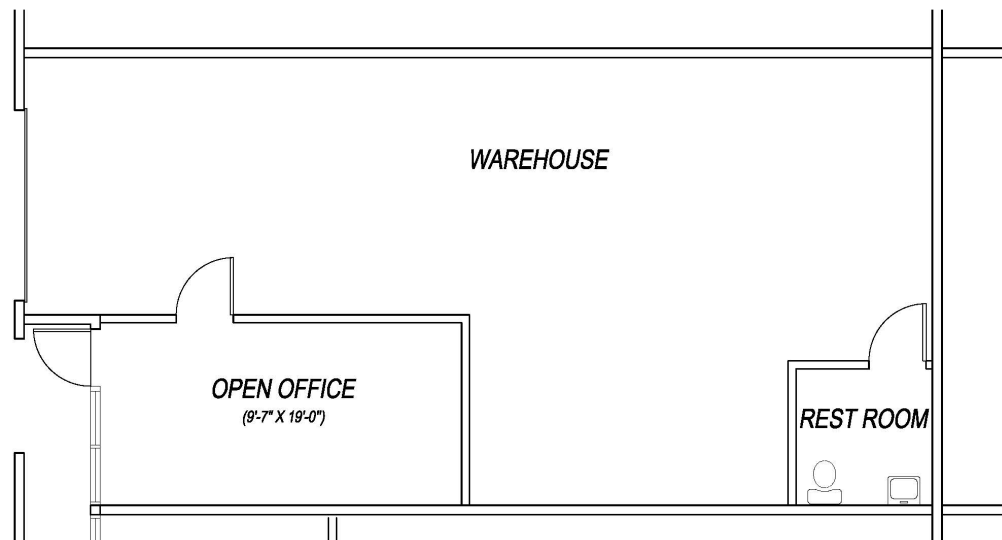
+/- 1,164 SF

## Basic Lease Rate

\$1,200/mo. Industrial Gross - Office/Warehouse

# Floor Plan

Suite 205  
+/- 1,164 SF  
Available



Floor Plan not to scale



## Availability (APPROX)

Suite 207

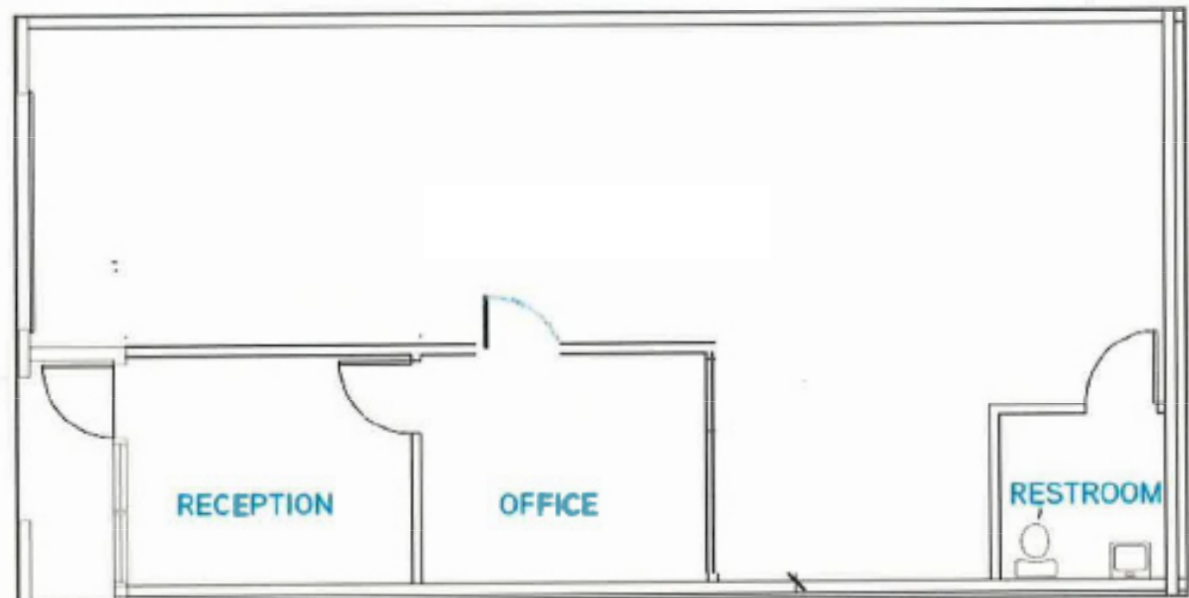
+/- 1,164 SF

## Basic Lease Rate

\$1,200/mo. Industrial Gross - Office/Warehouse

## Floor Plan

Suite 207  
+/- 1,164 SF  
Available



Floor Plan not to scale

# Site Plan



SITE PLAN NOT TO SCALE

White Lane

# Nearby services



Fed Ex Freight



Michael Flooring



Ewing Irrigation



Hansen's Moving



Panama Buena Vista School District



U-Haul Moving & Storage



Schirra Court



Ashe Road



Ashe Road Business Center



District Blvd

The Colliers logo consists of the word "Colliers" in a white serif font, centered within a white rounded rectangle. Below the rectangle are three horizontal stripes in red, yellow, and blue from top to bottom.

10000 Stockdale Hwy, Suite 102  
Bakersfield, CA 93311  
P: +1 661 631 3800  
F: +1 661 631 3829  
[colliers.com/bakersfield](http://colliers.com/bakersfield)

**Cameron Mahoney**

Senior Vice President | Principal  
License No. 01937802  
+1 661 631 3814  
[cameron.mahoney@colliers.com](mailto:cameron.mahoney@colliers.com)

**Jason Alexander**

Senior Vice President | Principal  
License No. 01360995  
+1 661 631 3818  
[jason.alexander@colliers.com](mailto:jason.alexander@colliers.com)

This document has been prepared by Colliers International for advertising and general information only. Colliers International makes no guarantees, representations or warranties of any kind, expressed or implied, regarding the information including, but not limited to, warranties of content, accuracy and reliability. Any interested party should undertake their own inquiries as to the accuracy of the information. Colliers International excludes unequivocally all inferred or implied terms, conditions and warranties arising out of this document and excludes all liability for loss and damages arising there from. This publication is the copyrighted property of Colliers International and/or its licensor(s). ©2026. All rights reserved.