



For Sublease

Central Place

Suite 412 – 4370 Dominion Street, Burnaby, BC



1,670 sf of premium office space
for sublease in a highly accessible
Burnaby office complex

Glenn Gardner*, Principal
604 647 5092
glenn.gardner@avisonyoung.com
*Glenn Gardner Personal Real Estate Corporation

Stephanie Yeargin, Associate Vice President
604 757 4985
stephanie.yeargin@avisonyoung.com

Office space for sublease

Central Place
Suite 412 – 4370 Dominion Street, Burnaby, BC

PROPERTY DETAILS

SIZE
1,670 sf

SUBLEASE EXPIRY
September 29, 2027

NET RENT
Please contact listing agents

ADDITIONAL RENT
\$21.93 psf (2025 est.)

AVAILABLE
Immediately

LOCATION

Ideally positioned in Burnaby, Central Place offers exceptional connectivity and accessibility throughout Metro Vancouver. The property is strategically located near both Trans-Canada Highway and Willingdon Avenue, ensuring seamless access to Vancouver, New Westminster and Coquitlam. With Gilmore and Brentwood Town Centre SkyTrain stations just minutes away, commuting is effortless via two major transit lines. This modern, well-maintained office building features a recently upgraded common area with high-quality finishes and is conveniently located across from the Grand Villa Casino Hotel & Conference Centre, providing access to a wide variety of amenities and dining options.

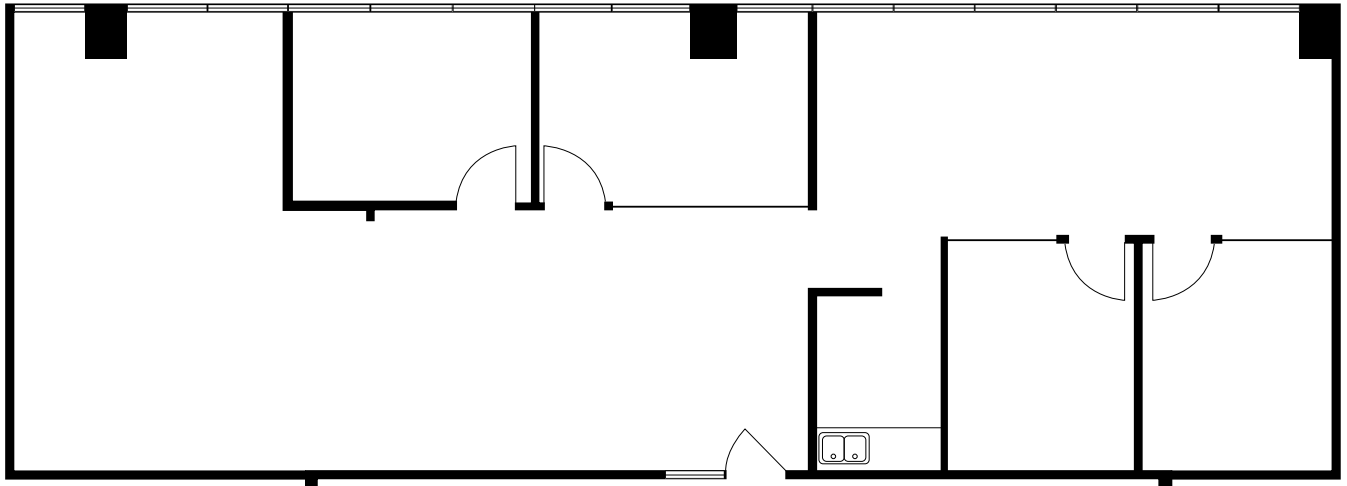


BUILDING FEATURES

- Proximity to Gilmore and Brentwood Town Centre SkyTrain stations
- Ample parking
- Bike storage
- End-of-trip facilities
- Recently updated common areas
- 24-hour access



FLOOR PLAN



SUITE HIGHLIGHTS

- Partially furnished
- Three (3) offices
- One (1) meeting room
- Kitchenette
- Open area
- Direct elevator exposure



Nearby amenities

- | | | |
|-----------------------------|---|---------------------------|
| 1. The Keg Steakhouse + Bar | 6. Taste of Splendour Cafe & Catering | 11. Whole Foods Market |
| 2. McDonald's | 7. Grand Villa Casino Hotel & Conference Centre | 12. Cactus Club Cafe |
| 3. Costco Wholesale | 8. Personas Patio Restaurant And Lounge | 13. OEB Breakfast Co. |
| 4. The Between Cafe | 9. Tim Hortons | 14. Brentwood Town Centre |
| 5. Prado Cafe | 10. JOEY Burnaby | |

Contact for more information

Glenn Gardner*, Principal
604 647 5092
glenn.gardner@avisonyoung.com

*Glenn Gardner Personal Real Estate Corporation

Stephanie Yeargin, Associate Vice President
604 757 4985
stephanie.yeargin@avisonyoung.com

#2900-1055 West Georgia Street
P.O. Box 11109 Royal Centre
Vancouver, BC V6E 3P3, Canada

avisonyoung.ca

**AVISON
YOUNG**

**BEST
MANAGED
COMPANIES**
Platinum member