

+/- 1.12 AC Commercial Land | Gatlin Blvd, Port St. Lucie, FL



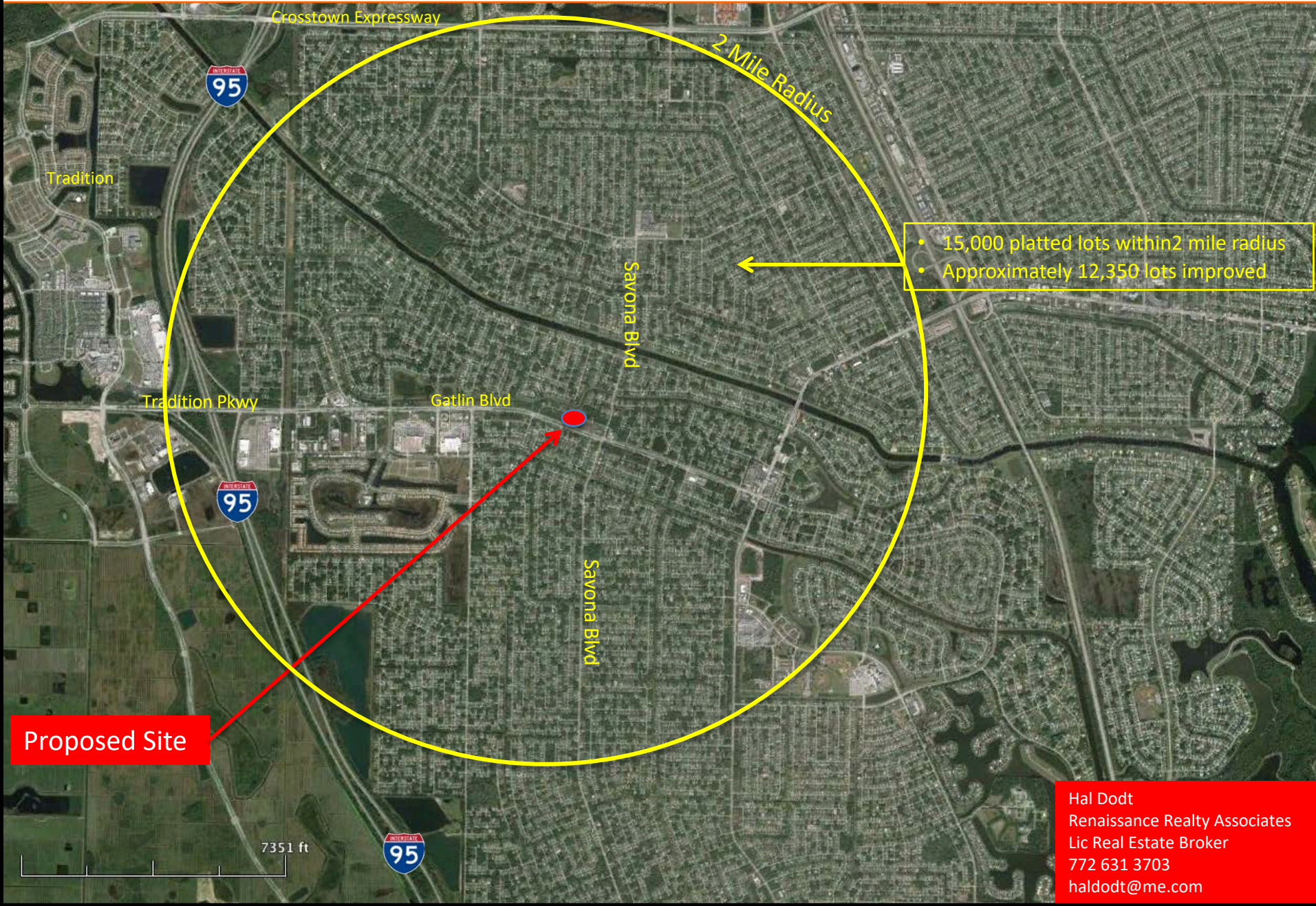
- > Outparcel near Super Walmart and Sam's
- > LMD or CG zoning potential for retail, office, or medical
- > Rapidly growing Port St. Lucie, FL
- > Immediate access to I-95
- > Daily traffic count of 50,500 on Gatlin Blvd

Contact Us
Hal Dodt
Renaissance Realty Associates Lic. Real Estate Broker
772 631 3703
haldodt@me.com

Close-up Site View of +/- 1.12 AC Commercial Land | Gatlin Blvd, Port St. Lucie, FL



Gatlin Commons Aerial View | NWC of Bougainvillea & SW Gatlin Blvd, Port St. Lucie, FL



Hal Dodt
Renaissance Realty Associates
Lic Real Estate Broker
772 631 3703
haldodt@me.com

Market Area View Looking Northeast and Background on Tradition



Proposed Site

15,000 Lots and 12,350 Homes Inside
2 Mile Radius of Tradition Pkwy and Rosser Blvd

Tradition Pkwy AADT 50,500

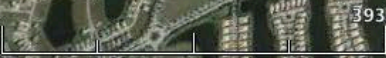
Tradition Home Builders:
 Mattamy
 DelWebb
 Horton
 Minto
 Pulte
 Atlantic
 G/L Homes

City Electric
 Grand Palms
 (600 du)

Springs at
 Tradition (304 du)

Tradition & Western Annexation Area:
 I-95 to Range Line Road, 24,000 Acres
 (50,000 Planned Dwelling Units)

Hal Dodt
 Renaissance Realty Associates
 Lic Real Estate Broker
 772 631 3703
 haldodt@me.com



SW Waterway Ln
 SW Community Blvd
 3938 ft