

**NEWLY RENOVATED LOBBIES
AND COMMON AMENITIES!**



HURSTBOURNE

PARK & PLACE

9200 & 9300 Shelbyville Road, Louisville, Kentucky



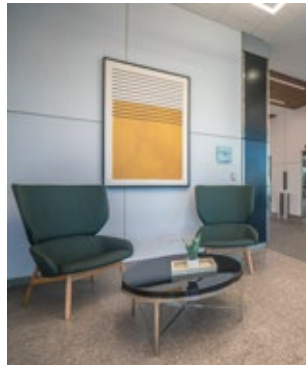
CLASS A OFFICE SPACE AVAILABLE FOR LEASE IN A
HIGHLY VISIBLE LANDMARK LOCATION

ALBANY ROAD
REAL ESTATE PARTNERS

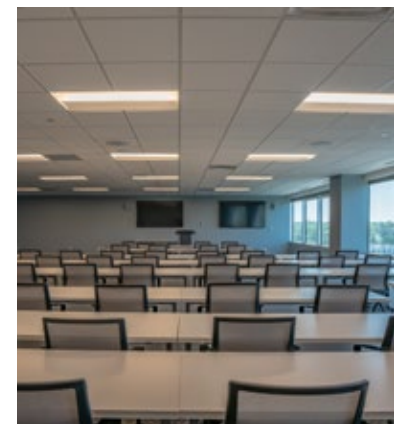
CBRE



Renovated common tenant lounge & Cube Café (grab & go options)



Newly updated lobbies



THE OPPORTUNITIES

HURSTBOURNE PARK - 9200 SHELBYVILLE RD



8-story, Class A
mid-rise building

105,931 SF

Large, 13,200 SF
floorplates

Floor to ceiling
windows

SUITES	SIZE
102	1,996 SF
421	4,914 SF
525	5,693 SF
531	3,481 SF
700	13,353 SF



HURSTBOURNE PLACE - 9300 SHELBYVILLE RD



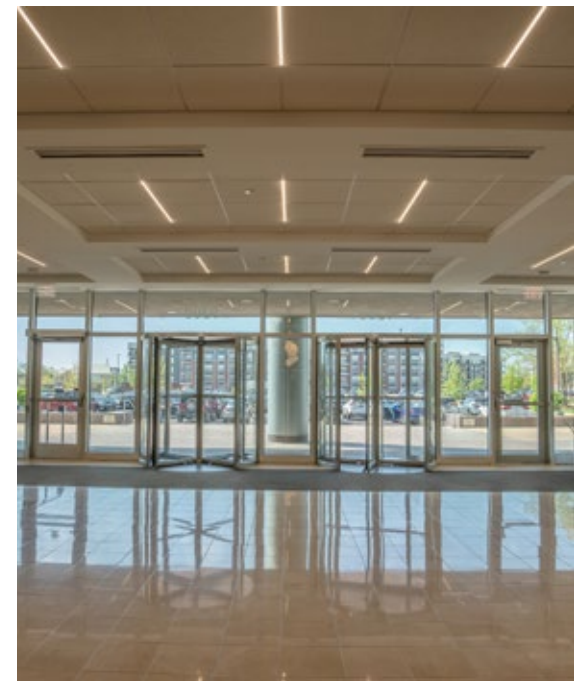
13-story, Class A
mid-rise building

237,904 SF

Large, 18,300 SF
floorplates

Tallest building in
the Hurstbourne/
Lyndon office submarket

SUITES	SIZE
205	3,221 SF
403	3,117 SF
505	2,672 SF
506	2,309 SF
603	1,527 SF
910	6,361 SF
1205	2,453 SF
1206	1,720 SF
1250	1,540 SF



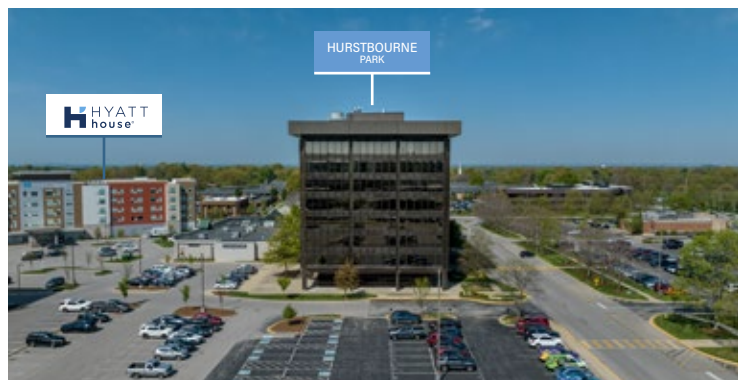
IDEALLY SITUATED WITHIN HURSTBOURNE'S PREMIER LIFESTYLE DESTINATION



Ample parking



Adjacent to the newly-constructed Rialto Hurstbourne apartments



Adjacent to the newly-opened Hyatt House



Just steps to the adjacent Hurstbourne Town Center retail, including Shred415 fitness, CoreLife Eatery, Heine Brothers' Coffee, Del Frisco's Steakhouse, P.F. Chang's, and City Barbeque



Refreshed landscaping



**Convenient
access to
I-64, I-71, I-265,
and I-264**



**Updated
HVAC system**



**Elevator
modernization
underway**

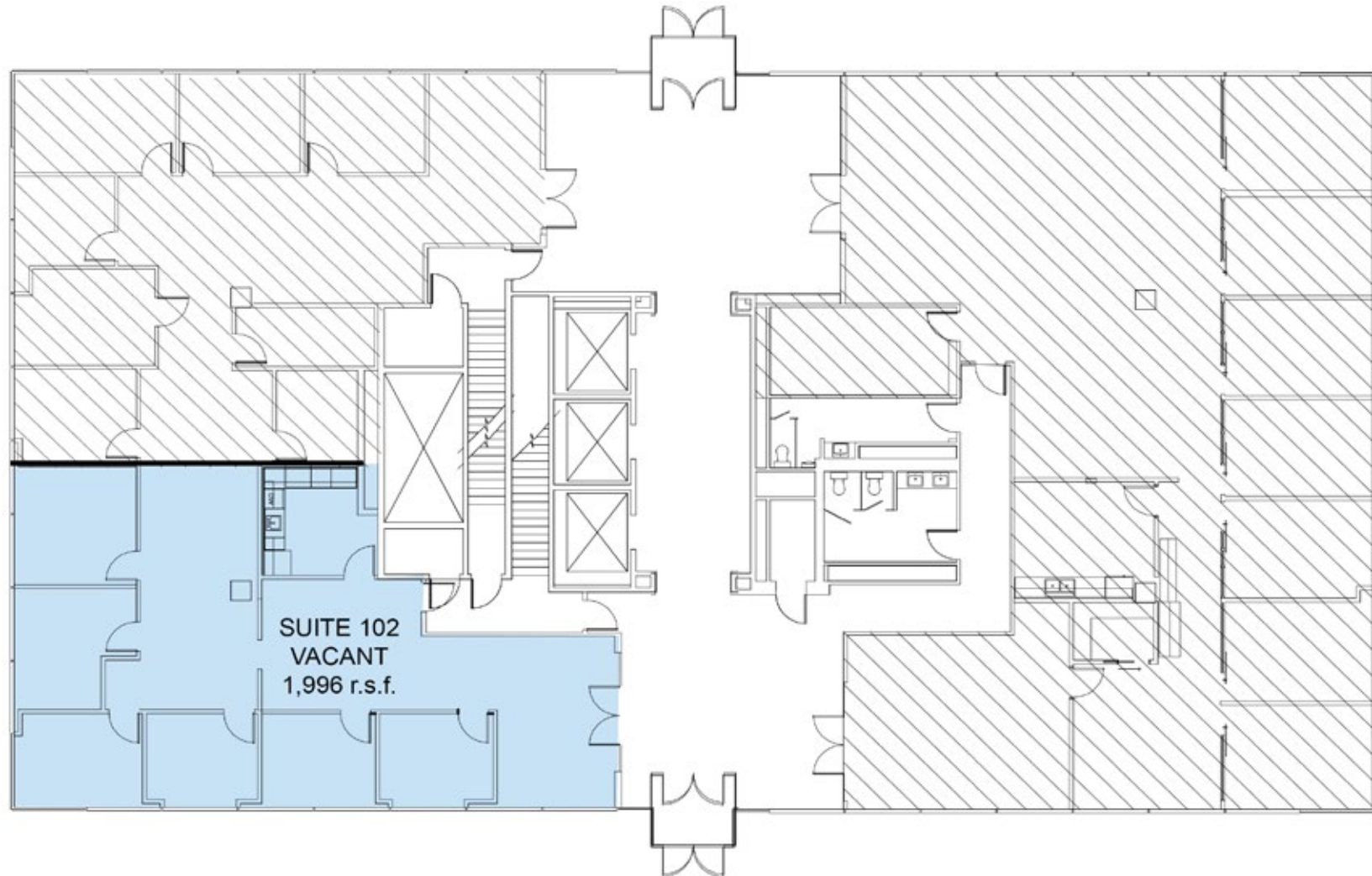


**On-site
property
management**



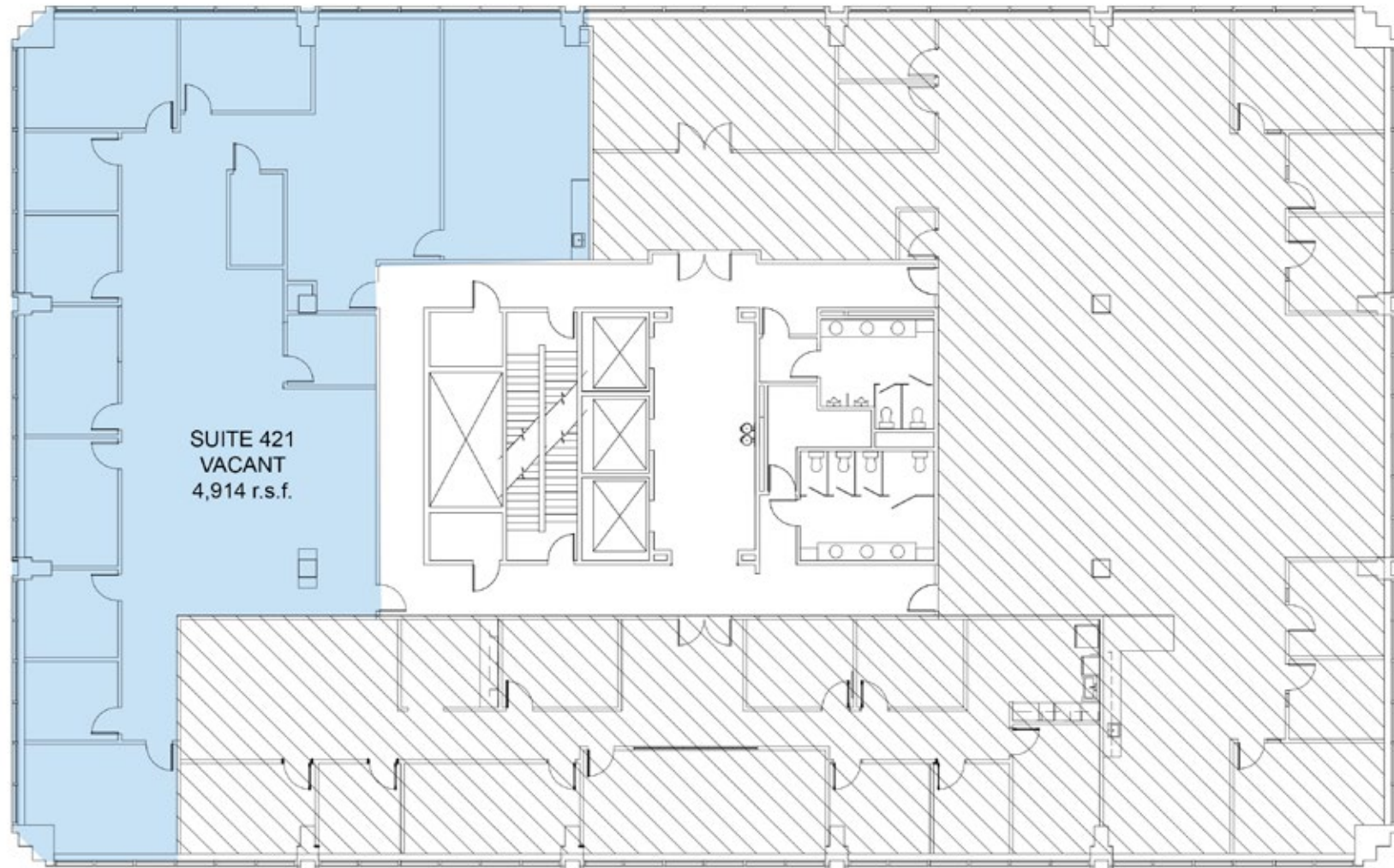
HURSTBOURNE PARK – FLOOR 1

9200 SHELBYVILLE RD



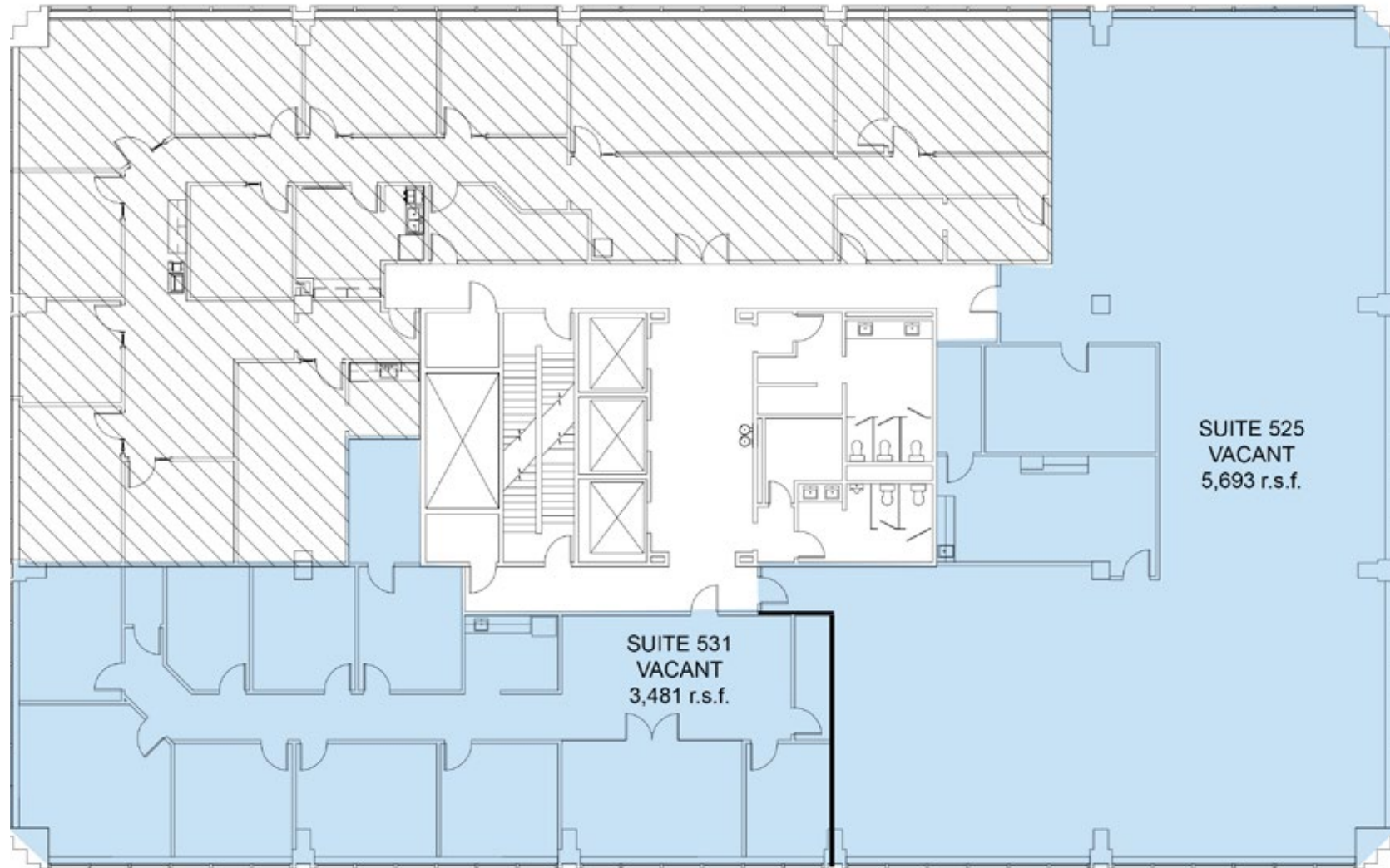
HURSTBOURNE PARK – FLOOR 4

9200 SHELBYVILLE RD



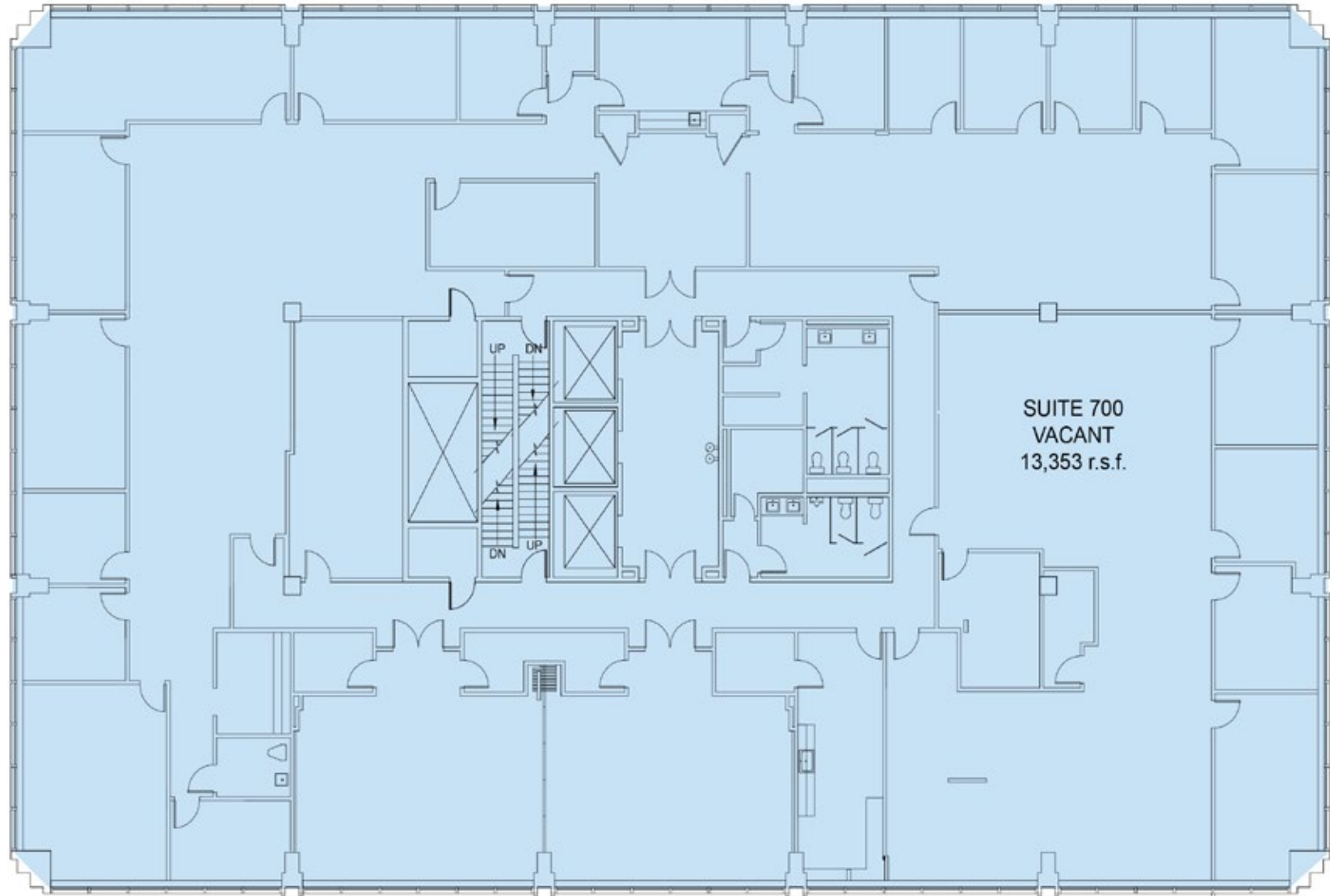
HURSTBOURNE PARK – FLOOR 5

9200 SHELBYVILLE RD



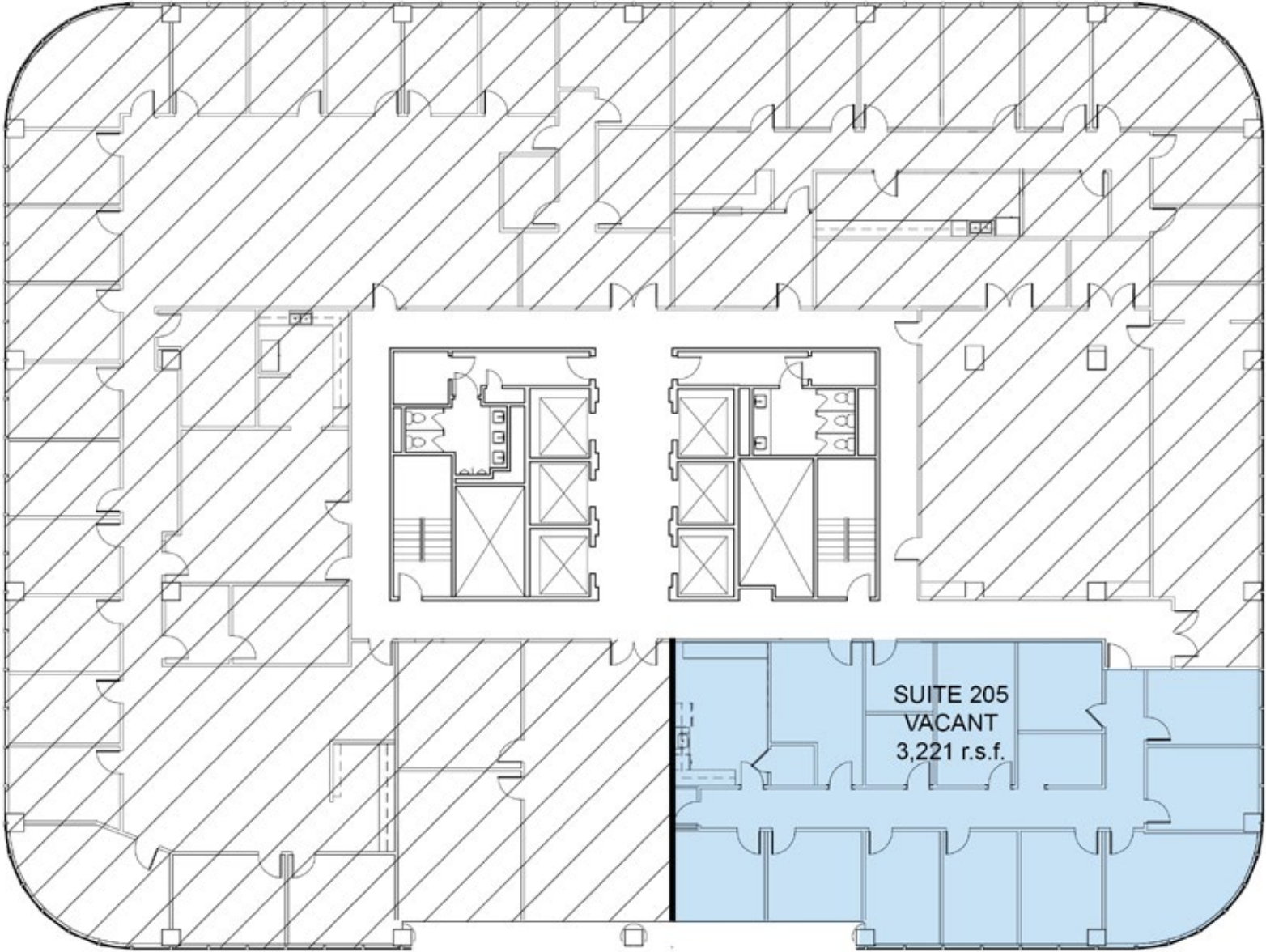
HURSTBOURNE PARK – FLOOR 7

9200 SHELBYVILLE RD



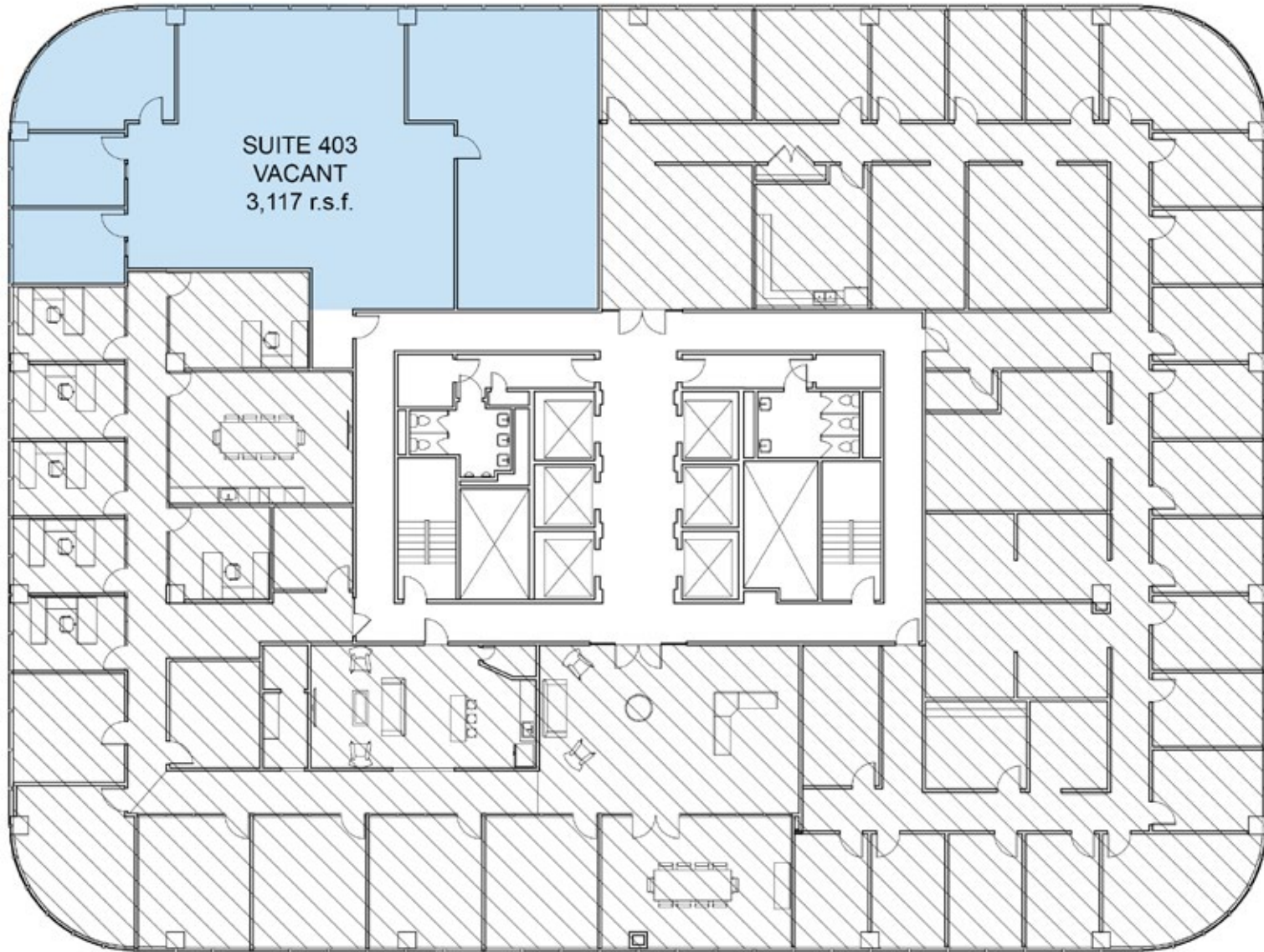
HURSTBOURNE PLACE – FLOOR 2

9300 SHELBYVILLE RD



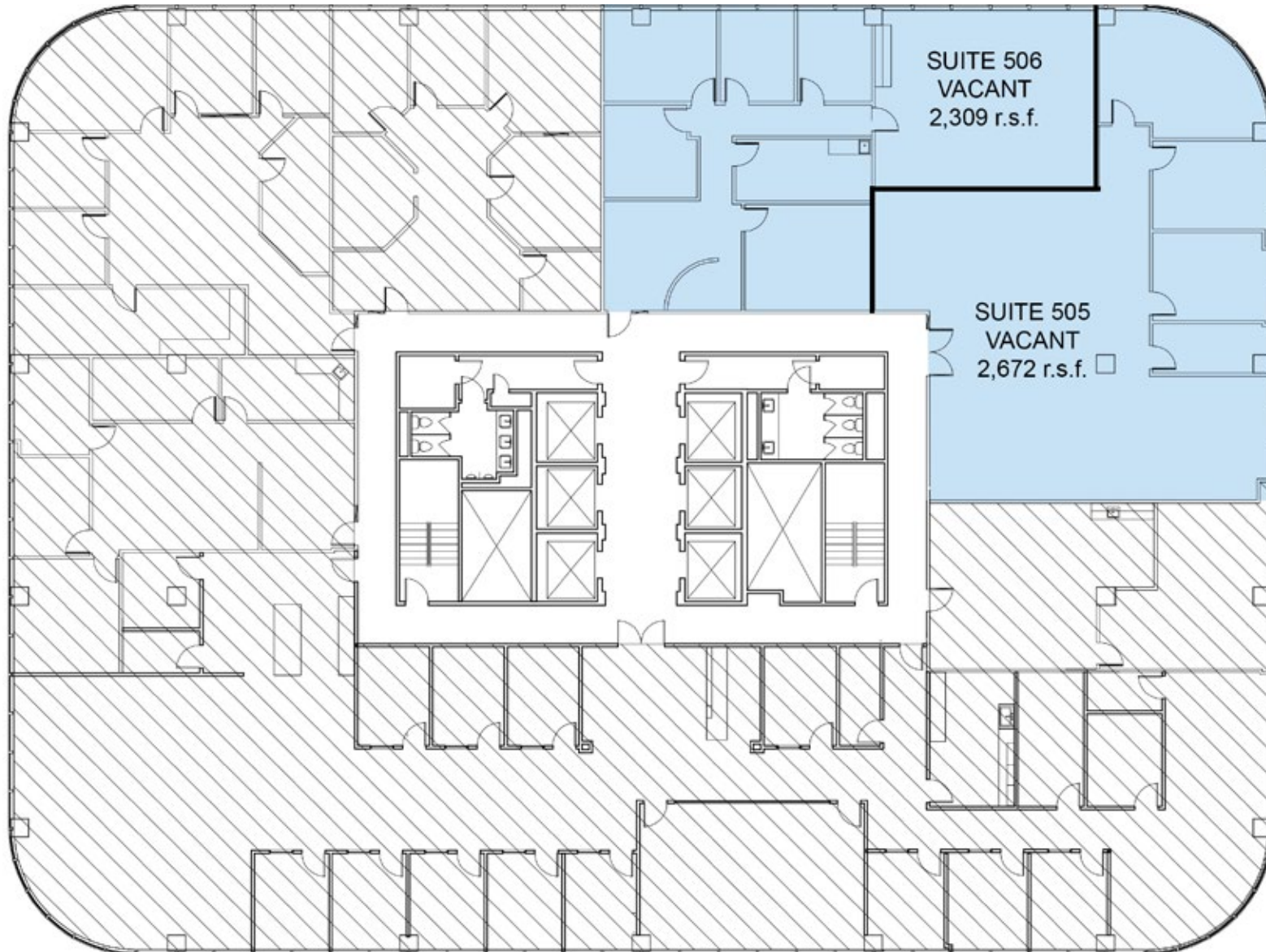
HURSTBOURNE PLACE – FLOOR 4

9300 SHELBYVILLE RD



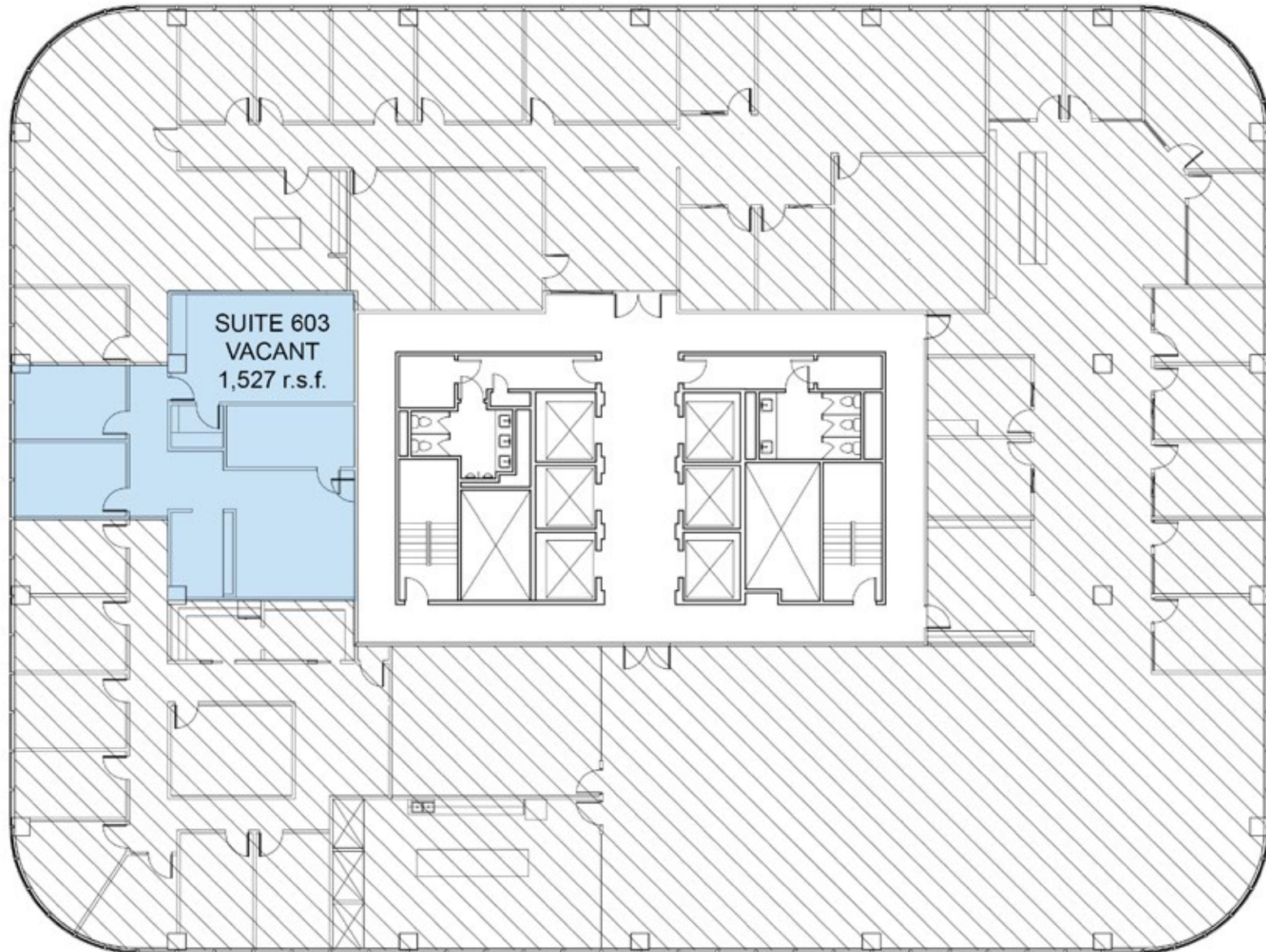
HURSTBOURNE PLACE – FLOOR 5

9300 SHELBYVILLE RD



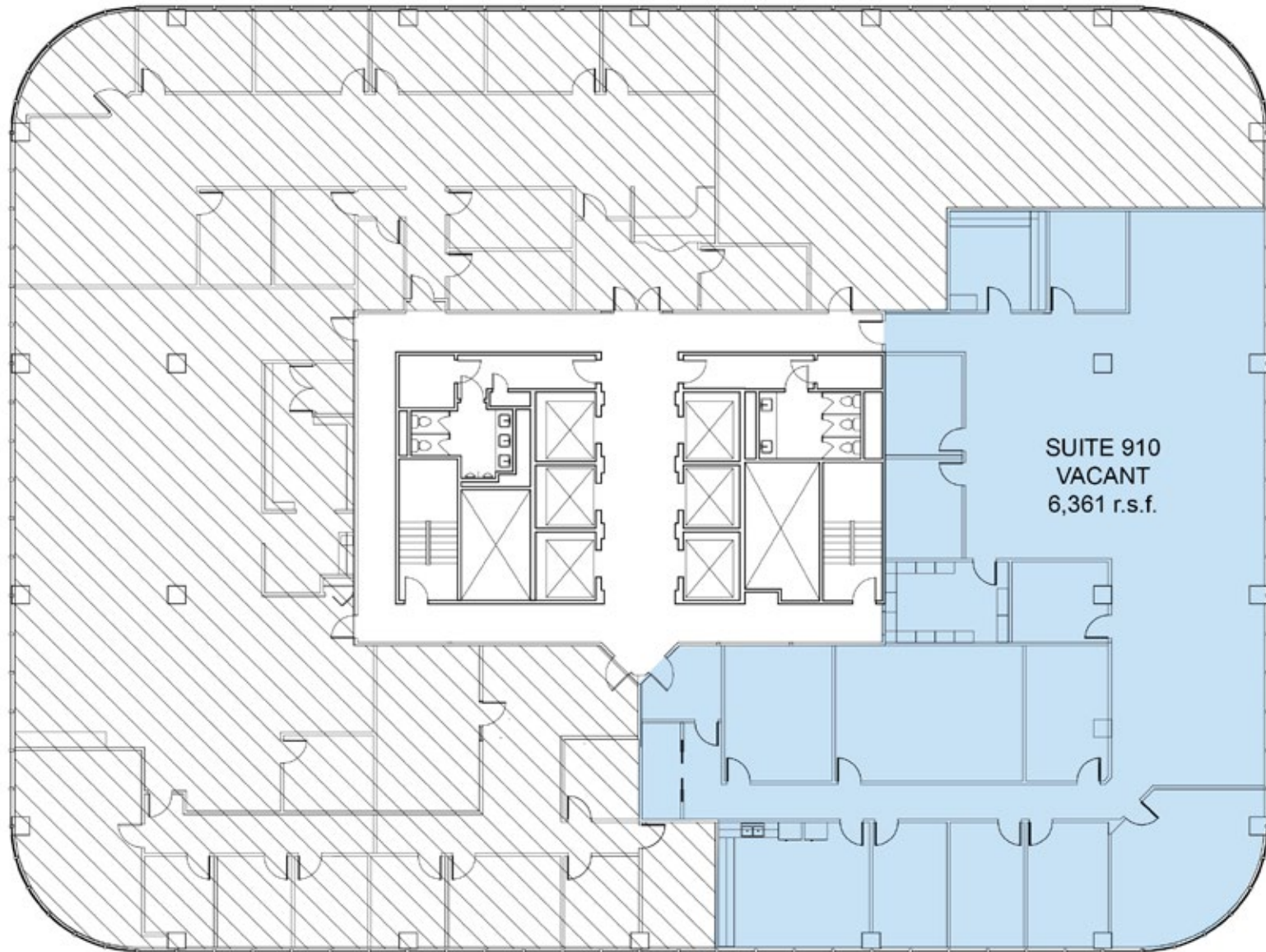
HURSTBOURNE PLACE – FLOOR 6

9300 SHELBYVILLE RD



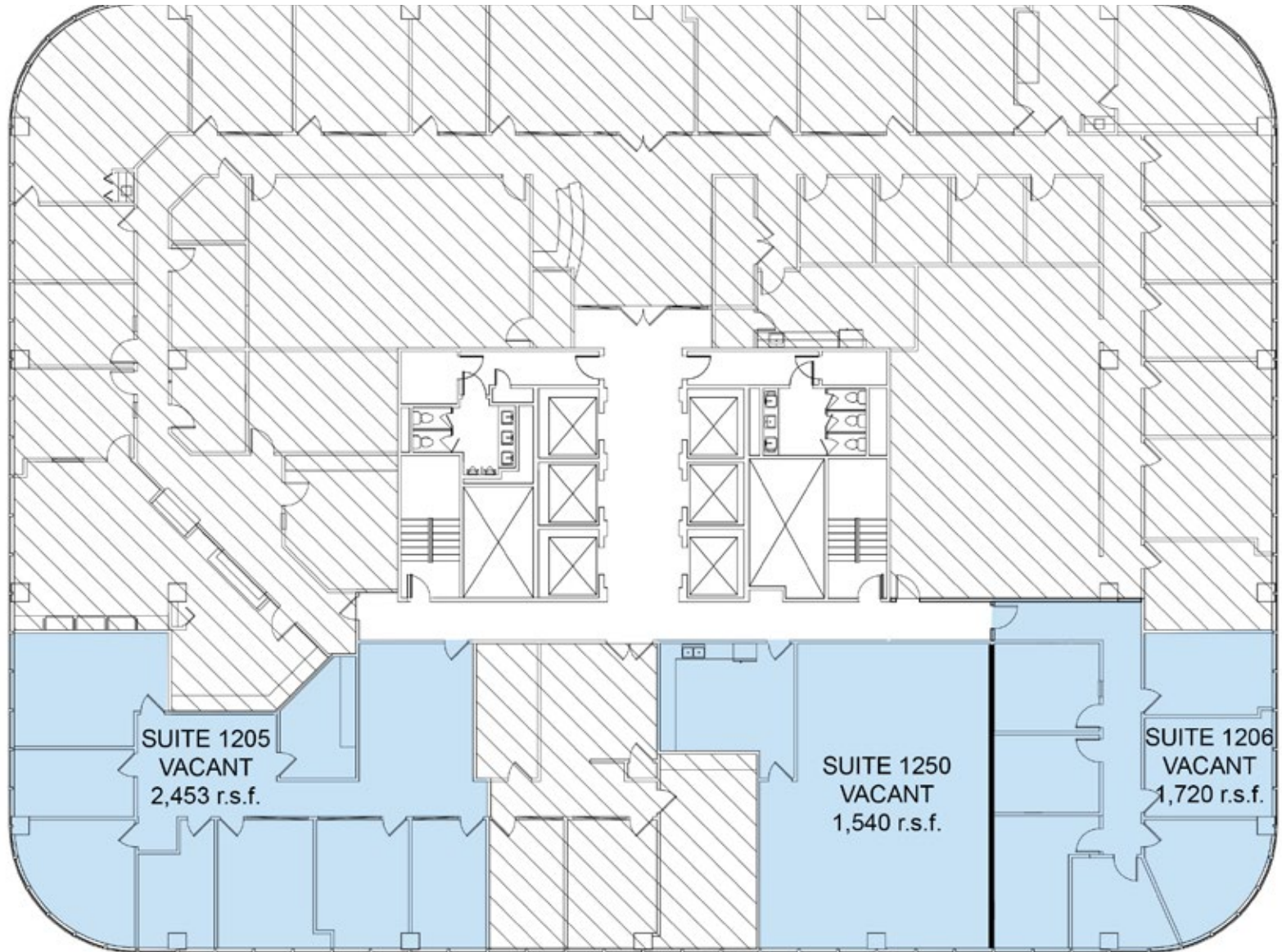
HURSTBOURNE PLACE – FLOOR 9

9300 SHELBYVILLE RD



HURSTBOURNE PLACE – FLOOR 12

9300 SHELBYVILLE RD



CONTACT

Rick Ashton, CCIM
Senior Vice President
+1 502 939 5018
rick.ashton@cbre.com

Jeff Dreher, SIOR
Senior Vice President
+1 502 291 7560
jeff.dreher@cbre.com

ALBANY ROAD

REAL ESTATE PARTNERS

CBRE



HURSTBOURNE
PARK & PLACE

© 2025 CBRE, Inc. All rights reserved. This information has been obtained from sources believed reliable but has not been verified for accuracy or completeness. CBRE, Inc. makes no guarantee, representation or warranty and accepts no responsibility or liability as to the accuracy, completeness, or reliability of the information contained herein. You should conduct a careful, independent investigation of the property and verify all information. Any reliance on this information is solely at your own risk. CBRE and the CBRE logo are service marks of CBRE, Inc. All other marks displayed on this document are the property of their respective owners, and the use of such marks does not imply any affiliation with or endorsement of CBRE. Photos herein are the property of their respective owners. Use of these images without the express written consent of the owner is prohibited. PMStudio_May2024