

**AVAILABLE
FOR LEASE**

BDO 267 AT BUSINESS DEPOT OGDEN
267 Depot Drive | Ogden, UT



BUILDING SPECS

96,154 square feet

Available 1/1/27

Cross dock warehouse

16 dock high doors

1 grade level door

54'10" x 40' column spacing

60' speed bays

30' clear

BUSINESS DEPOT OGDEN

14,000,000 total SF

1,118 acres

PROXIMITY

40 minutes to Salt Lake City and
the SLC International Airport

1 mile from I-15

RENTAL RATE

Call for more details

Business Depot Ogden (BDO) is a 1,118-acre master planned business park with 250 build-to-suit available acres. BDO has 7.6 million square feet of new construction, 6,500,000 existing square feet and 500,000 square feet of available space. BDO, formerly a military installation, has been transformed into a business and industrial park and is a vibrant, growing park that has undergone significant changes since the transfer to Ogden City in 1997. BDO has more than 14 million square feet of industrial and office space.

CONTACT

Cameron Cook

801.399.9885 Office

ccook@boyer.com



BUSINESS DEPOT
Ogden

www.boyerbdo.com

**AVAILABLE
FOR LEASE**

— Photos —

BDO 267 AT BUSINESS DEPOT OGDEN
267 Depot Drive | Ogden, UT



CONTACT

Cameron Cook
801.399.9885 Office
ccook@boyer.com



BUSINESS DEPOT
Ogden

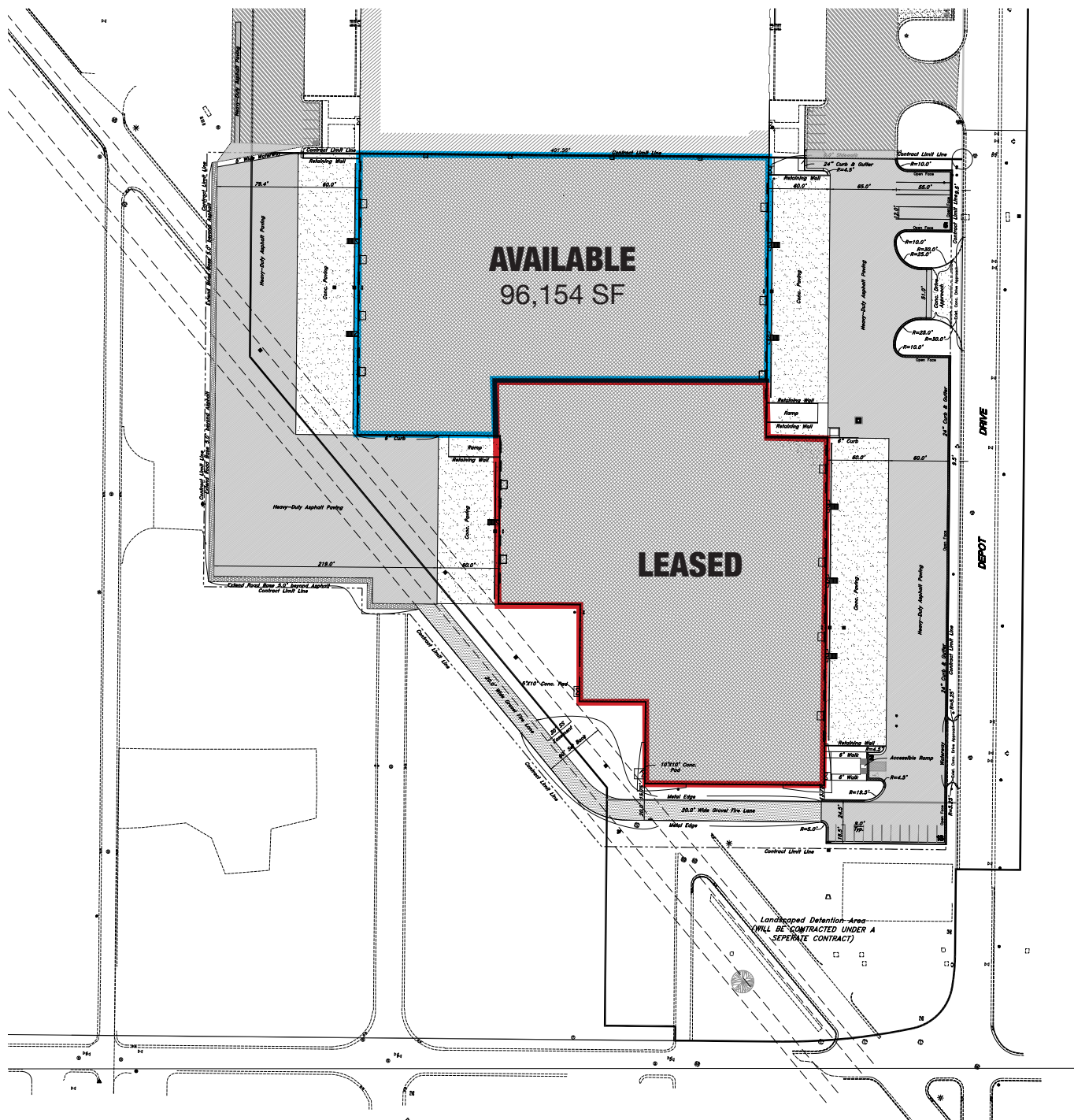
www.boyerbdo.com

AVAILABLE FOR LEASE

— Site Plan —

BDO 267 AT BUSINESS DEPOT OGDEN

267 Depot Drive | Ogden, UT



CONTACT

Cameron Cook
801.399.9885 Office
ccook@boyer.com



BUSINESS DEPOT
Ogden

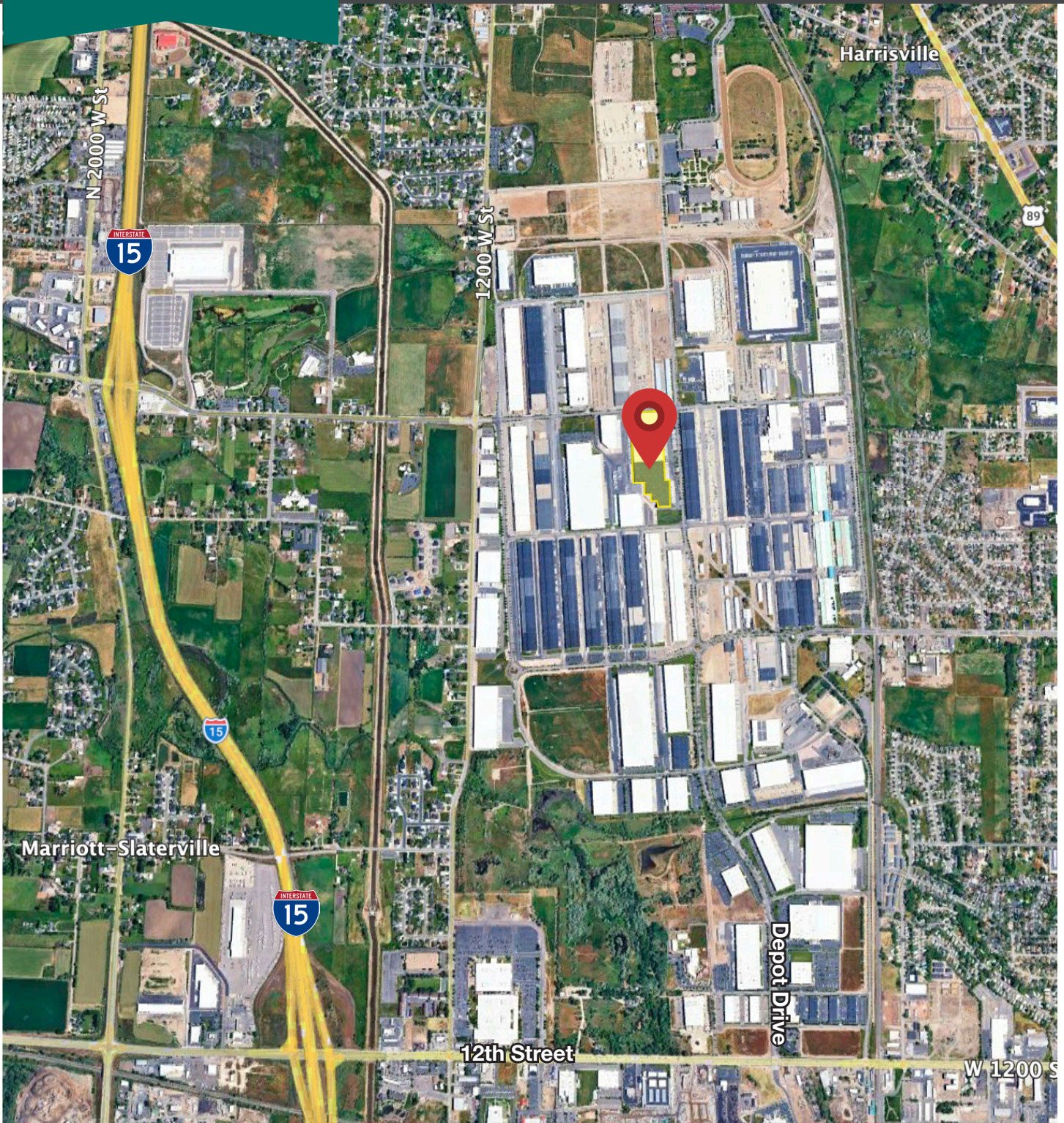
www.boyerbdo.com

AVAILABLE FOR LEASE

— Surrounding Area —

BDO 267 AT BUSINESS DEPOT OGDEN

267 Depot Drive | Ogden, UT



CONTACT

Cameron Cook
801.399.9885 Office
ccook@boyer.com



BUSINESS DEPOT
Ogden

www.boyerbdo.com