

# SOUTHSIDE BUILDING FOR SALE

## WITH OFFSTREET PARKING LOT

1317 EAST CARSON STREET, SOUTHSIDE, PITTSBURGH, PA 15203

PRICE REDUCED:  
**\$1,600,000**



## OFFERING FEATURES:

- 20,100 SF Building For Sale with 0.11 acre off-street parking lot included
- Price Reduced: ~~\$1,800,000~~ \$1,600,000
- Unique historic opportunity in Pittsburgh's South Side
- 40' of frontage along East Carson Street
- East Carson Street traffic counts: 12,237 ADT
- Zoning: Local Neighborhood Commercial
- Operational Freight Elevator
- High Ceilings

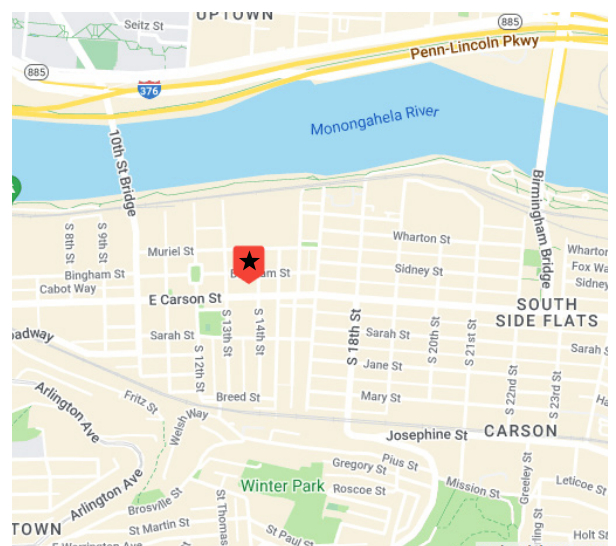
### CONTACT:

**AJ PANTONI**

ajpantoni@hannalwe.com

724 316 5327

[HANNALWE.COM](http://HANNALWE.COM)



All information furnished regarding property for sale, rental or financing is from sources deemed reliable. No representation is made as to the accuracy thereof, and it is submitted subject to errors, omissions, change of price, rental, or other conditions, prior sale lease, financing or withdrawal without notice. Hanna Langholz Wilson Ellis will make no representation, and assume no obligation, regarding the presence or absence of toxic or hazardous waste or substances or other undesirable material on or about the property.

# SOUTHSIDE BUILDING FOR SALE

1317 EAST CARSON STREET, SOUTHSIDE, PITTSBURGH, PA 15203



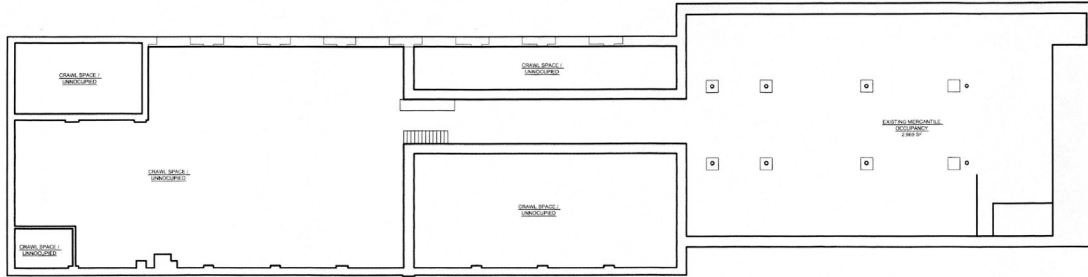
CONTACT:  
**AJ PANTONI**  
ajpantoni@hannalwe.com  
724 316 5327  
[HANNALWE.COM](http://HANNALWE.COM)

All information furnished regarding property for sale, rental or financing is from sources deemed reliable. No representation is made as to the accuracy thereof, and it is submitted subject to errors, omissions, change of price, rental, or other conditions, prior sale lease, financing or withdrawal without notice. Hanna Langholz Wilson Ellis will make no representation, and assume no obligation, regarding the presence or absence of toxic or hazardous waste or substances or other undesirable material on or about the property.

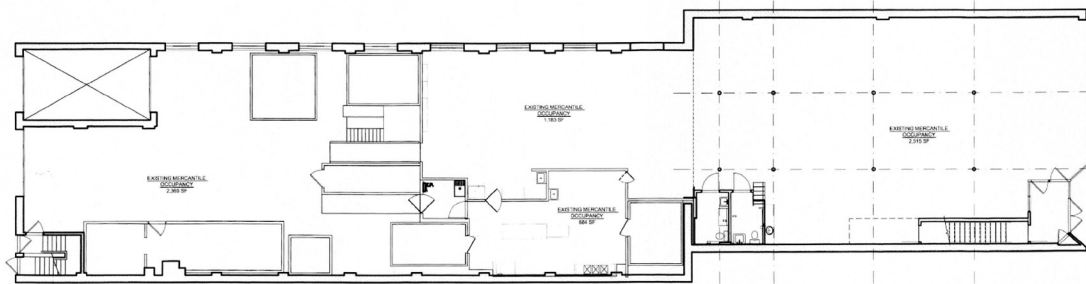


# SOUTHSIDE BUILDING FOR SALE

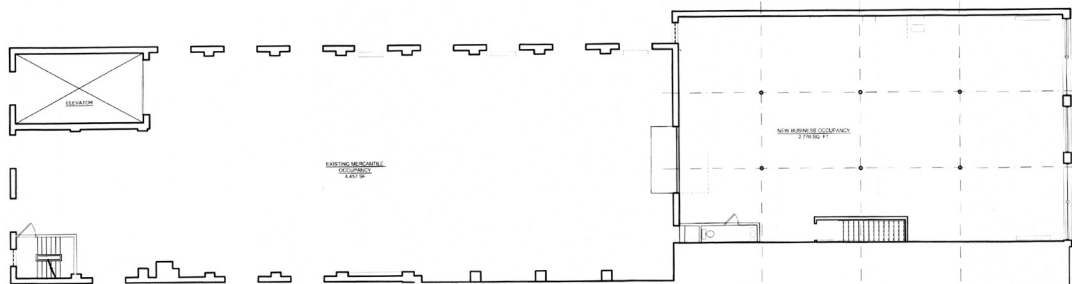
1317 EAST CARSON STREET, SOUTHSIDE, PITTSBURGH, PA 15203



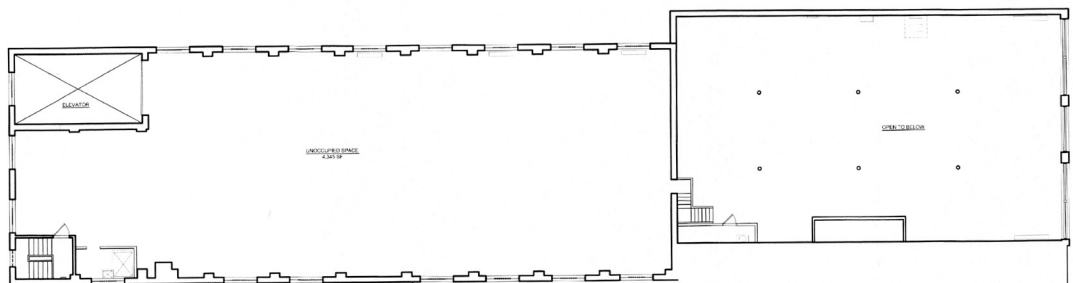
1 EXIST. BASEMENT PLAN  
EC1 SCALE: 1/8" = 1'-0"



2 EXIST. FIRST FLOOR PLAN  
EC1 SCALE: 1/8" = 1'-0"



1 EXIST. 2ND FLOOR PLAN  
EC2 SCALE: 1/8" = 1'-0"



2 EXIST. 3RD FLOOR PLAN  
EC2 SCALE: 1/8" = 1'-0"

## CONTACT:

**AJ PANTONI**

ajpantoni@hannalwe.com

724 316 5327

[HANNALWE.COM](http://HANNALWE.COM)

All information furnished regarding property for sale, rental or financing is from sources deemed reliable. No representation is made as to the accuracy thereof, and it is submitted subject to errors, omissions, change of price, rental, or other conditions, prior sale lease, financing or withdrawal without notice. Hanna Langholz Wilson Ellis will make no representation, and assume no obligation, regarding the presence or absence of toxic or hazardous waste or substances or other undesirable material on or about the property.



# SOUTHSIDE BUILDING FOR SALE

1317 EAST CARSON STREET, SOUTHSIDE, PITTSBURGH, PA 15203



CONTACT:  
**AJ PANTONI**  
ajpantoni@hannalwe.com  
724 316 5327  
[HANNALWE.COM](http://HANNALWE.COM)



All information furnished regarding property for sale, rental or financing is from sources deemed reliable. No representation is made as to the accuracy thereof, and it is submitted subject to errors, omissions, change of price, rental, or other conditions, prior sale lease, financing or withdrawal without notice. Hanna Langholz Wilson Ellis will make no representation, and assume no obligation, regarding the presence or absence of toxic or hazardous waste or substances or other undesirable material on or about the property.