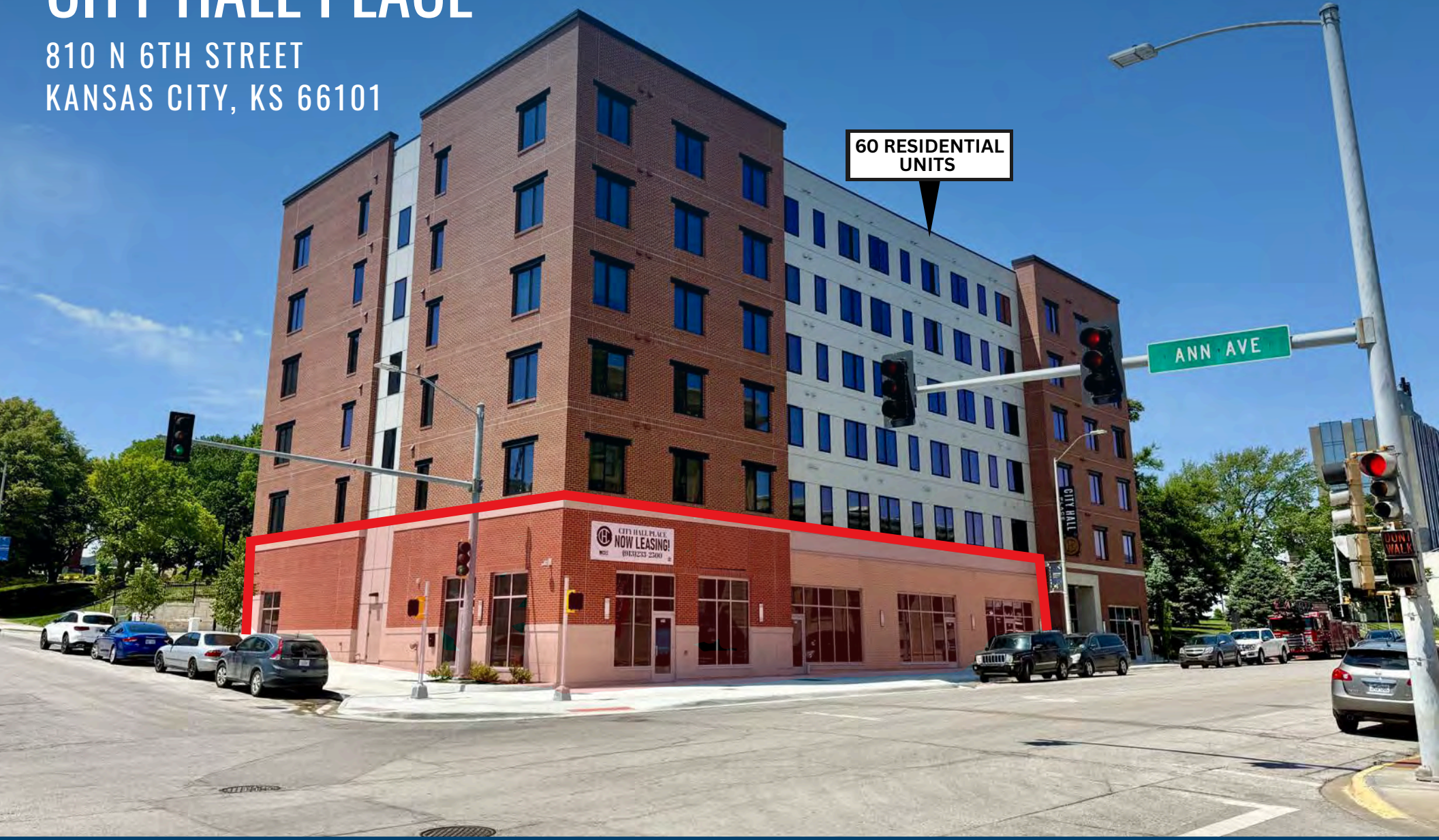


RETAIL FOR LEASE:



CITY HALL PLACE

810 N 6TH STREET
KANSAS CITY, KS 66101



60 RESIDENTIAL
UNITS



WYATT PALMER
ASSOCIATE

 (913) 230-3100
 WPALMER@PEAKREP.COM

PHILLIP CLEMENTE
ASSOCIATE

 (913) 808-8543
 PHILLIP@PEAKREP.COM

PROPERTY HIGHLIGHTS

CITY HALL PLACE | 810 N 6TH STREET | KANSAS CITY, KS 66101

- **Property Highlights:**
- **Suite A: 2,028 SF Endcap**
- **Suite B: 1,311 SF**
- **Suite C: 1,111 SF**
- **Suite D: 605 SF**
- **Can be combined for 5,055 usable SF**
- New 2026 construction located in the charming Strawberry Hill neighborhood of Kansas City, Kansas.
- Ground-floor retail opportunity apart of a 104-unit residential community
- Easy access to I-70, minutes from downtown Kansas City
- Quoting: \$24/psf + NNNs
- City grants available for small businesses



NEW
CONSTRUCTION



GROUND FLOOR RETAIL
AVAILABLE



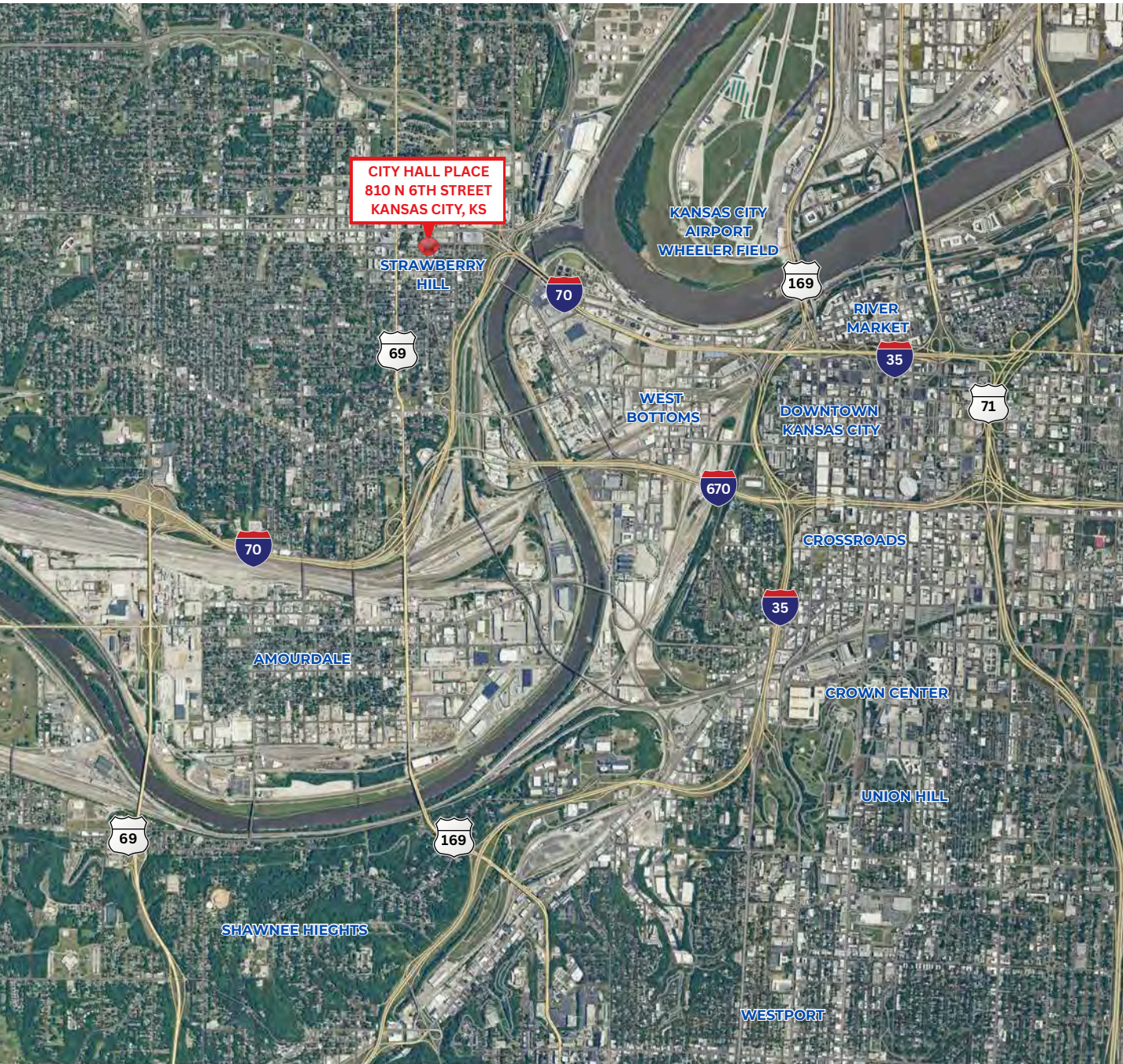
HIGHWAY ACCESS
TO I-70



LOCATED IN
STRAWBERRY HILL

PROPERTY AERIAL

CITY HALL PLACE | 810 N 6TH STREET | KANSAS CITY, KS 66101



POPULATION

1-MILE	12,811
3-MILE	74,332
5-MILE	196,123



DAYTIME POPULATION

1-MILE	12,327
3-MILE	107,035
5-MILE	233,465



AVERAGE HOUSEHOLD INCOME

1-MILE	\$50,711
3-MILE	\$80,519
5-MILE	\$81,055

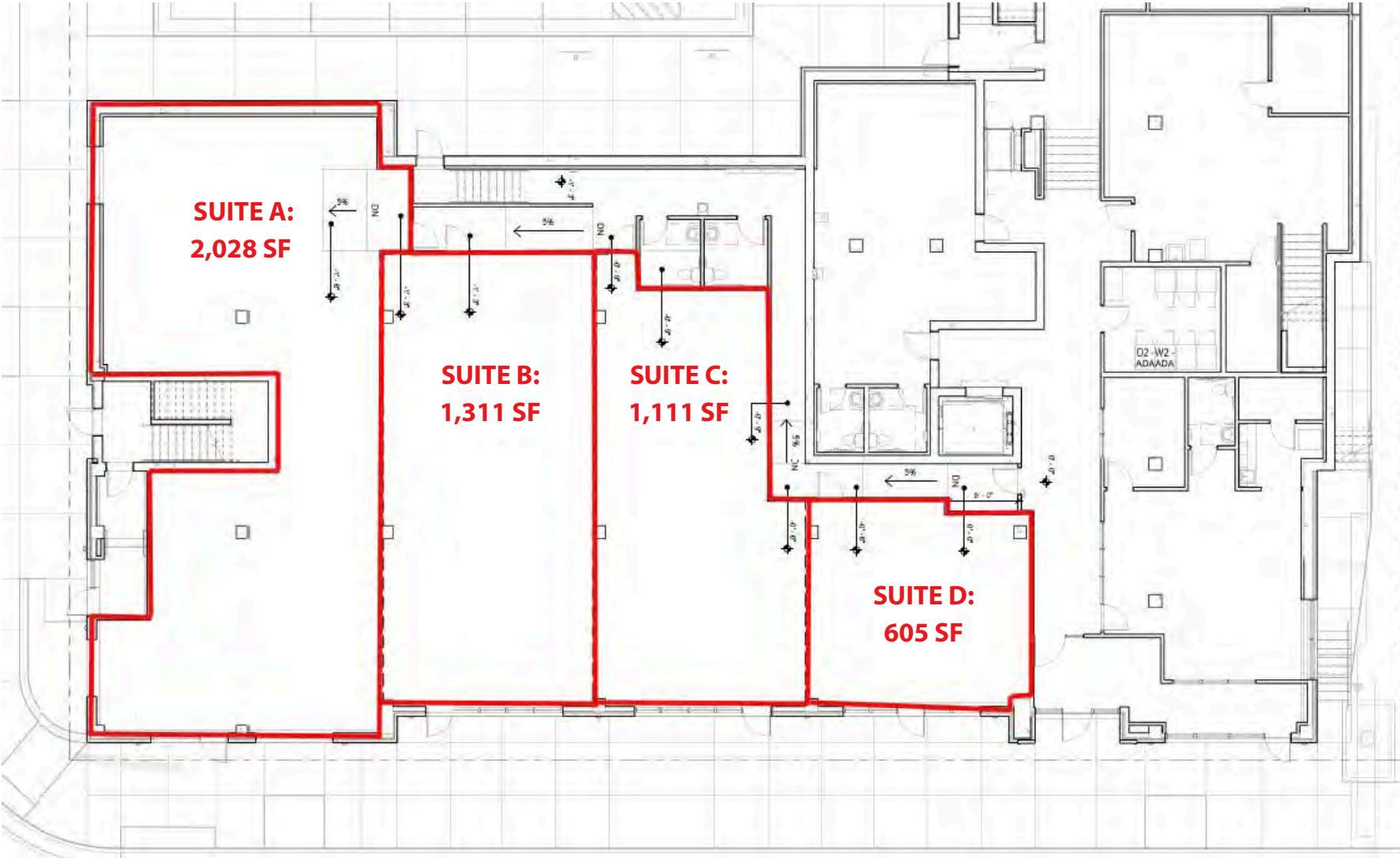
PROPERTY AERIAL

CITY HALL PLACE | 810 N 6TH STREET | KANSAS CITY, KS 66101



FLOOR PLAN

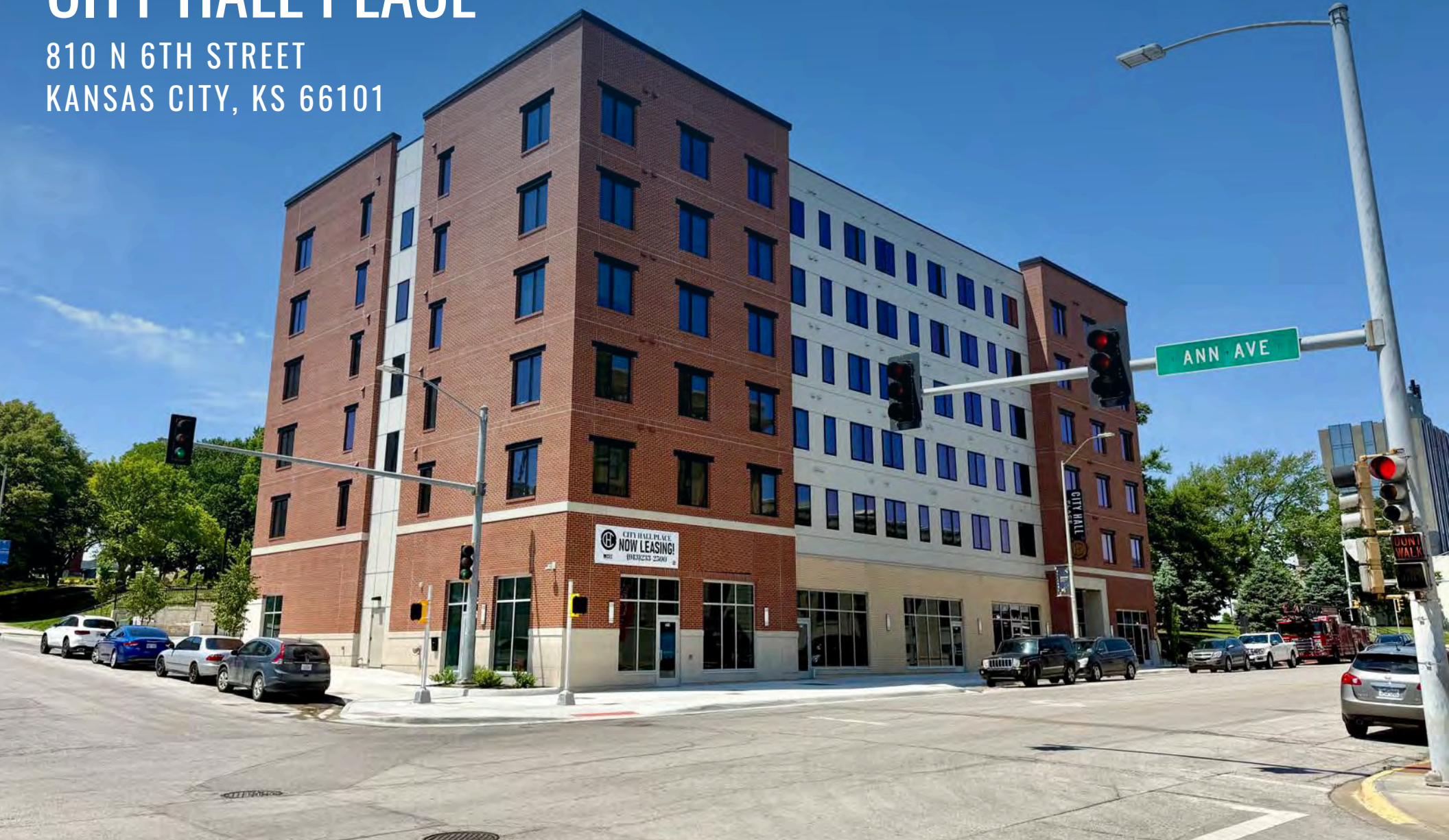
CITY HALL PLACE | 810 N 6TH STREET | KANSAS CITY, KS 66101



RETAIL FOR LEASE:

CITY HALL PLACE

810 N 6TH STREET
KANSAS CITY, KS 66101



WYATT PALMER
ASSOCIATE



(913) 230-3100



WPALMER@PEAKREP.COM

PHILLIP CLEMENTE
ASSOCIATE



(913) 808-8543



PHILLIP@PEAKREP.COM