



 **COMMERCE  
CENTER**

I-49 AND 155TH STREET, KANSAS CITY, MO  
VERTICAL READY SITES FOR BUILD-TO-SUIT

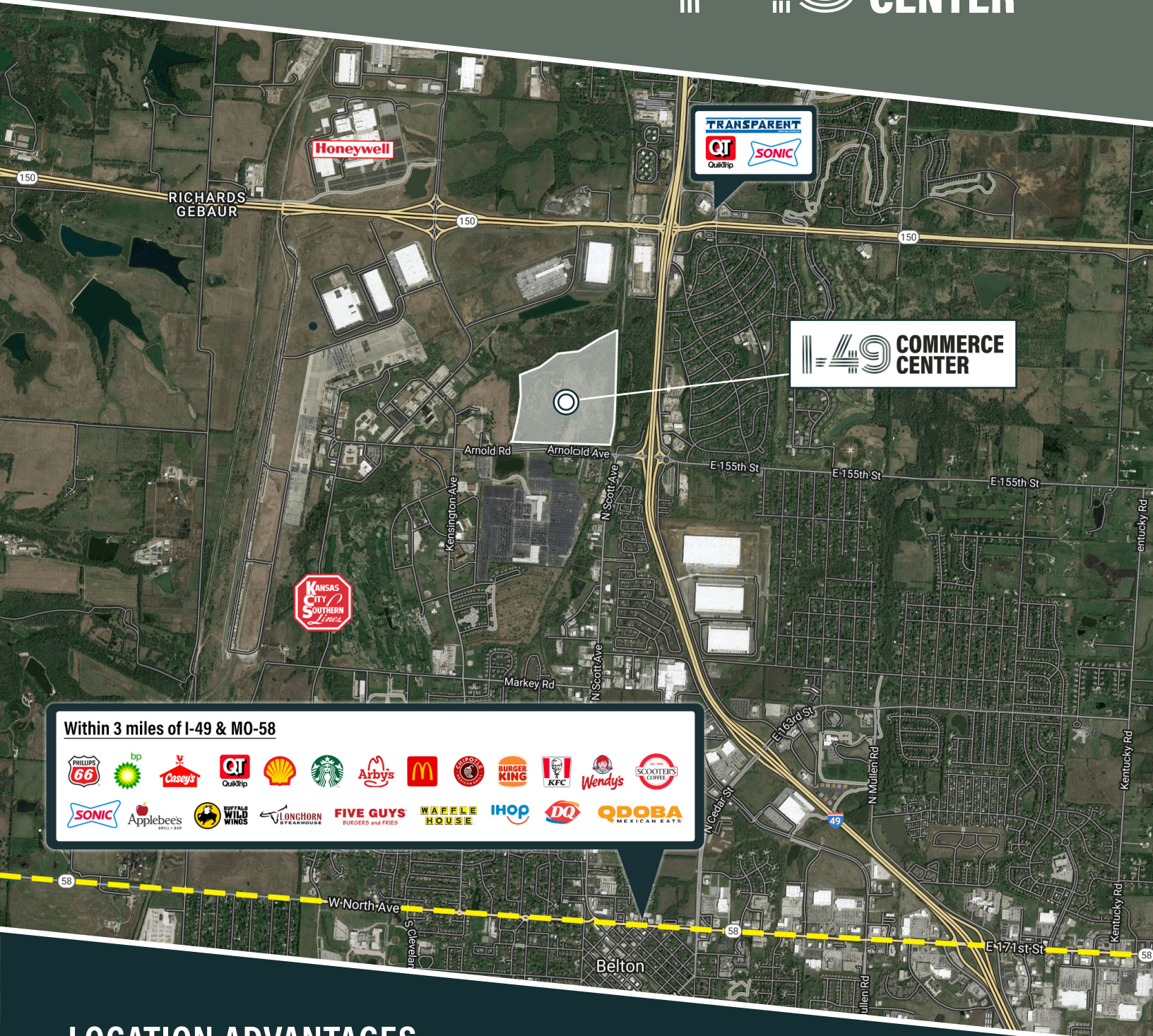
150 ACRE PARK PLANNED TO ACCOMMODATE 200,000 – 550,000+ SF

**NEWMARK**  
ZIMMER

Mark C. Long  
816-512-1011  
mlong@nzimmer.com

John F. Hassler  
816-268-4208  
jhassler@nzimmer.com

# STRATEGIC SITE LOCATION



## LOCATION ADVANTAGES



Abundant highly skilled labor pool



I-49 Interstate access via new interchange at 155th Street



Business friendly



Real estate tax pilot in place which significantly reduces operating costs



**SITE FEATURES**



Master planned  
industrial park  
immediately ready  
for construction



Sites able to  
accommodate  
a wide range of  
building sizes



Industrial zoned  
sites with  
potential for a  
variety of uses



Experienced landlord  
and developer  
offering civil and  
architectural services