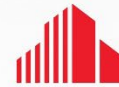


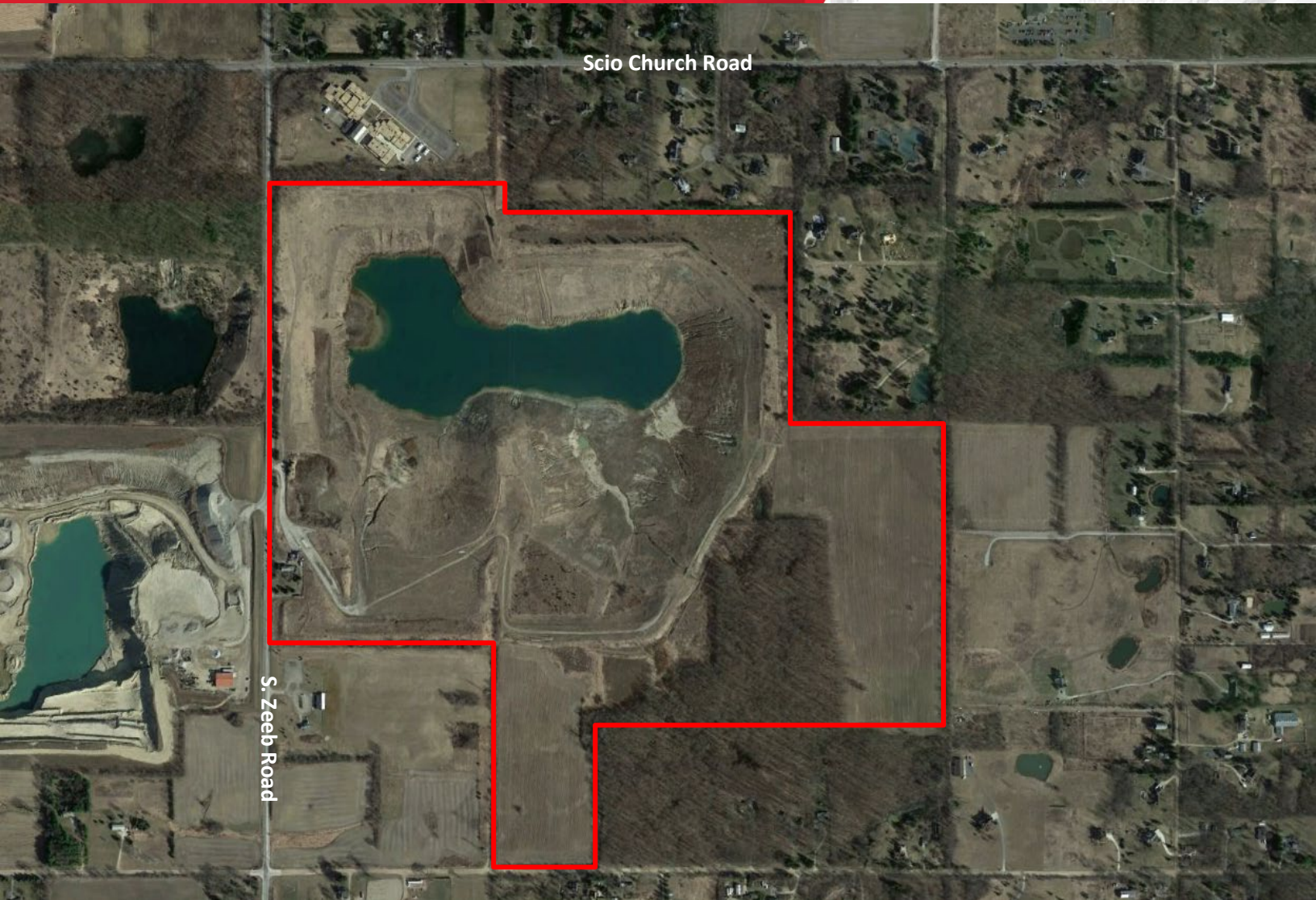
**FOR SALE**

**2575 S. Zeeb Road**

Ann Arbor, Michigan



**CUSHMAN &  
WAKEFIELD**



## 264 Acres for Sale in Ann Arbor

- 135 usable acres to accommodate several different development projects
- Zoning consists of Natural Resource District (NR), Agricultural District (AG), Planned Unit Development (PUD)
- Currently on septic and well water
- Frontage: ½ mile on S. Zeeb Road; +/- 600 feet on Waters Road
- Major crossroads: S. Zeeb Road and Scio Church Road

**Sale Price: \$2,500,000 (\$9,470/acre)**

### Contact

Steve Kozak  
Director  
+1 248 358 6107  
steve.kozak@cushwake.com

Kyle Passage  
Senior Associate  
+1 248 358 6113  
kyle.passage@cushwake.com



27777 Franklin Road, Suite 1050  
Southfield, Michigan 48034  
Main +1 248 358 6100  
cushmanwakefield.com

**FOR SALE**  
**2575 S. Zeeb Road**  
Ann Arbor, Michigan



S. Zeeb Road



Entrance on S. Zeeb Road



Just inside the entrance on S. Zeeb Road

**Contact**

Steve Kozak  
Director  
+1 248 358 6107  
[steve.kozak@cushwake.com](mailto:steve.kozak@cushwake.com)

Kyle Passage  
Senior Associate  
+1 248 358 6113  
[kyle.passage@cushwake.com](mailto:kyle.passage@cushwake.com)

27777 Franklin Road, Suite 1050  
Southfield, Michigan 48034  
Main +1 248 358 6100  
[cushmanwakefield.com](http://cushmanwakefield.com)

**FOR SALE**  
**2575 S. Zeeb Road**  
Ann Arbor, Michigan



Quarry view from entrance on S. Zeeb Road



Quarry on property



Quarry on property



Quarry on property

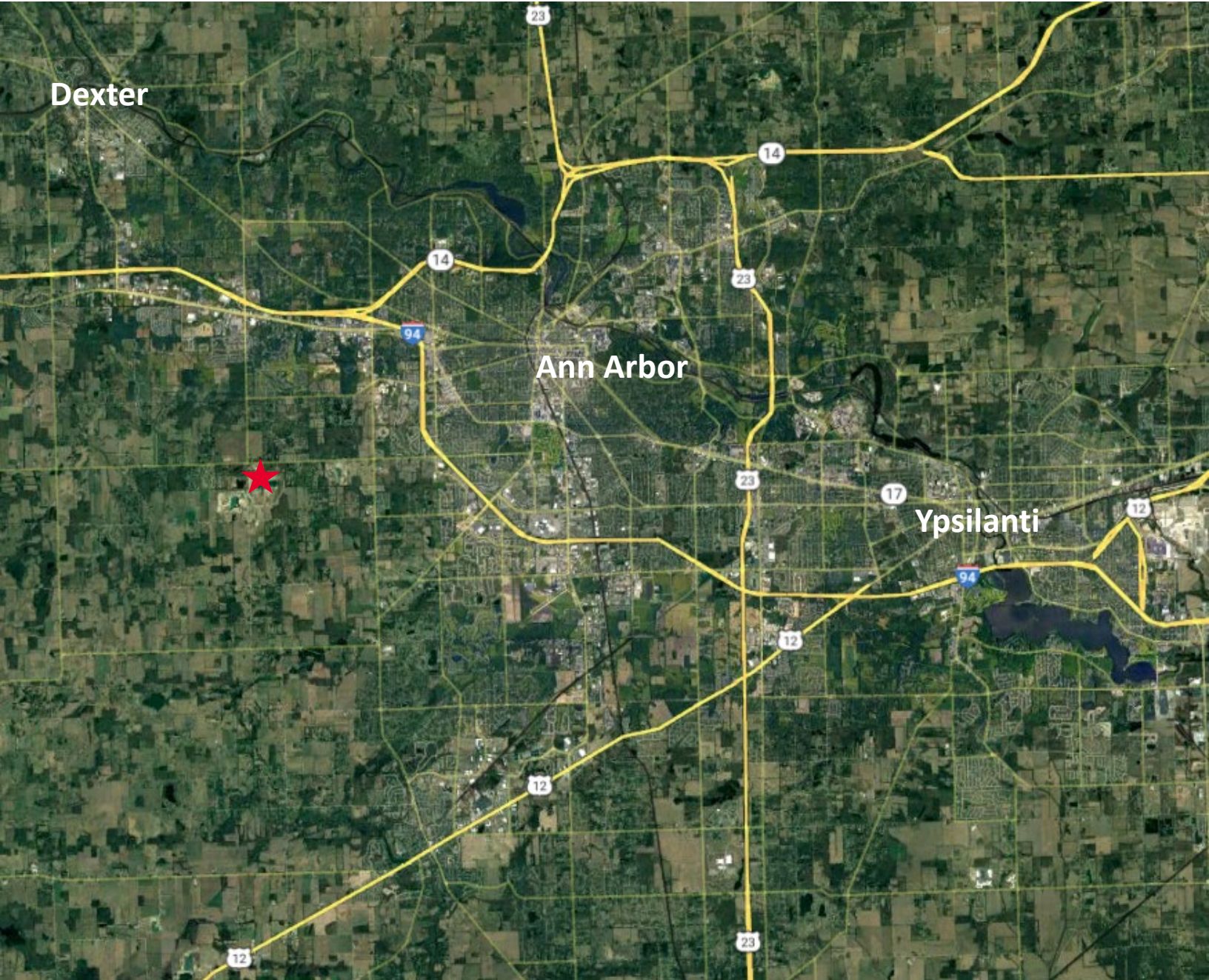
**Contact**

Steve Kozak  
Director  
+1 248 358 6107  
steve.kozak@cushwake.com

Kyle Passage  
Senior Associate  
+1 248 358 6113  
kyle.passage@cushwake.com

27777 Franklin Road, Suite 1050  
Southfield, Michigan 48034  
Main +1 248 358 6100  
cushmanwakefield.com

**FOR SALE**  
2575 S. Zeeb Road  
Ann Arbor, Michigan



**Contact**

Steve Kozak  
Director  
+1 248 358 6107  
steve.kozak@cushwake.com

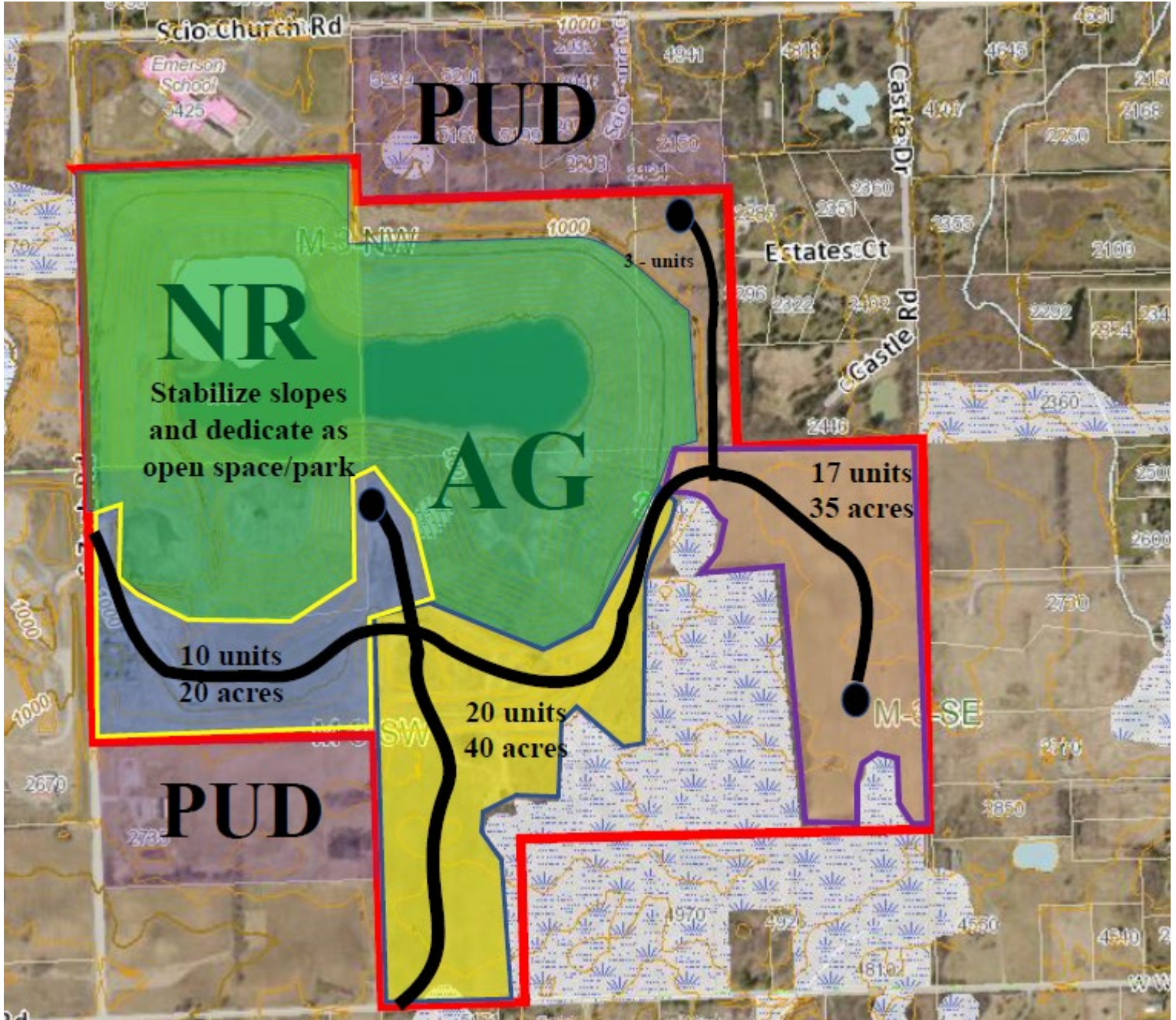
Kyle Passage  
Senior Associate  
+1 248 358 6113  
kyle.passage@cushwake.com

27777 Franklin Road, Suite 1050  
Southfield, Michigan 48034  
Main +1 248 358 6100  
cushmanwakefield.com

**FOR SALE**  
2575 S. Zeeb Road  
Ann Arbor, Michigan



## Potential Housing Development



 Potential Roads       Wooded Area

### Contact

Steve Kozak  
Director  
+1 248 358 6107  
steve.kozak@cushwake.com

Kyle Passage  
Senior Associate  
+1 248 358 6113  
kyle.passage@cushwake.com

27777 Franklin Road, Suite 1050  
Southfield, Michigan 48034  
Main +1 248 358 6100  
cushmanwakefield.com