

444 CULVER BOULEVARD

PLAYA DEL REY, CA 90293

FOR LEASE



OFFICE/RETAIL SPACE IN PLAYA DEL REY

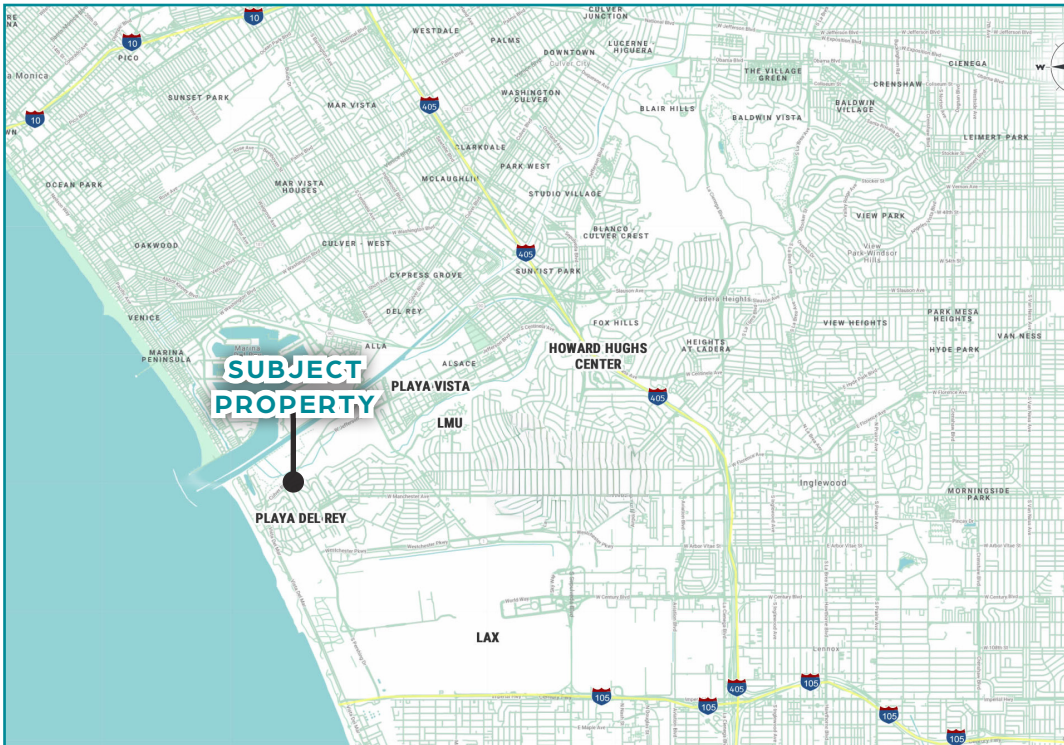
WESTMAC COMMERCIAL BROKERAGE COMPANY

1515 S Sepulveda Boulevard, Los Angeles, CA 90025
310.478.7700 | Company DRE #01096973 | www.westmac.com

WESTMAC

Commercial Brokerage Company

Property Information



Location 444 Culver Boulevard
Playa Del Rey, CA 90293

Available Space Approximately 1,396 square feet

Building Size Approximately 1,396 square feet

Rental Rate \$4.30 per square foot, per month, NNN*

*NNN are \pm \$1.27/SF/Month (Property taxes and insurance)

Zoning LAC4

Availability Immediately

Term 2 - 5 Years

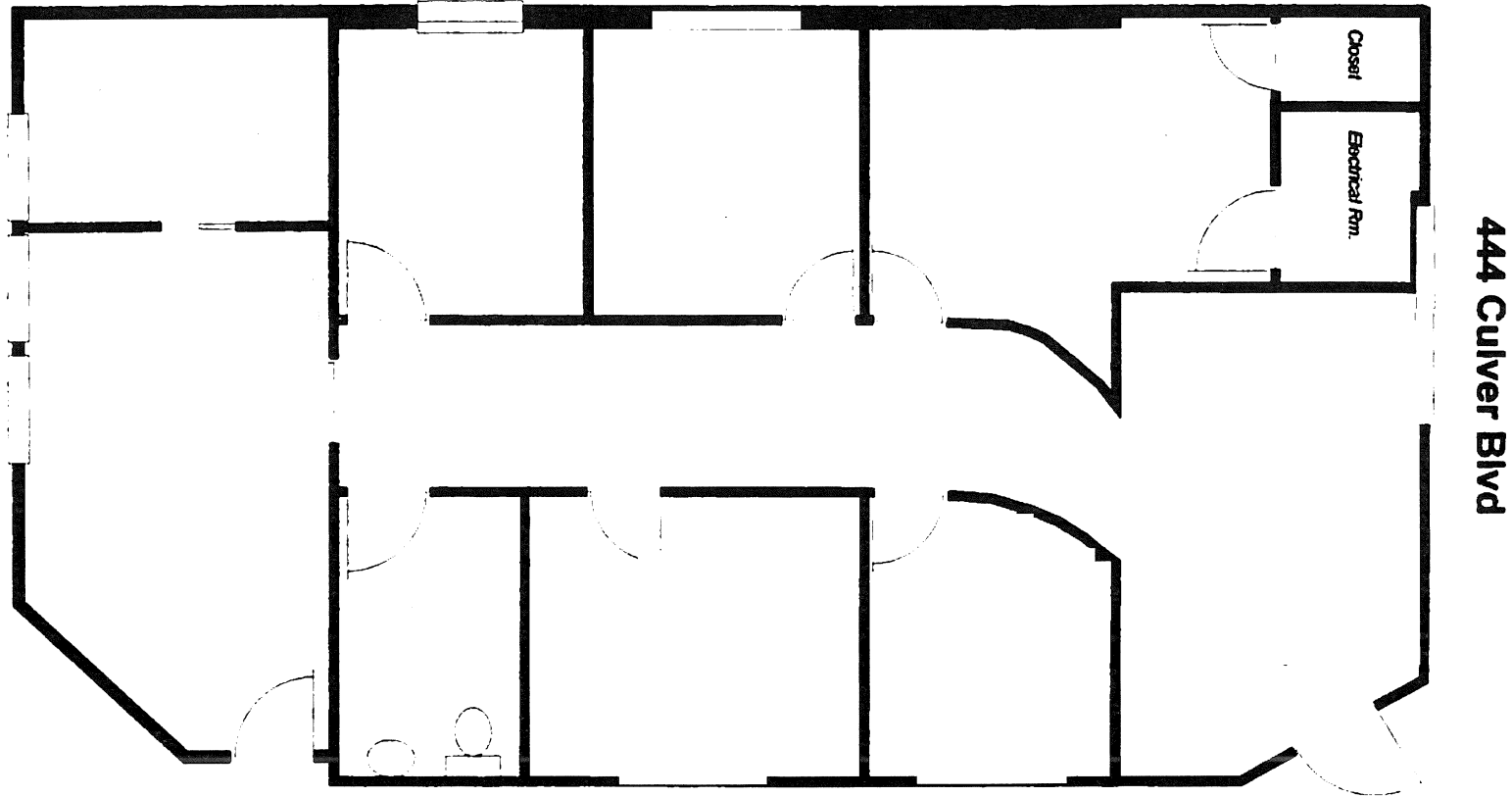
Parking 4-5 Spaces

- Comments**
- » Single tenant building located at the signalized corner of Culver Blvd and Cabora Dr
 - » Close proximity to LMU, LAX, Playa Vista, Howard Hughes.
 - » Quaint beachside location featuring many area amenities within walking distance

We obtained the information contained in this memorandum from sources we believe to be reliable. However, we have not verified its accuracy and make no guarantee, warranty or representation about it. It is submitted subject to the possibility of errors, omissions, change of price, rental or other conditions, prior sale, lease or financing or withdrawal without notice. We include projections, opinions, assumptions or estimates for example only, and they may not represent current or future performance of the property. You and your tax and legal advisors should conduct your own investigation of the property and transaction. | This statement with the information it contains is given with the understanding that all negotiations relating to the purchase, renting, or leasing of the property described above shall be conducted through this office. The above information while not guaranteed has been secured from sources we believe to be reliable.

WESTMAC
Commercial Brokerage Company

Floor Plan



Aerial Maps



Property Photographs



Property Photographs Cont.





Exclusively Listed by:

Christian C. Holland

Managing Director

holland@westmac.com

310-966-4350

DRE# 00942434

Jeffrey M. Pickett

Executive Vice President

pickett@westmac.com

424-832-5306

DRE# 01828924

WESTMAC

Commercial Brokerage Company

WESTMAC COMMERCIAL BROKERAGE COMPANY

1515 S Sepulveda Boulevard, Los Angeles, CA 90025 | 310.478.7700 | www.westmac.com | Company DRE #01096973