



For Lease

# Downtown Retail/Office Space

## Doug Martin

Vice President  
+1 603 493 8784  
doug.martin@colliers.com

## Laura Nesmith

Senior Associate  
+1 603 860 9359  
laura.nesmith@colliers.com

Property listed  
and managed by



175 Canal Street, Suite 401  
Manchester, NH 03101  
+1 603 623 0100  
colliersnh.com

## 293 Elm Street Manchester, NH

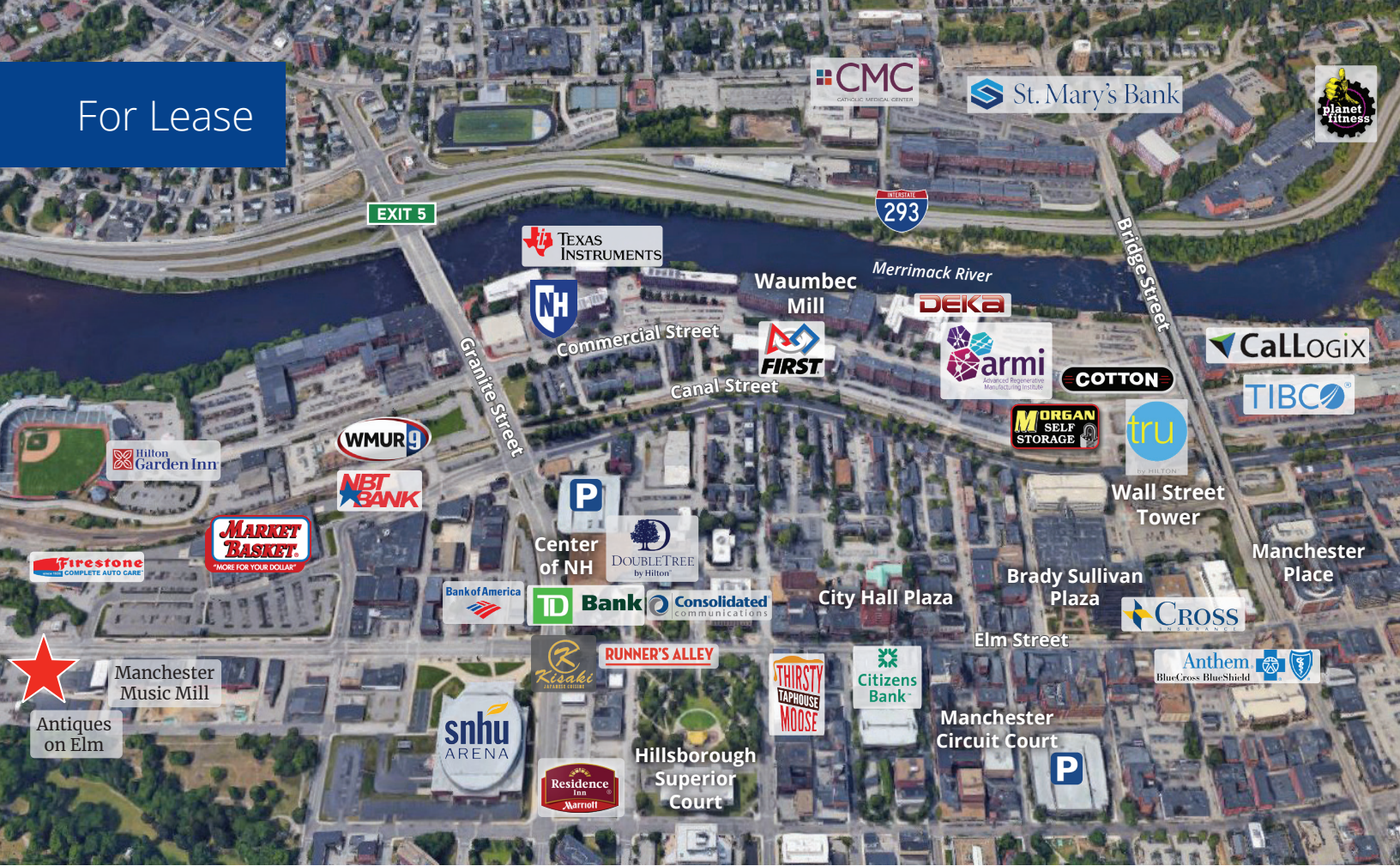
### Property Highlights

- Up to 5,000± RSF available for lease on the 2nd floor of a downtown mixed-use building in Manchester, NH
- Unit 2 is 2,772± RSF of retail/office space; available 2/1/25
- Unit 3 is 2,228± RSF of retail/office space
- Units 2 & 3 can be combined for a total of 5,000± RSF
- Professionally managed by Colliers
- On-site and on-street parking
- Neighbors include Antiques on Elm, Market Basket, Manchester Music Mill, Triangle Credit Union, and more
- Located directly on Elm Street close to all downtown amenities and near I-293

Information herein has been obtained from sources deemed reliable, however its accuracy cannot be guaranteed by Colliers International | New Hampshire & Maine. The user is required to conduct their own due diligence and verification. Colliers International | New Hampshire & Maine is independently owned and operated.



For Lease



## Specifications

Address:	293 Elm Street
Location:	Manchester, NH 03101
Building Type:	Retail/office
Year Built:	1900
Total Building RSF:	8,700±
Available RSF:	Unit 2: 2,772± Unit 3: 2,228± Contiguous: 5,000±
Acreage:	.21±
Floors:	2
Road Frontage:	79± on Elm Street
Utilities:	Municipal water & sewer Natural gas
Zoning:	CBD
Parking:	7 on-site spaces and on-street
2023 NNN Expenses:	\$4.44 PSF
Lease Rate:	\$8.95 NNN

### Contact us:

#### Doug Martin

Vice President  
+1 603 493 8784  
doug.martin@colliers.com

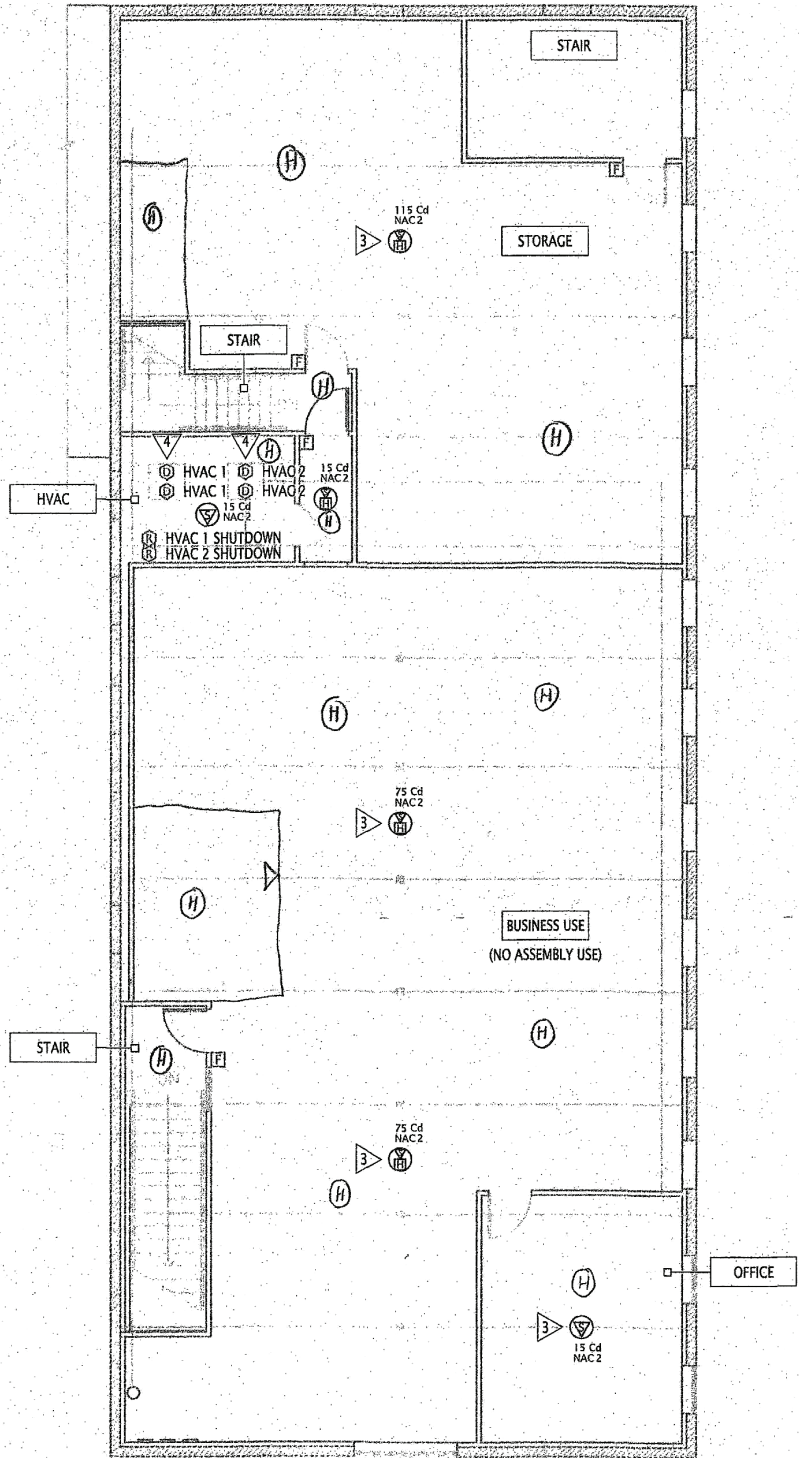
#### Laura Nesmith

Senior Associate  
+1 603 860 9359  
laura.nesmith@colliers.com



Colliers | 175 Canal Street, Suite 401, Manchester, NH 03101  
+1 603 623 0100 | colliersnh.com

# 2nd Floor Plan



4 SECOND FLOOR  
1/8" = 1'-0"