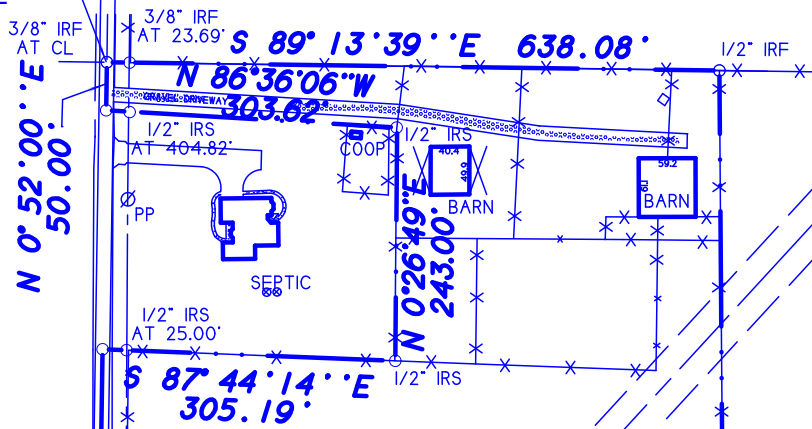




20.205 ACRES
SHERRY THOMASON
VOL. 725, PG. 1

POINT OF BEGINNING TRACT 2



48.641 ACRES
RUBY HOUSER IRVINE
TO
MAX DOYLE HOLCOMB
VOL. 118, PG. 679

**PROPOSED
10.24 ACRES**

COUNTY ROAD 2656

**TRACT 2
30.24 ACRES**

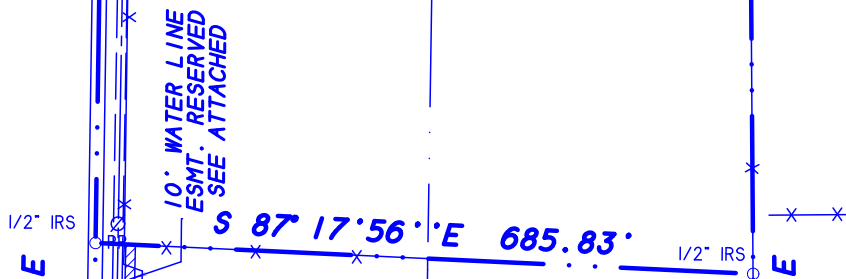
PART OF 27.13 ACRES
JAMES WAYNE POTEET & JUANITA POTEET
TO
POTEET FAMILY, LP
VOL. 1482, PG. 476
O.P.R.H.C.T.

38.095 ACRES
ROBERT N. & ROGENE PENNINGTON
TO
C. E. JONES
VOL. 644, PG. 175

**PROPOSED
20.00 ACRES**

47.179 ACRES
FAYE V. HOUSER
TO
MAX D. HOLCOMB
VOL. 156, PG. 740

PART OF 10.00 ACRES
JAMES WAYNE POTEET
JUANITA POTEET
V. 968, P. 517



**TRACT 1
5.17 ACRES**

S 0° 25' 00\"/>

CR 2658
POINT OF BEGINNING TRACT 1

N 89° 04' 55\"/>

1.25 ACRES
MICHAEL ADAMS
VOL. 107, PG. 487

STATE HIGHWAY 66