



PROPERTY DESCRIPTION

4060 N Dupont Blvd in New Castle, DE is a prime industrial property, perfectly suited for businesses in need of a well-connected and efficient warehouse location. Strategically positioned on U.S. 13, this property offers seamless access to major transportation routes, including I-495, I-295, and I-95 – an ideal setup for logistics, distribution, or manufacturing operations. Its corner unit location allows for abundant natural light, and it's just a short drive from the Philadelphia Airport, enhancing the convenience for any business needs.

PROPERTY DETAILS

- **Building Size:** 72,000 SF
- **Lot Size:** 4.63 acres
- **Lease Rate:** \$10 - \$12/SF/NNN
- **Zoning:** CR (Commercial Regional)
- **Ceiling Height:** 20'
- **Electric:** 3-phase power
- **Parking:** 95 surface parking spaces

AVAILABLE UNITS

- **Units 11-20:** 36,000 SF (300x120)
- **Loading:** 10 drive-in overhead doors
 - > Ability to demise the space
 - > Radiant heat in the warehouse
 - > Kitchen facility
 - > Multi-stall bathrooms

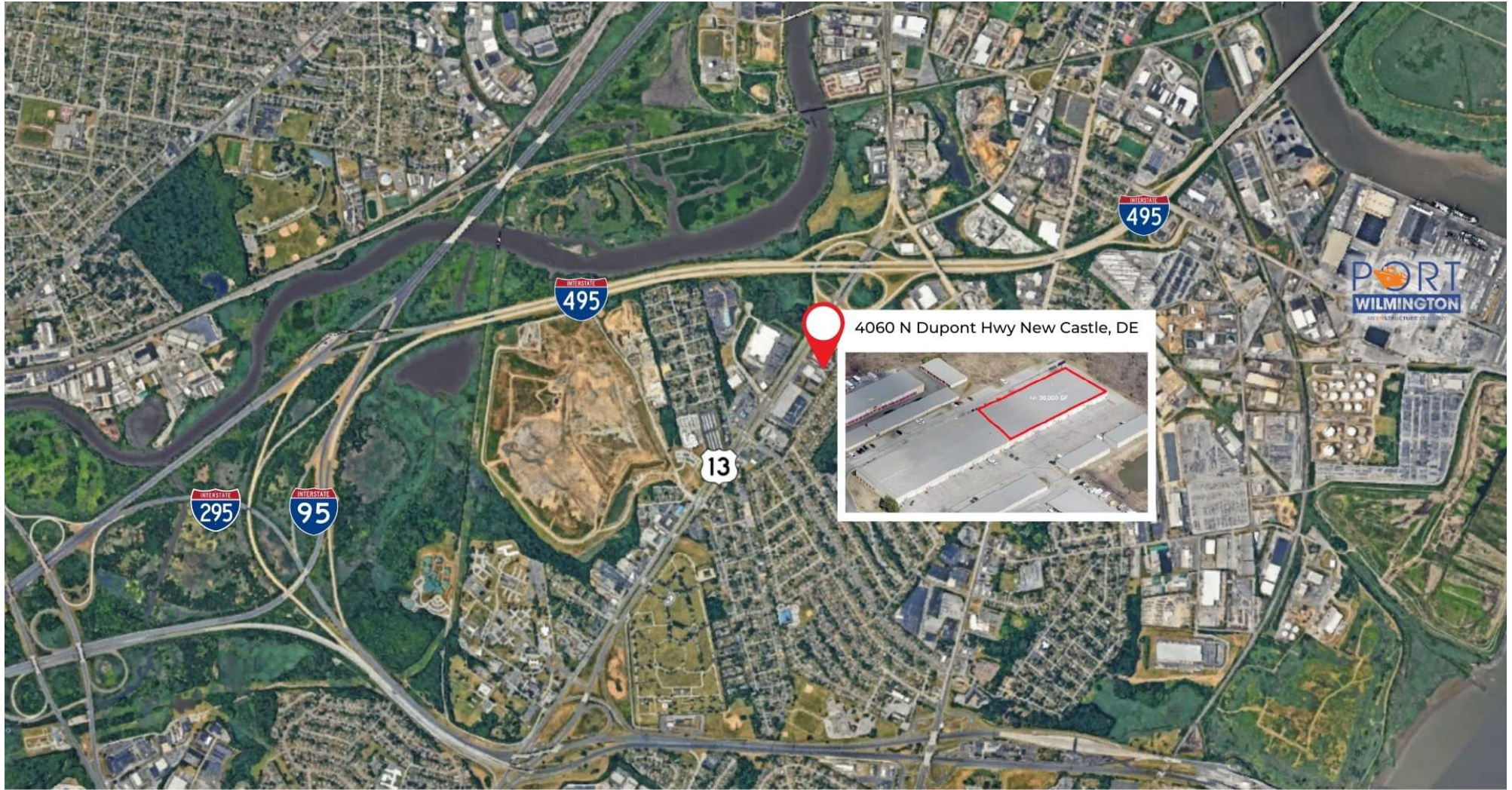


For More Information, Contact:

Andy Fox
afox@dsmre.com
302.283.1800 Office
302.229.1304 Cell

Alicia Fox
alicia@dsmre.com
302.283.1800 Office
302.419.5477 Cell

DSM Commercial
Real Estate Services
3304 Old Capitol Trail
Wilmington, DE 19808
dsmre.com



Prime Industrial Location | Ideal for Logistics & Distribution | Established Industrial Area | Excellent Connectivity

For More Information, Contact:

Andy Fox
afox@dsmre.com
302.283.1800 Office
302.229.1304 Cell

Alicia Fox
alicia@dsmre.com
302.283.1800 Office
302.419.5477 Cell

DSM Commercial
Real Estate Services
3304 Old Capitol Trail
Wilmington, DE 19808
dsmre.com



36,000 SF SPACE GALLERY

The Xtreme Zone features a versatile layout taking up 10 bays, each bay offering 3,600 square feet, with a total of 7,200 square feet fully climate-controlled. Currently operating as an indoor sports and entertainment venue, this flexible space is ideal for a wide range of uses. With its prime setup, ample square footage, and adaptable layout, the property presents a great opportunity for leasing, whether for entertainment, retail, or other commercial ventures.

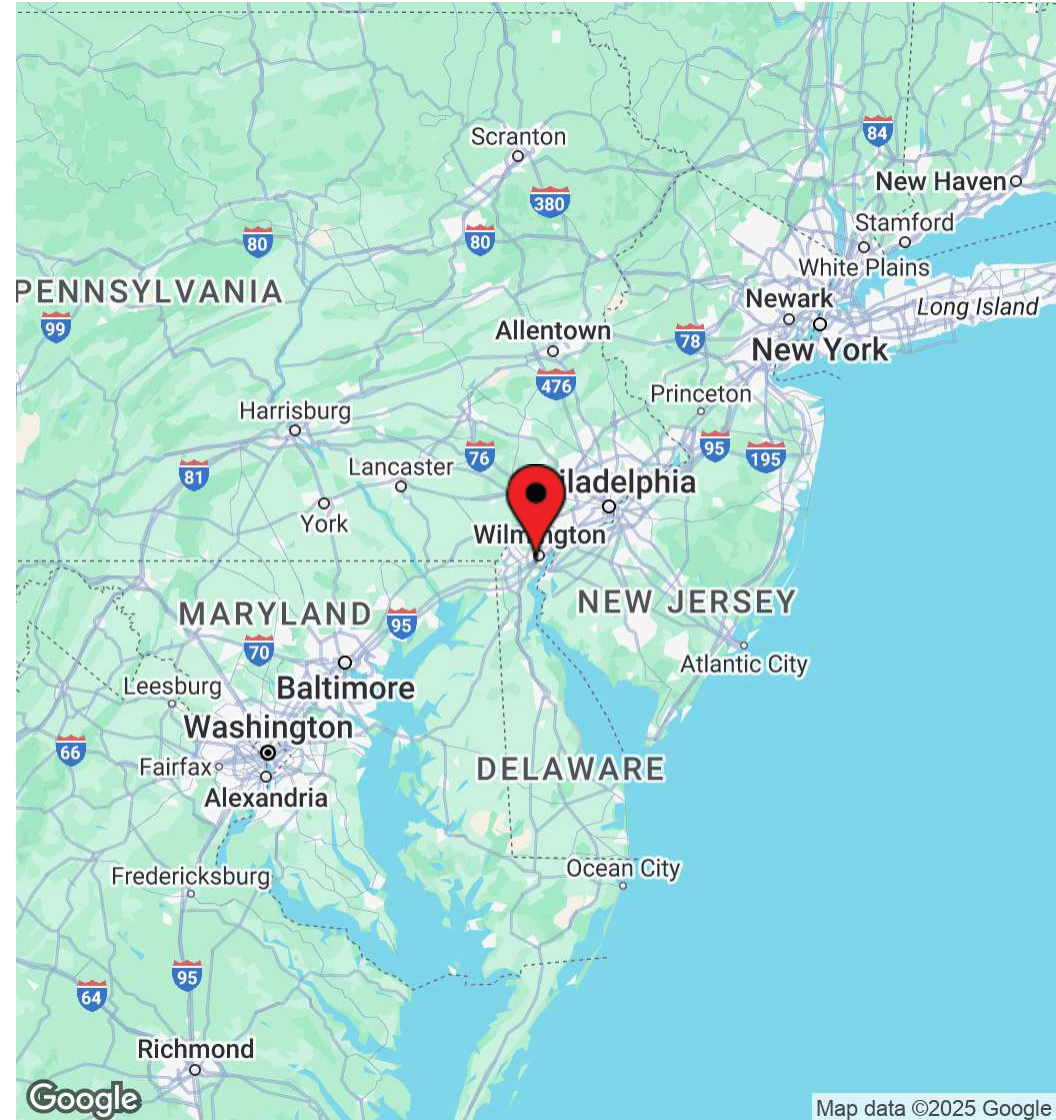
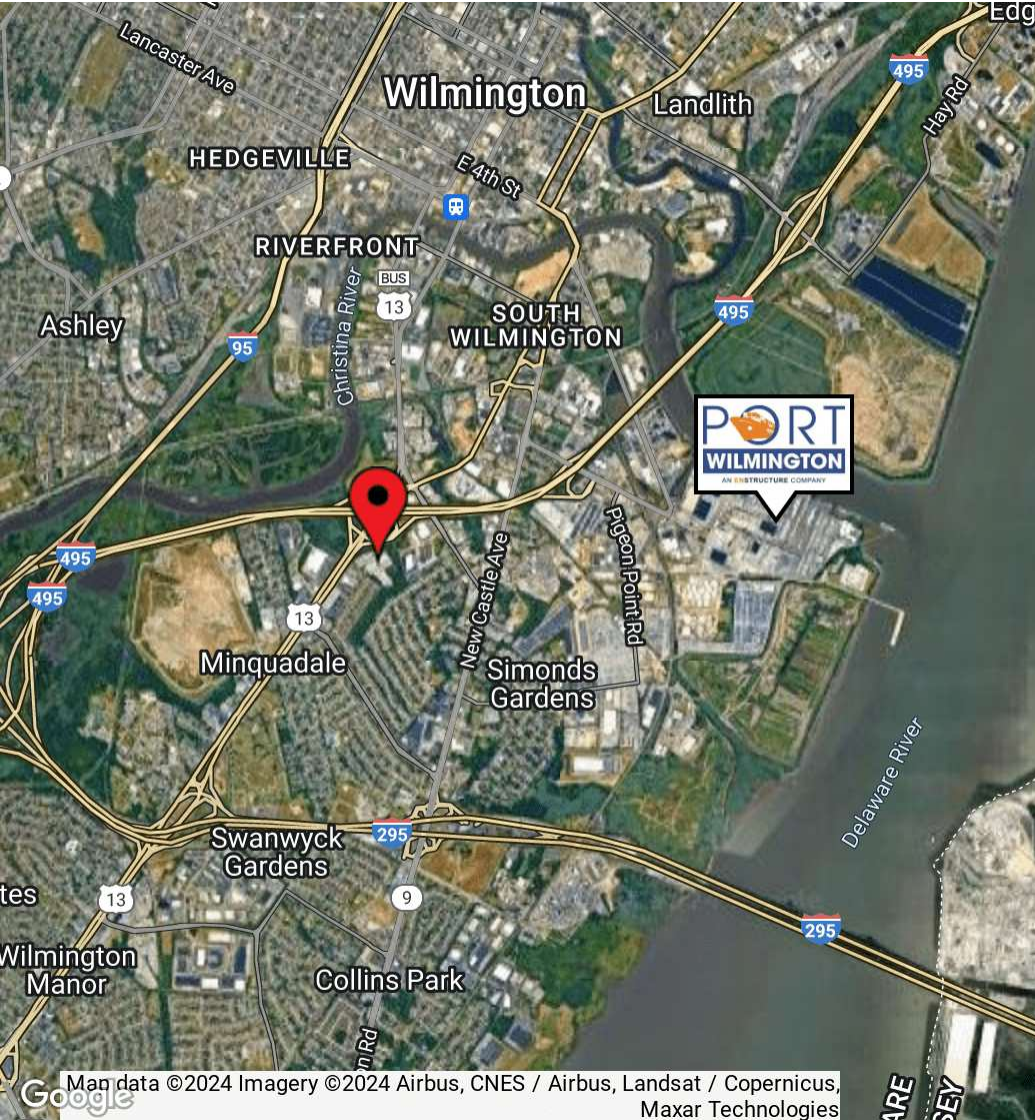


For More Information, Contact:

Andy Fox
afox@dsmre.com
302.283.1800 Office
302.229.1304 Cell

Alicia Fox
alicia@dsmre.com
302.283.1800 Office
302.419.5477 Cell

DSM Commercial
Real Estate Services
3304 Old Capitol Trail
Wilmington, DE 19808
dsmre.com



For More Information, Contact:

Andy Fox
afox@dsmre.com
302.283.1800 Office
302.229.1304 Cell

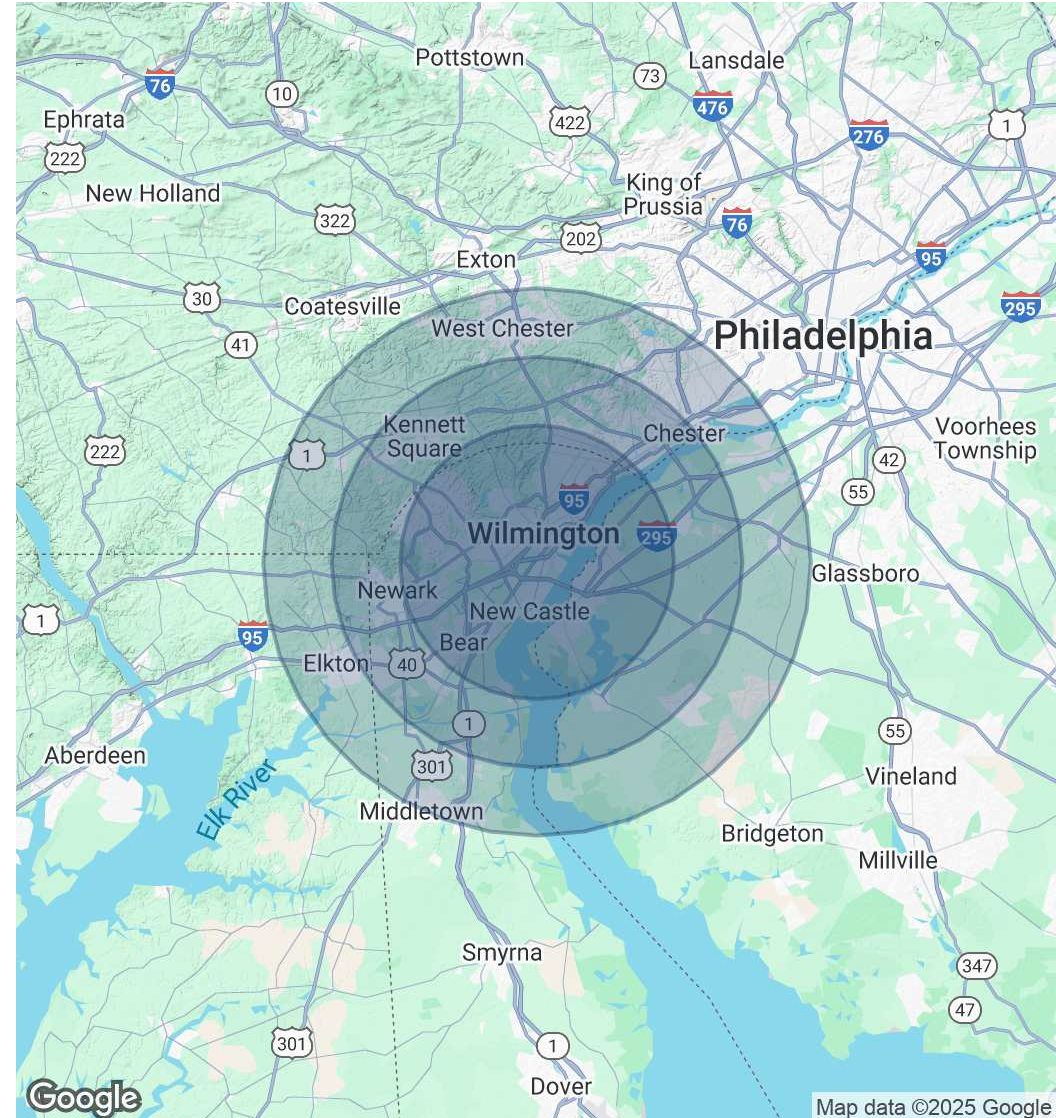
Alicia Fox
alicia@dsmre.com
302.283.1800 Office
302.419.5477 Cell

DSM Commercial
Real Estate Services
3304 Old Capitol Trail
Wilmington, DE 19808
dsmre.com

POPULATION	10 MILES	15 MILES	20 MILES
Total Population	485,762	761,351	1,203,210
Average Age	41	41	41
Average Age (Male)	40	40	40
Average Age (Female)	43	42	42

HOUSEHOLDS & INCOME	10 MILES	15 MILES	20 MILES
Total Households	195,219	294,801	459,643
# of Persons per HH	2.5	2.6	2.6
Average HH Income	\$105,638	\$119,230	\$124,122
Average House Value	\$345,822	\$383,967	\$391,864

Demographics data derived from AlphaMap



For More Information, Contact:

Andy Fox
afox@dsmre.com
302.283.1800 Office
302.229.1304 Cell

Alicia Fox
alicia@dsmre.com
302.283.1800 Office
302.419.5477 Cell

DSM Commercial
Real Estate Services
3304 Old Capitol Trail
Wilmington, DE 19808
dsmre.com