



1401 5th Ave N, St. Petersburg, FL 33705



💰 Lease Rate: **Call For Lease Rate**

📏 Unit Size: **2,000 - 13,623 SF**

✅ Available: **Now**

Kevin Yeager

VP Commercial Services

(727) 214-4590 ☎

kevin@cprteam.com ✉

Hayden Peiker

Industrial Specialist

(727) 480-5288 ☎

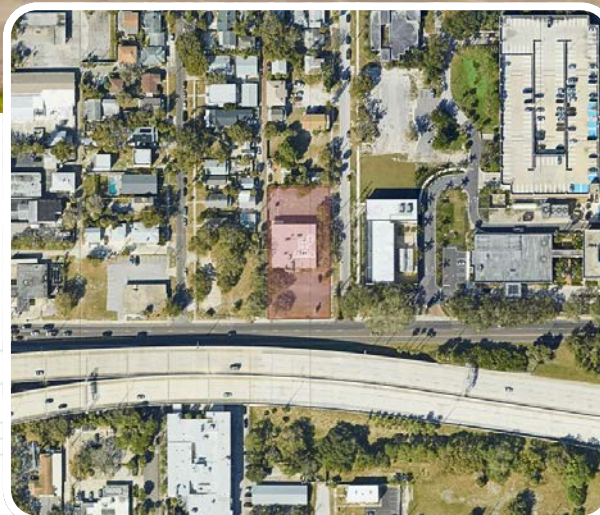
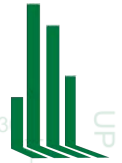
hayden@cprteam.com ✉

PROPERTY
OVERVIEW

PRICING & DEAL
OVERVIEW

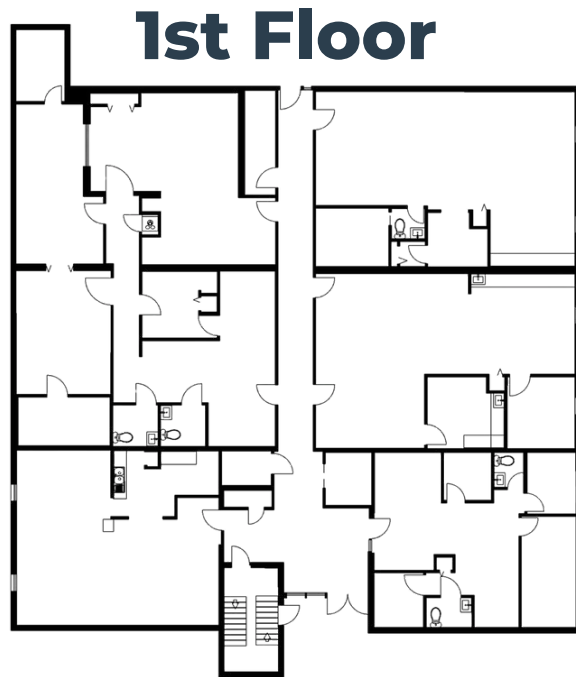
DEMOGRAPHIC
DATA

LISTING
TEAM



COMMERCIAL PARTNERS REALTY

Floor Plans



1401 5th Ave N, St. Petersburg, FL 33705

Located at 1401 5th Avenue North, this property offers approximately 12,000 SF of medical office space with suites ranging from 1,000 to 2,500 SF. The floor plans make it well-suited for a variety of medical or professional uses, with **CRT-1 zoning (Corridor Residential Traditional) supporting a wide range of tenants.**

Positioned directly next to BayCare's St. Anthony's Hospital, the property benefits from strong referral potential and proximity to an established medical hub. The building is wheelchair accessible, with **excellent access to I-275 and only minutes from Downtown St. Petersburg,** ensuring convenience for patients, staff, and visitors.

This combination of location, accessibility, and medical synergy makes 1401 5th Ave N **a compelling option for healthcare providers and professional users seeking space in the heart of St. Petersburg.**

Highlights



Floor Plan Suited For Medical Professionals



Flood Zone: X (Minimal Flood Hazard)



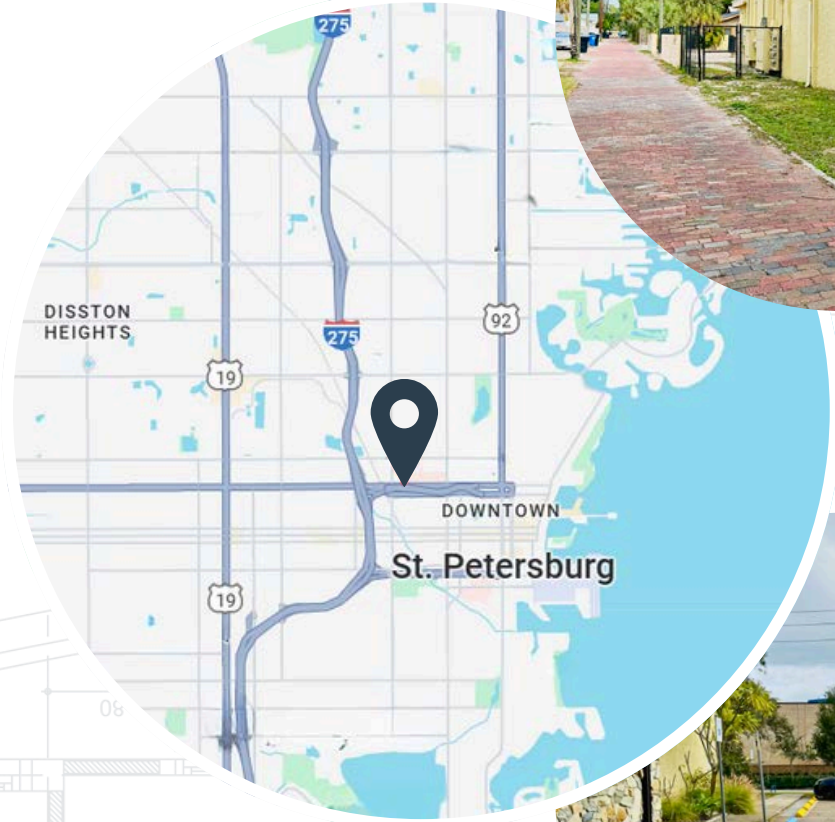
Located Next To BayCare's St Anthony's Hospital



Wheelchair Accessible



Air Conditioned



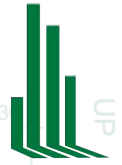
*Information herein is not warranted and subject to change without notice.
We assume no liabilities for errors and omissions.*

PROPERTY
OVERVIEW

PRICING & DEAL
OVERVIEW

DEMOGRAPHIC
DATA

LISTING
TEAM

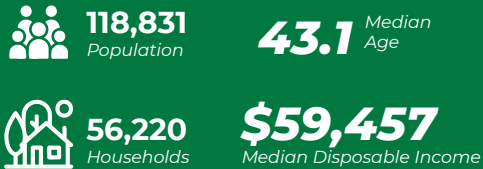


DEMOGRAPHIC SUMMARY

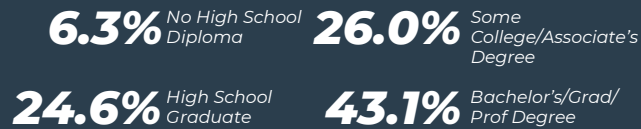
1401 5th Ave N, St. Petersburg, FL 33705
RING OF 3 MILES



KEY FACTS



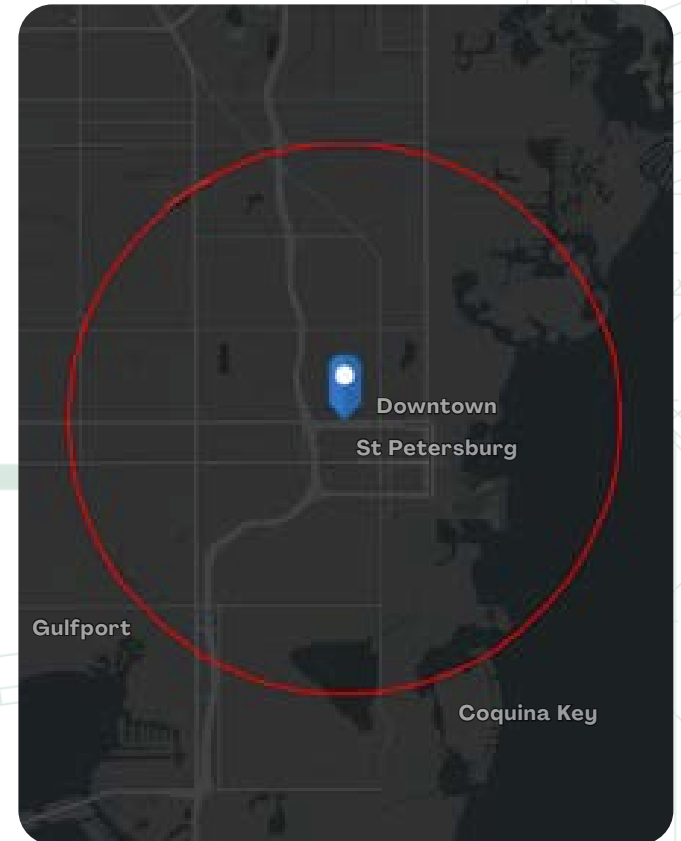
EDUCATION



INCOME



EMPLOYMENT



Source: This infographic contains data provided by Esri (2024, 2029). © 2025 Esri

Listing Team



Kevin Yeager

VP Commercial Services

☎ (727) 214-4590

✉ kevin@cprteam.com



Hayden Peiker

Industrial Specialist

☎ (727) 480-5288

✉ hayden@cprteam.com

☎ 727-822-4715

🌐 www.cprteam.com

🔗 [CommercialPartnersRealty](https://www.commercialpartnersrealty.com)