



CONTACT US

Mark Lewkowitz, SIOR
Executive Vice President
+1 858 922 8988
CA Lic 01785338
mark.lewkowitz@colliers.com

Nick Price
Principal
+1 619 534 1000
CA Lic #01773111
np@pricerealestateinvestments.com

Colliers
4350 La Jolla Village Dr
Suite 500
San Diego, CA 92122
Main: +1 858 455 1515



FOR SALE OR LEASE

1515-1539 Olivella Way

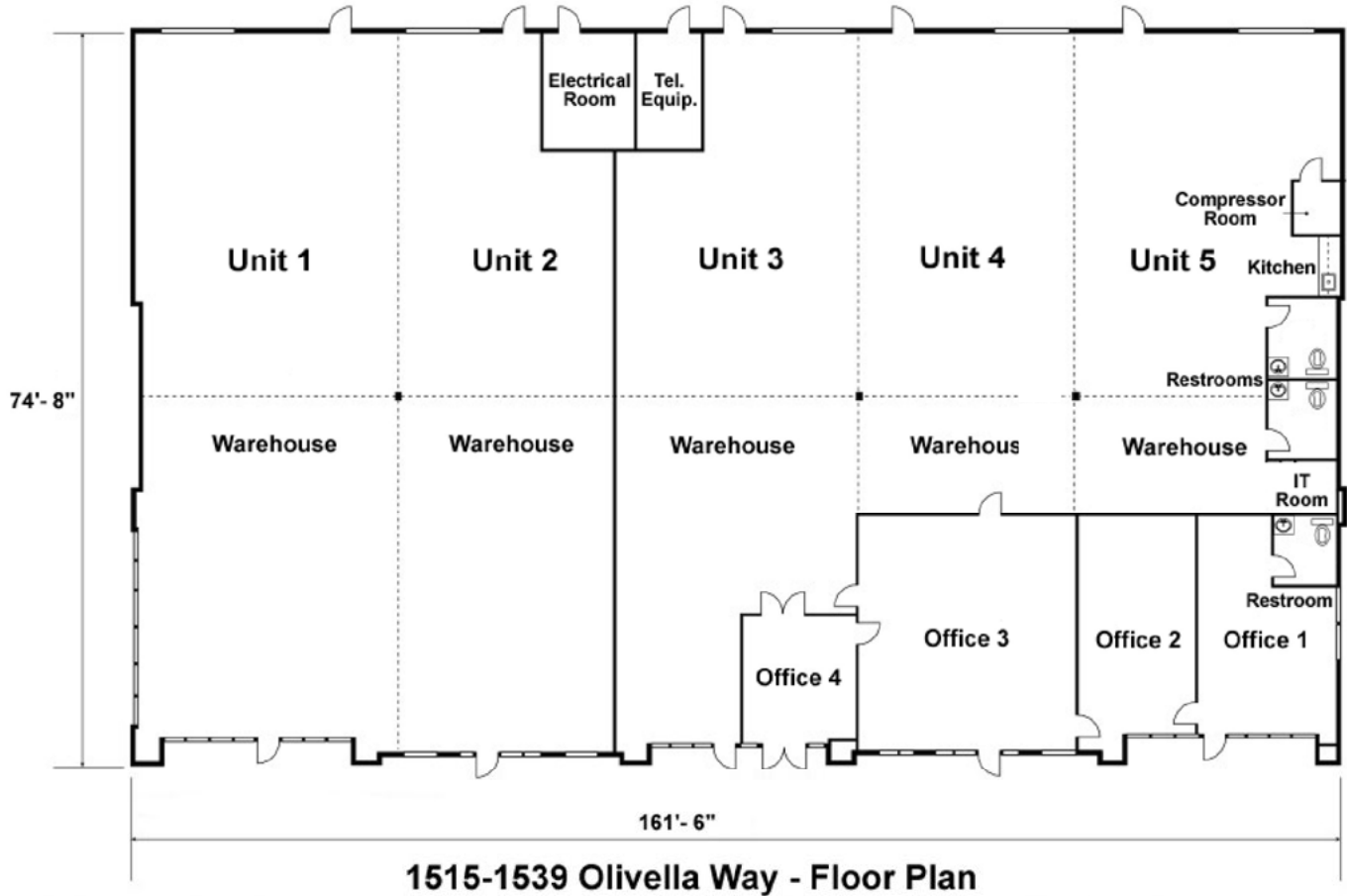
San Diego, CA 92154

+11,821 SF Multi-Tenant Industrial Warehouse Building | Otay

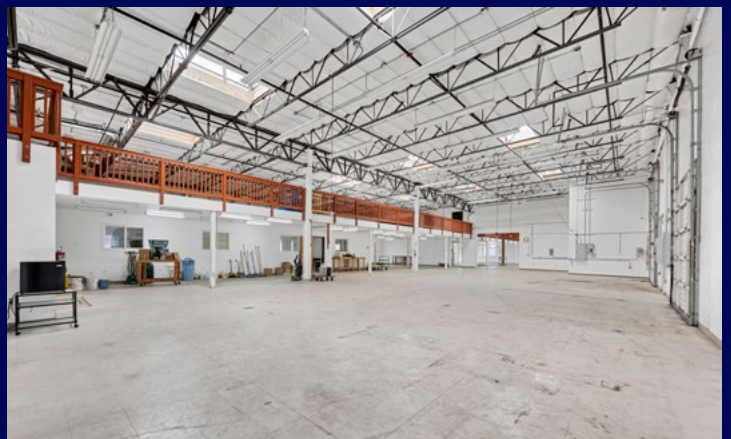
Property Highlights

- 5 condo units (5 APNs), totalling \pm 11,821 SF
- 5 grade-level loading doors
- Bonus mezzanine (\pm 5,000 SF) not included in building SF
- 18' Clear Height - Sprinklers throughout
- Heavy Power: 1,000 Amps, 240 Volts - Free gas and water
- Protected with alarm system and 22 cameras + remote access
- 4 offices with Air Conditioning and Heating + 3 bathrooms
- Lots of natural light: large windows, glass doors, and 11 skylights
- 30 designated parking spaces + guest parking
- HOA of \$1,866/mo. covers gas, water, roof, walls, slab, sprinklers, windows, doors, outer paint, parking lot, and landscaping.
- Easy access to 4 freeways: 125, 905, 805, 5
- Less than 2 miles to border crossing
- Most professional Multi-Tenant Project in Otay Mesa
- [Zoning Link Info](#)
- Sale Price: \$3,100,000

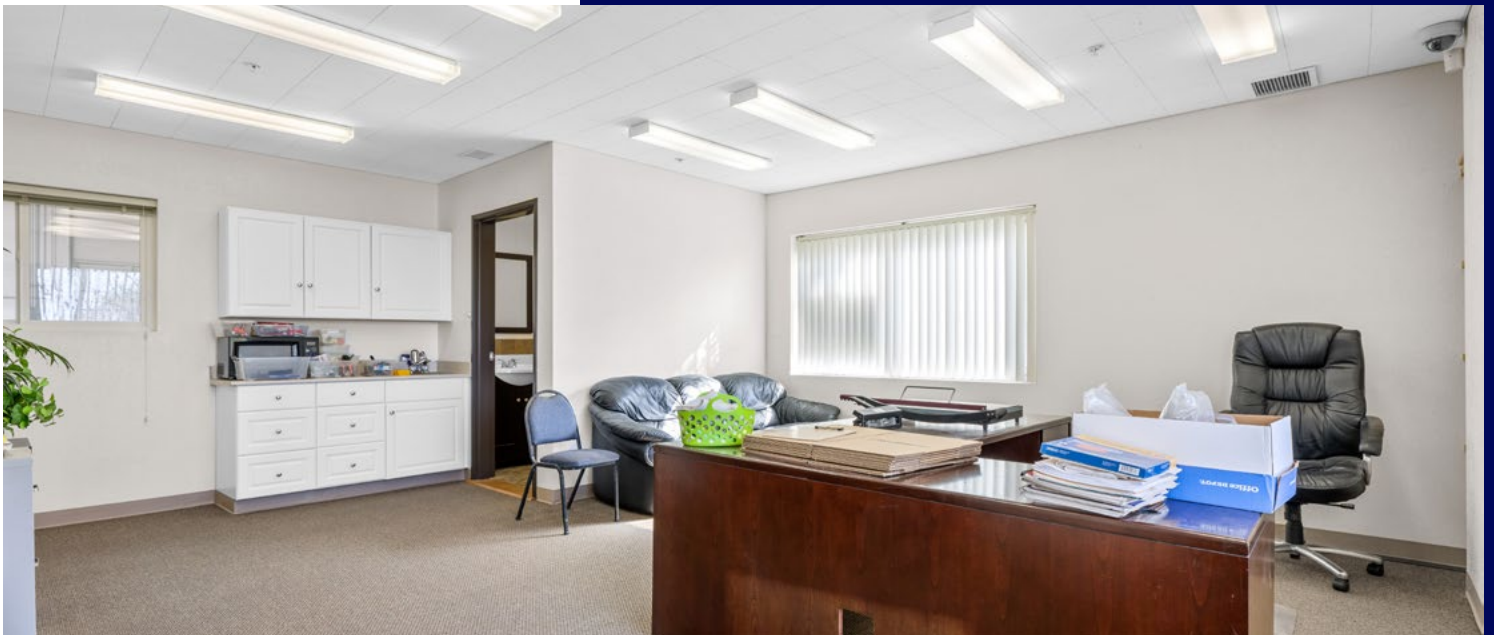
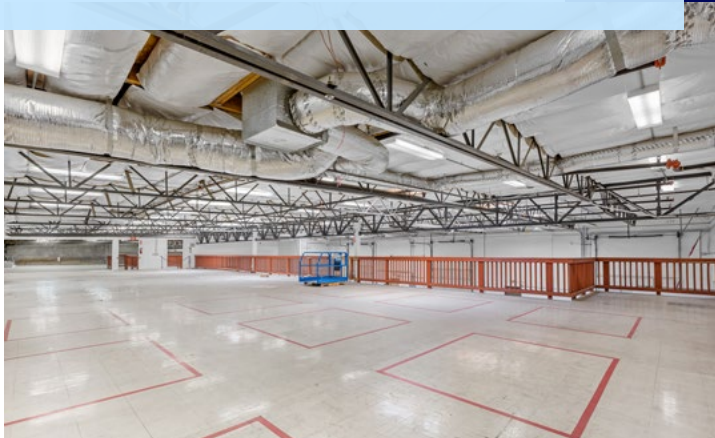
For Sale or Lease
±11,821 SF Multi-Tenant Industrial Warehouse Building | Otay



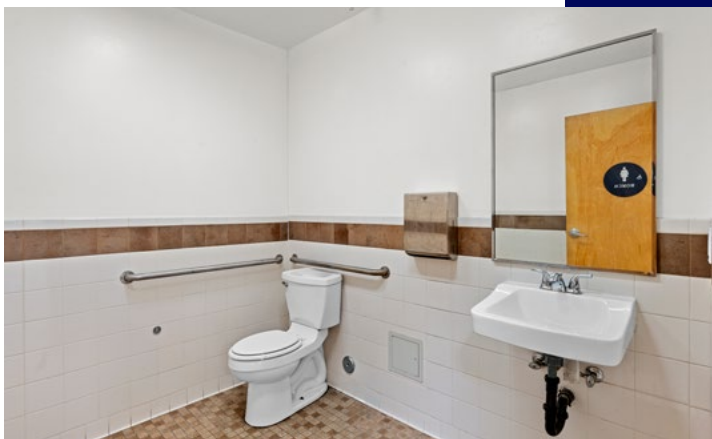
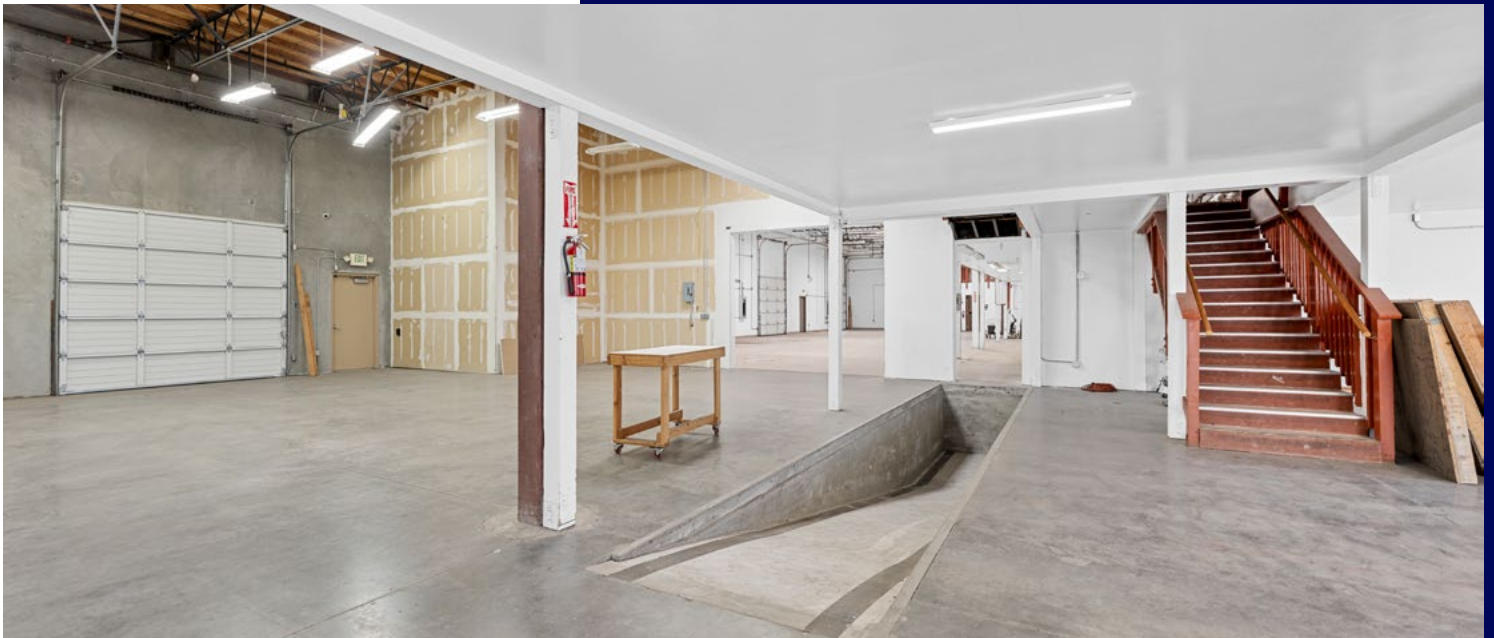
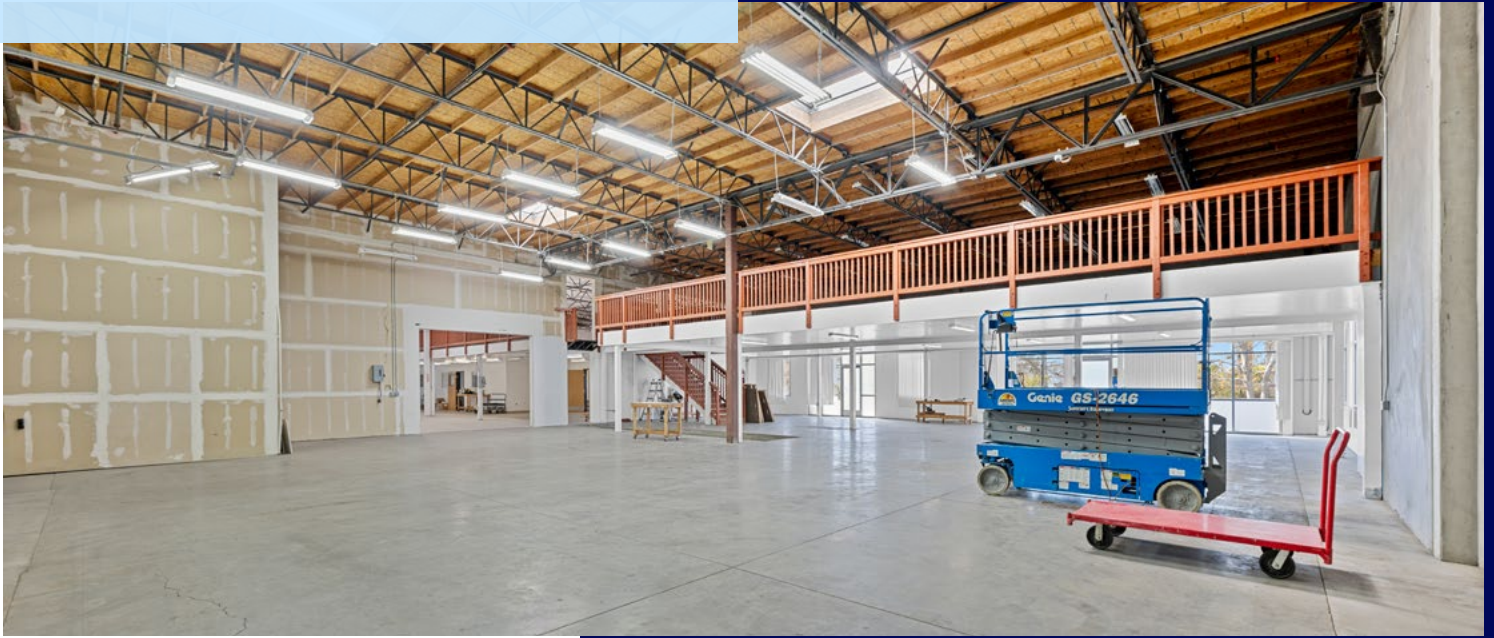
Property Photos



Property Photos



Property Photos





For Sale or Lease
±11,821 SF Multi-Tenant Industrial Warehouse Building | Otay





Copyright © 2025 Colliers International. Information herein has been obtained from sources deemed reliable, however its accuracy cannot be guaranteed. The user is required to conduct their own due diligence and verification.

CONTACT US

Mark Lewkowitz, SIOR
Executive Vice President
+1 858 922 8988
CA Lic 01785338
mark.lewkowitz@colliers.com

Nick Price
Principal
+1 619 534 1000
CA Lic #01773111
np@pricerealestateinvestments.com

Colliers

PRICE
REAL ESTATE INVESTMENTS