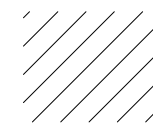
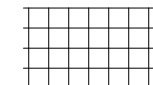


MASONRY REHABILITATION AND RECONSTRUCTION ELEVATION
GRAPHICS LEGEND

- 

REMOVE EXTERIOR WYTHE OF HARD BRICK OR DETERIORATED BRICK IN HATCHED AREA AND REPLACE WITH RECLAIMED BRICK TO MATCH EXISTING.
- 

100% REPOINT MORTAR JOINTS IN HATCHED AREA

MASONRY REHABILITATION AND RECONSTRUCTION
ELEVATION GENERAL NOTES

1. NOTE

MASONRY REHABILITATION AND RECONSTRUCTION
ELEVATION KEY NOTES

- M1** > REMOVE CRACKED, BROKEN, OR FAILING BRICK AND REPLACE WITH SALVAGED BRICK TO MATCH EXISTING HISTORIC BRICK. REPOINT AREA AS REQUIRED WITH MORTAR THAT EXACTLY MATCHES EXISTING HISTORIC

M2 > REPOINT MORTAR JOINTS IN DESIGNATED AREA. NEW MORTAR SHALL EXACTLY MATCH EXISTING HISTORIC

M3 > RECONSTRUCT MASONRY JAMBS AT NEW DOOR OR WINDOW OPENING WITH SALVAGED BRICK TO MATCH EXISTING HISTORIC BRICK. TOOTH IN NEW BRICKS, SEE ALSO DOOR AND WINDOW DETAILS IN A800 SHEET SERIES.

M4 > COMPLETELY REMOVE EXTERIOR WYTHE OF BRICK AT WALL, PILASTER OR CORNER. KEEP ALL SALVAGEABLE BRICKS FOR FUTURE RE-USE. RECONSTRUCT AREA USING SALVAGED BRICKS TO MATCH EXISTING HISTORIC.

M5 > INSTALL EXISTING OR REPLICATED CAST IRON STEEL SILL. SEE WINDOWS DETAILS ON A800 SERIES FOR PROFILE OF NEW SILL.
- M6** > REMOVE TAR REMNANTS ON BRICK USING THE GENTLEST MEANS POSSIBLE. COMPLETE REPLACEMENT OF BRICK SHALL BE ACCEPTABLE ONLY IF TAR REMAINS AFTER MULTIPLE ATTEMPTS OF REMOVAL.

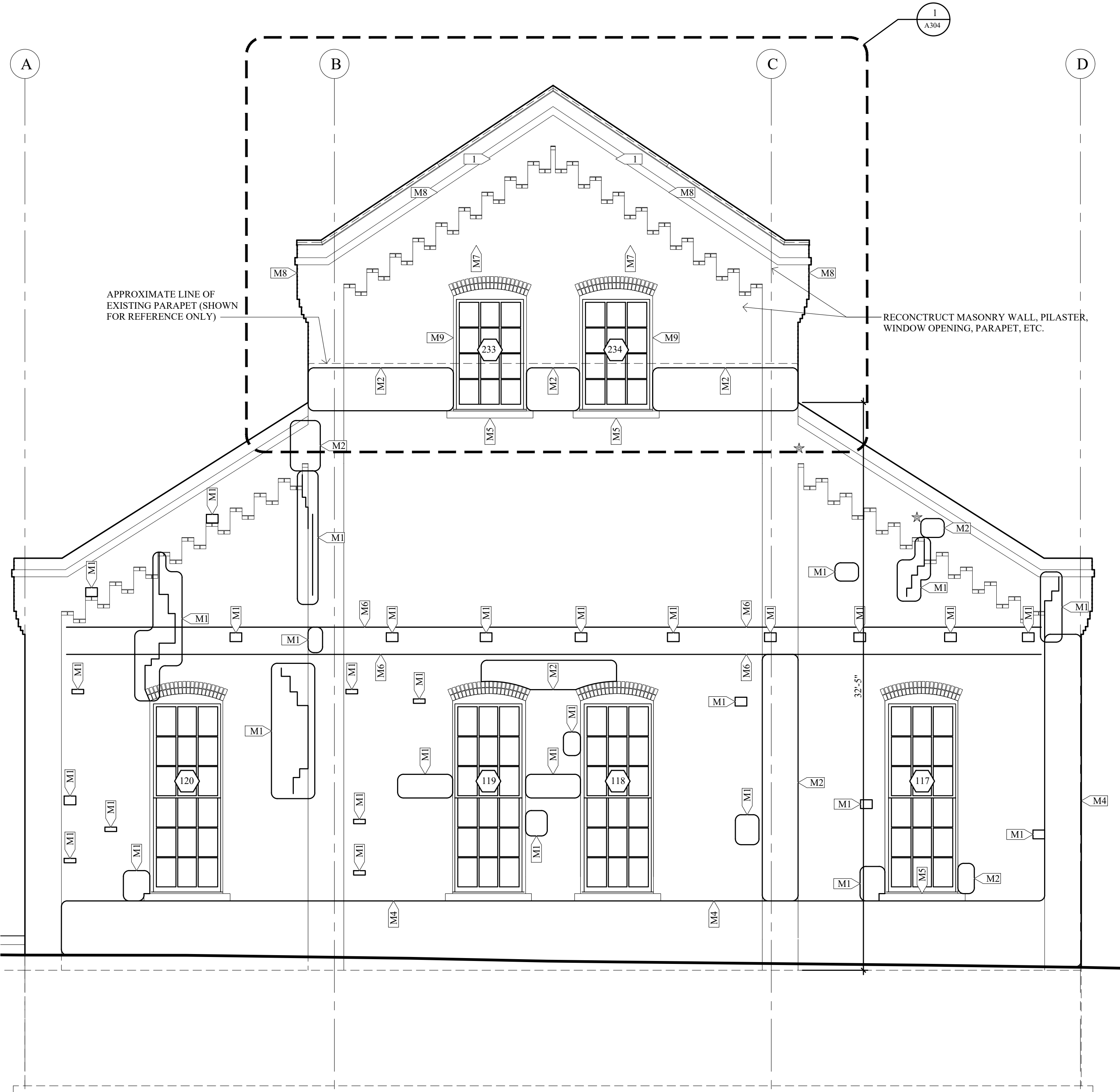
M7 > RECONSTRUCT BRICK DENTIL USING RECLAIMED BRICK TO MATCH EXISTING. THE NEW BRICK DENTIL COURSING SHALL MATCH EXISTING HISTORIC BRICK DENTILS PRESENT ON THE NORTH, EAST AND WEST ELEVATIONS.

M8 > RECONSTRUCT BRICK PARAPET USING RECLAIMED BRICK TO MATCH EXISTING HISTORIC BRICK

M9 > NEW MASONRY WINDOW OPENING (JAMBS, ROWLOCK ARCH, ETC.) IN SECTION OF NEW MASONRY WALL USING RECLAIMED BRICK TO MATCH EXISTING HISTORIC BRICK.

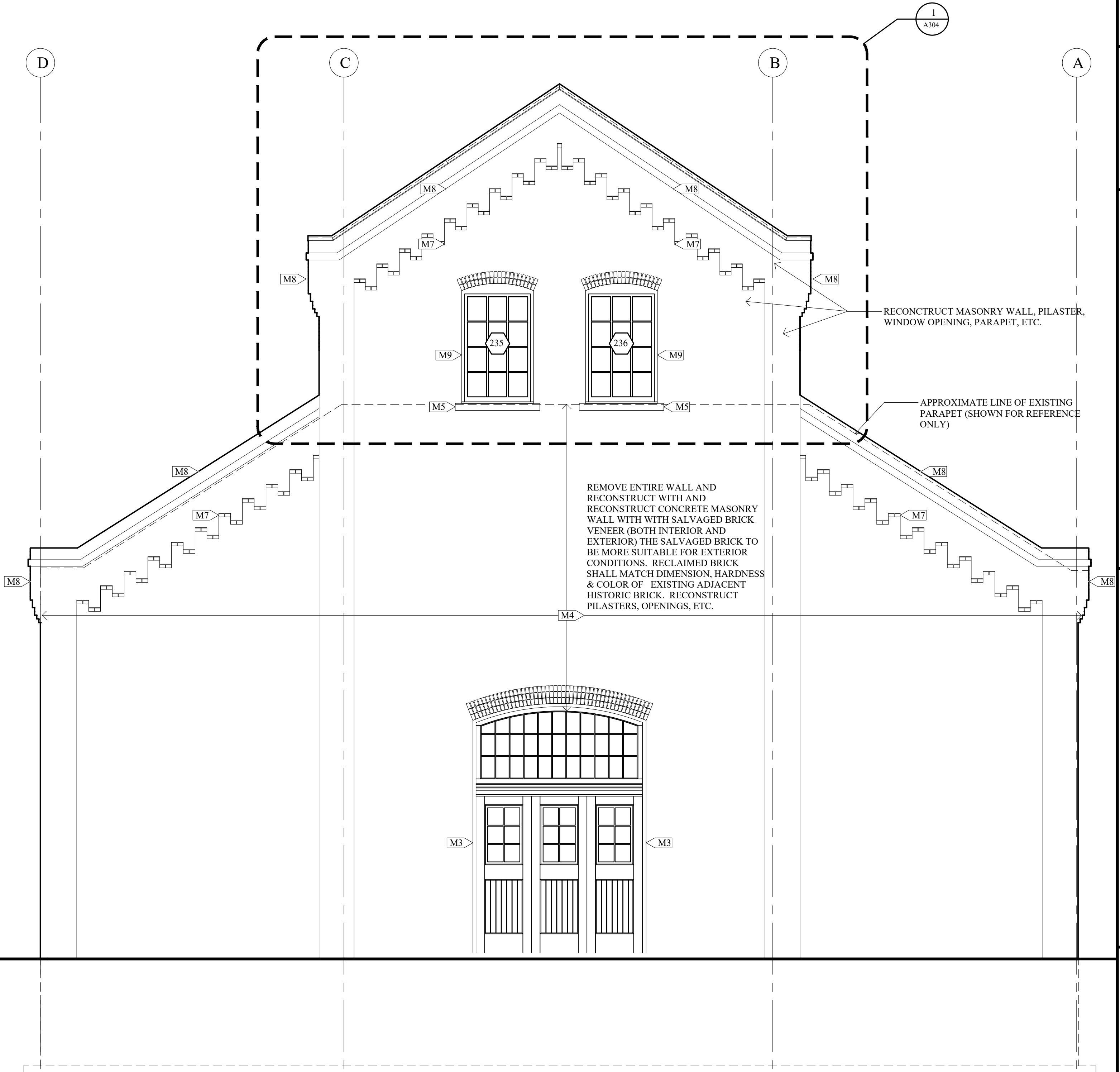
NEW CONSTRUCTION
ELEVATION KEYNOTES

- 1** > NEW PRE-FINISHED METAL PARAPET CAP



MASONRY REHABILITATION + NEW CONSTRUCTION
NORTH BUILDING ELEVATION

1
A301 SCALE: 1/4" = 1'-0"



MASONRY REHABILITATION + NEW CONSTRUCTION
SOUTH BUILDING ELEVATION

2
A301 SCALE: 1/4" = 1'-0"



**JEFFREY
MORTON
ASSOCIATES**
206 Bluff Street
Dubuque, IA 52001
563.585.0043
ARCHITECTURE
INTERIOR DESIGN
STRUCTURAL ENGINEERING



QR
URBAN restoration
800 JACKSON STREET, LL2
DUBUQUE, IA, 52001

DEVELOPER

CONSTRUCTION MANAGER

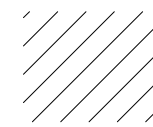
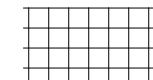
**ROUSE AND DEAN FOUNDRY
REHABILITATION PROJECT**
10TH & WASHINGTON STREETS
DUBUQUE, IOWA

**REHABILITATION
NORTH BLDG. ELEVATION
SOUTH BLDG. ELEVATION**

PROJECT NO. 1703.0
DATE: 15 DEC 2021
DRAWN BY: MS
REVISIONS

SHEET NO.
A301

MASONRY REHABILITATION AND RECONSTRUCTION ELEVATION
GRAPHICS LEGEND

-  REMOVE EXTERIOR WYTHE OF HARD BRICK OR DETERIORATED BRICK IN HATCHED AREA AND REPLACE WITH RECLAIMED BRICK TO MATCH EXISTING.
-  100% REPOINT MORTAR JOINTS IN HATCHED AREA

MASONRY REHABILITATION AND RECONSTRUCTION
ELEVATION GENERAL NOTES

1. NOTE

MASONRY REHABILITATION AND RECONSTRUCTION
ELEVATION KEY NOTES

- M1** > REMOVE CRACKED, BROKEN, OR FAILING BRICK AND REPLACE WITH SALVAGED BRICK TO MATCH EXISTING HISTORIC BRICK. REPOINT AREA AS REQUIRED WITH MORTAR THAT EXACTLY MATCHES EXISTING HISTORIC
- M2** > REPOINT MORTAR JOINTS IN DESIGNATED AREA. NEW MORTAR SHALL EXACTLY MATCH EXISTING HISTORIC
- M3** > RECONSTRUCT MASONRY JAMBS AT NEW DOOR OR WINDOW OPENING WITH SALVAGED BRICK TO MATCH EXISTING HISTORIC BRICK. TOOTH IN NEW BRICKS, SEE ALSO DOOR AND WINDOW DETAILS IN A800 SHEET SERIES.
- M4** > COMPLETELY REMOVE EXTERIOR WYTHE OF BRICK AT WALL, PILASTER OR CORNER. KEEP ALL SALVAGEABLE BRICKS FOR FUTURE RE-USE. RECONSTRUCT AREA USING SALVAGED BRICKS TO MATCH EXISTING HISTORIC.
- M5** > INSTALL EXISTING OR REPLICATED CAST IRON STEEL SILL. SEE WINDOWS DETAILS ON A800 SERIES FOR PROFILE OF NEW SILL.
- M6** > REMOVE TAR REMNANTS ON BRICK USING THE GENTLEST MEANS POSSIBLE. COMPLETE REPLACEMENT OF BRICK SHALL BE ACCEPTABLE ONLY IF TAR REMAINS AFTER MULTIPLE ATTEMPTS OF REMOVAL.
- M7** > RECONSTRUCT BRICK DENTIL USING RECLAIMED BRICK TO MATCH EXISTING. THE NEW BRICK DENTIL COURSING SHALL MATCH EXISTING HISTORIC BRICK DENTILS PRESENT ON THE NORTH, EAST AND WEST ELEVATIONS.
- M8** > RECONSTRUCT BRICK PARAPET USING RECLAIMED BRICK TO MATCH EXISTING HISTORIC BRICK
- M9** > NEW MASONRY WINDOW OPENING (JAMBS, ROWLOCK ARCH, ETC.) IN SECTION OF NEW MASONRY WALL USING RECLAIMED BRICK TO MATCH EXISTING HISTORIC BRICK.
- M10** > COMPLETELY REMOVE EXTERIOR BRICK WALL, PILASTERS AND CORNERS. KEEP ALL SALVAGEABLE BRICKS FOR FUTURE RE-USE. RECONSTRUCT AREA USING MULTI-WYTHE MASONRY WALL USING REINFORCED CONCRETE MASONRY WITH CLAY MASONRY VENEER ON BOTH INTERIOR AND EXTERIOR

NEW CONSTRUCTION
ELEVATION KEYNOTES

- 1** > NEW PRE-FINISHED METAL PARAPET CAP



MASONRY REHABILITATION & NEW CONSTRUCTION
EAST BUILDING ELEVATION

1
A302 SCALE: 1/4" = 1'-0"



JEFFREY
MORTON
ASSOCIATES
206 Bluff Street
Dubuque IA 52001
563.585.0043
ARCHITECTURE
INTERIOR DESIGN
STRUCTURAL ENGINEERING



URBAN
RESTORATION
800 JACKSON STREET, LL2
DUBUQUE IA, 52001

ROUSE AND DEAN FOUNDRY
REHABILITATION PROJECT
10TH & WASHINGTON STREETS
DUBUQUE, IOWA

REHABILITATION
EAST BLDG. ELEVATION

PROJECT NO. 1703.0
DATE: 15 DEC 2021
DRAWN BY: MS
REVISIONS

SHEET NO.
A302

