

**FOR SALE**

**Insite**  
COMMERCIAL  
REAL ESTATE



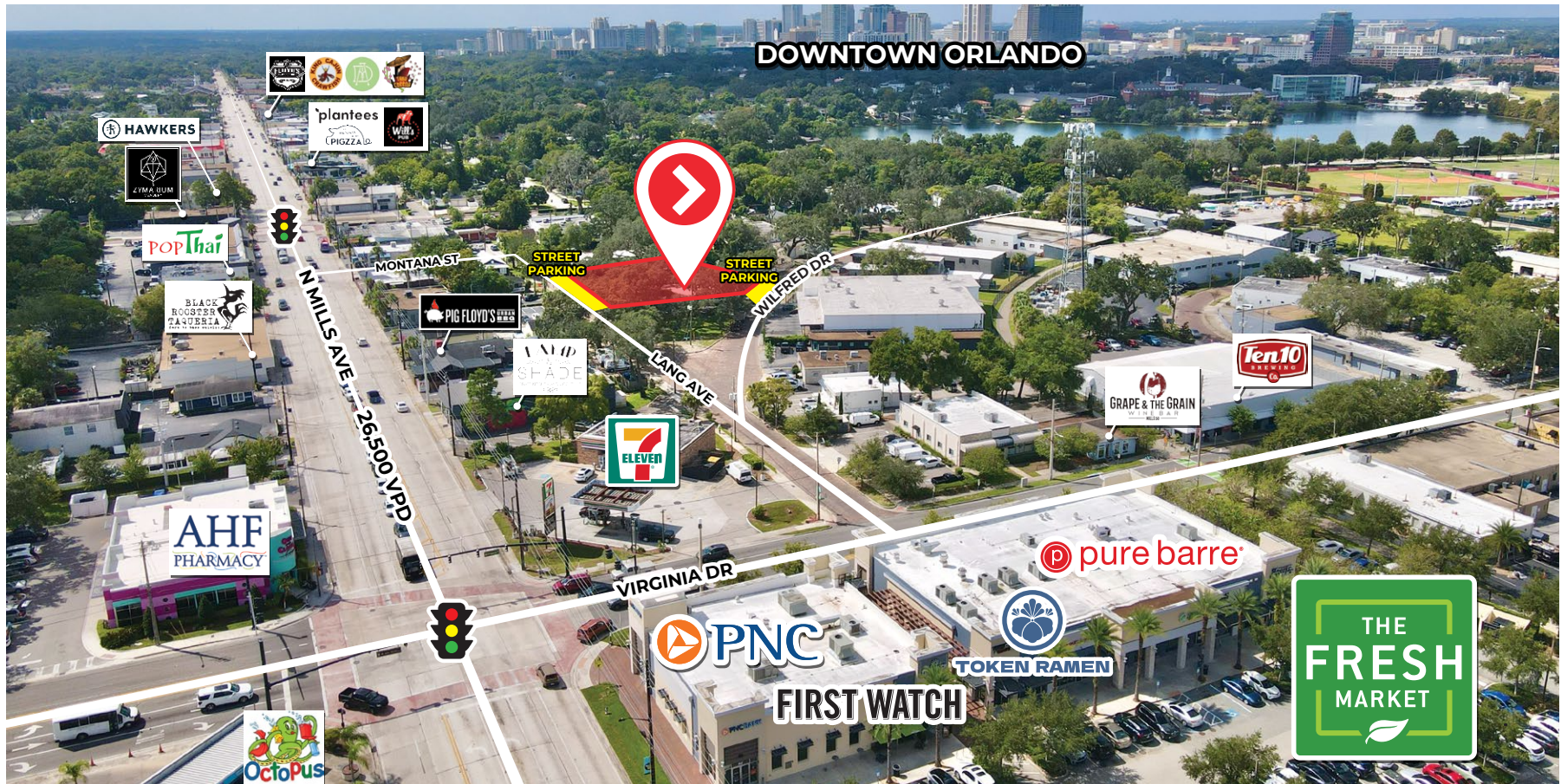
**OFFICE BUILDING | MILLS50 DISTRICT**

**1309 WILFRED DR, ORLANDO, FL 32803**

**PAYTON FOSTER**  
407-461-8080

**ALEX BISBEE**  
407-864-6444





## PROPERTY HIGHLIGHTS

- **744 sq ft office building on 0.15 acre lot.**
- In the heart of the Mills50 district with excellent access to downtown Orlando, major highways and an abundance of amenities and restaurants.
- Occupy immediately or ability to expand building / re-develop.
- Street parking available on both sides of the property in addition to parking spaces on site.

## 2024 DEMOGRAPHICS

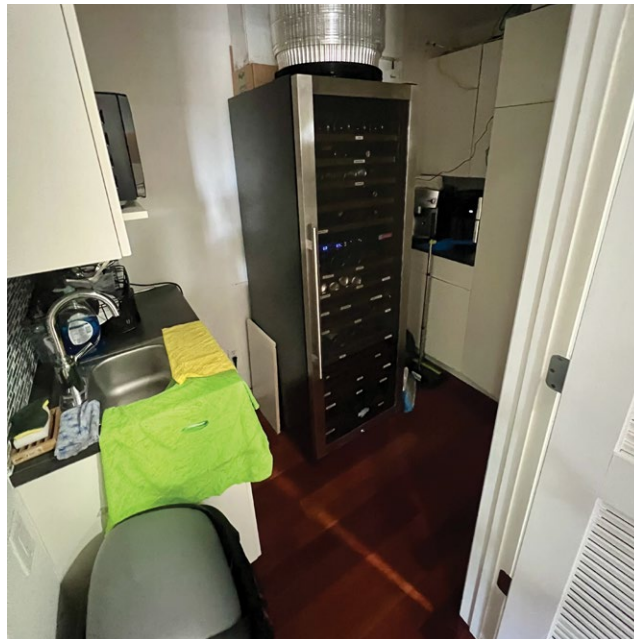
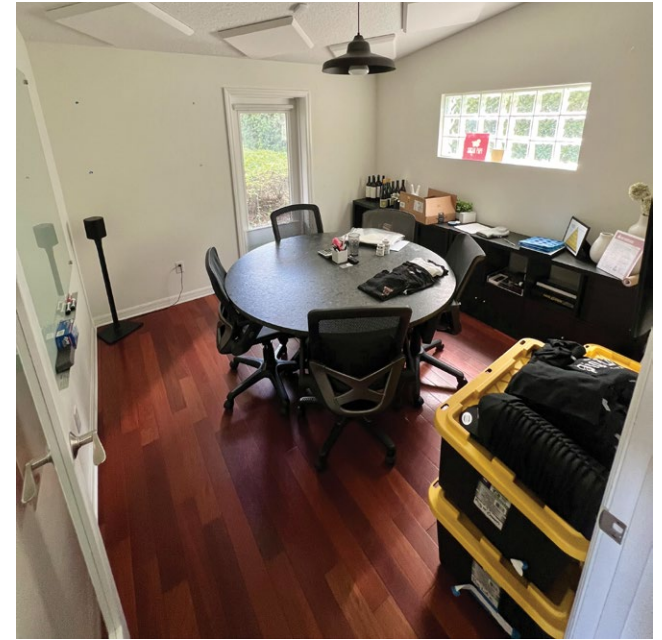
	Population	1 Mile	11,958		Employees	1 Mile	14,127
		3 Miles	58,668			3 Miles	74,621
		5 Miles	105,858			5 Miles	132,429
	Average Household Income	1 Mile	\$148,093		Households	1 Mile	6,655
		3 Miles	\$159,880			3 Miles	31,440
		5 Miles	\$157,324			5 Miles	53,252



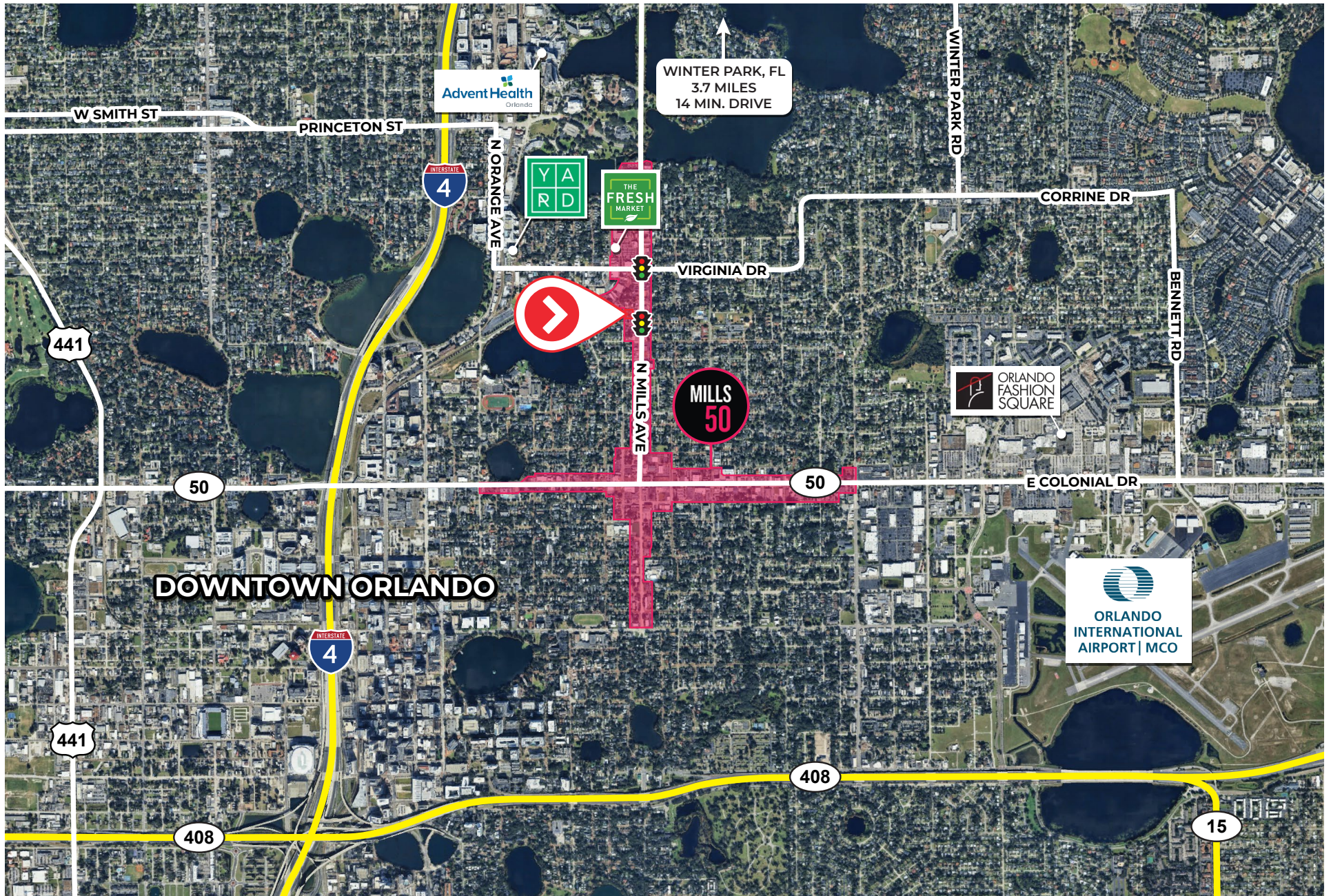




# INTERIOR PHOTOS

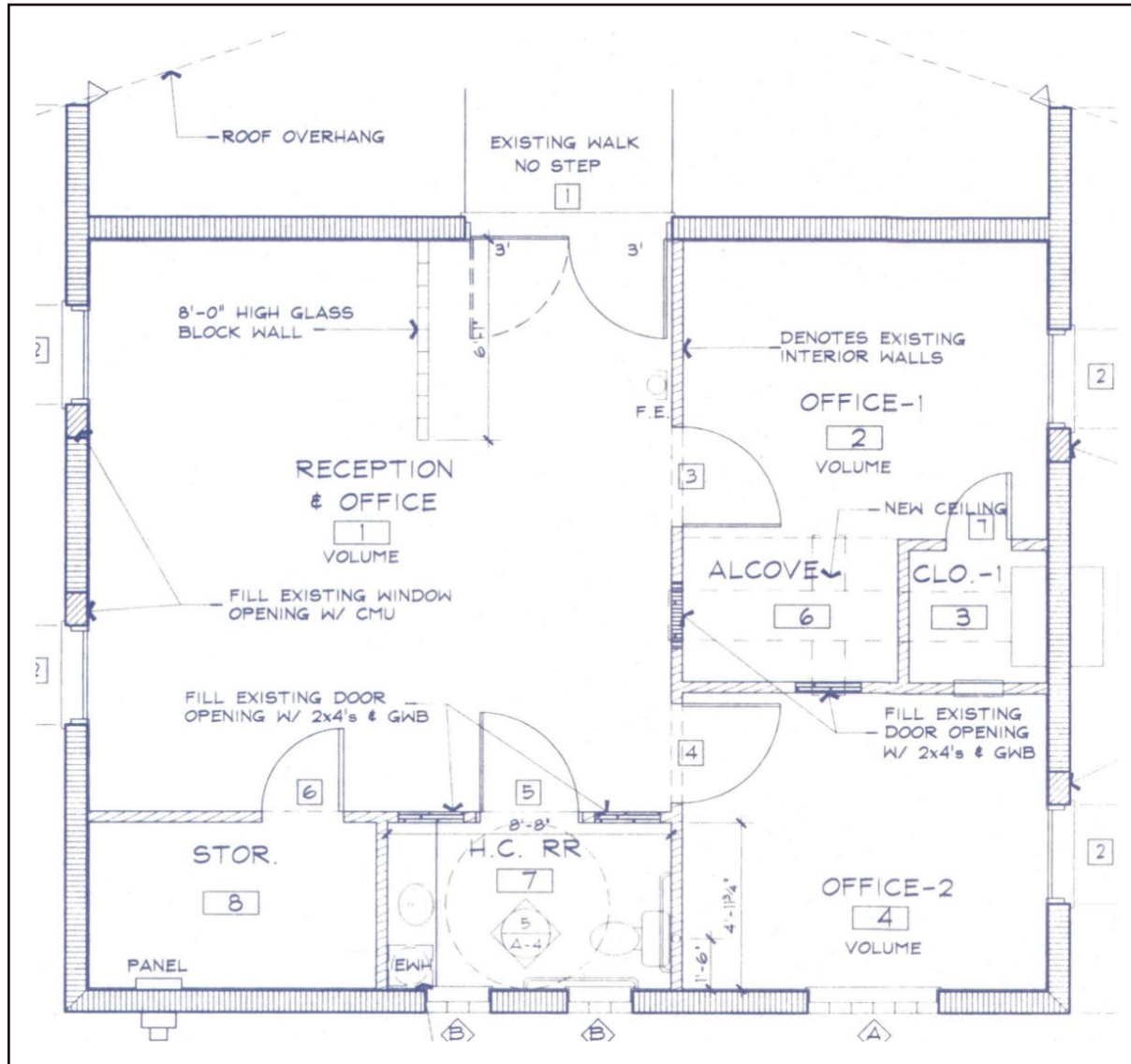


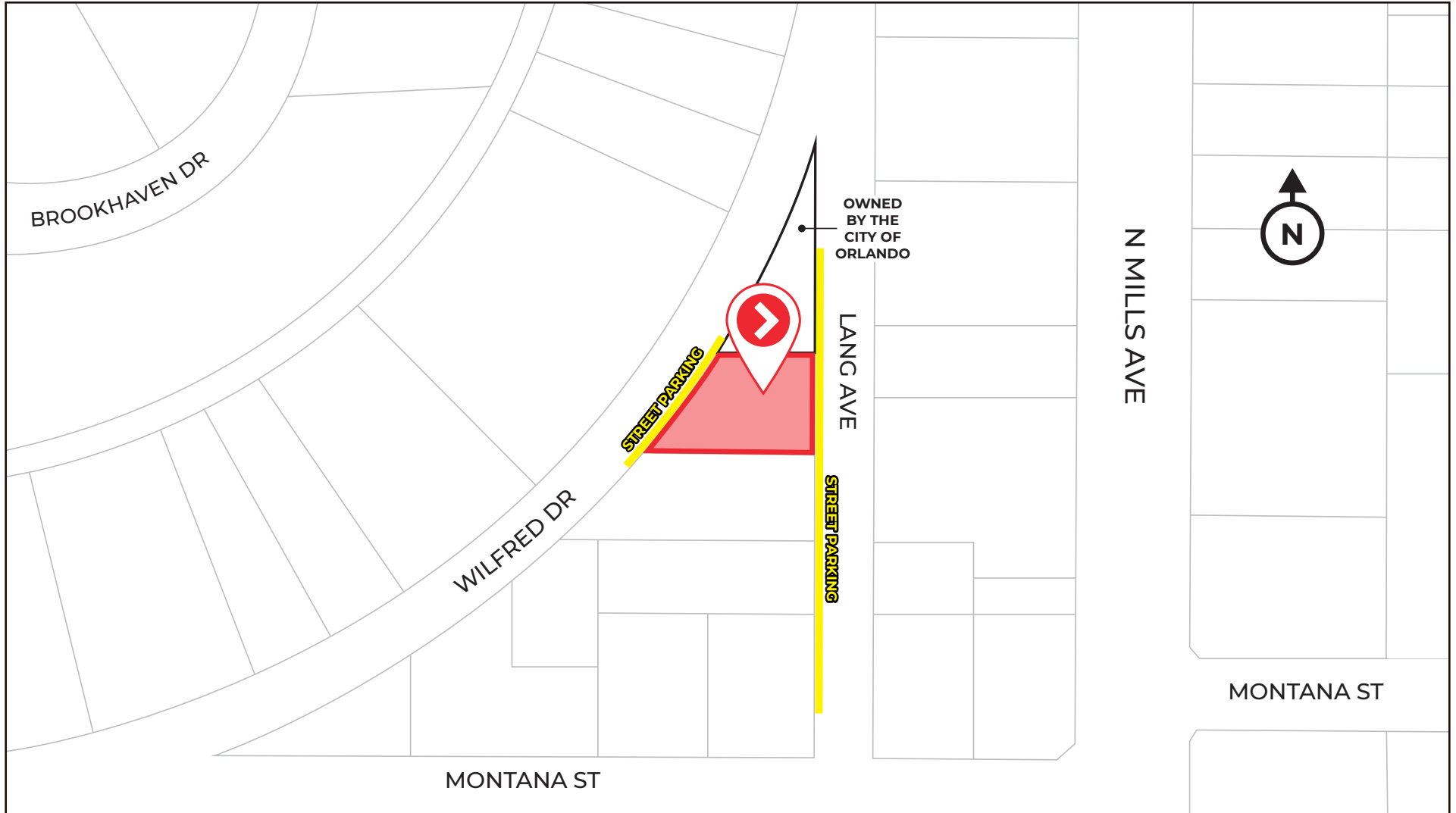






# FLOOR PLAN





FOR MORE  
INFORMATION  
PLEASE CONTACT

**PAYTON FOSTER**

407-461-8080

PFOSTER@INSITEREI.COM

**ALEX BISBEE**

407-864-6444

ABISBEE@INSITEREI.COM

