

CUBEWORK

FOR SALE/LEASE

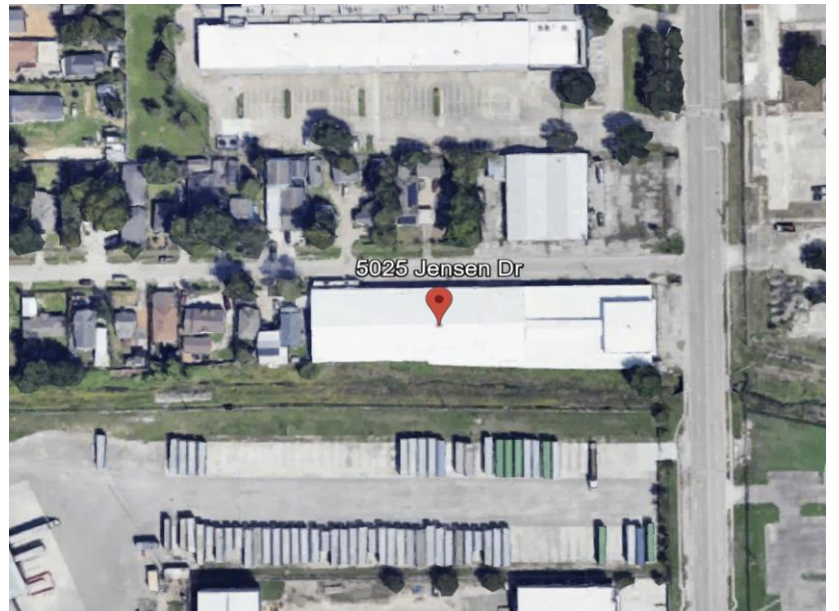
For Sale/Lease, is a strategically positioned warehouse on the corner of Jensen Drive and Ivy Street. Located inside the 610 loop, 3.4 miles from Downtown Houston. This warehouse has 3 truck entrances, two grade level and one double wide truck well. Brand new roof replaced in 2023.

Property Highlights:

- ✓ Lot Size: 1.27- acres
- ✓ RBA: 48,600 SF
- ✓ Loading Docks: 2 ext.
- ✓ Grade Level: 3 ext.
- ✓ Stories: 1
- ✓ Clear: 14'0 – 18'0
- ✓ Construction: Masonry
- ✓ New Roof replaced in 2023
- ✓ Built: 1951
- ✓ Class: C
- ✓ Land: 55,321 SF

FOR LEASING/SALE INFORMATION, PLEASE CONTACT:

Christine Wei
(800) 338-6369
Info@Cubework.com
www.cubework.com
Christine.Wei@Cubework.com



5025 JENSEN DRIVE, HOUSTON TX 77026