

DRIVE THROUGH ON PHILIPS/JTB

FOR LEASE

5081 J TURNER BUTLER BLVD, JACKSONVILLE, FL 32216




LOCATION DESCRIPTION

Positioned at the highly trafficked Philips Hwy and J Turner Butler Blvd intersection in the Southpoint area

PROPERTY HIGHLIGHTS

- 3,843 SF second generation restaurant with drive through
- Very close proximity to major I-95 and J Turner Butler Interchange
- Direct access from J Turner Butler Blvd and easy cross access to Philips Hwy
- Excellent visibility and dedicated pylon signage
- Surrounded by very strong daytime population
- Less than 4 miles from the St Johns Town Center - North Florida's super regional shopping destination



 DEMOGRAPHICS	1 MILE	3 MILES	5 MILES
2024 Total Population	6,739	81,970	198,822
2024 Daytime Population	26,649	122,207	269,014
2024 Total Households	3,048	35,595	87,667
2024 Avg Household Income	\$83,543	\$92,816	\$97,830

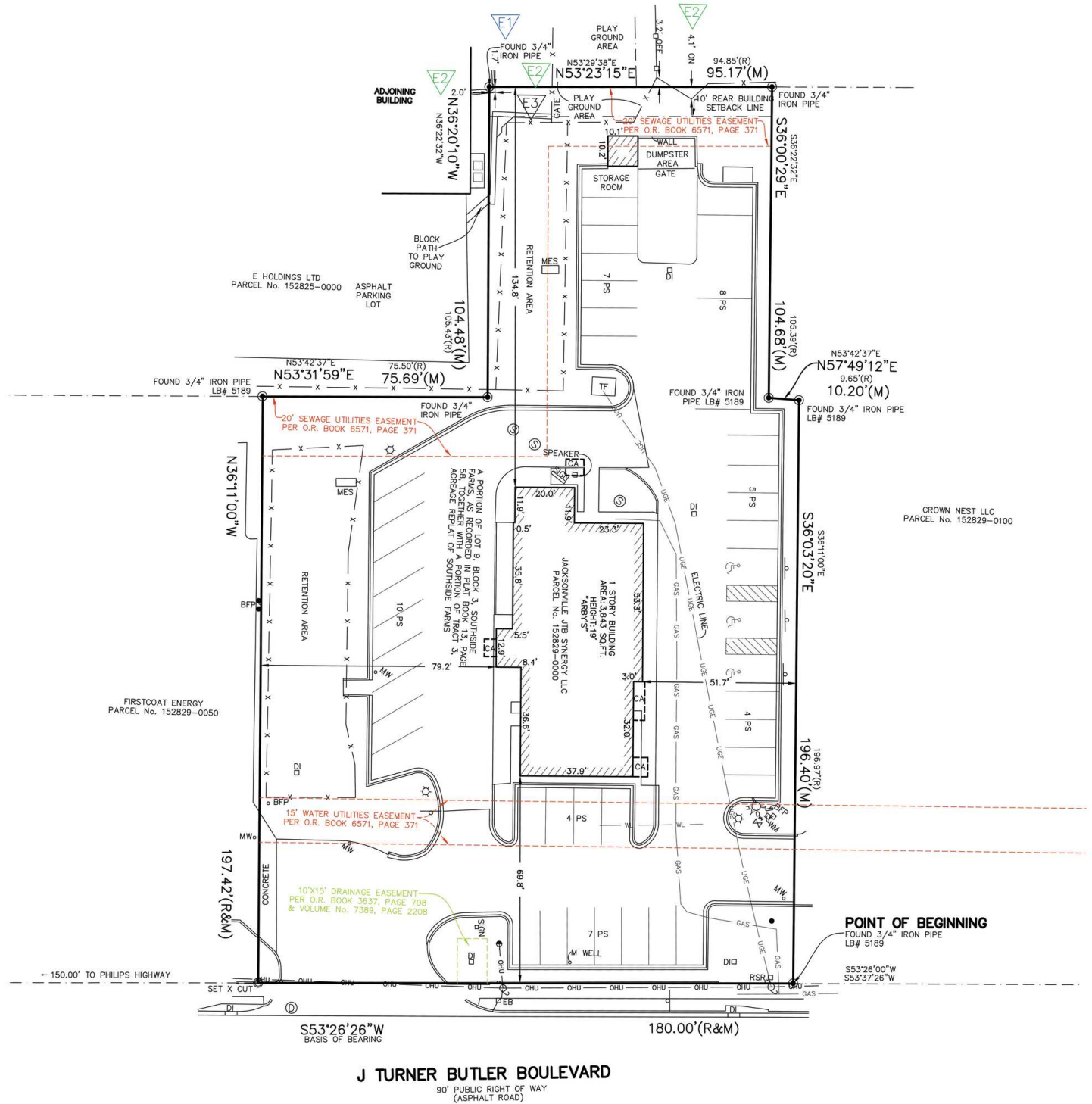


KELLY PULIGNANO
kelly.pulignano@tscg.com
904.565.2635

DRIVE THROUGH ON PHILIPS/JTB

5081 J TURNER BUTLER BLVD, JACKSONVILLE, FL 32216

FOR LEASE

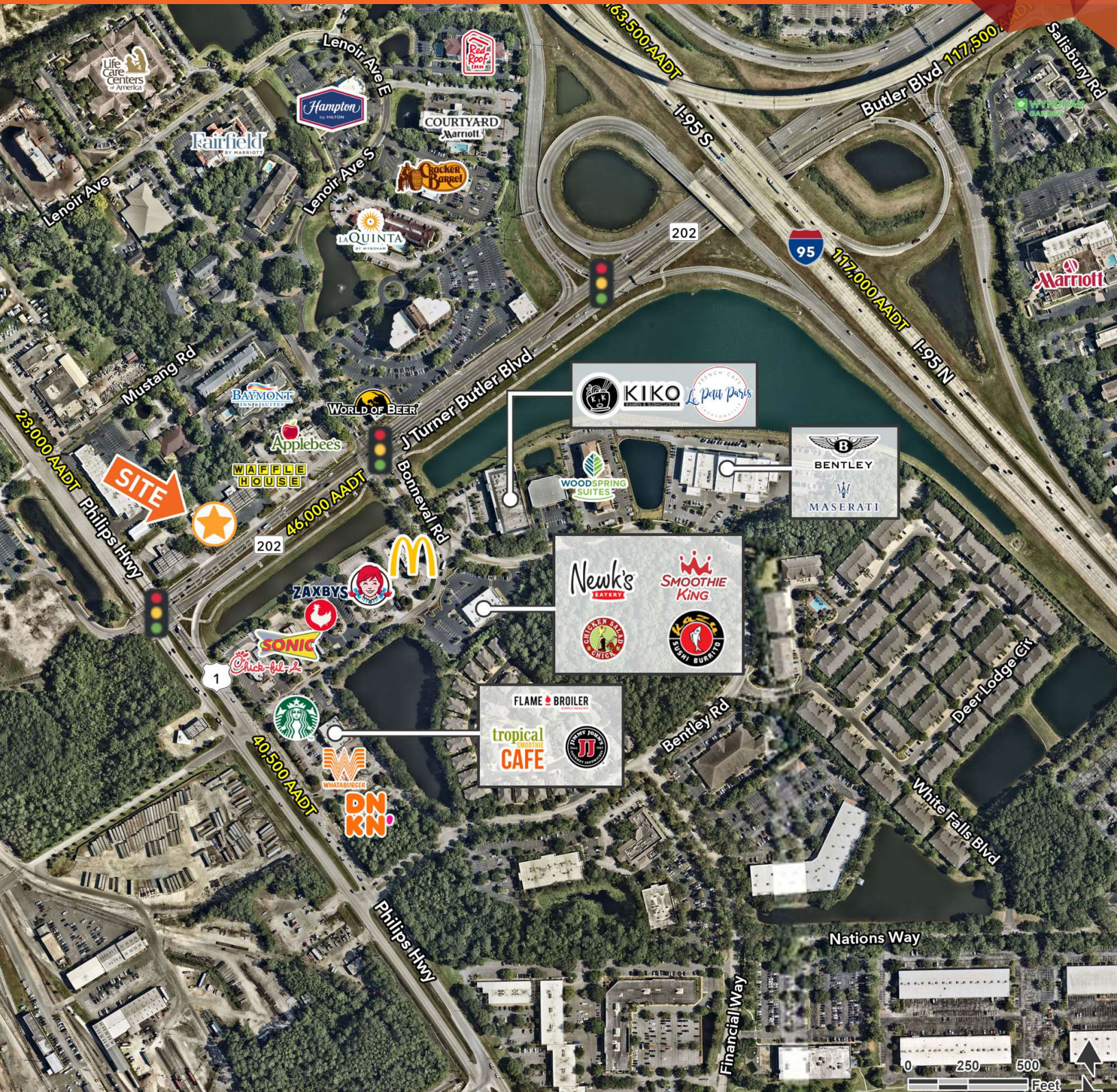


KELLY PULIGNANO
kelly.pulignano@tscg.com
904.565.2635

DRIVE THROUGH ON PHILIPS/JTB

FOR LEASE

5081 J TURNER BUTLER BLVD, JACKSONVILLE, FL 32216



KELLY PULIGNANO
kelly.pulignano@tscg.com
904.565.2635

DRIVE THROUGH ON PHILIPS/JTB

5081 J TURNER BUTLER BLVD, JACKSONVILLE, FL 32216

FOR LEASE



KELLY PULIGNANO
kelly.pulignano@tscg.com
904.565.2635