

# Riverport - Event and Office Space for Lease

## Multi-purpose property

- **75,000 square foot multi-purpose building**
- **Adjacent parking garage with 1,300 spaces**



6711 NE Birmingham Road, Kansas City, MO

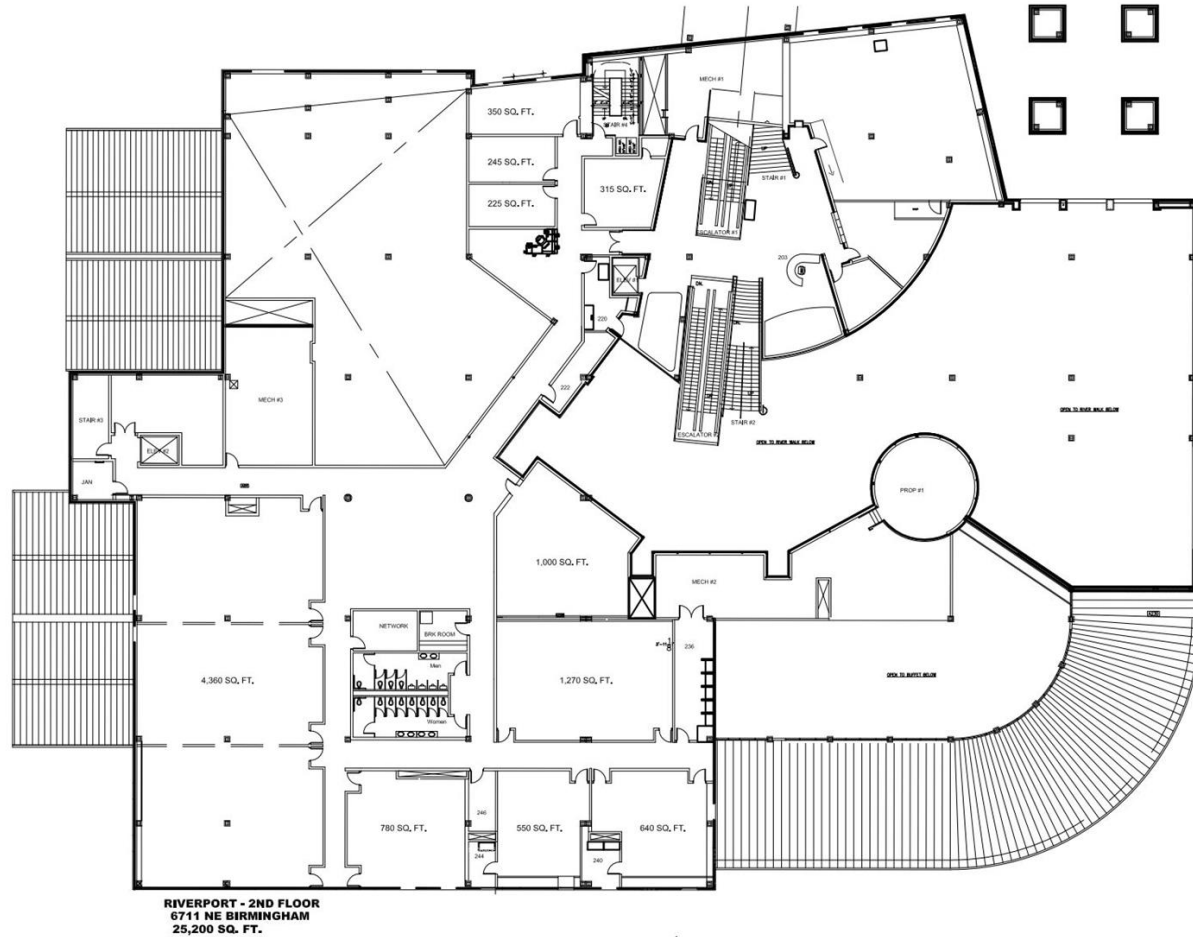
**Dan Horn**

(816) 979-1829

[danhorn@blueridgetower.net](mailto:danhorn@blueridgetower.net)

**PROPERTY  
CAPITAL  
ADVISORS**

**RIVERPORT - 1ST FLOOR**

$\wedge$ 

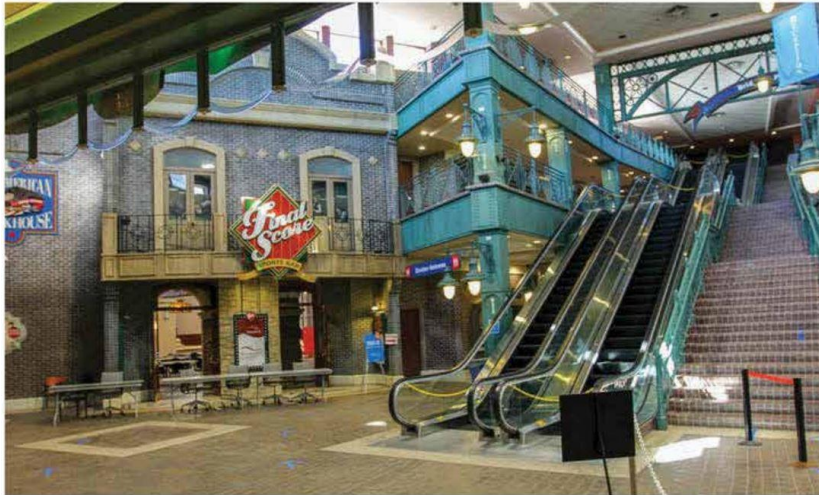


# Aerial View



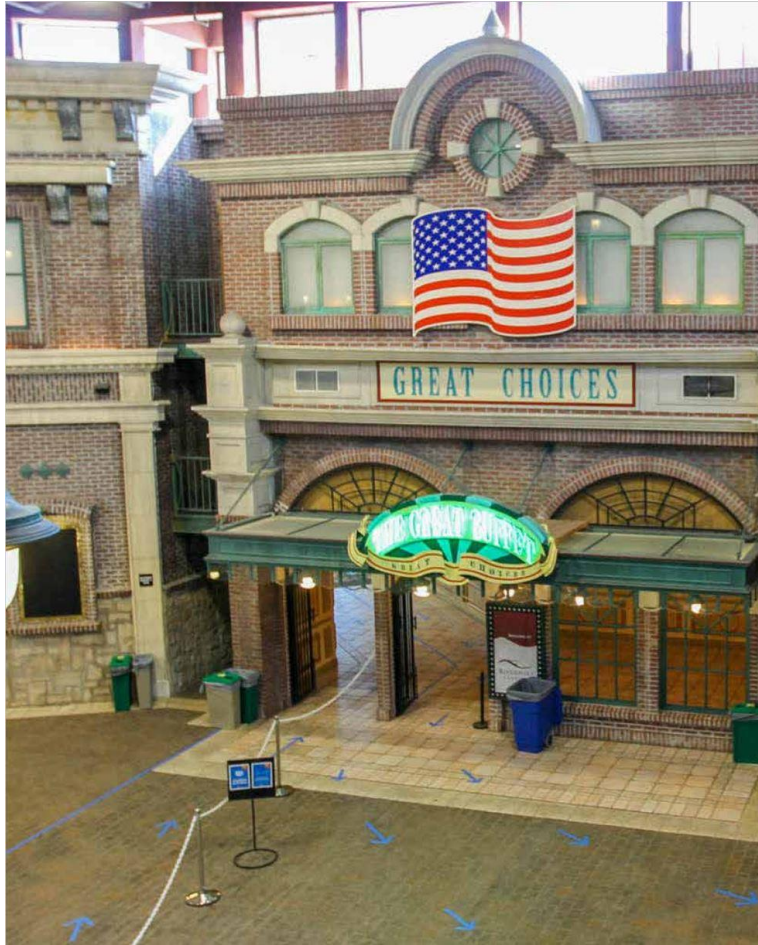


# Interior Photos

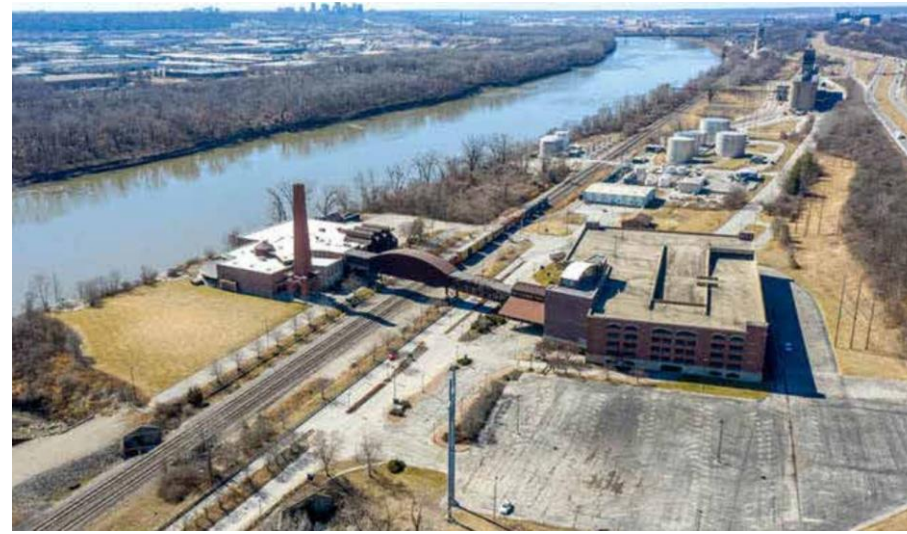




# Interior Photos



# Exterior Photos





# Exterior Photos

