



2500 W. 49th Street

Sioux Falls, SD 57105

PROPERTY HIGHLIGHTS

- Upper level private office suite in multi-tenant office building
- Professional tenant mix
- Monument signage available

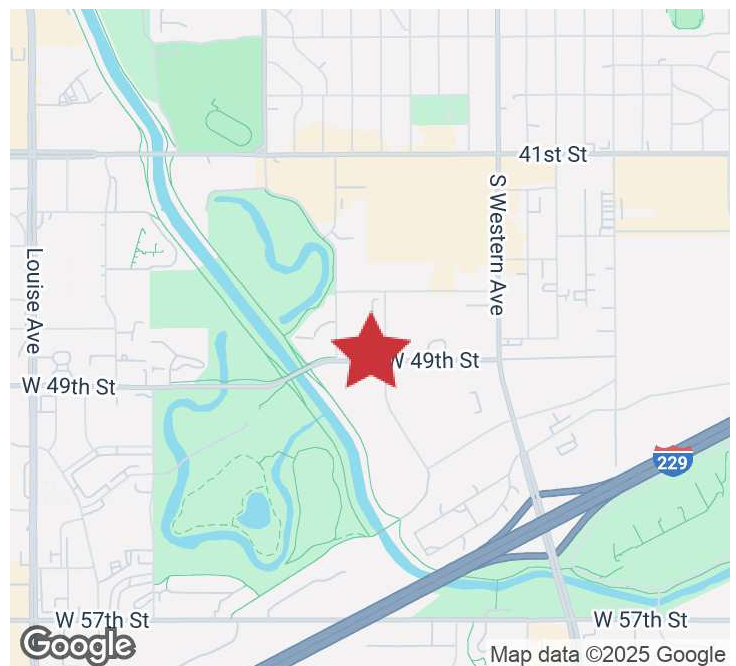
LOCATION DESCRIPTION

Located on the corner of W. 49th Street & S. Elmwood Avenue between Western & Kiwanis

Within blocks of 41st Street retail corridor

Area neighbors include The Western Mall, Runnings, Voyage, Helpline Center, Active Generations

Suite 206 Size	150 SF
Suite 206 Rate	\$275/MO GROSS
Suite 207 Size	143 SF
Suite 207 Rate	\$275/MO GROSS

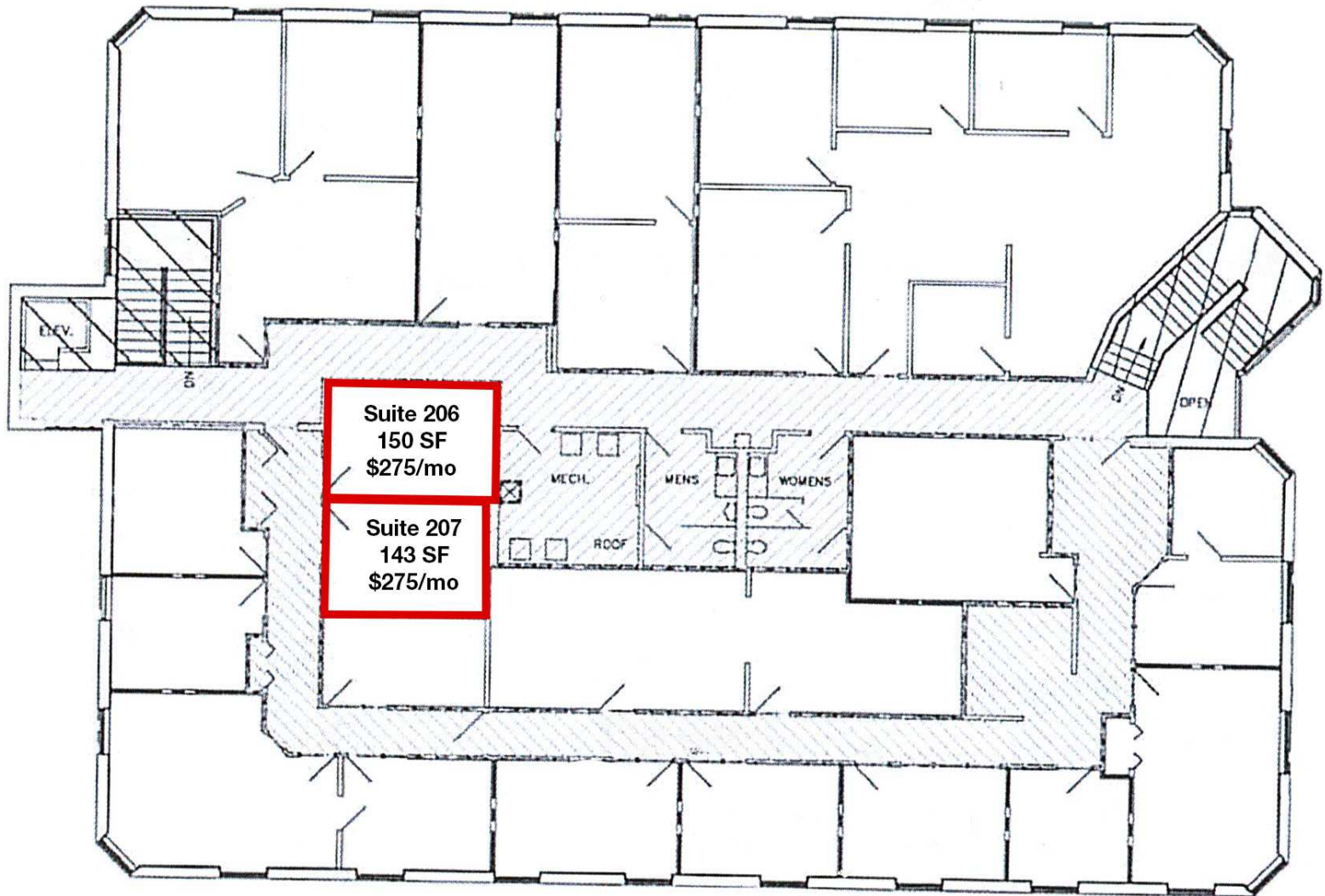


FLOOR PLAN

2500 W. 49TH STREET
Sioux Falls, SD 57105

FOR LEASE

Office Suite



AERIAL

2500 W. 49TH STREET
Sioux Falls, SD 57105

FOR LEASE

Office Suite



Map data ©2025 Google Imagery ©2025 Airbus, Maxar Technologies, USDA/FPAC/GEO

NA Sioux Falls

2500 W. 49th St. Suite 100
Sioux Falls, SD 57105
605.357.7100
naisiouxfalls.com